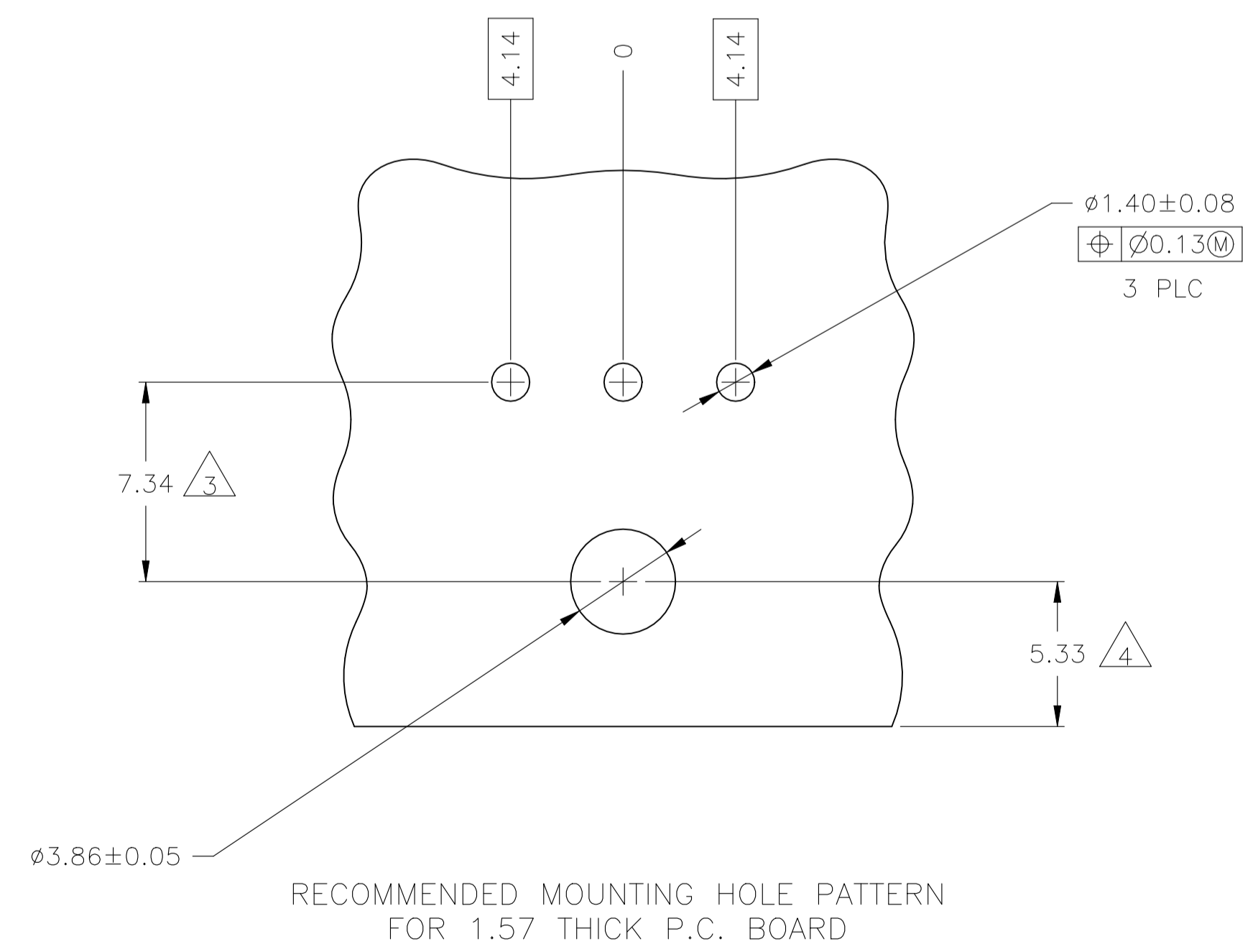
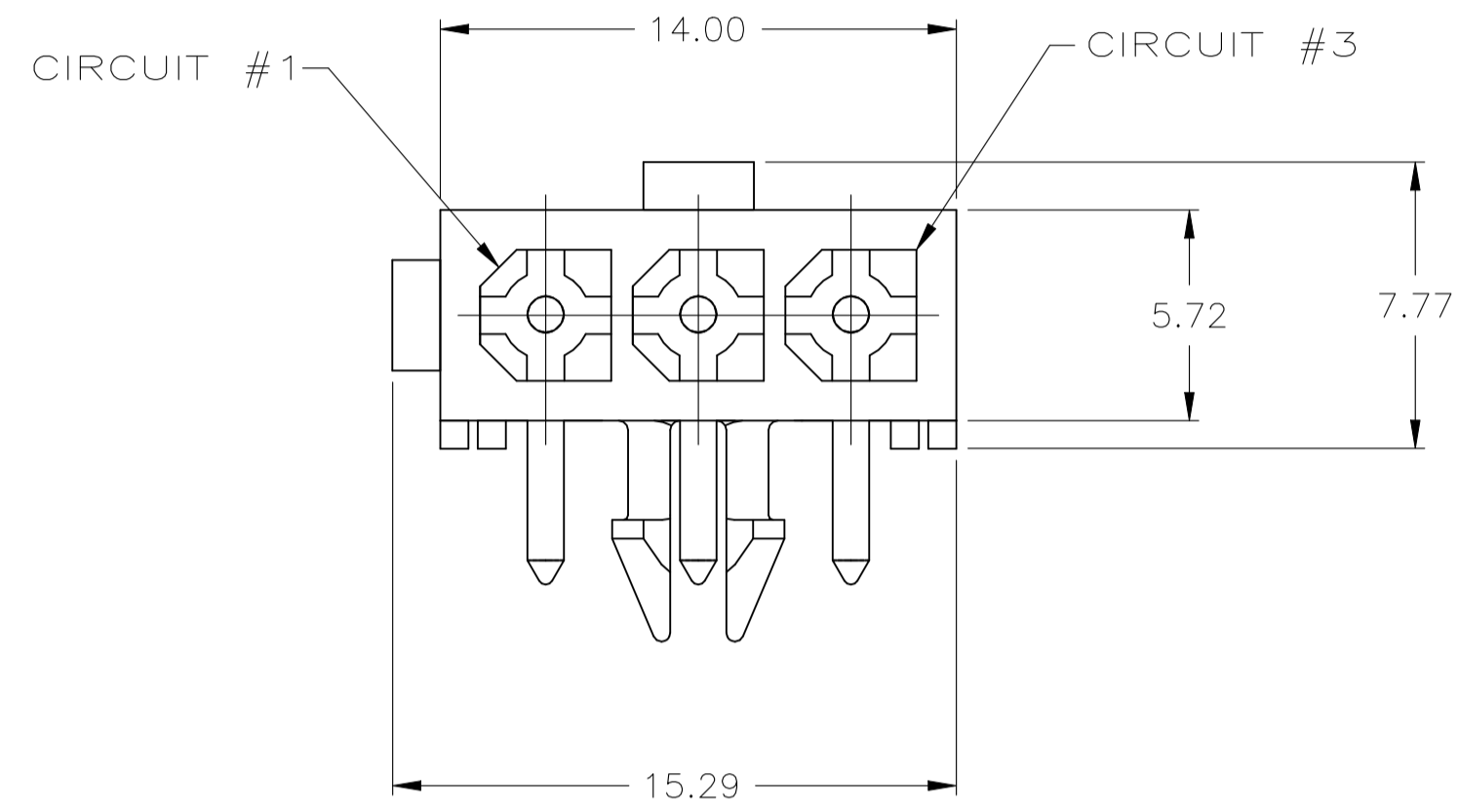
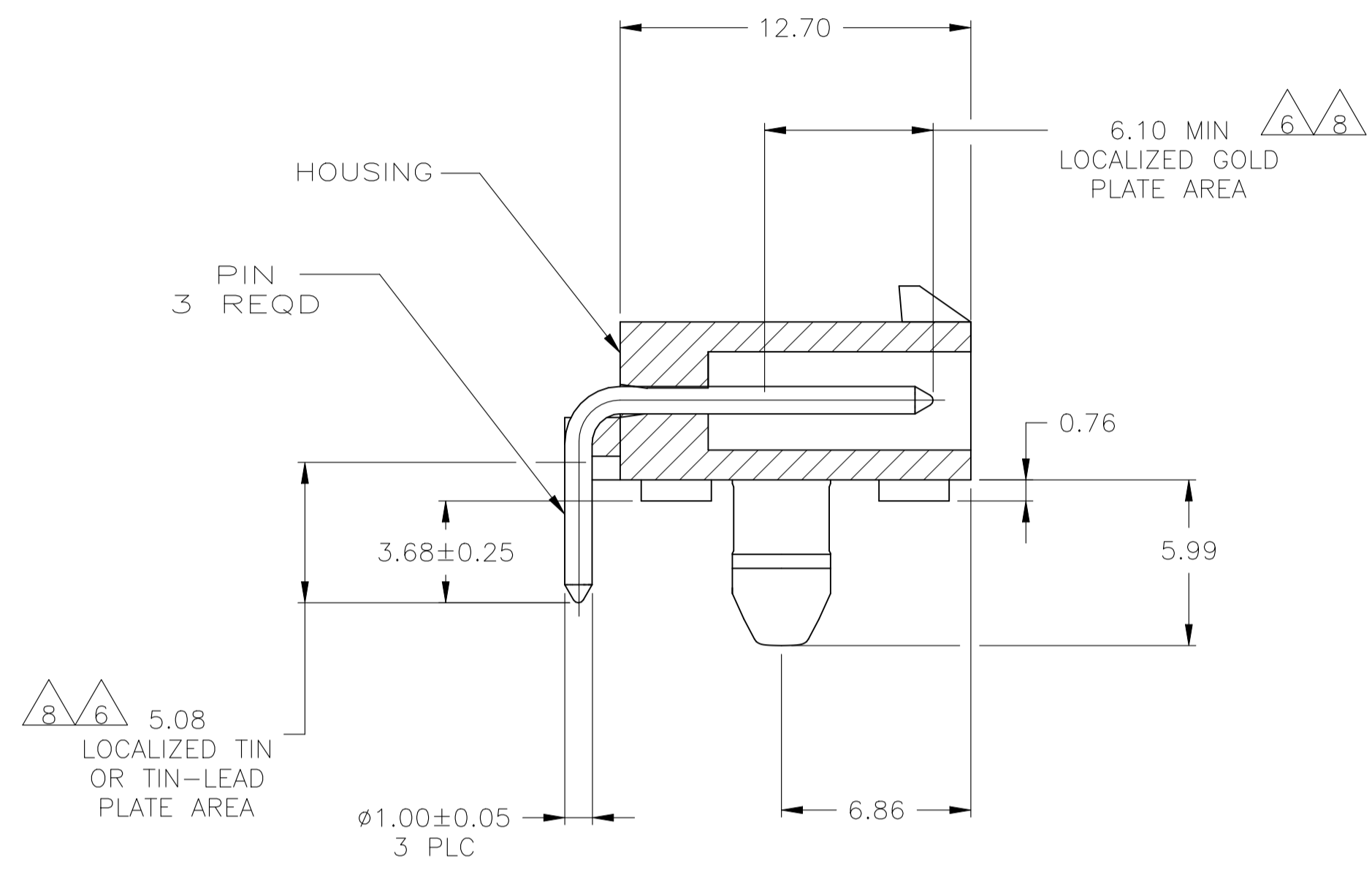


REVISIONS					
REV	DATE	DESCRIPTION	BY	CHKD	APP'D
G2	18JUL2024	REVISED PER ECR-24-196907	MV	JP	

- PINS TO COMPLY WITH AMP SOLDERABILITY SPEC 109-11-3.
- MATES WITH PLUG P/N 172166-1.
- COORDINATE DIMENSION APPLIES FROM CENTER OF ACTUAL FEATURE.
- RECOMMENDED FOR EDGE MOUNTING.
- 0.00381 MIN MATTE TIN LEAD OVER 0.00127 MIN NICKEL ENTIRE LENGTH OF PIN.
- 0.00076 MIN GOLD PLATE IN THE LOCALIZED PLATE AREA, 0.00381 MIN MATTE TIN LEAD IN THE LOCALIZED PLATE AREA, BOTH OVER 0.00127 MIN NICKEL.
- 0.00381 MIN MATTE TIN OVER 0.00127 MIN NICKEL ENTIRE LENGTH OF PIN.
- 0.00076 MIN GOLD PLATE IN THE LOCALIZED GOLD PLATE AREA, 0.00381 MIN MATTE TIN IN THE LOCALIZED TIN PLATE AREA, BOTH OVER 0.00127 MIN NICKEL.



MM	IN	MM	IN
1.57	.062	14.00	.551
1.40	.055	12.70	.500
1.00	.039	7.34	.289
0.76	.030	6.86	.270
0.25	.010	5.99	.236
0.13	.005	5.72	.225
0.08	.003	5.33	.210
0.05	.002	5.08	.200
0.00381	.000150	4.14	.163
0.00127	.000050	3.86	.152
0.00076	.000030	3.68	.145

CONVERSION TABLE

MATERIAL	PIN FINISH	HOUSING	COLOR	PART NO.
BRASS	△8	NYLON, UL94V-0	WHITE	1-770967-1
BRASS	△7	NYLON, UL94V-0	WHITE	1-770967-0
BRASS	△6	NYLON, UL94V-0	WHITE	-770967-2-
BRASS	△5	NYLON, UL94V-0	WHITE	-770967-1-

SUPERSEDE WITH 1-770967-1

OBSOLETE

THIS DRAWING IS A CONTROLLED DOCUMENT.

DIMENSIONS: mm	TOLERANCES UNLESS OTHERWISE SPECIFIED:	DRAWN: S. CARPENTER 24JUL03	DATE: 24JUL03
0 PLC ± -	1 PLC ± -	CHK: C. JONES 24JUL03	NAME: S. CARPENTER
2 PLC ± -	3 PLC ± 0.13	APP'D: C. JONES 24JUL03	PRODUCT SPEC: NAME
4 PLC ± -	ANGLES ± -	APPLICATION SPEC: NAME	SIZE: A1
WEIGHT: SEE TABLE	FINISH: SEE TABLE	WEIGHT: SEE TABLE	SCALE: 5:1

CUSTOMER DRAWING

TE Connectivity

HEADER ASSEMBLY, RIGHT ANGLE, WITH SHORT PEG, 3 CIRCUIT, MINI UNIVERSAL MATE-N-LOK(TM)

SIZE: A1 CAGE CODE: 00779 DRAWING NO: 770967 RESTRICTED TO: -

SHEET 1 OF 1 REV G2