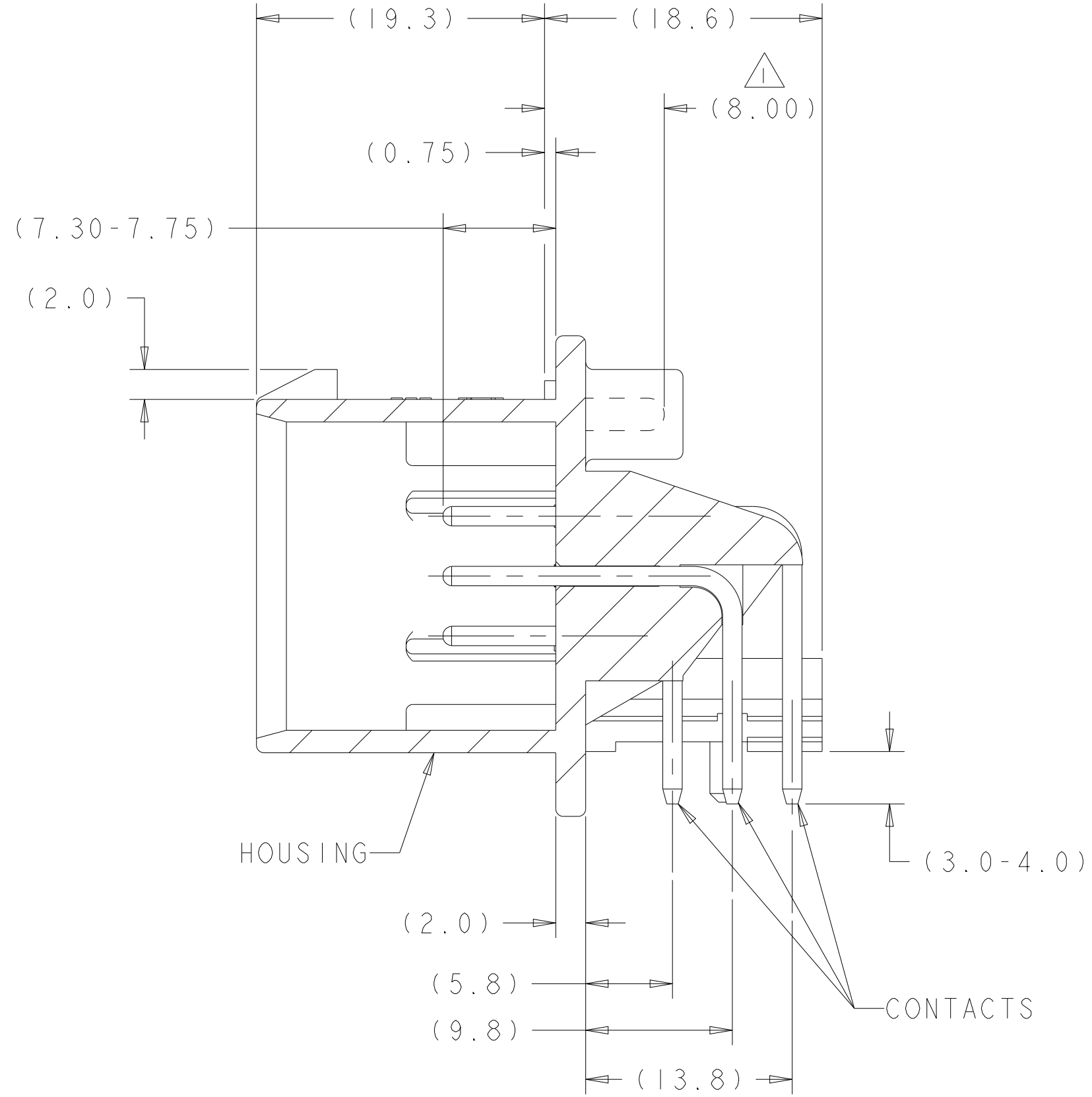
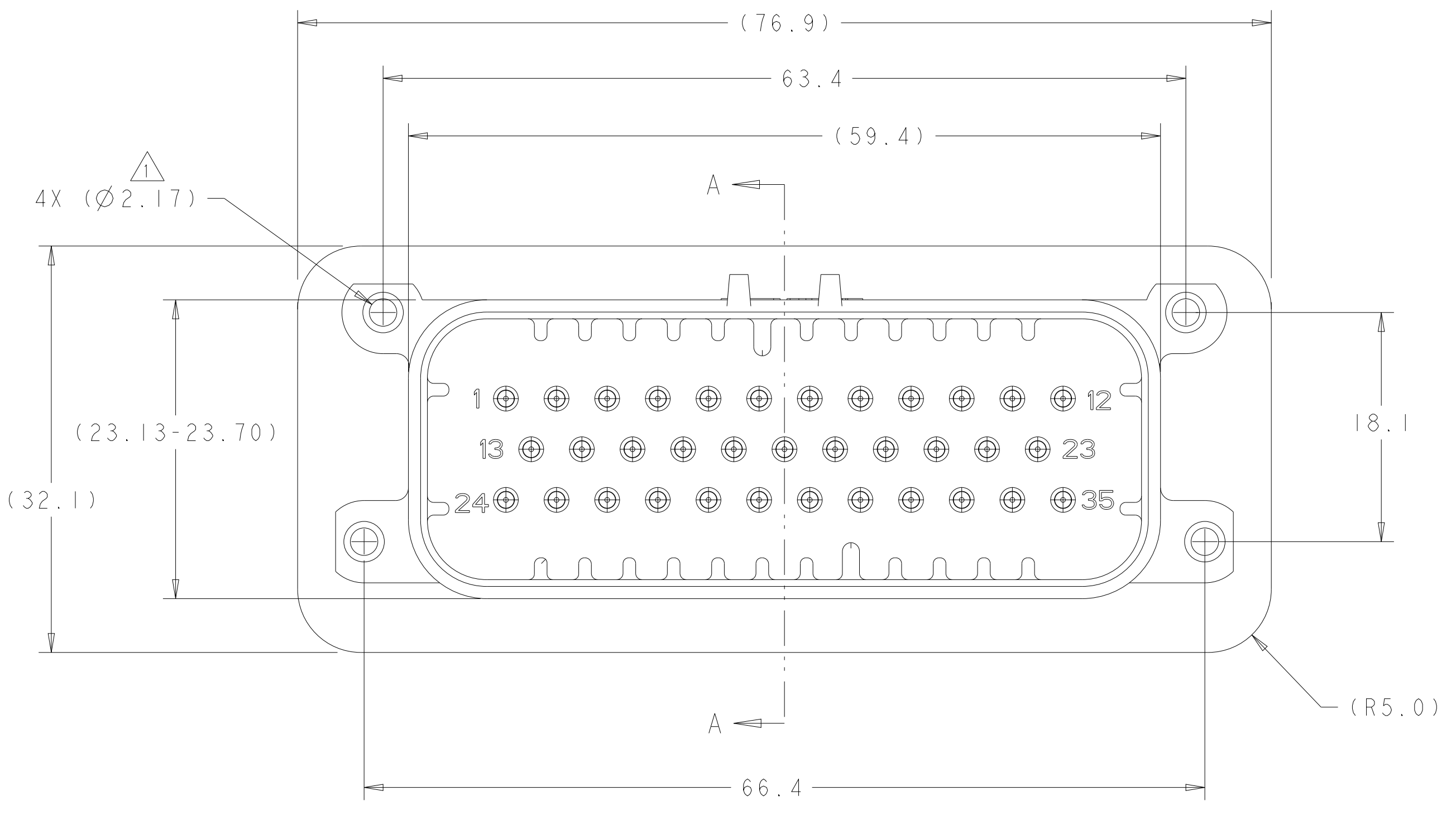
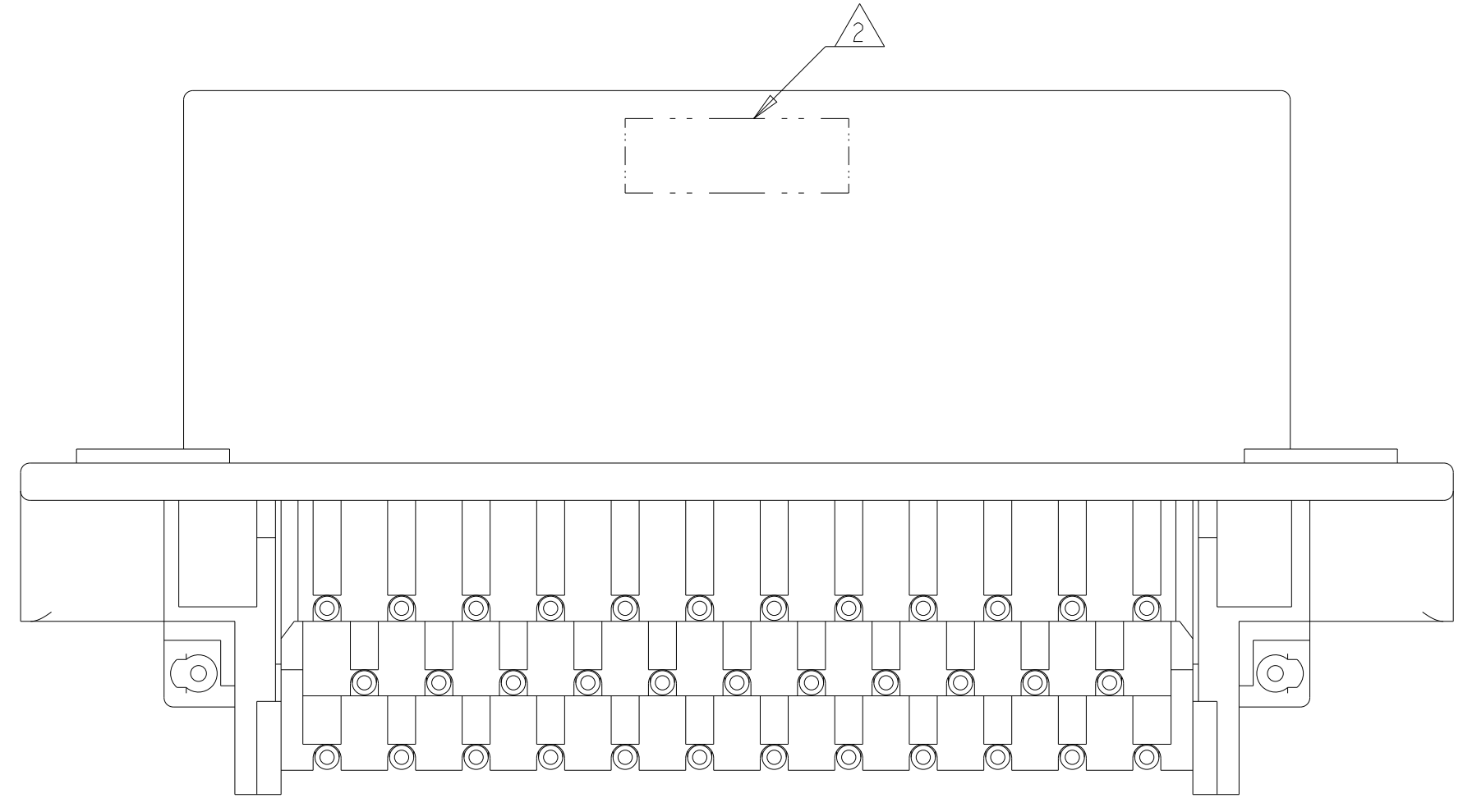


REVISIONS				
P	LTR	DESCRIPTION	DATE	APVD
H9		REV PER ECO-20-004256	25MAR2020	JM DS
H10		REVISED PER PCN E-20-016603	24NOV2020	PN DS
J		REVISED PER ECR-22-153179	18OCT2022	DK CB
J1		REVISED PER ECR-24-216938	16SEP2024	DK CB



SECTION A-A



△ SUGGESTED MOUNTING SCREW SIZE IS Ø2.50mm [APPROX. 0.099 INCH] SELF TAPPING THREAD FORMING SCREW, SUCH AS DELTA PT, TO BE DRIVEN AT 0.6-0.8 N-m. THE CUSTOMER MUST TEST THE SCREW SIZE AND TYPE IN ORDER TO VERIFY THEIR SELECTION BEFORE USE IN APPLICATION

TO VALIDATE HEADER MOUNTING PERFORMANCE, TE CONNECTIVITY WILL CONTINUE TO UTILIZE THE FOLLOWING TORQUE VALIDATION PROCESS ACCORDING TO APPLICATION SPEC 114-16016:
 MOUNTING PANEL THICKNESS - 4.75 +/- 0.15mm
 SCREW - 2.5X12mm DELTA PT

CUSTOMERS MAY VALIDATE OTHER SCREW SIZES AND TYPES AT THEIR OWN DISCRETION

△ DATE CODE IN THIS LOCATION USING 5 DIGIT CODE
 FIRST 2 DIGITS = YEAR, SECOND 2 DIGITS = WEEK
 LAST DIGIT = DAY

△ HOUSING COLORS ARE MECHANICALLY KEYS TO MATE ONLY WITH IDENTICALLY COLORED PLUG ASSEMBLIES.

△ MATERIAL: HEADER HOUSING - GLASS FILLED PBT
 PINS - TIN OR GOLD PLATED BRASS

5. HEADER MATES TO PLUG ASSEMBLY 776164 WHICH USES REELED TERMINAL 770520 OR LOOSE PIECE TERMINAL 770854

776180-1 & 1-776180-1
 KEY LOCATION AS SHOWN

GOLD	ORANGE	1-776180-6
GOLD	BLUE	1-776180-5
GOLD	GRAY	1-776180-4
GOLD	NATURAL (WHITE)	1-776180-2
GOLD	BLACK	1-776180-1
TIN	BLUE	776180-5
TIN	GRAY	776180-4
TIN	NATURAL (WHITE)	776180-2
TIN	BLACK	776180-1
FINISH	HEADER COLOR	PART NUMBER

THIS DRAWING IS A CONTROLLED DOCUMENT. DWN R. VESTAL 31DEC2002
 CHK D. CROWE 31DEC2002
 APVD D. CROWE 31DEC2002

DIMENSIONS: mm TOLERANCES UNLESS OTHERWISE SPECIFIED:
 0 PLC ±0.2
 1 PLC ±0.2
 2 PLC ±0.2
 3 PLC ±0.2
 4 PLC ±0.2
 ANGLES ±0.5
 FINISH ±0.1

MATERIAL: 4

THIS DRAWING IS A CONTROLLED DOCUMENT. DWN R. VESTAL 31DEC2002
 CHK D. CROWE 31DEC2002
 APVD D. CROWE 31DEC2002

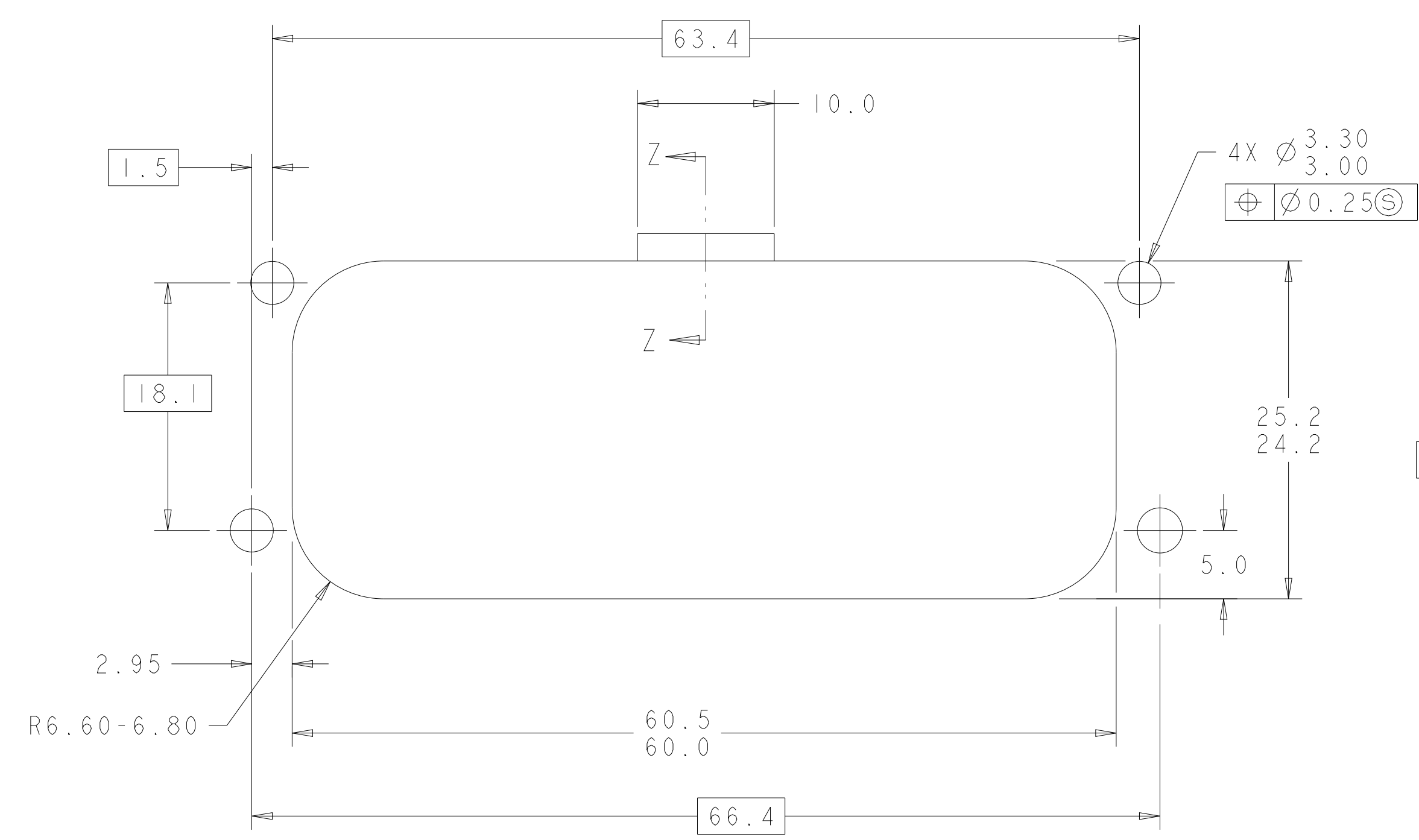
PRODUCT SPEC 108-1329
 APPLICATION SPEC 114-16016
 WEIGHT 40.45g

CUSTOMER DRAWING

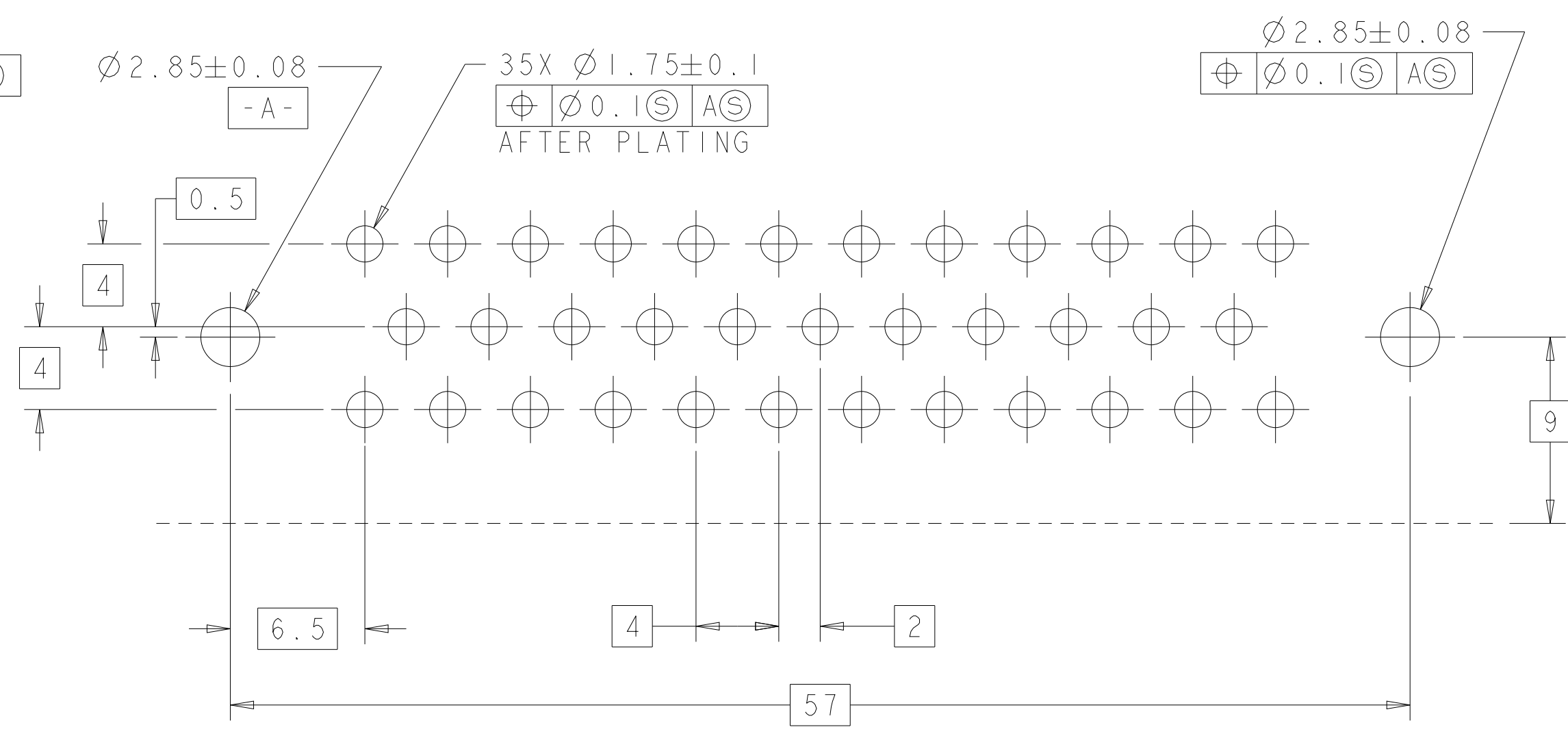
NAME: HEADER ASSEMBLY, 35 POSITION, RIGHT ANGLE, AMPSEAL
 SIZE: 100779
 CAGE CODE: 776180
 DRAWING NO: 776180
 RESTRICTED TO: -

SCALE: 4:1 SHEET 1 OF 2 REV J1

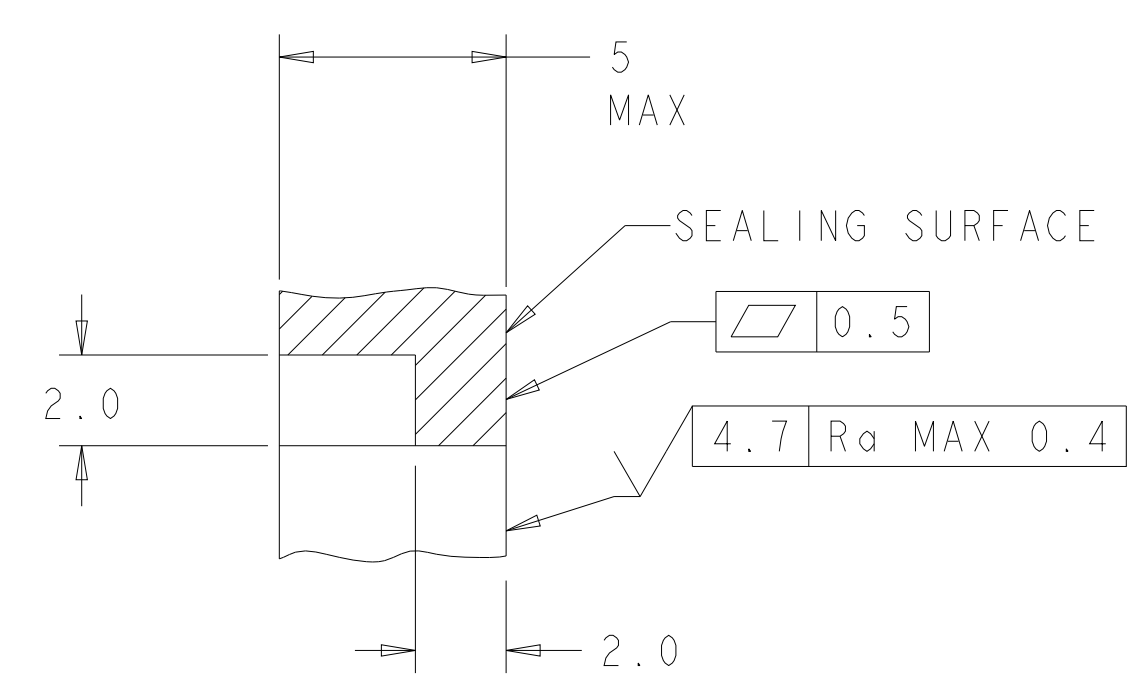
REVISIONS				
P.	LTH	DESCRIPTION	DATE	APVD
-	-	SEE SHEET 1	-	-



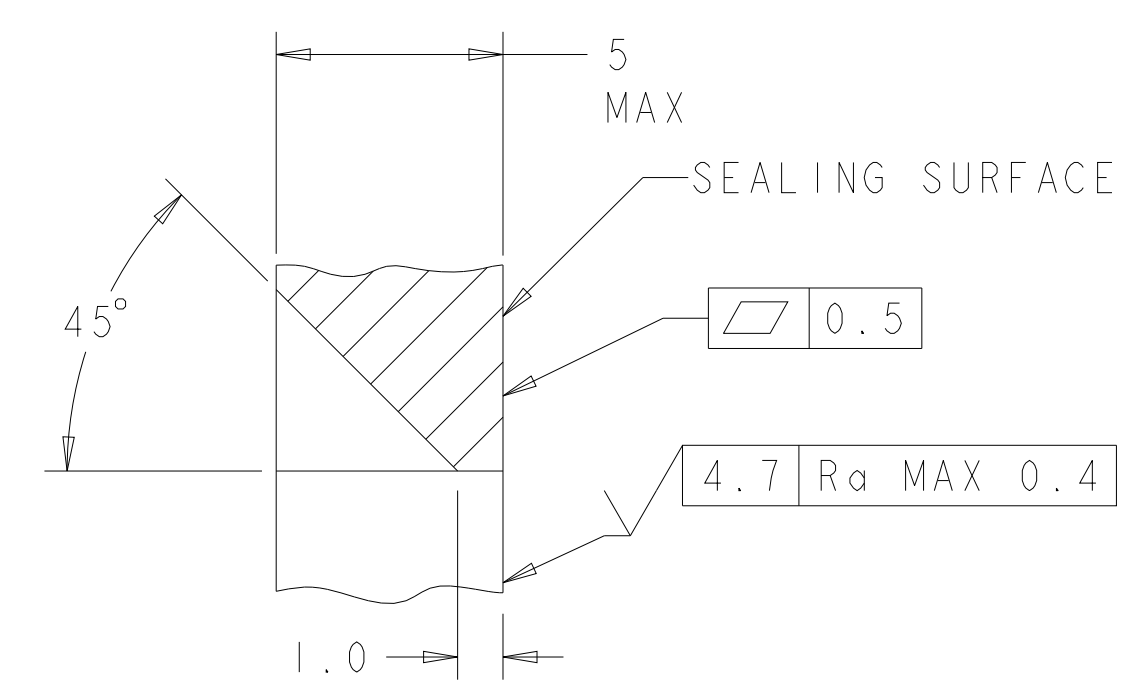
RECOMMENDED MOUNTING HOLE LAYOUT
 FOR 5.0 MAX THICK PANEL
 SCALE 3:1



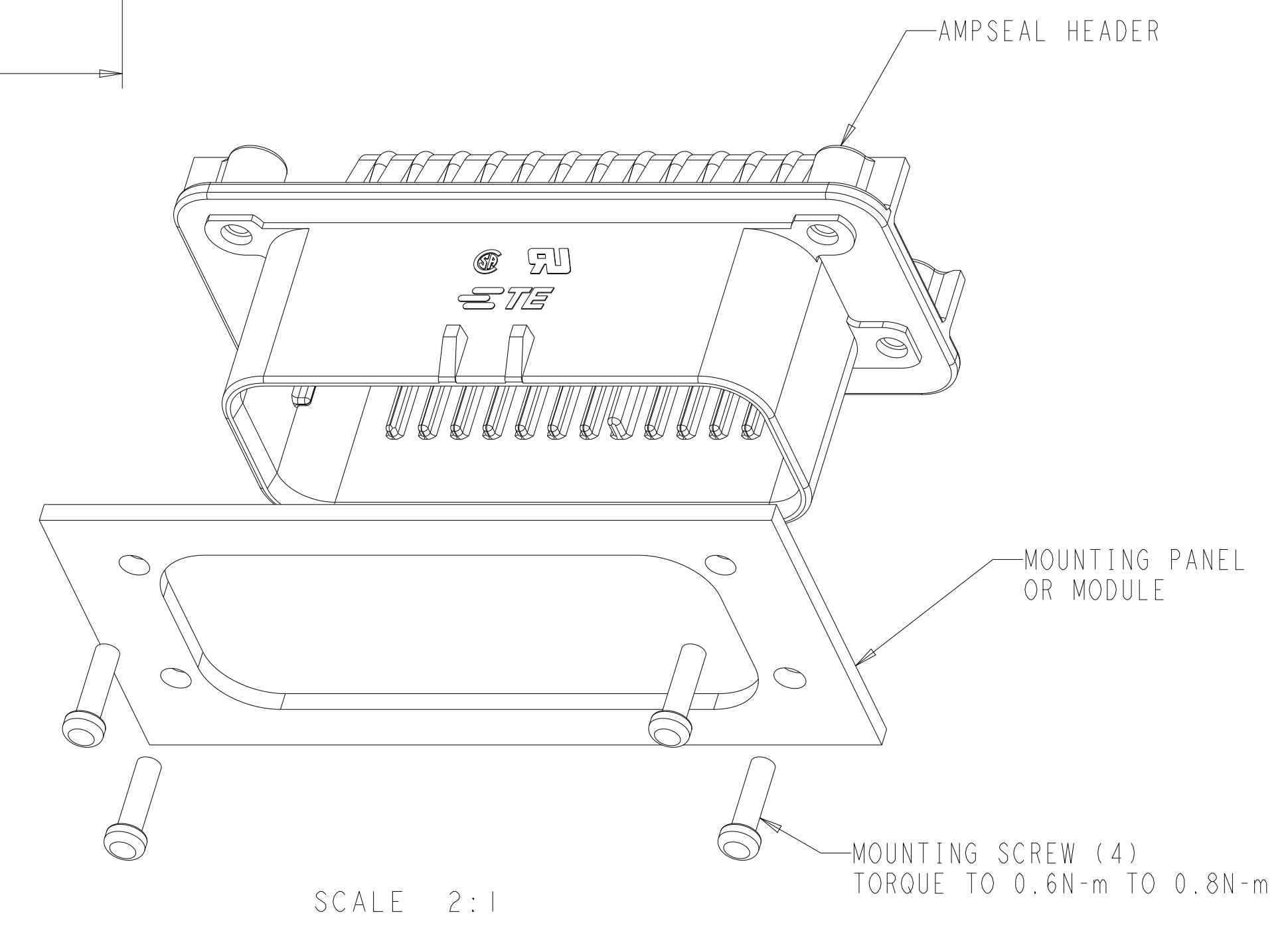
RECOMMENDED P.C. BOARD LAYOUT
 FOR 1.57 THICK P.C. BOARD



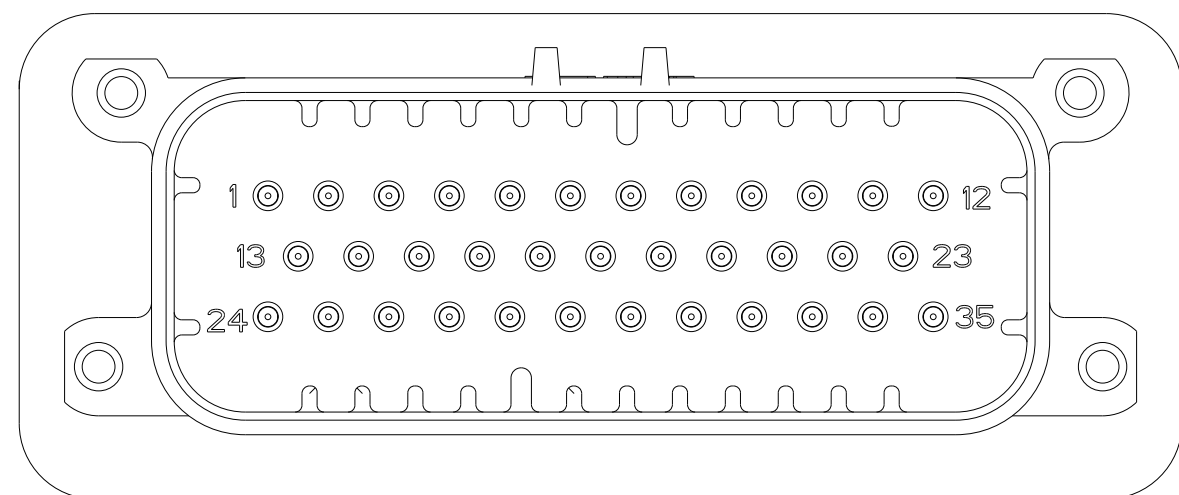
SECTION Z-Z
 OPTIONAL CONSTRUCTION IF
 THICKNESS IS GREATER THAN 2.0
 SCALE 6:1



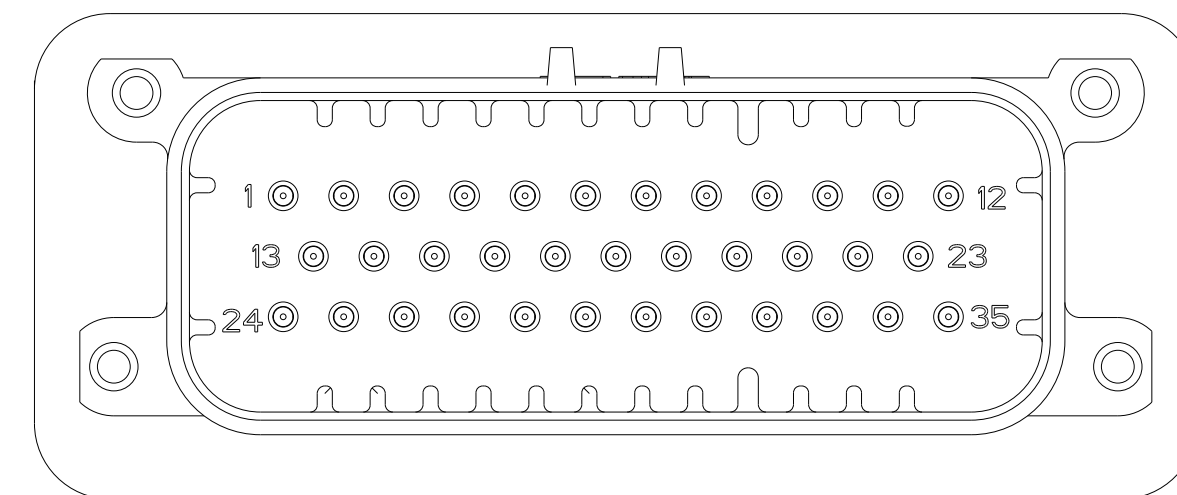
SECTION Z-Z
 OPTIONAL CONSTRUCTION IF
 THICKNESS IS GREATER THAN 2.0
 SCALE 6:1



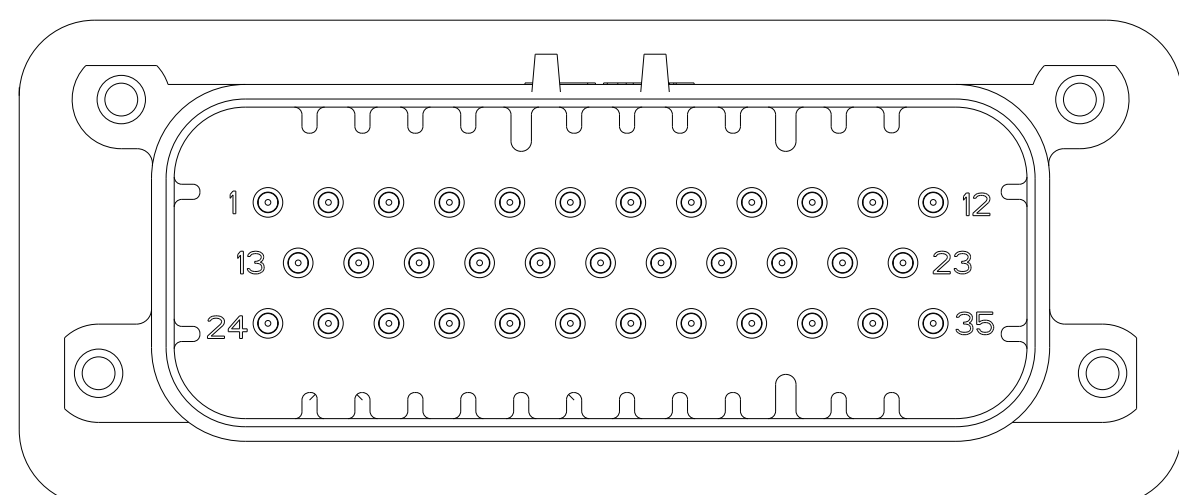
SCALE 2:1



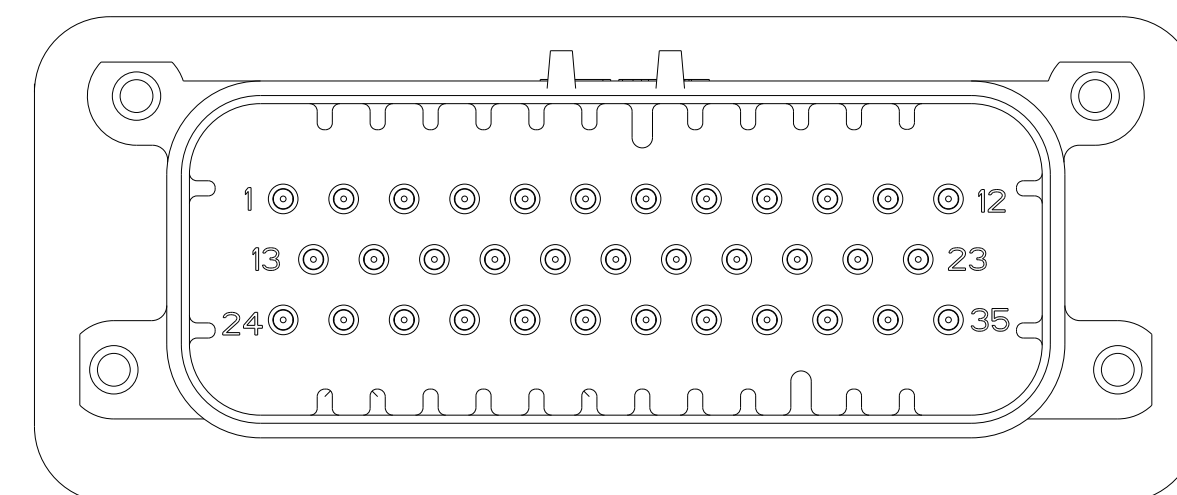
776180-2 & 1-776180-2
 KEY LOCATION AS SHOWN
 SCALE 2:1



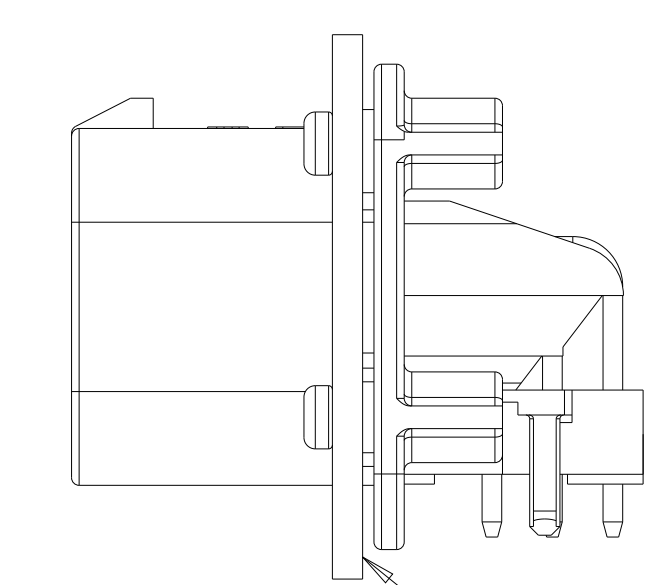
776180-4 & 1-776180-4
 KEY LOCATION AS SHOWN
 SCALE 2:1



776180-5 & 1-776180-5
 KEY LOCATION AS SHOWN
 SCALE 2:1



1-776180-6
 KEY LOCATION AS SHOWN
 SCALE 2:1



SCALE 2:1

ENSURE THE HEADER IS FLUSH
 TO THE PANEL FACE ALL AROUND
 BEFORE TIGHTENING TO FINAL TORQUE

THIS DRAWING IS A CONTROLLED DOCUMENT.		OWN R. VESTAL 31DEC2002	TE Connectivity
DIMENSIONS:		CHK D. CROWE 31DEC2002	
mm	TOLERANCES UNLESS OTHERWISE SPECIFIED:	APVD D. CROWE 31DEC2002	NAME
	0 PLC ± 1 PLC ±0.2 2 PLC ± 3 PLC ± 4 PLC ± ANGLES ± FINISH ±	PRODUCT SPEC 108-1329	HEADER ASSEMBLY, 35 POSITION, RIGHT ANGLE, AMPSEAL
MATERIAL		APPLICATION SPEC 114-16016	RESTRICTED TO
		WEIGHT 40.45g	SIZE CAGE CODE DRAWING NO A100779C=776180
		CUSTOMER DRAWING	SCALE 4:1 SHEET 2 OF 2 REV J1