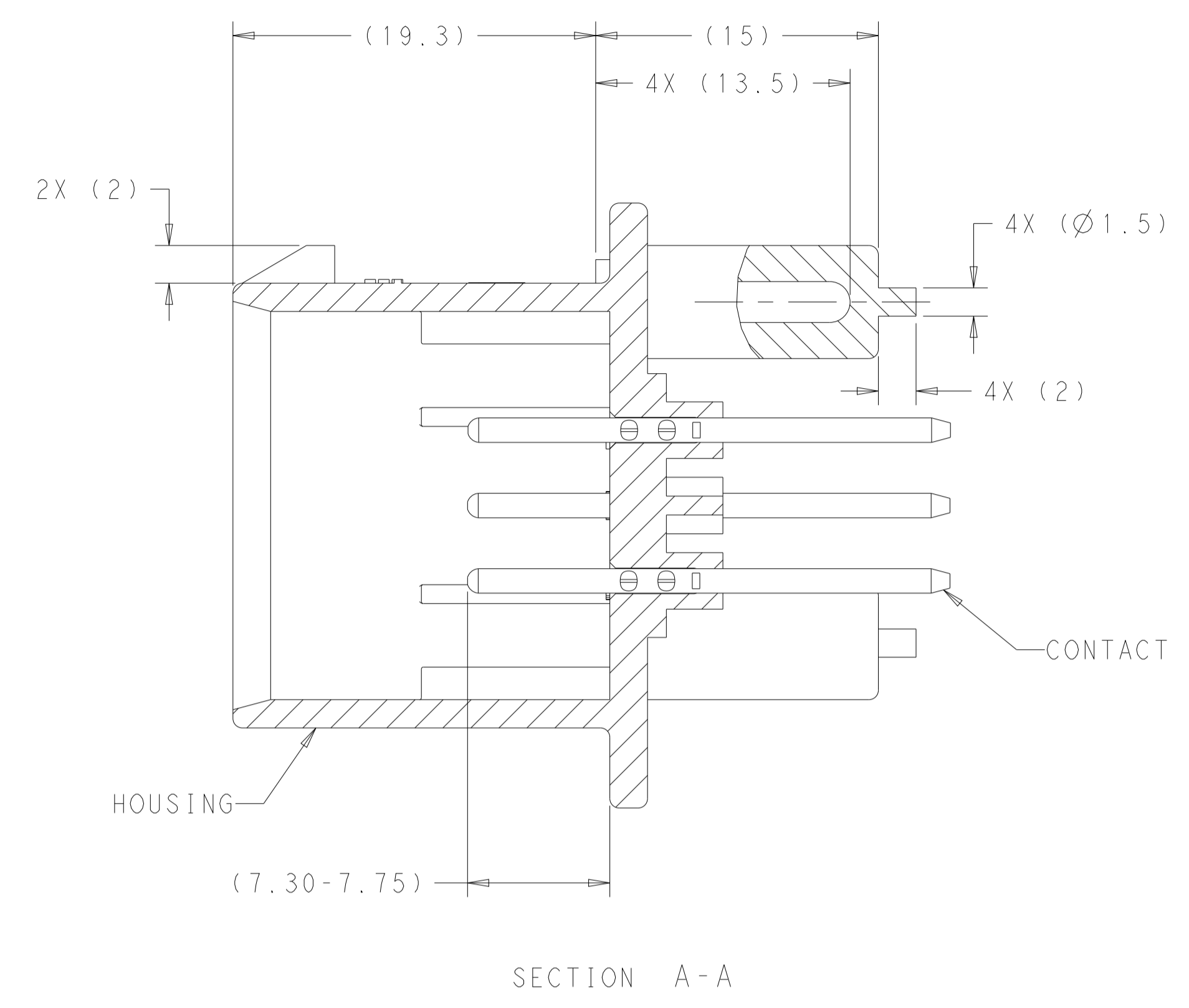
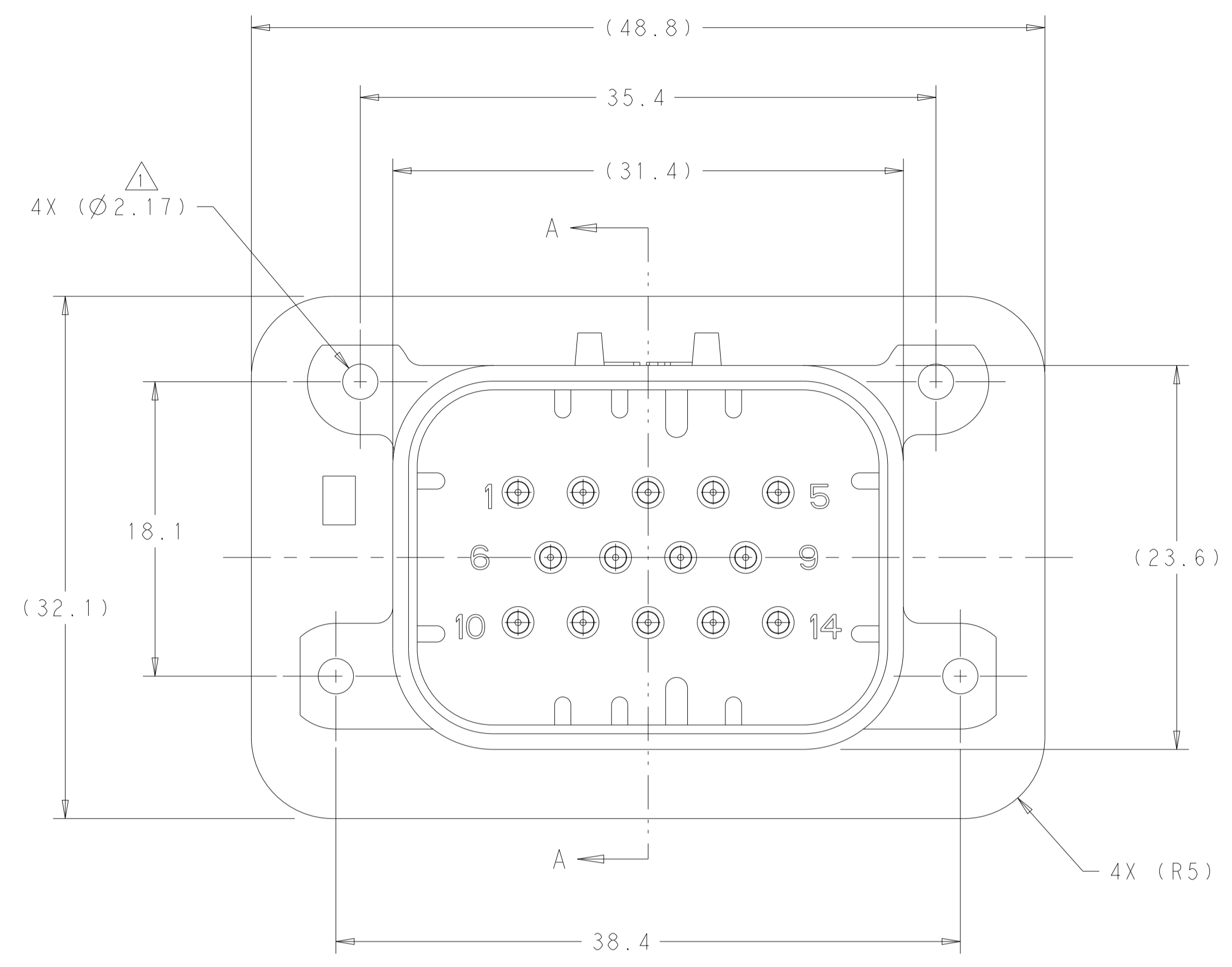


REVISIONS				
P	LTN	DESCRIPTION	DATE	OWN APVD
A11		REVISED PER ECO-21-001365	26JAN2021	DS DS
A12		REVISED PER ECR-24-216938	13SEP2024	DK CB



1 SUGGESTED MOUNTING SCREW SIZE IS Ø2.50mm [APPROX. 0.099 INCH] SELF TAPPING THREAD FORMING SCREW, SUCH AS DELTA PT., TO BE DRIVEN AT 0.6-0.8 N-m. THE CUSTOMER MUST TEST THE SCREW SIZE AND TYPE IN ORDER TO VERIFY THEIR SELECTION BEFORE USE IN APPLICATION

TO VALIDATE HEADER MOUNTING PERFORMANCE, TE CONNECTIVITY WILL CONTINUE TO UTILIZE THE FOLLOWING TORQUE VALIDATION PROCESS ACCORDING TO APPLICATION SPEC 114-16016:
 MOUNTING PANEL THICKNESS - 4.75 +/- 0.15mm
 SCREW - 2.5X12mm DELTA PT

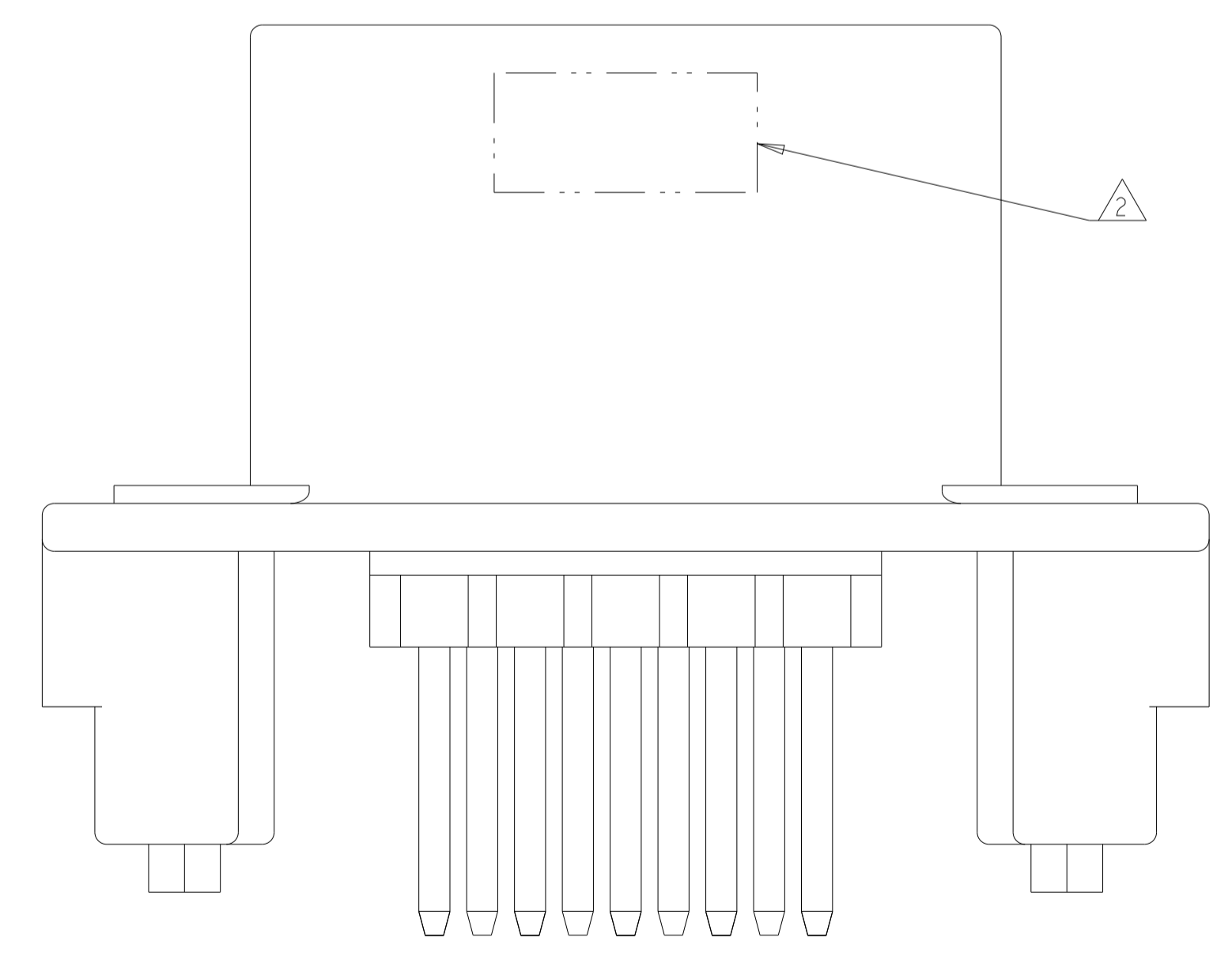
CUSTOMERS MAY VALIDATE OTHER SCREW SIZES AND TYPES AT THEIR OWN DISCRETION

2 DATE CODE IN THIS LOCATION USING 5 DIGIT CODE
 FIRST 2 DIGITS = YEAR, SECOND 2 DIGITS = WEEK
 LAST DIGIT = DAY.

3 MATERIALS: HEADER HOUSING - GLASS FILLED PBT
 PINS - TIN OR GOLD PLATED BRASS

4 HOUSING COLORS ARE MECHANICALLY KEYPED TO MATE ONLY WITH IDENTICALLY COLORED PLUG ASSEMBLIES.

5. HEADER MATES TO PLUG ASSEMBLY 776273 WHICH USES REELED TERMINAL 770520 OR LOOSE PIECE TERMINAL 770854



776261-1 & 1-776261-1 SHOWN

BLUE	GOLD	1-776261-5
GRAY	GOLD	1-776261-4
NATURAL	GOLD	1-776261-2
BLACK	GOLD	1-776261-1
BLUE	TIN	776261-5
GRAY	TIN	776261-4
NATURAL	TIN	776261-2
BLACK	TIN	776261-1
HEADER COLOR	PLATING	PART NUMBER

THIS DRAWING IS A CONTROLLED DOCUMENT.

OWN: D. STRAUSSER 04FEB2010
 CHK: D. STRAUSSER 22MAR2010
 APVD: D. STRAUSSER 27APR2010

TE Connectivity

NAME: HEADER ASSEMBLY, 14 POSITION, VERTICAL, AMPSEAL

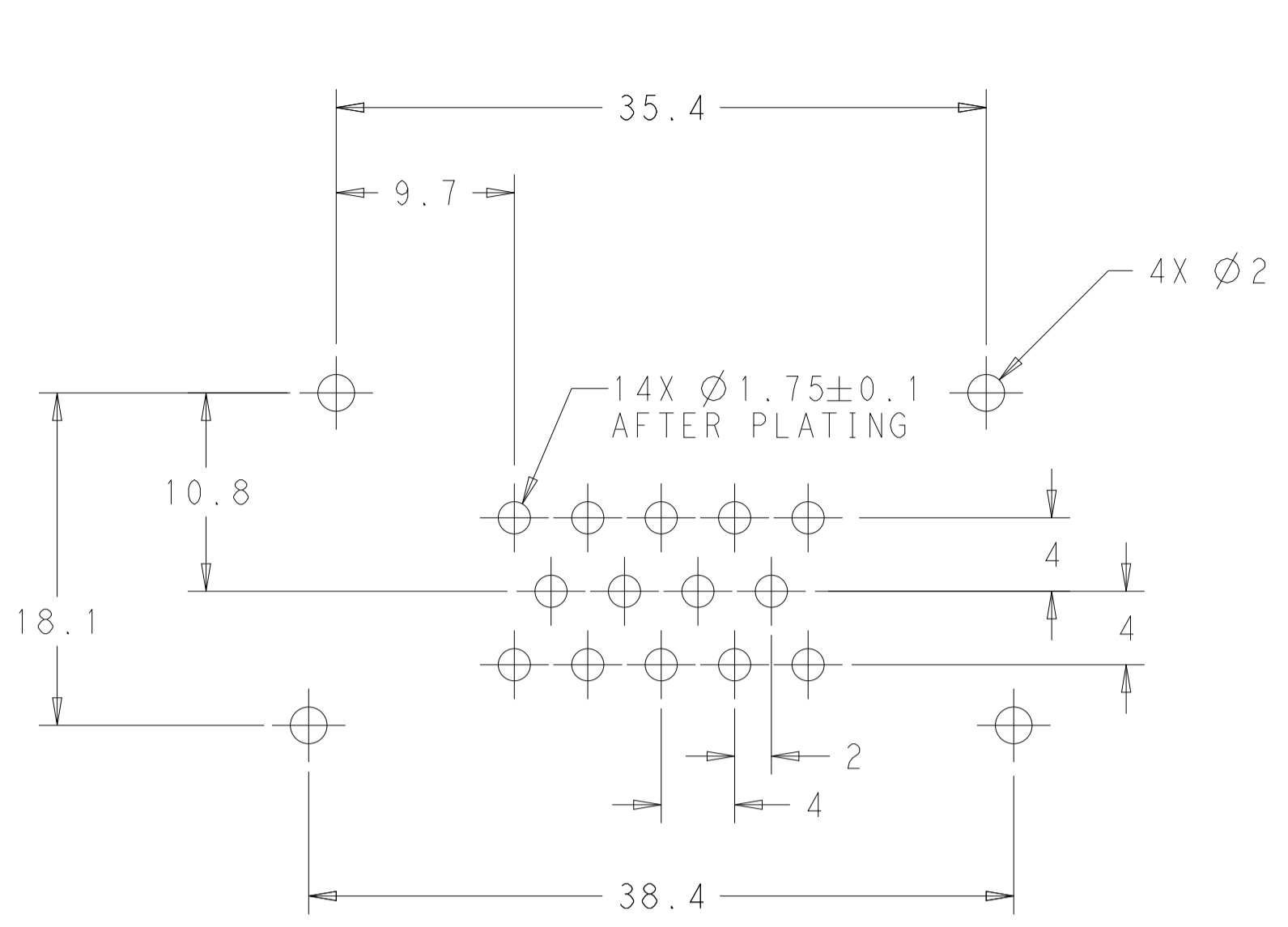
PRODUCT SPEC: 108-1329
 APPLICATION SPEC: 114-16016

SIZE: A1 CAGE CODE: 00779 DRAWING NO: 776261
 WEIGHT: 16.90g

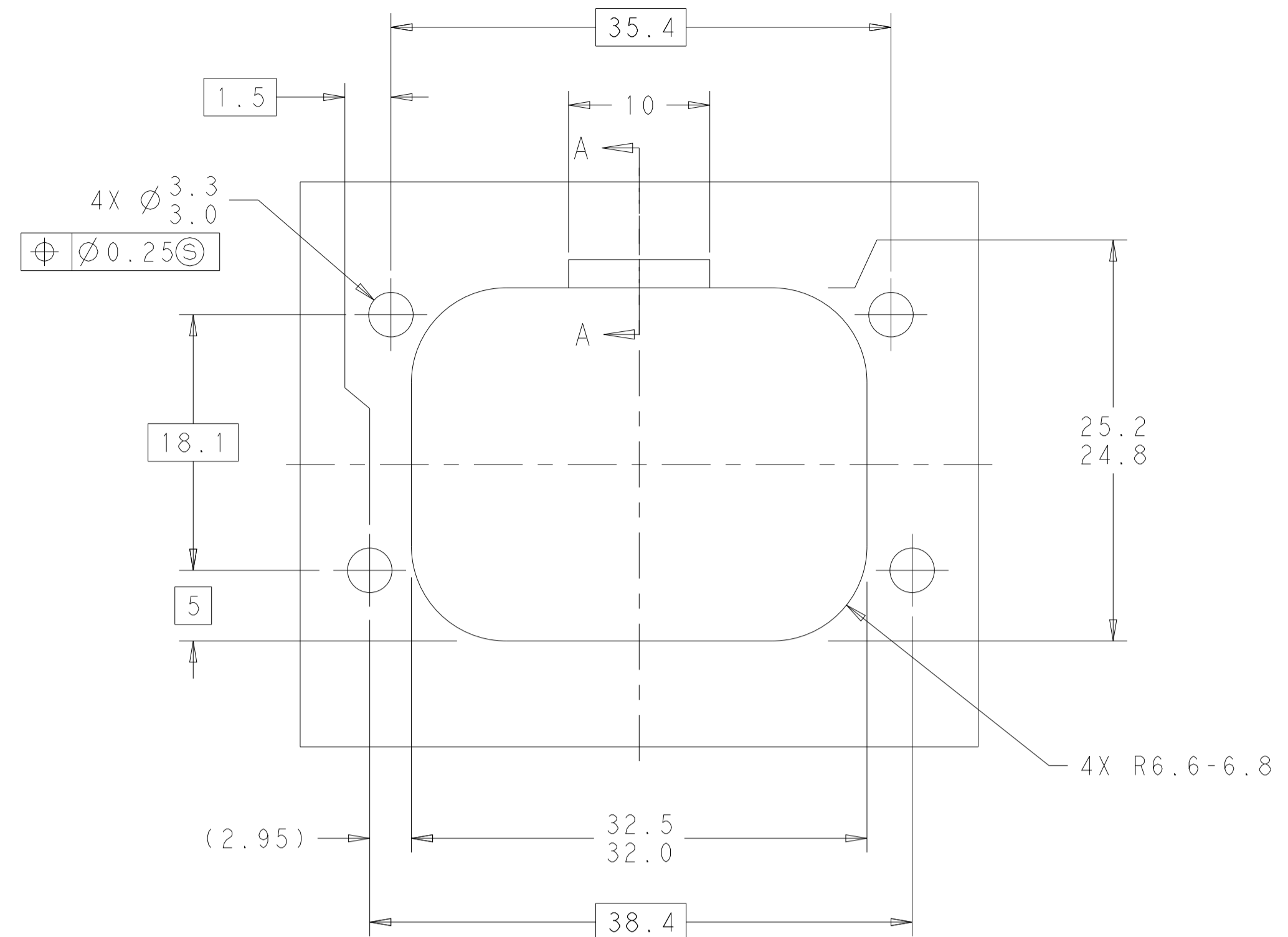
MATERIAL: 3 FINISH: 3

CUSTOMER DRAWING SCALE: 4:1 SHEET: 1 OF 2 REV: A12

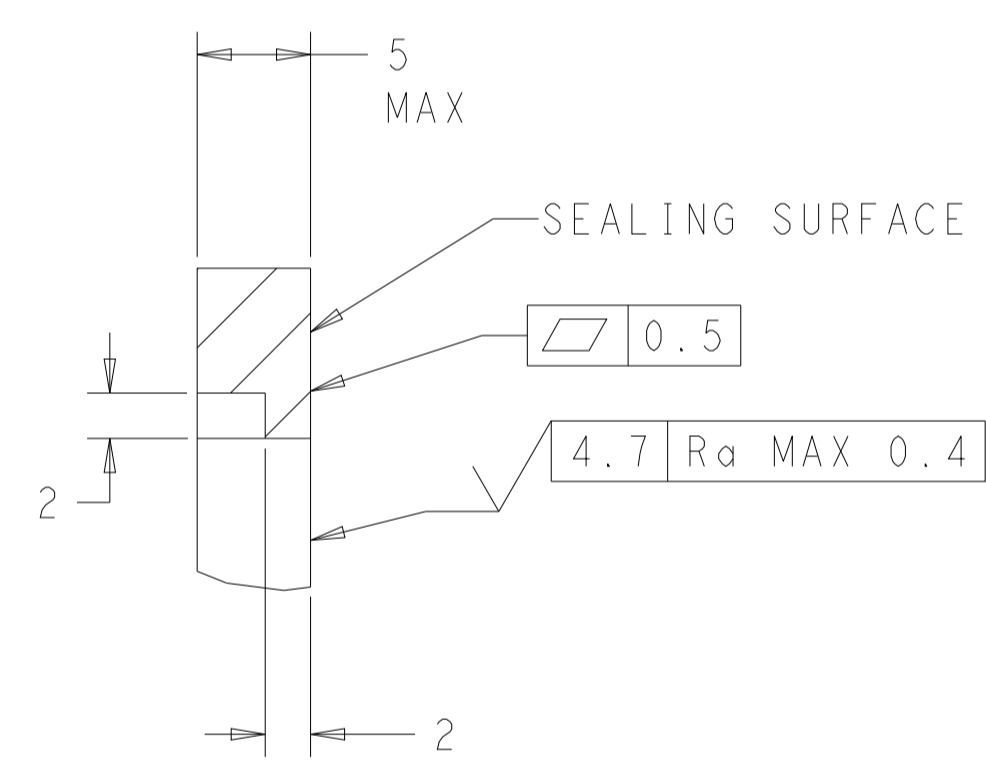
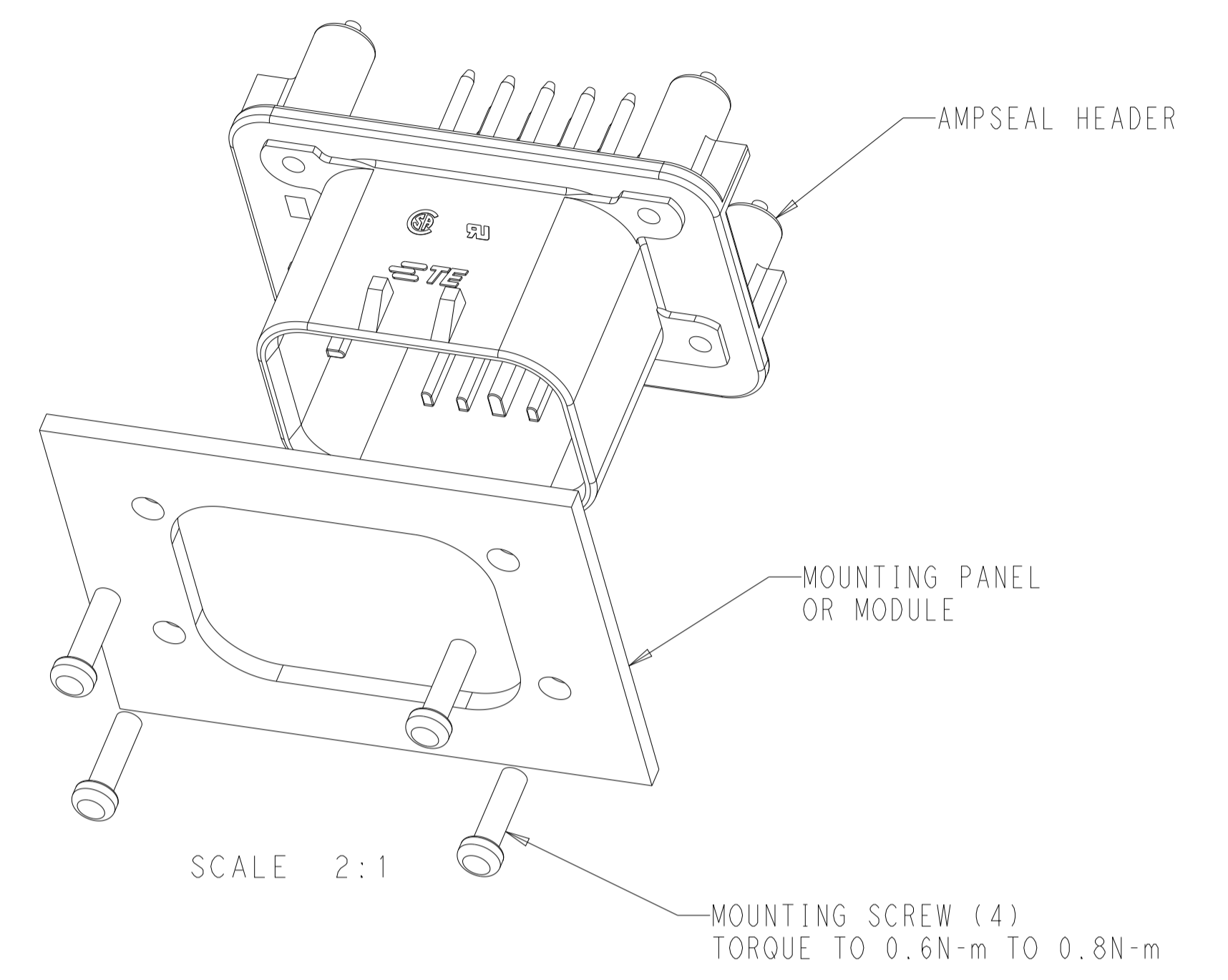
REVISIONS				
P. LTH	DESCRIPTION	DATE	OWN	APVD
-	SEE SHEET 1	-	-	-



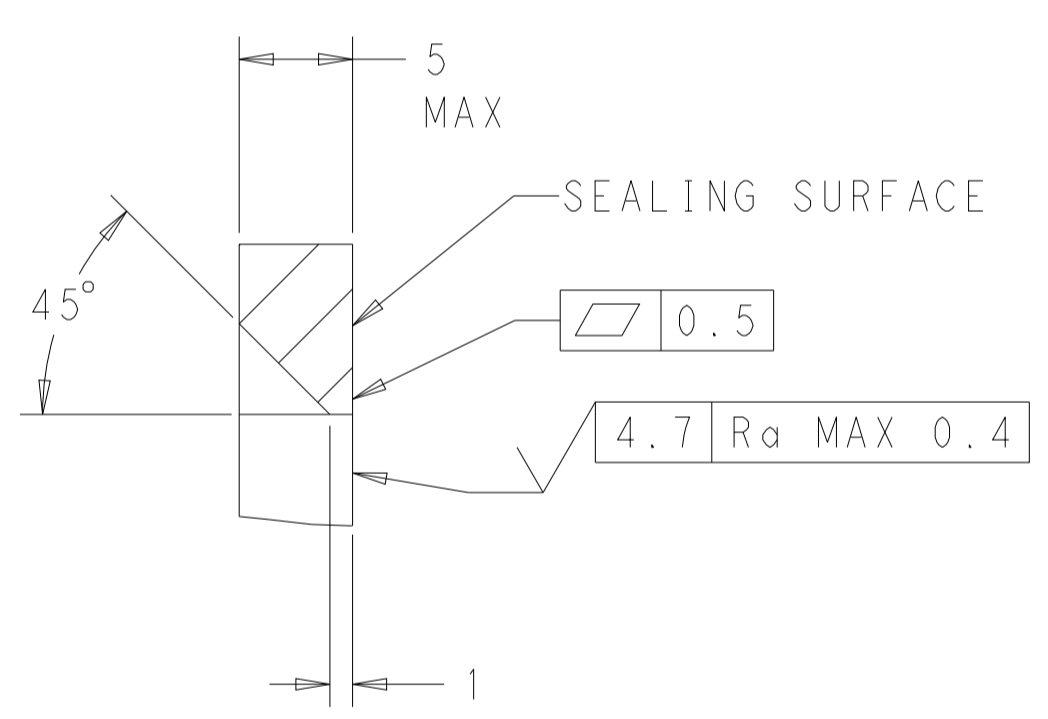
RECOMMENDED P.C. BOARD LAYOUT FOR 1.57 THICK P.C. BOARD



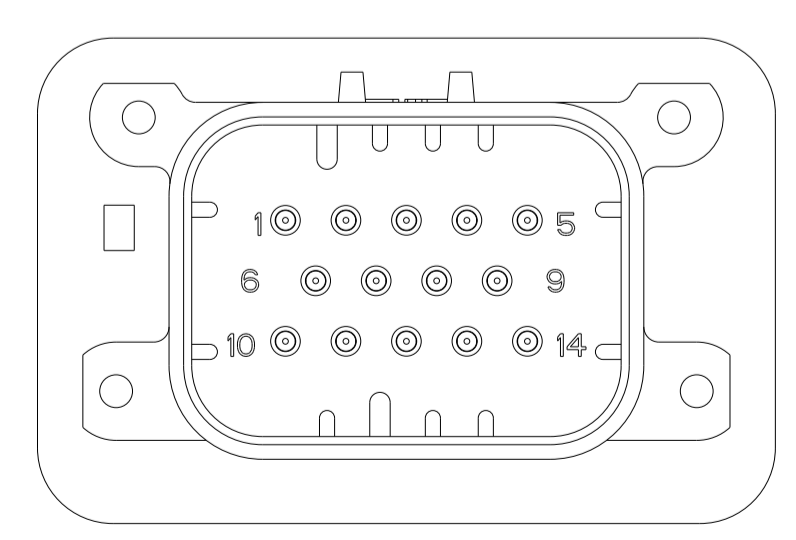
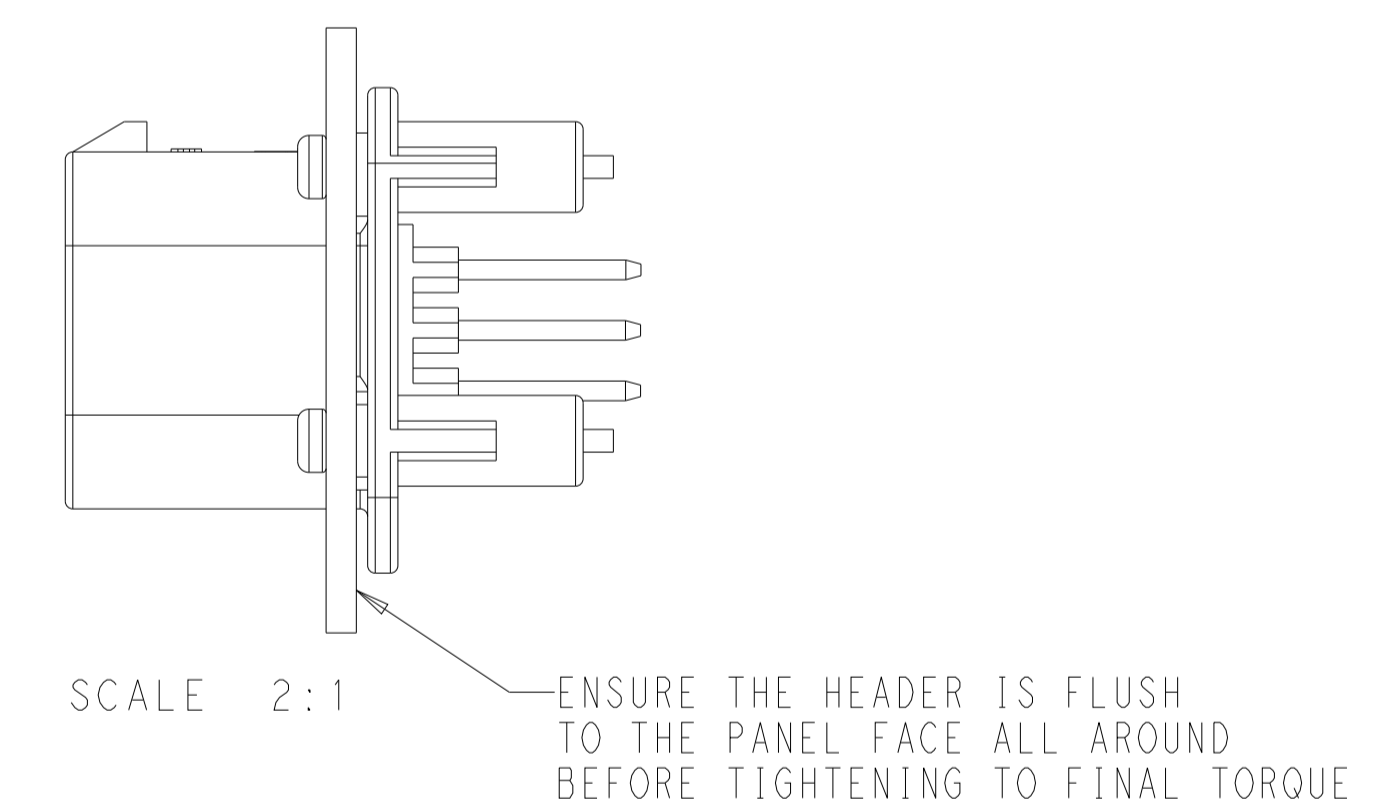
RECOMMENDED MOUNTING HOLE LAYOUT FOR 5.0 MAX THICK PANEL



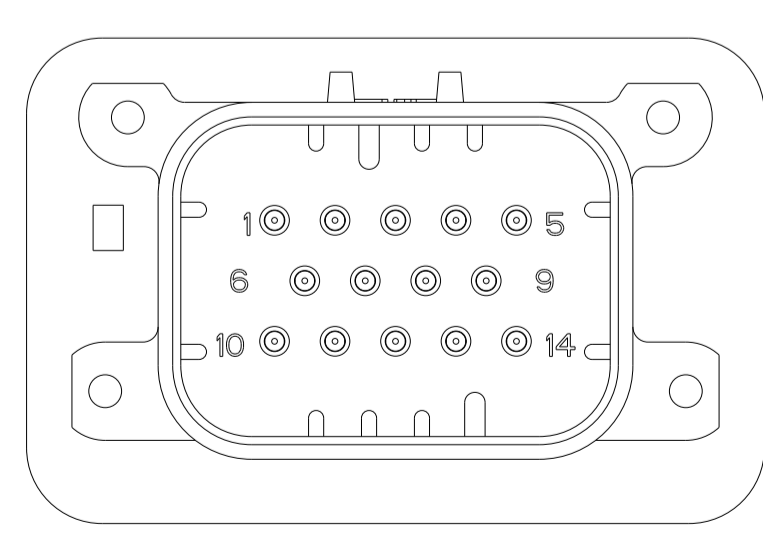
SECTION A-A
 OPTIONAL CONSTRUCTION IF PANEL THICKNESS IS GREATER THAN 2.0



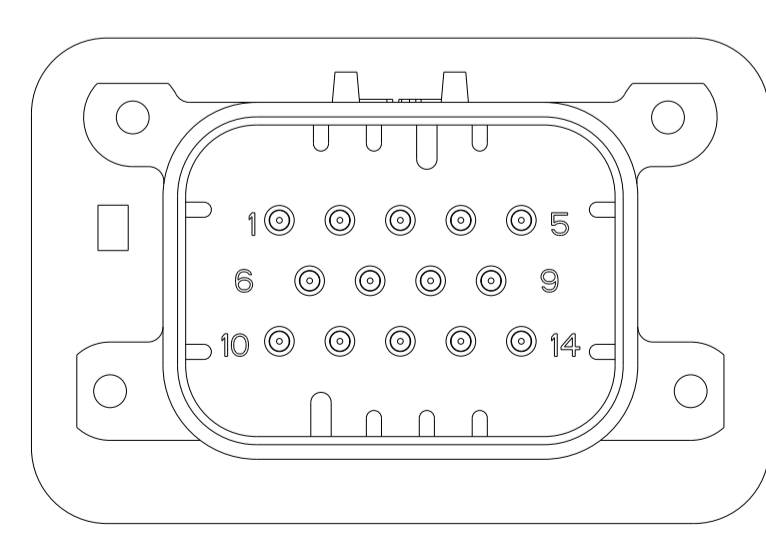
SECTION A-A
 OPTIONAL CONSTRUCTION IF PANEL THICKNESS IS GREATER THAN 2.0



776261-2 & 1-776261-2
 KEY LOCATION
 SCALE 2:1



776261-4 & 1-776261-4
 KEY LOCATION
 SCALE 2:1



776261-5 & 1-776261-5
 KEY LOCATION
 SCALE 2:1

THIS DRAWING IS A CONTROLLED DOCUMENT.		OWN: D. STRAUSSER 04FEB2010	TE Connectivity NAME: HEADER ASSEMBLY, 14 POSITION, VERTICAL, AMPSEAL	
DIMENSIONS: mm		CHK: D. STRAUSSER 22MAR2010		
TOLERANCES UNLESS OTHERWISE SPECIFIED:		APVD: D. STRAUSSER 27APR2010	RESTRICTED TO	
0 PLC	±	PRODUCT SPEC	SIZE: CAGE CODE: DRAWING NO: 114-16016	
1 PLC	±0.2	APPLICATION SPEC	WEIGHT: 16.90g	
2 PLC	±	APPLICATION SPEC	CUSTOMER DRAWING	
3 PLC	±	APPLICATION SPEC	SCALE: 4:1 SHEET 2 OF 2	
4 PLC	±	APPLICATION SPEC	REV: A12	
ANGLES	±	APPLICATION SPEC		
FINISH	±	APPLICATION SPEC		