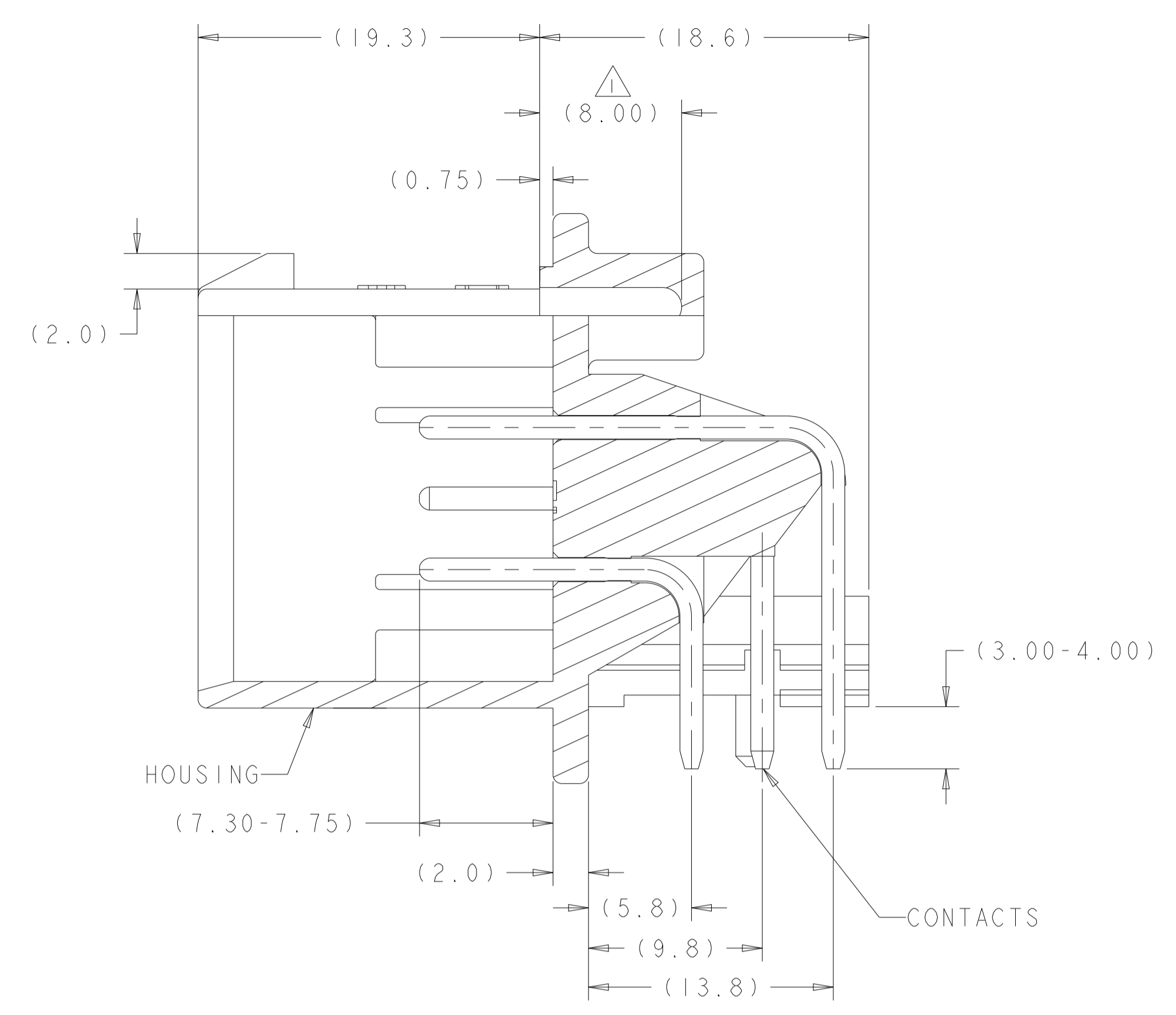
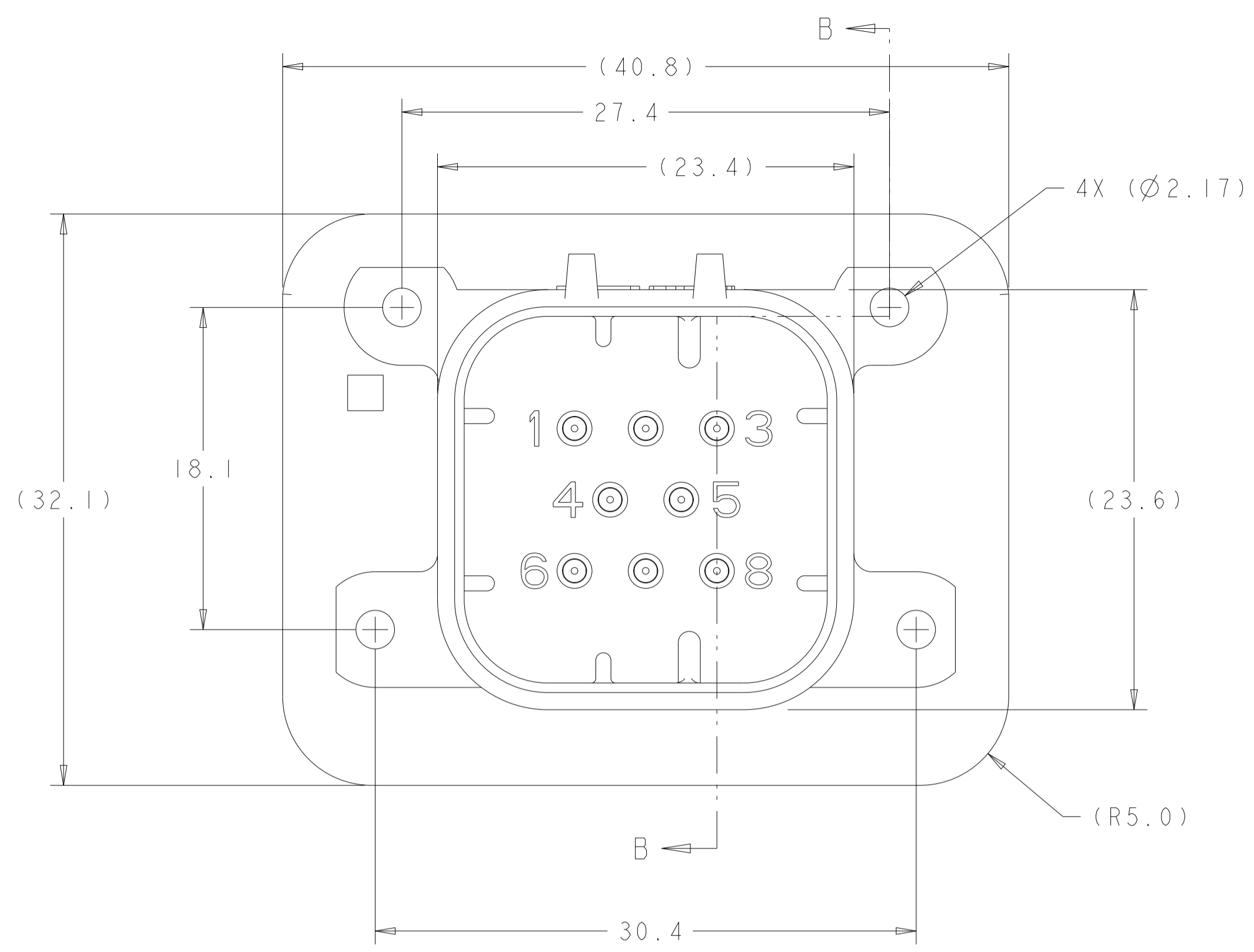


REVISIONS				
P	LTN	DESCRIPTION	DATE	APVD
F12	ECR-23-187853		21SEP2023	DCS DCS
F13	ECR-24-216938		16SEP2024	DK CB



SECTION B-B

1 SUGGESTED MOUNTING SCREW SIZE IS Ø2.50mm [APPROX. 0.099 INCH] SELF TAPPING THREAD FORMING SCREW, SUCH AS DELTA PT, TO BE DRIVEN AT 0.6-0.8 N-m. THE CUSTOMER MUST TEST THE SCREW SIZE AND TYPE IN ORDER TO VERIFY THEIR SELECTION BEFORE USE IN APPLICATION

TO VALIDATE HEADER MOUNTING PERFORMANCE, TE CONNECTIVITY WILL CONTINUE TO UTILIZE THE FOLLOWING TORQUE VALIDATION PROCESS ACCORDING TO APPLICATION SPEC 114-16016:
 MOUNTING PANEL THICKNESS - 4.75 +/- 0.15mm
 SCREW - 2.5X12mm DELTA PT

CUSTOMERS MAY VALIDATE OTHER SCREW SIZES AND TYPES AT THEIR OWN DISCRETION

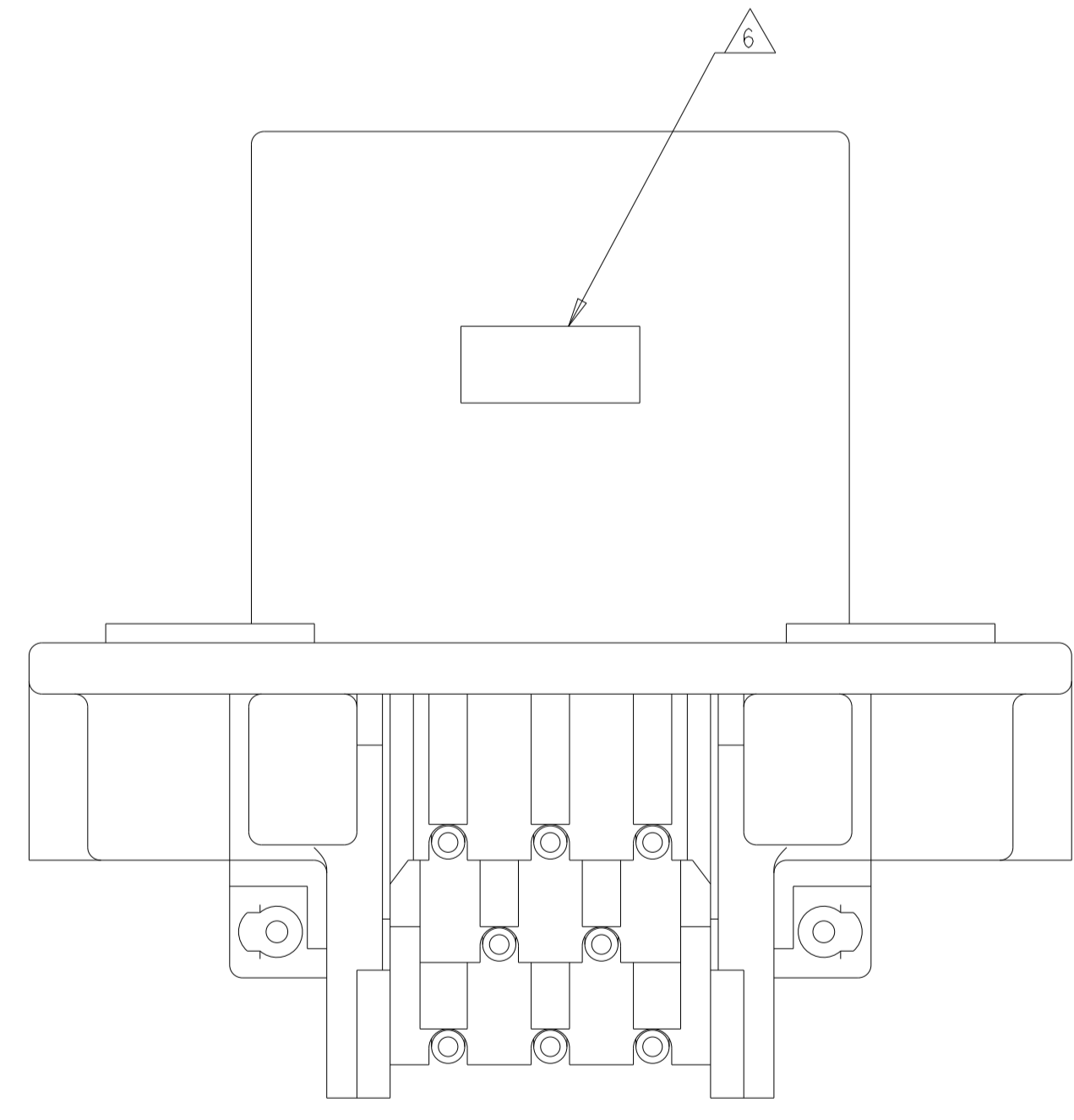
2 HOUSING COLORS ARE MECHANICALLY KEYED TO MATE ONLY WITH IDENTICALLY COLORED PLUG ASSEMBLIES.

3 NOTE REMOVED

4. HEADER MATES TO PLUG ASSEMBLY 776286 WHICH USES REELED TERMINAL 770520 AND LOOSE PIECE TERMINAL 770854.

5 MATERIALS: GASKET - SILICONE
 HEADER HOUSING - GLASS FILLED PBT
 PINS - TIN OR GOLD PLATED BRASS

6 DATE CODE TO BE BRANDED IN THIS LOCATION PER TE SPEC 102-60. USE 5 DIGIT CODE: FIRST 2 DIGITS = YEAR, SECOND 2 DIGITS = WEEK, LAST DIGIT = DAY



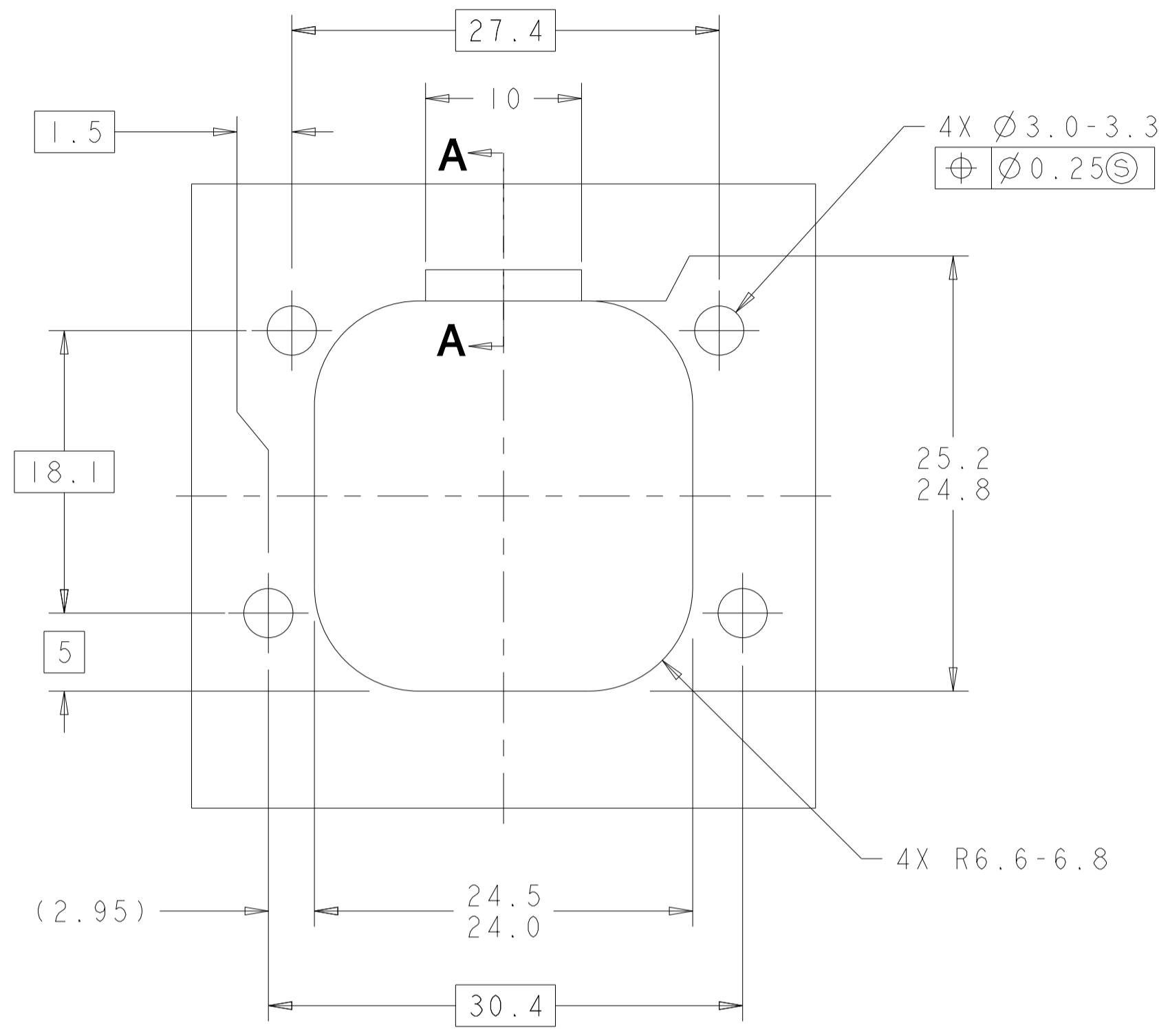
NATURAL	GOLD PLATED	1-776279-2
BLACK	GOLD PLATED	1-776279-1
OBSOLETE		776279-6
NATURAL	TIN PLATED	776279-2
BLACK	TIN PLATED	776279-1
HEADER HOUSING COLOR	PIN	PART NUMBER

THIS DRAWING IS A CONTROLLED DOCUMENT.

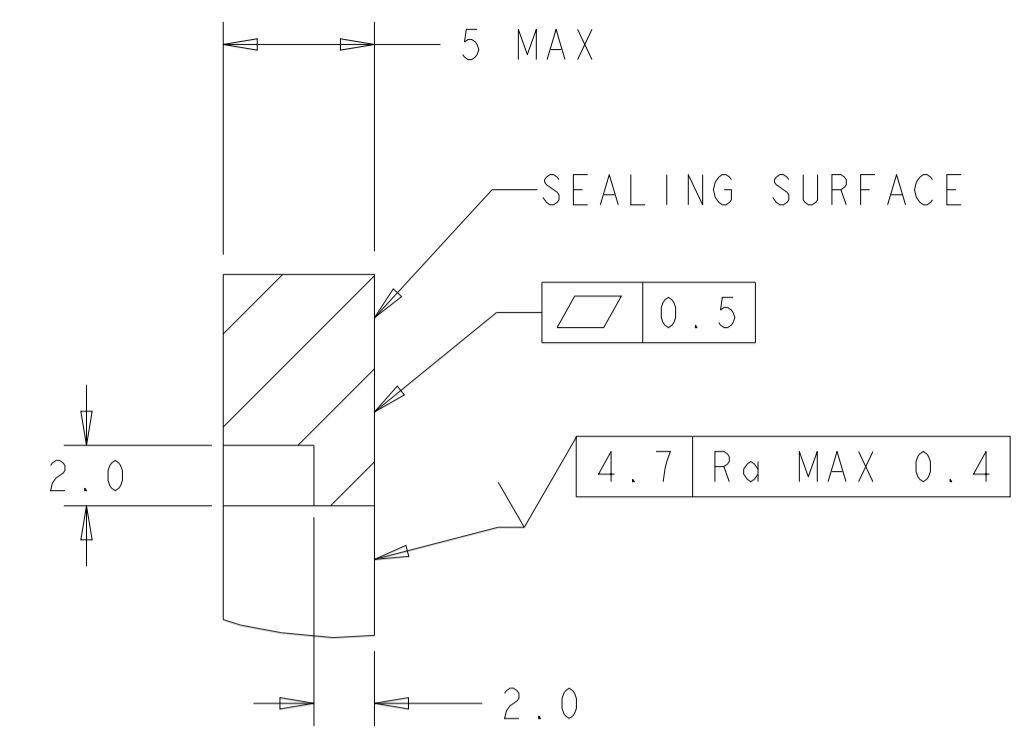
DIMENSIONS:	TOLERANCES UNLESS OTHERWISE SPECIFIED:	OWN J. MARKEY 29FEB08	NAME
mm	0 PLC ±0.2	CHK J. MARKEY 29FEB08	HEADER ASSEMBLY, 8 POSITION, RIGHT ANGLE, AMPSEAL
	2 PLC ±0.13	APVD J. MARKEY 29FEB08	PRODUCT SPEC
	3 PLC ±0.13		108-1329
	4 PLC ±0.13		APPLICATION SPEC
	ANGLES ±5°		SIZE CAGE CODE DRAWING NO
MATERIAL	FINISH	WEIGHT 15.62g	RESTRICTED TO
		CUSTOMER DRAWING	A100779C=776279

SCALE 4:1 SHEET 1 OF 2 REV F13

REVISIONS				
P.	LTN.	DESCRIPTION	DATE	APVD.
-	-	SEE SHEET 1	-	-

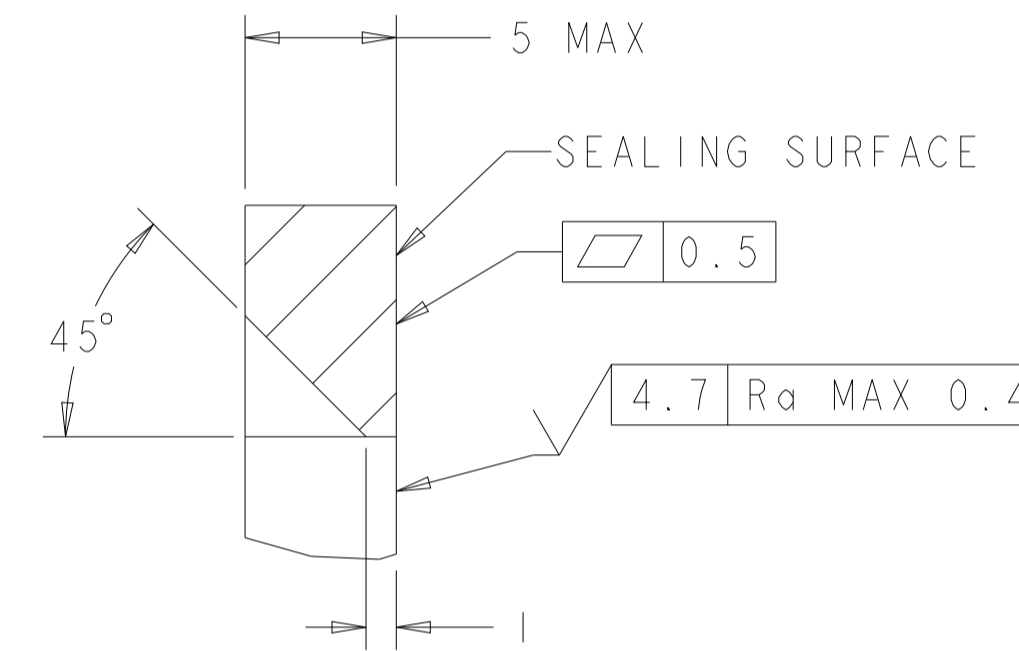


RECOMMENDED MOUNTING HOLE LAYOUT FOR 5.0 MAX THICK PANEL



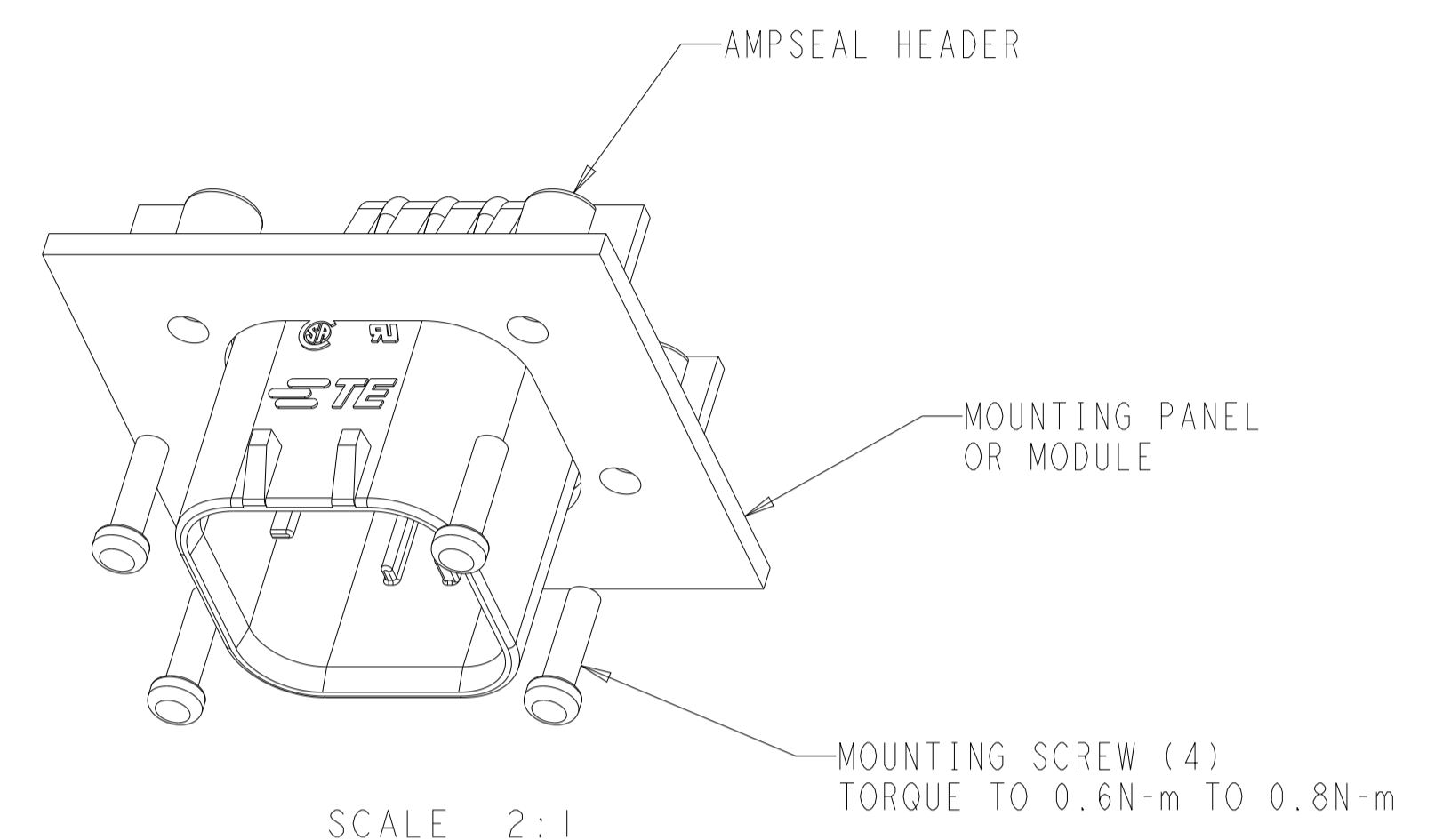
SECTION A-A
 OPTIONAL CONSTRUCTION IF PANEL THICKNESS IS GREATER THAN 2.0

SCALE 4:1

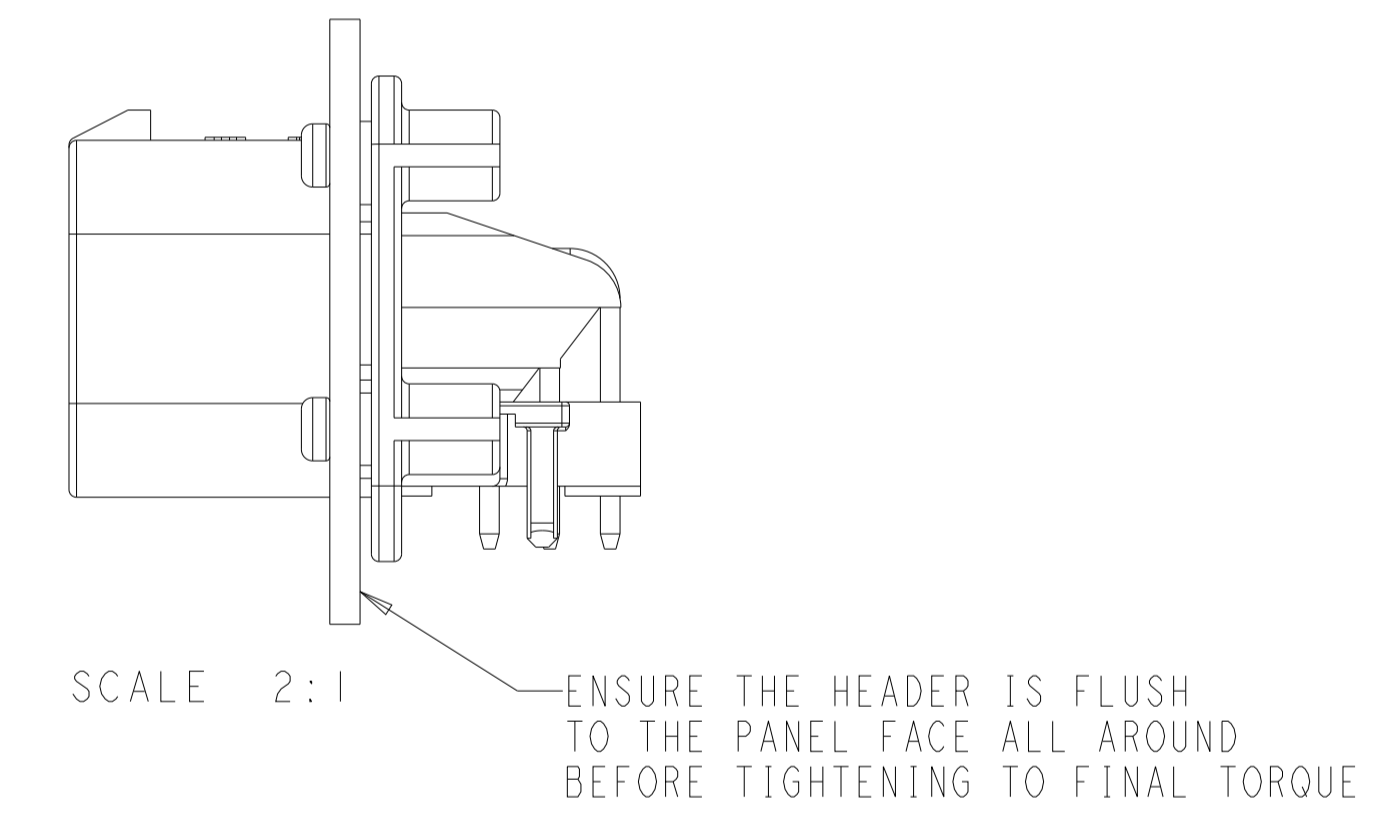


SECTION A-A
 OPTIONAL CONSTRUCTION IF PANEL THICKNESS IS GREATER THAN 2.0

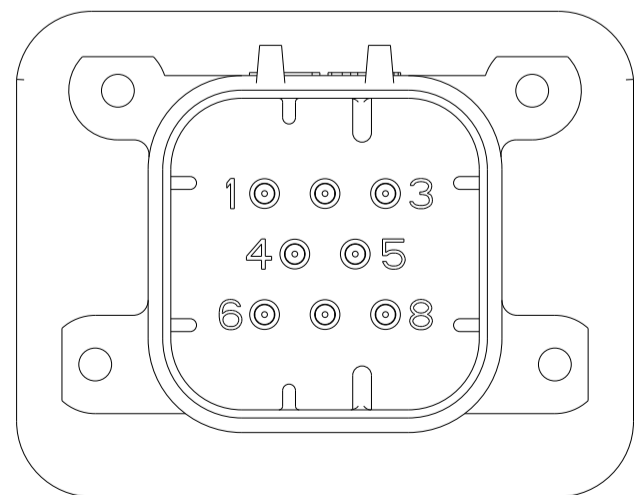
SCALE 4:1



SCALE 2:1

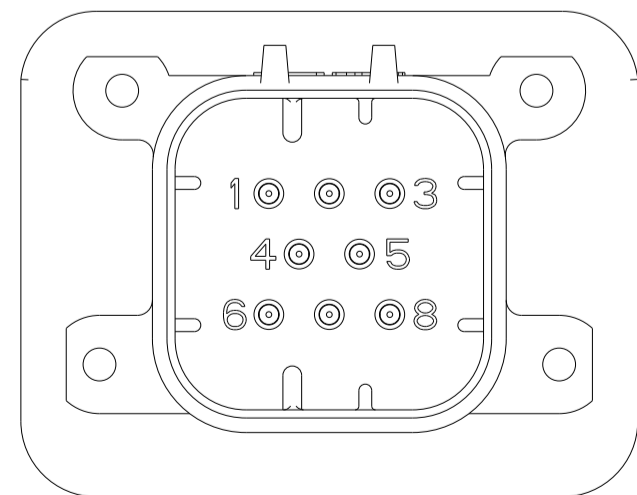


SCALE 2:1



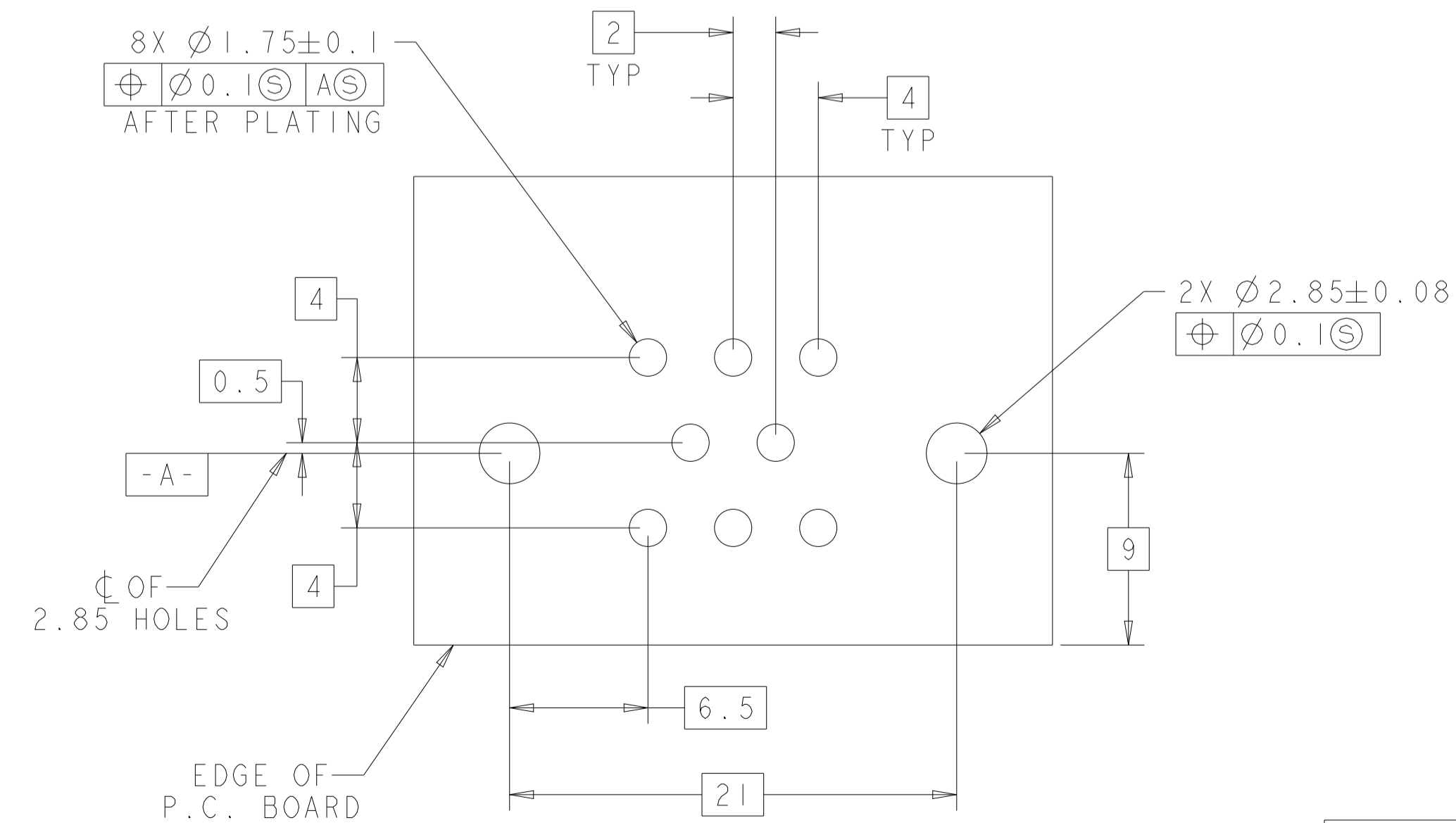
776279-1 & 1-776279-1
 KEY LOCATION

SCALE 2:1



776279-2 & 1-776279-2
 KEY LOCATION

SCALE 2:1



RECOMMENDED P.C. BOARD LAYOUT FOR 1.57 THICK P.C. BOARD

THIS DRAWING IS A CONTROLLED DOCUMENT.		OWN: J. MARKEY 29FEB08	TE Connectivity
DIMENSIONS: mm		CHK: J. MARKEY 29FEB08	
TOLERANCES UNLESS OTHERWISE SPECIFIED:		APVD: J. MARKEY 29FEB08	NAME: HEADER ASSEMBLY, 8 POSITION, RIGHT ANGLE, AMPSEAL
0 PLC	±	PRODUCT SPEC	SIZE: CAGE CODE DRAWING NO
1 PLC	±0.2	APPLICATION SPEC	RESTRICTED TO
2 PLC	±0.13	108-1329	SCALE 4:1 SHEET 2 OF 2 REV F13
3 PLC	±	114-16016	
4 PLC	±	WEIGHT 15.62g	
ANGLES	±5°	CUSTOMER DRAWING	
MATERIAL FINISH		A100779C=776279	