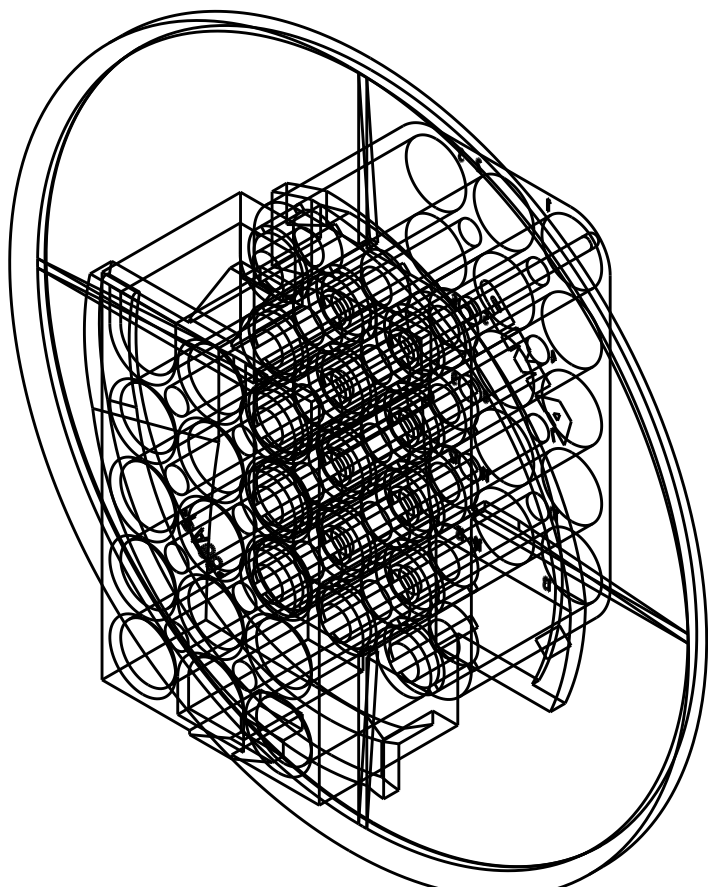
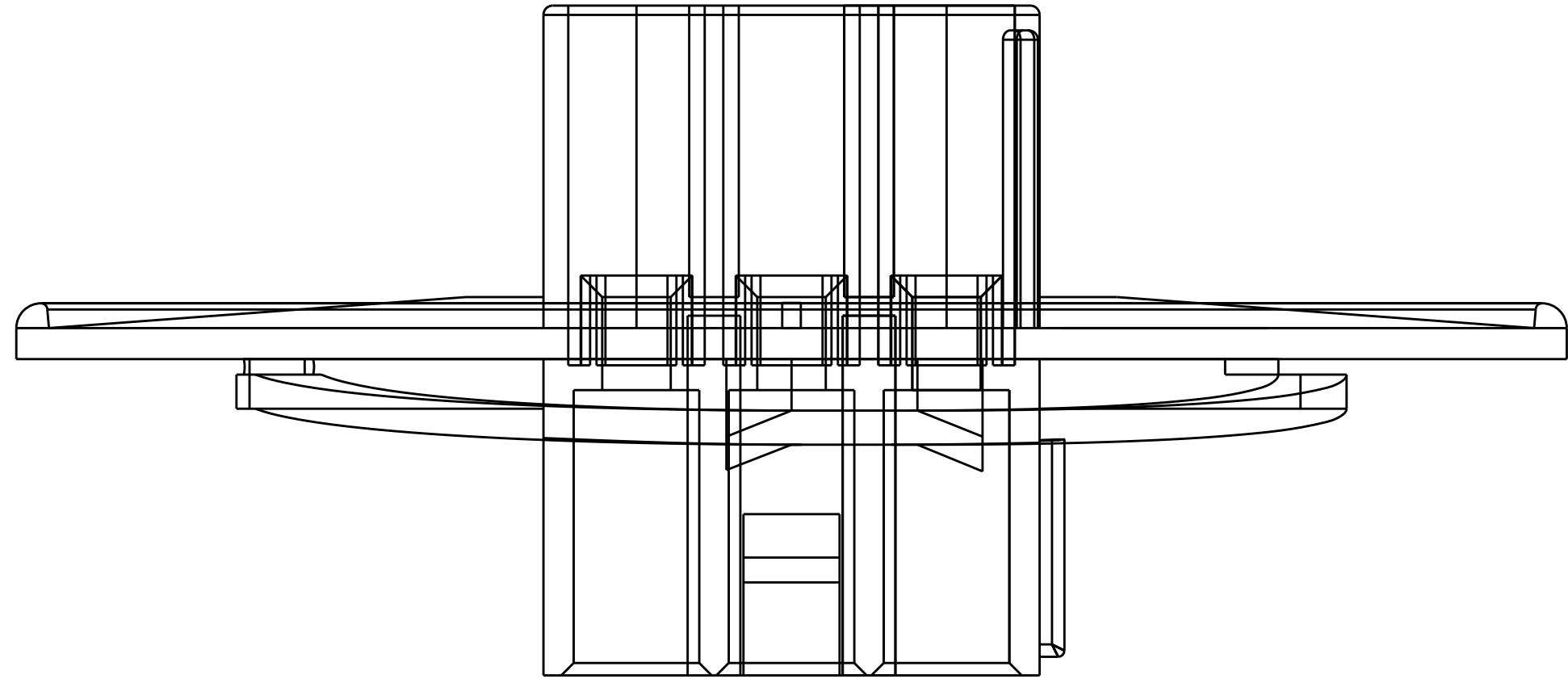
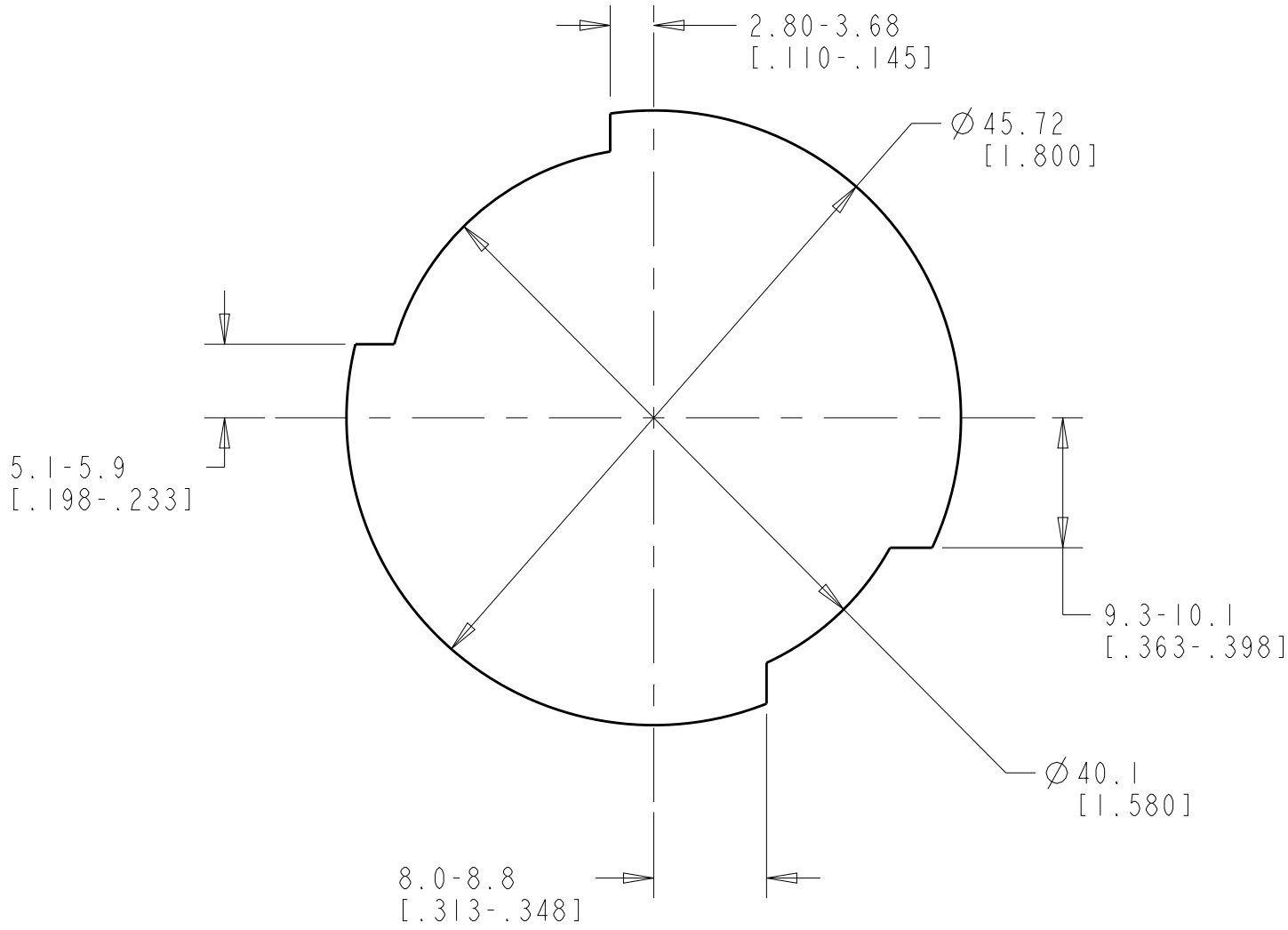


LOC		DIST		REVISIONS					
CM		53		P	LTR	DESCRIPTION	DATE	DWN	APVD
				3		REVISED PER ECO-17-011927	23AUG2017	RS	KR

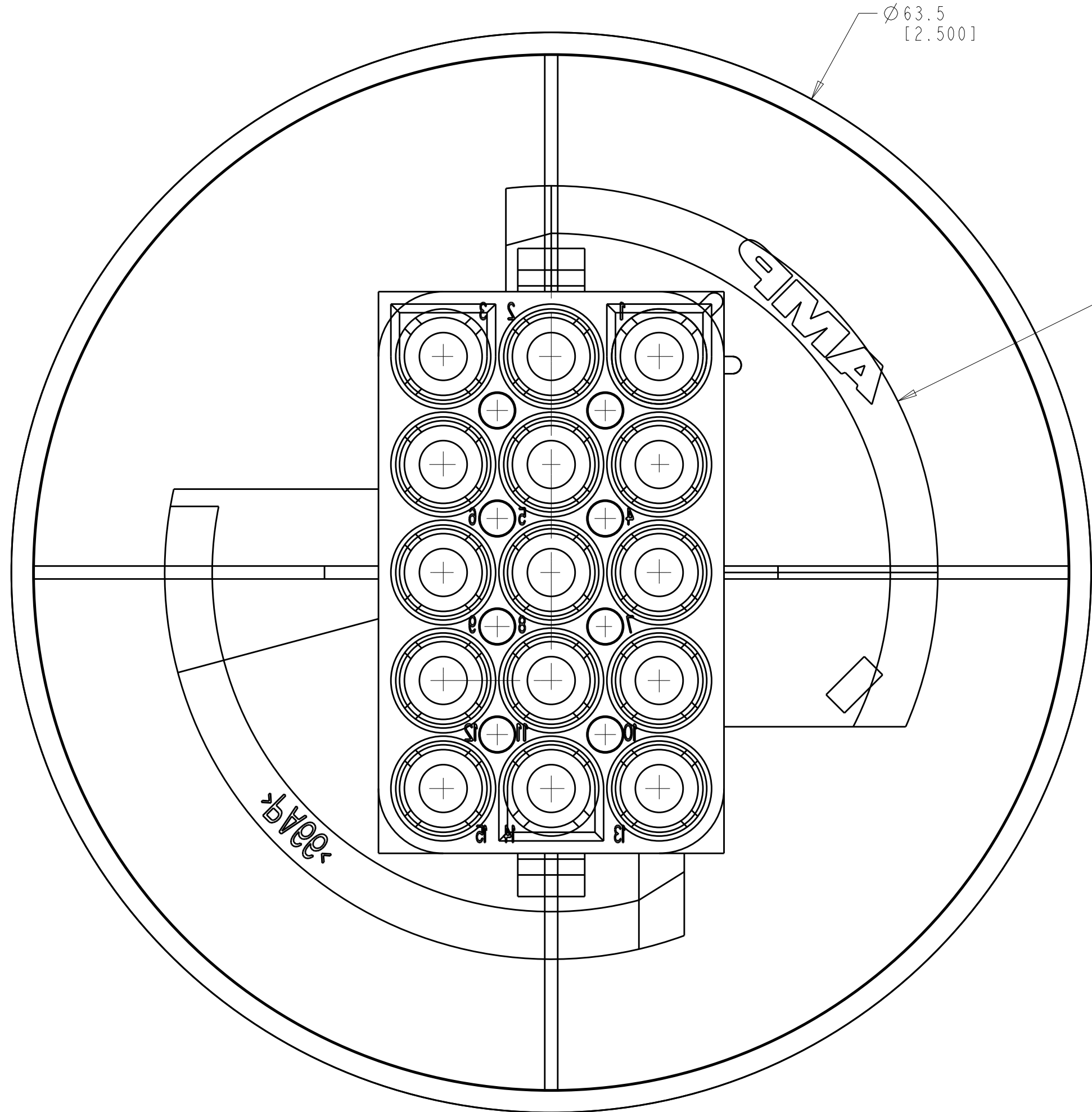


3-DIMENSIONAL MODEL
SCALE 2:1



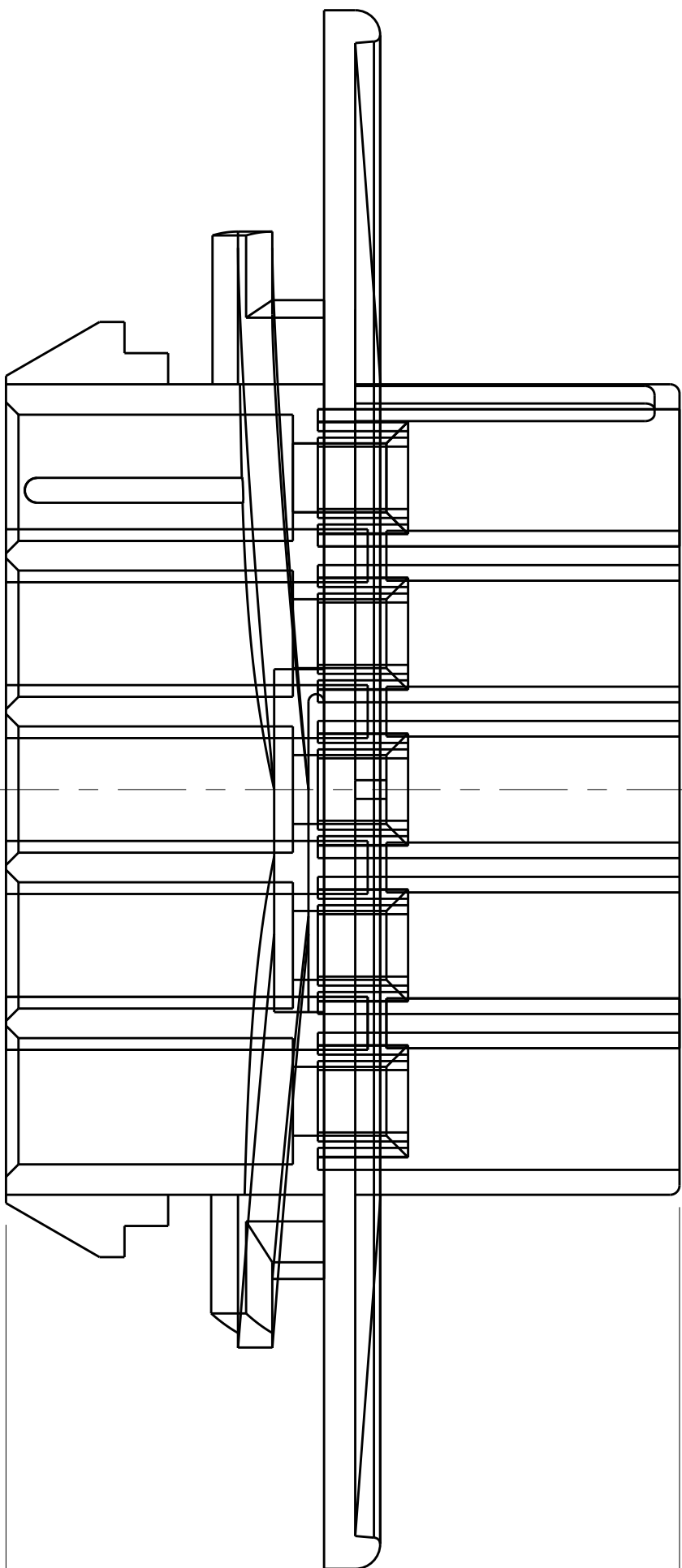
RECOMMENDED CUT OUT
SCALE 2:1

1. MATES WITH APPROPRIATE UNIVERSAL MATE-N-LOK™ PLUG.
2. RECOMMENDED PANEL THICKNESS 0.76 - 2.29 [1.030 - 1.090].
3. PANEL MUST BE PUNCHED SO THAT THE HOUSING ENTERS THE PANEL IN THE SAME DIRECTION AS THE PUNCH.
4. DIMENSIONS SHOWN REPRESENT PRODUCT IN DRY, AS MOLDED CONDITION ADDITIONAL 2% GROWTH DUE TO SUBSEQUENT MOISTURE ABSORPTION MAY OCCUR AND SHOULD BE ACCOUNTED FOR.

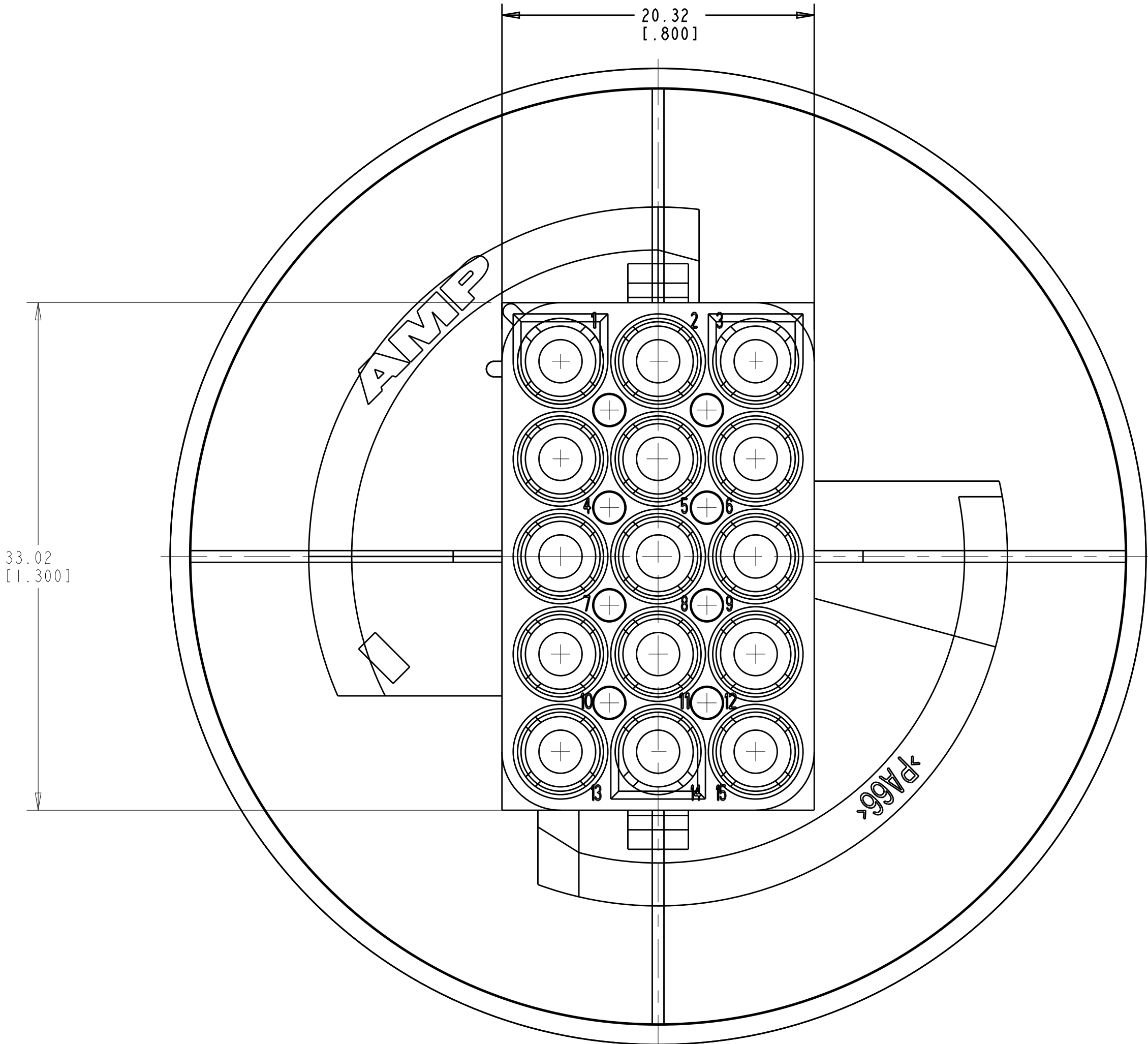


Ø63.5
[2.500]

R22.73
[1.895]
2 PLC



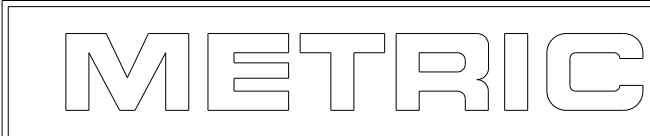
27.43
[1.080]



33.02
[1.300]

20.32
[1.800]

PRELIMINARY
NOT RELEASED FOR PRODUCTION



1ST FORMERLY IT IS CONSIDERED TO BE THE PROPERTY OF TYCO ELECTRONICS CORPORATION. IT IS SUBJECT TO CHANGE WITHOUT NOTICE AND THE USER SHALL BE RESPONSIBLE FOR THE LATEST EDITION.				DWN	28-JUNE-2000	AMP Incorporated Harrisburg, PA 17105-3608	
DIMENSIONS: mm[INCHES]				CHK	28-JUNE-2000	NAME CAP. 15 CIRCUIT, UNIVERSAL MATE-N-LOK(TM), SPECIAL	
TOLERANCES UNLESS OTHERWISE SPECIFIED:				APVD	28-JUNE-2000		
0 PLC ±				PRODUCT SPEC		SIZE A	
1 PLC ±				APPLICATION SPEC			
2 PLC ±0.13[.005]				WEIGHT		SCALE 4:1	
3 PLC ±				CUSTOMER DRAWING			
4 PLC ±				SHEET 1 OF 1		REV 3	
ANGLES ±0° 30'							
FINISH							
MATERIAL NYLON UL 94V-2, NATURAL							