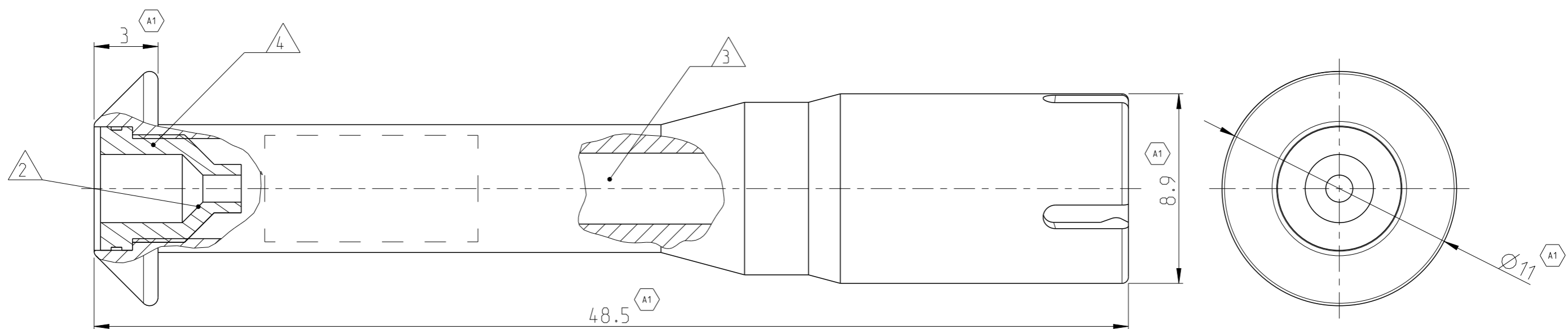


LOC	DIST	REVISIONS			
P	LTR	DESCRIPTION	DATE	DWN	APVD
FM	-				
	A	New drawing	29JUN2012	GB	SzG
	A1	Drawing update, ECR-15-002210	11FEB2015	GB	SzG
	A2	ERC-16-009474	21JUL2016	LSz	GB



Bemerkungen / Notes:

1. Teile in Lupolenbeutel luftdicht verpackt (500/1000 Sctk.)
 Parts must be airtight packaged in bags of lupolen (500/1000 pieces)

^{A1} 2 Geschmiert mit Gleitmittel Hellerine (Fa. Hellermanntyton) direkt vor dem Einsetzen des Kontaktes
 Lubricated with Hellerine 625 (Hellermanntyton) right before contact insertion

^{A1} 3 Kammer für Stiftkontakt CIC. C1-2 od. Type III
 Cavity for pin contact CIC. C1-2 or Type III

^{A1} 4 Dichtungstülle für Litzenleitung mit Isolationsdurchmesser von 2.3-3.0mm
 Seal for wire with isolation diameter 2.3 - 3.0 mm ¹⁰

Dichtungstülle für Litzenleitung mit Isolationsdurchmesser von 1.3-2.3 mm
 Seal for wire with isolation diameter 1.3 - 2.3 mm ¹¹

-2 wie gezeichnet AS SHOWN

^{A2} **OBSOLETE**

TEC PART NO.	TEC NO	QU	DESCRIPTION	MATERIAL	COLOUR
826881-2	826764-1	1	SEAL ^{A10}	NEOPRENE	GREY
	926161-5	1	1POS. PIN-HOUSING	PA6.6 GV13	BLACK
826881-3	826764-3	1	SEAL ^{A11}	NEOPRENE	BLACK
	926161-5	1	1POS. PIN-HOUSING	PA6.6 GV13	BLACK

REVISION OF EACH ASSY NO (WHEN BLANK USE DWG REVISION)

THIS DRAWING IS A CONTROLLED DOCUMENT.		DWN 25JUN2012 Gergely Benczur			
DIMENSIONS: mm		CHK 27JUN2012 Szilárd Nemes			
TOLERANCES UNLESS OTHERWISE SPECIFIED: ±0.2mm		APVD 29JUN2012 Szabolcs Gáspár		NAME 1 POS.ECONOSEAL SERIE E PIN-HOUSING ASSY	
0 PLC ± 1 PLC ± 2 PLC ± 3 PLC ± 4 PLC ± ANGLES ±1°		PRODUCT SPEC -		APPLICATION SPEC -	
MATERIAL -		FINISH -		WEIGHT -	
		CUSTOMER DRAWING		SIZE A3	CAGE CODE 00779
				DRAWING NO C-826881	RESTRICTED TO -
				SCALE 5:1	SHEET 1 OF 1
				REV A2	