

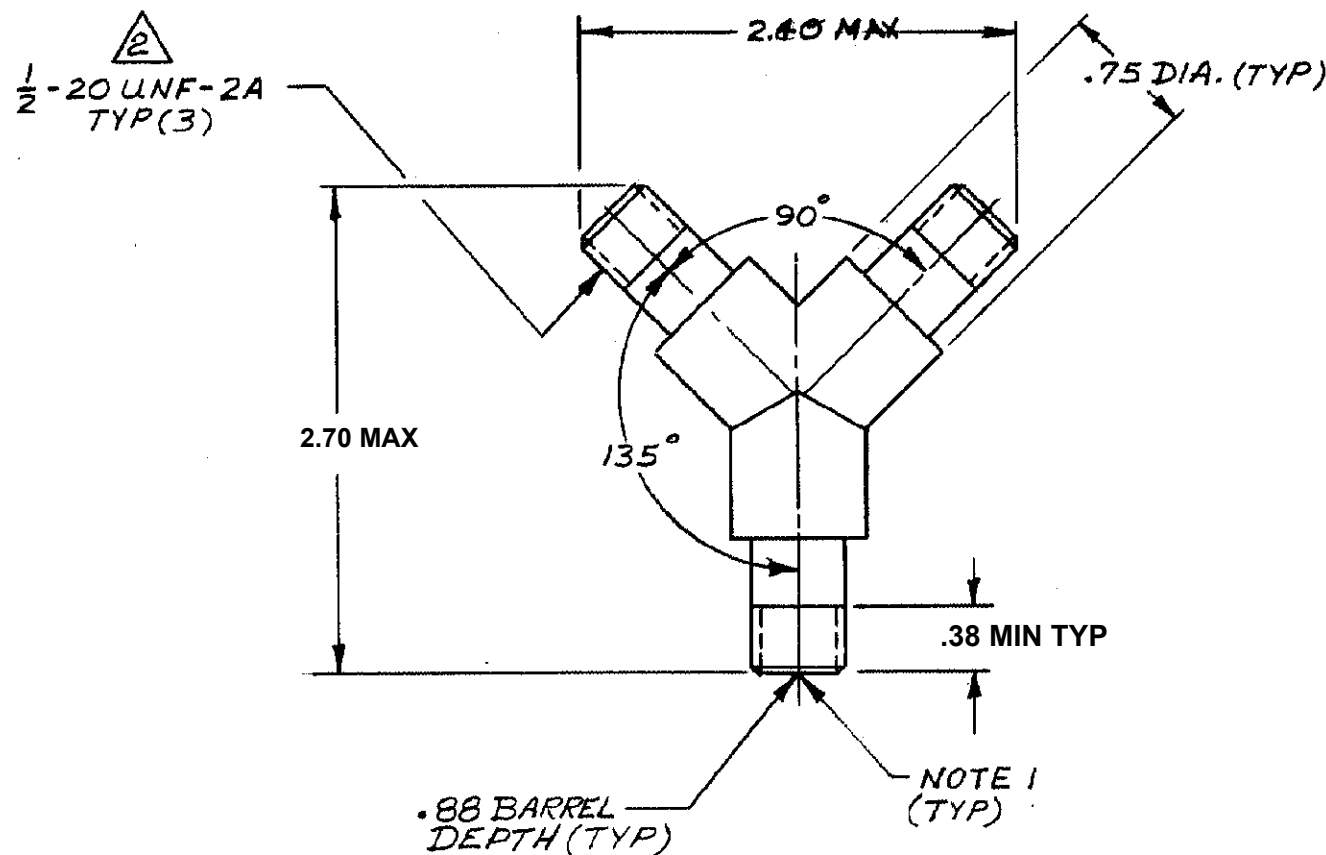
DRAWING MADE IN AMERICAN PROJECTION

©1969 BY AMP INCORPORATED. ALL RIGHTS RESERVED. AMP PRODUCTS COVERED BY PATENTS AND/OR PATENTS PENDING.

THIS PRODUCT DESIGNED AND BUILT BY AMP INCORPORATED. NO LICENSE TO MAKE THIS DESIGN OR MANUFACTURE, OR TO USE ANY TRADE OR PATENT RIGHTS WHICH ARE INVOLVED, IS IMPLIED.

REVISIONS

ZONE	LTR	DESCRIPTION	DATE	APPROVED
A		ADDED MAX. TO 2.75 DIM.	12-23-69	Kew K
B		2.25 WAS 2.50 2.62 WAS 2.75	7-22-70	Kew K.
C		REVISED NOTE 1	10-17-73	LPA
D		UP-DATED ECN 8358	8-9-78	M.D.
E		REV PER ECN 53960	4-13-87	JM
F		OBS-2 ECN DF 0376	3-89	T.W.
G		REV PER DF-3336	7/16/90	Don Eddy
H		REV PER ECO-12-016776	10-12	DE



RECEPTACLE TO MATE WITH AMP LGH-1 LEAD ASSEMBLY. AVAILABLE SEPARATELY.

PER FEDERAL STANDARD H-28 3 WIRE METHOD. DIMENSION OVER WIRES TO BE: .497-.510

OBS	849693-2	AS SHOWN WITH GOLD PLATED PINS
	849693-1	AS SHOWN WITH TIN PLATED PINS

QTY REQD	QTY REQD	ITEM NO.	DWG SIZE	PART OR IDENTIFYING NO.	NOMENCLATURE OR DESCRIPTION	SYMBOL
-2	-1					

PARTS LIST

				UNLESS OTHERWISE SPECIFIED: DIMENSIONS ARE IN INCHES TOLERANCES .00 = ± .04 ANGLES .000 = ± .015	CONTRACT NO. DR <i>L. Leib</i> 5-8-69 CHK	AMP INCORPORATED CAPITRON DIVISION ELIZABETHTOWN, PENNSYLVANIA			
				MATERIAL: GLASS EPOXY MOLDED	APPD <i>Kew K.</i> 5-15-69	NAME "Y" RECEPTACLE			
				FINISH: BLACK	APPD	LGH-1			
NEXT ASSY	FINAL ASSY	NEXT ASSY	USED ON	DSGN APPD	OTHER APPD	SIZE B	CODE IDENT NO. 89110	NUMBER 849693	REV H
QTY REQD				APPLICATION		SCALE 1-1 WT		SHEET 1 OF 1	

PRINT DIST 10/80