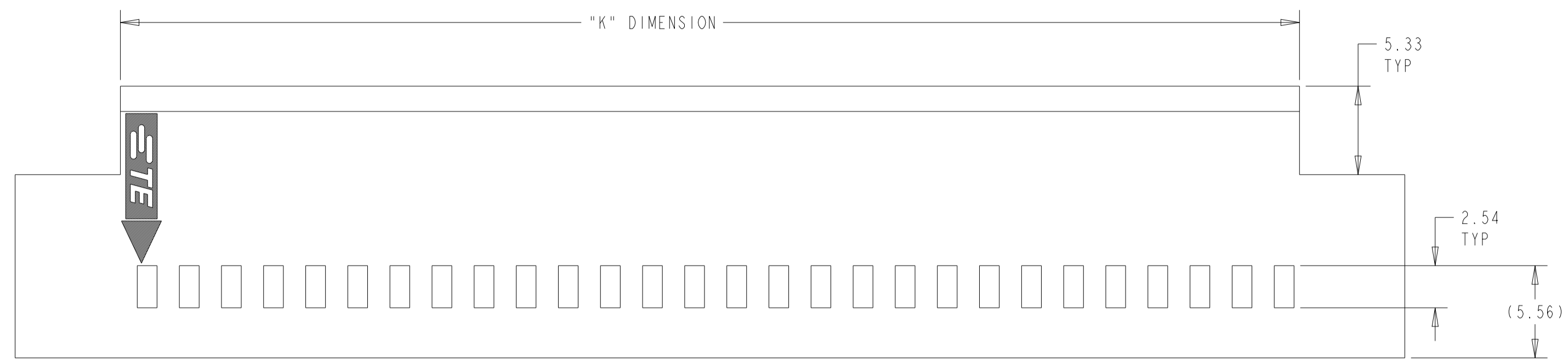
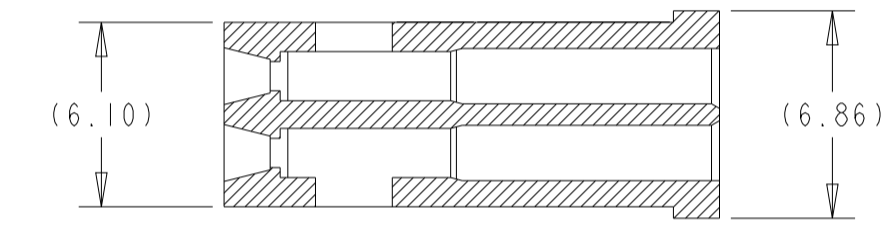
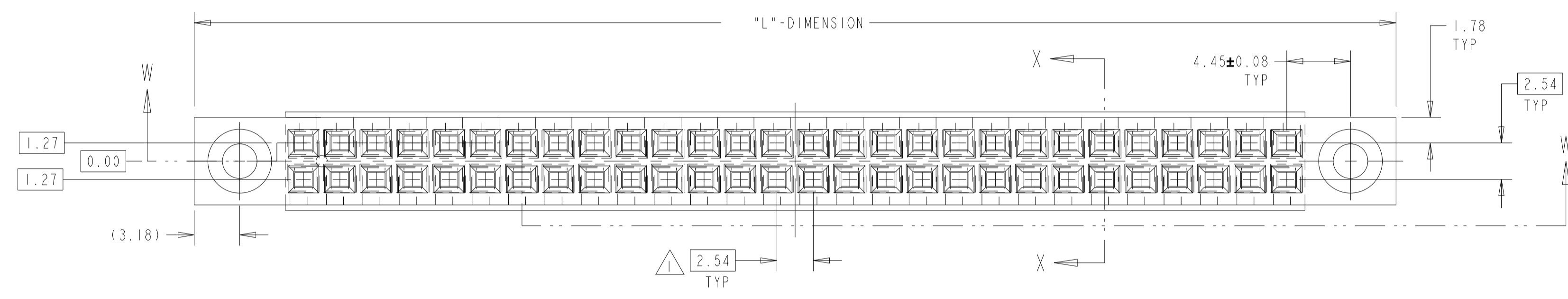


REVISIONS				
P	LTN	DESCRIPTION	DATE	APVD
N1		REVISED PER ECO-10-007651	12APR10	HMR JO
N2		REVISED PER ECO-19-018707	18DEC2019	RS JO
P		REVISED PER ECR-22-1322152	15JUN2022	RK SD
P1		REVISED PER ECN-23-211206	24JUN2023	RK MF

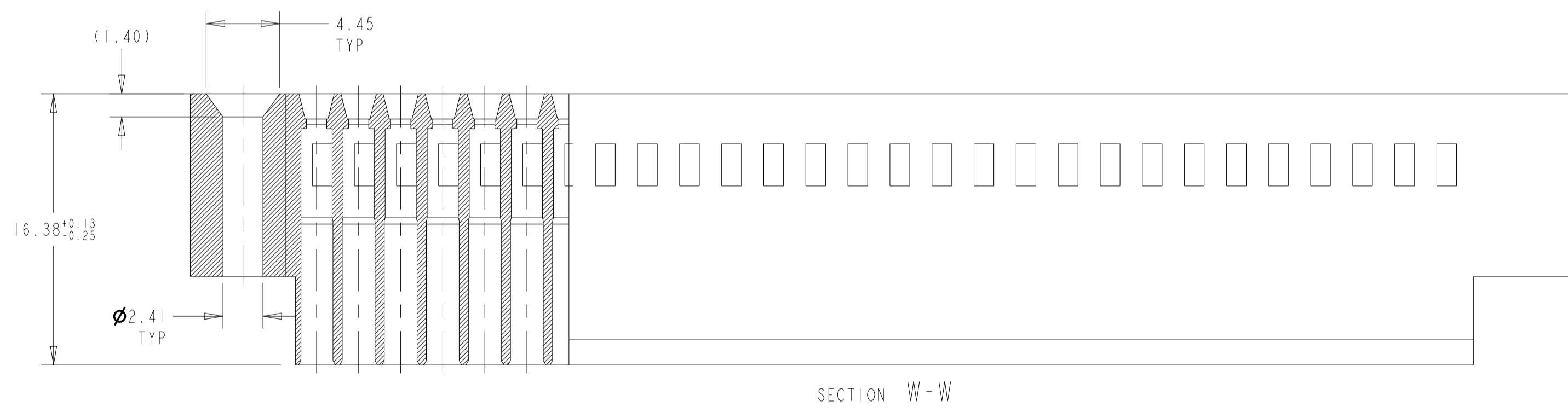


- 1 CAVITY LOCATION DIMENSIONS INCREASE IN INCREMENTS OF 2.54 TOLERANCE NON-CUMULATIVE
- 2 USE EXTRACTION TOOL 91052-1 TO REMOVE RECEPTICAL CONTACTS.
- 3 MATERIAL: GLASS FILLED THERMOPLASTIC, UL 94-V0 RATED, COLOR: BLACK
- 4. THE PRODUCT IS IN PROCESS FOR UL RECOGNITION.
- 5. THE PRODUCT IS IN PROCESS FOR QUALIFICATION, AND IS NOT YET QUALIFIED.

LONGEST POSITION SHOWN



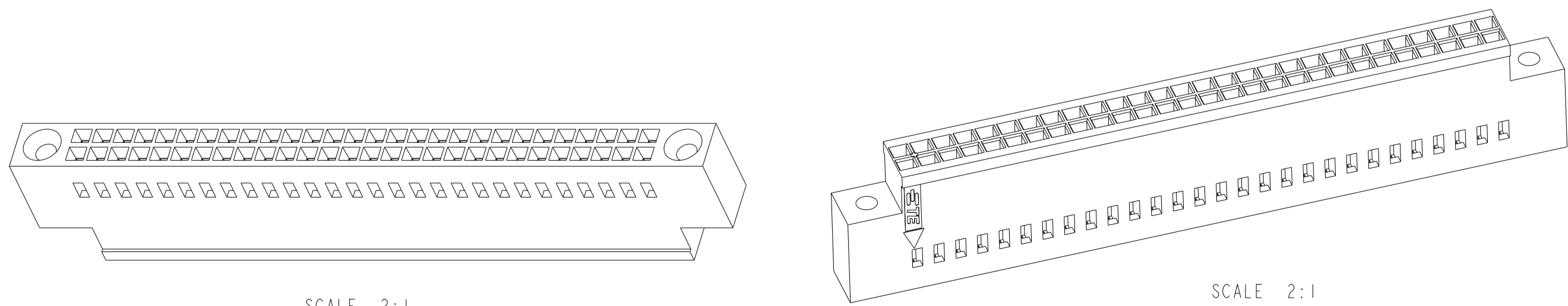
SECTION X-X



SECTION W-W

10.16	22.86	3	8	2-86264-6	
12.70	25.40	4	10	2-86264-5	
15.24	27.94	5	12	2-86264-4	
17.78	30.48	6	14	2-86264-3	
20.32	33.02	7	16	2-86264-2	
22.86	35.56	8	18	2-86264-1	
25.40	38.10	9	20	2-86264-0	
27.94	40.64	10	22	1-86264-9	
30.48	43.18	11	24	1-86264-8	
33.02	45.72	12	26	1-86264-7	
35.56	48.26	13	28	1-86264-6	
38.10	50.80	14	30	1-86264-5	
40.64	53.34	15	32	1-86264-4	
43.18	55.88	16	34	1-86264-3	
45.72	58.42	17	36	1-86264-2	
48.26	60.96	18	38	1-86264-1	
50.80	63.50	19	40	1-86264-0	
53.34	66.04	20	42	86264-9	
55.88	68.58	21	44	86264-8	
58.42	71.12	22	46	86264-7	
60.96	73.66	23	48	86264-6	
63.50	76.20	24	50	86264-5	
66.04	78.74	25	52	86264-4	
68.58	81.28	26	54	86264-3	
71.12	83.82	27	56	86264-2	
	"K" DIM	"L" DIM	NUMBER OF SPACES	NUMBER OF POSITIONS	PART NUMBER

ISOMETRIC VIEW



SCALE 2:1

SCALE 2:1

THIS DRAWING IS A CONTROLLED DOCUMENT.

OWN: BOB BOLES BG 31AUG89
 CH: J. GESEFORD 14SEP89
 APVD: J. GESEFORD 14SEP89

DIMENSIONS: mm
 TOLERANCES UNLESS OTHERWISE SPECIFIED:
 0 PLC ±
 1 PLC ±0.5
 2 PLC ±0.5
 3 PLC ±0.13
 4 PLC ±
 ANGLES FINISH ±0° 30'

MATERIAL: 3

APPLICATOR: J. GESEFORD

APPLICATION SPEC: -

SIZE: A | CAGE CODE: 00779 | DRAWING NO: 86264 | RESTRICTED TO: -

CUSTOMER DRAWING | SCALE: 4:1 | SHEET: 1 OF 1 | REV: P1

TE Connectivity
 MOD IV CRIMP SNAP-IN CONNECTOR, DOUBLE ROW, 2.54 CENTERS