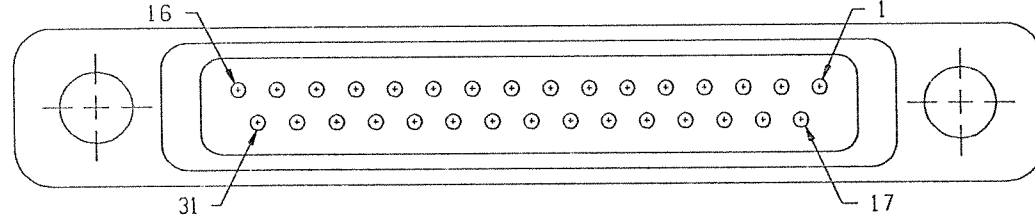
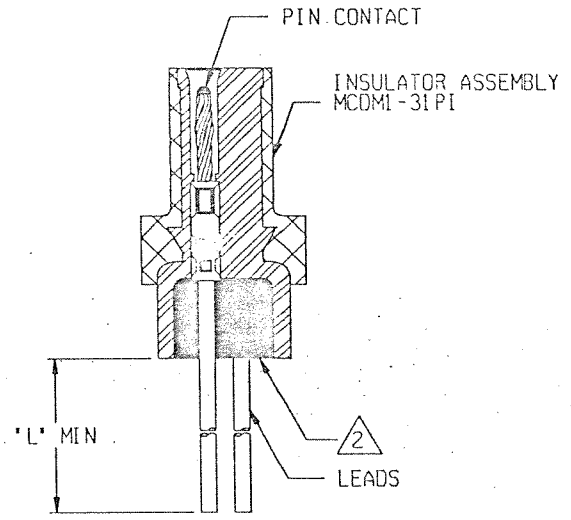
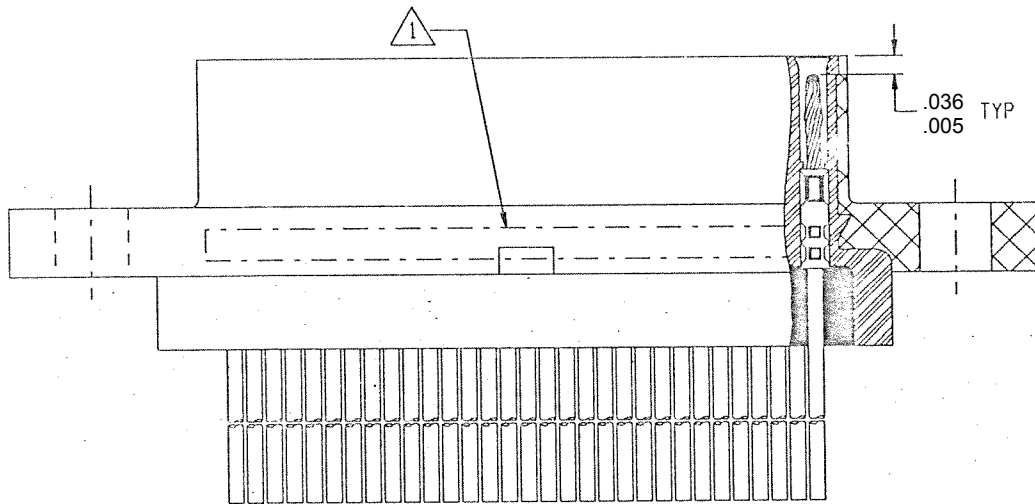
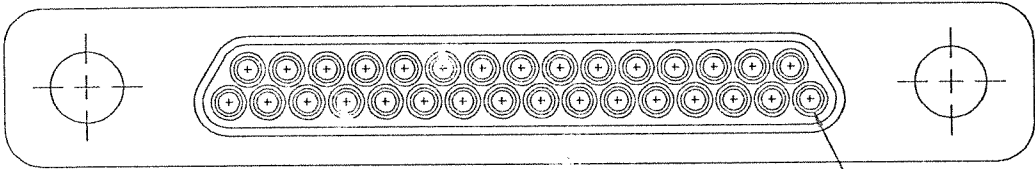



REVISION					
ZONE	LTR	ECN	DESCRIPTION	DATE	APPROVED
	C	39399	GENERAL DWG UPDATE	<i>Handwritten</i>	<i>Handwritten</i>
	D		REV PER ECO 18-020028 CT	1-9-19	AS



NOTES: UNLESS OTHERWISE SPECIFIED

- △ MARK PER TIS.
- △ POTTING COMPOUND USED IS 194-8102-6215/6225.
- 3. CRIMP LEADS INTO CONTACTS PER MEP 302-05.
- 4. EPOXY WICKING FROM THE REAR OF INSULATOR ON INSULATED LEADS MUST NOT EXCEED .125 MAX ON #25 AWG AND SMALLER LEADS AND .200 MAX ON #24 AWG AND LARGER LEADS.

UNLESS OTHERWISE SPECIFIED DIMENSIONS ARE IN INCHES. TOLERANCE ARE: FRACTIONS DECIMALS ANGLES ± 1/8 .XX ± .01 ± 2° .XXX ± .005	APPROVALS		 MICRODOT CONNECTORS A DIVISION OF UNI-STAR INDUSTRIES INC. 306 PASADENA AVE., SO. PASADENA, CA 91108	PROD CODE: 842 CODE: M
	SIGNATURE	DATE		
MATERIAL:	DRAWN BY MEL F. CAMPOS	09/16/99	METAL SHELL 'D' CONNECTOR MCDMI-B-31P	SIZE: A CODE IDENT NO. 98278 DRAWING NO. 9-1532142-5 SCALE: NONE SHEET 1 OF 1
	P.E.	<i>Handwritten</i>		
	K.E.			
FINISH:	THIS DOCUMENT IS THE PROPERTY OF MICRODOT CONNECTORS, A DIVISION OF UNI-STAR INDUSTRIES INC. USE OF THIS DOCUMENT OR ANY PART THEREOF IS EXPRESSLY FORBIDDEN WITHOUT THE EXPRESS WRITTEN PERMISSION OF MICRODOT CONNECTORS, A DIVISION OF UNI-STAR INDUSTRIES INC.			