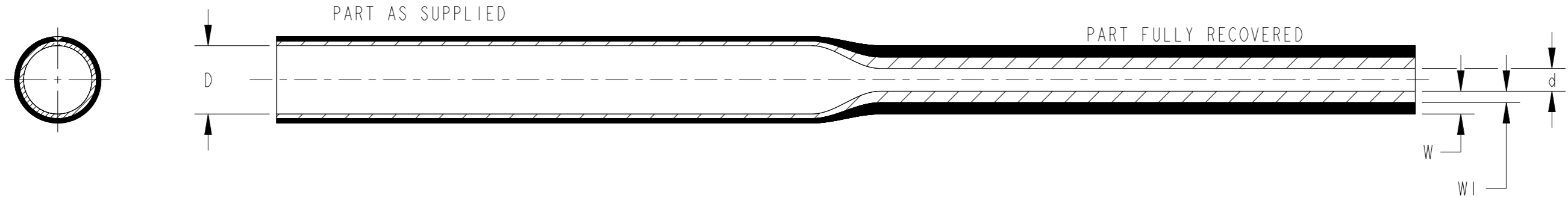


P	LTR	DESCRIPTION	DATE	DWN	APVD
	A	INITIAL REVISION	21SEP2021	HD	-
	A1	REDRAWN PER ECR-22-157063	07DEC2022	KW	MB

# ATUM (3:1 RATIO)

DUAL WALL TUBE WITH A 3:1 SHRINK RATIO. A HALOGENATED FLAME RETARDED HEAT SHRINK TUBE WITH A MELTABLE ADHESIVE LINER DELIVERING A HIGH BOND STRENGTH TO MANY SUBSTRATES. TO BE USED FOR INSULATION, PROTECTION, AND ENVIRONMENTAL SEALING OF CABLES.



## PRODUCT DIMENSIONS

SIZE	INSIDE DIAMETER AS SUPPLIED (MIN) D		INSIDE DIAMETER AFTER RECOVERY (MAX) d		TOTAL WALL THICKNESS AFTER RECOVERY (NOM) W		WALL THICKNESS TOLERANCE AFTER RECOVERY		INNER MELTABLE WALL THICKNESS AFTER RECOVERY (NOM) WI	
	mm.	in.	mm.	in.	mm.	in.	mm.	in.	mm.	in.
3/1	3.00	.118	1.00	.039	1.00	.039	0.30	.012	0.50	.020
4.5/1.5	4.50	.177	1.50	.059	1.00	.039	0.30	.012	0.50	.020
6/2	6.00	.236	2.00	.079	1.00	.039	0.30	.012	0.50	.020
9/3	9.00	.354	3.00	.118	1.40	.055	0.30	.012	0.60	.024
12/4	12.00	.472	4.00	.157	1.78	.070	0.38	.015	0.75	.030
19/6	19.00	.748	6.00	.236	2.25	.089	0.55	.022	0.80	.031
24/8	24.00	.945	8.00	.315	2.54	.100	0.55	.022	1.00	.039
40/13	40.00	1.575	13.00	.512	2.54	.100	0.55	.022	1.00	.039

## ATUM (3:1 RATIO)

### PRODUCT INFORMATION

SHRINK RATIO - 3:1  
 LONGITUDINAL SHRINKAGE ON FULL RECOVERY 0 TO-15%  
 STANDARD COLOUR: BLACK  
 MATERIAL CONFORMS TO TE SPECIFICATION  
 TEC-108-120009

NON-STANDARD COLOURS: CLEAR, OTHER COLOURS ON REQUEST

FLAME RETARDANT BLACK AND COLOURS  
 NON-FLAME RETARDANT CLEAR ONLY

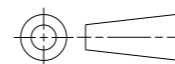
TUBING CUT TO SPECIFIC LENGTHS CAN BE SUPPLIED FROM THE PRODUCT SIZES REFERENCED WITHIN THIS DRAWING.

### STANDARD CUTTING TOLERANCES (mm)

CUT LENGTH	TOLERANCE
UPTO TO 9.90mm	±1.50mm
10mm TO 24.90mm	±1.50mm
25mm TO 54.90mm	±1.50mm
55mm TO 99.90mm	±3.00mm
100mm TO 149.90mm	±4.00mm
150mm TO 499.90mm	±5.00mm
500mm AND GREATER	±25.40mm

THIS DRAWING IS A CONTROLLED DOCUMENT.

DIMENSIONS:  
mm (Inches)



MATERIAL  
SEE NOTE

TOLERANCES UNLESS OTHERWISE SPECIFIED:

- 0 PLC ±-
- 1 PLC ±0.1
- 2 PLC ±0.01
- 3 PLC ±0.001
- 4 PLC ±0.0001
- ANGLES ±-
- FINISH -

DWN 07DEC2022  
BASAVARAJA D A

CHK 07DEC2022  
SELVAPANDIAN B

APVD 07DEC2022  
MAYO BAKARE

PRODUCT SPEC  
108-120009

APPLICATION SPEC

WEIGHT -

CUSTOMER DRAWING



NAME  
ATUM (3:1 RATIO)-IRRADIATED MODIFIED POLYOLEFIN DUAL WALL HEAT SHRINK TUBING

SIZE A3 CAGE CODE - DRAWING NO. C-ATUM\_3\_TO\_1\_RATIO\_STANDARD\_SIZES RESTRICTED TO -

SCALE NTS SHEET 1 OF 1 REV A1