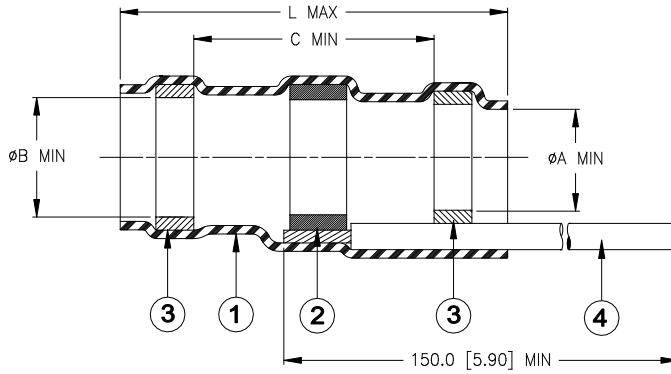


# CUSTOMER DRAWING



Product Name	Product Dimensions				Prepared Cable Dimensions			
	Ø A min	Ø B min	C min	L max	Ø D max	Ø E min	Ø G max	J
B-152-05-W418-9	4.30 [0.170]	4.80 [0.189]	9.50 [0.374]	30.00 [1.181]	4.80 [0.189]	2.00 [0.079]	4.30 [0.170]	8.0 ±0.5 [0.315±0.020]
B-152-07-W418-9	6.80 [0.268]	7.30 [0.287]	11.50 [0.453]	33.00 [1.300]	7.30 [0.287]	3.30 [0.130]	6.80 [0.268]	11.0 ±1.0 [0.433±0.040]
B-152-11-W418-9	10.80 [0.425]	11.50 [0.453]	13.50 [0.531]	36.00 [1.417]	9.50 [0.374]	4.50 [0.177]	9.00 [0.354]	12.0 ±1.0 [0.472±0.040]
B-152-13-W418-9	13.00 [0.512]	15.10 [0.594]	24.00 [0.945]	46.00 [1.811]	14.00 [0.551]	7.00 [0.276]	12.00 [0.472]	17.0 ±1.0 [0.670±0.040]
B-152-17-W418-9	17.00 [0.670]	19.00 [0.748]	24.00 [0.945]	56.00 [2.204]	17.00 [0.670]	9.00 [0.354]	14.00 [0.551]	31.0 ±2.0 [1.220±0.079]

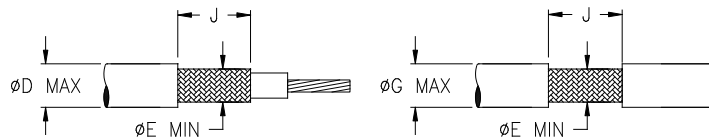
## MATERIALS


- INSULATION SLEEVE: Transparent heat-shrinkable radiation cross-linked modified polyolefin.
- SOLDER PREFORM WITH FLUX:  
SOLDER: TYPE Bi14 per ANSI/J-STD-006.  
FLUX: TYPE ROM1 per ANSI/J-STD-004.
- MELTABLE SEALING RINGS: Thermally stabilized thermoplastic. Color: blue.
- GROUND LEAD: TE Connectivity/Raychem Zerohal 1.00mm<sup>2</sup> (AWG18) wire. Stranded tin-plated copper. Color: white.

## APPLICATION

- These controlled soldering devices are designed for termination of a bare or tin plated copper screen on a cable having an insulation rated for at least +85°C, meeting the dimensional criteria listed in the table above.
- Temperature range: -55°C to +125°C.
- When installed properly, it will meet the requirements of TE Connectivity/Raychem Specification RT-1404.
- For installation procedure and application equipment consult TE Connectivity/Raychem document RCPS-B152.  
A minimum bend radius of 1 wire diameter of lead wire is recommended.

For best results, prepare the cable as shown:



		<b>Raychem DEVICES</b>	TITLE: <b>SOLDERSLEEVE* SHIELD TERMINATOR WITH PRE-INSTALLED LEAD</b>		
Unless otherwise specified dimensions are in millimeters. [Inches dimensions are shown in brackets]			DOCUMENT NO.: <b>B-152-XX-W418-9</b>		
TOLERANCES: 0.00 N/A 0.0 N/A 0 N/A	ANGLES: N/A ROUGHNESS IN MICRON	TE Connectivity reserves the right to amend this drawing at any time. Users should evaluate the suitability of the product for their application.	REV : <b>2</b>	DATE : <b>16-Apr-2020</b>	
PREPARED BY: <b>M. FORONDA</b>	CAGE CODE: <b>06090</b>	ECO: <b>ECO-20-005255</b>	SCALE: <b>NTS</b>	SIZE: <b>A</b>	SHEET: <b>1 of 1</b>