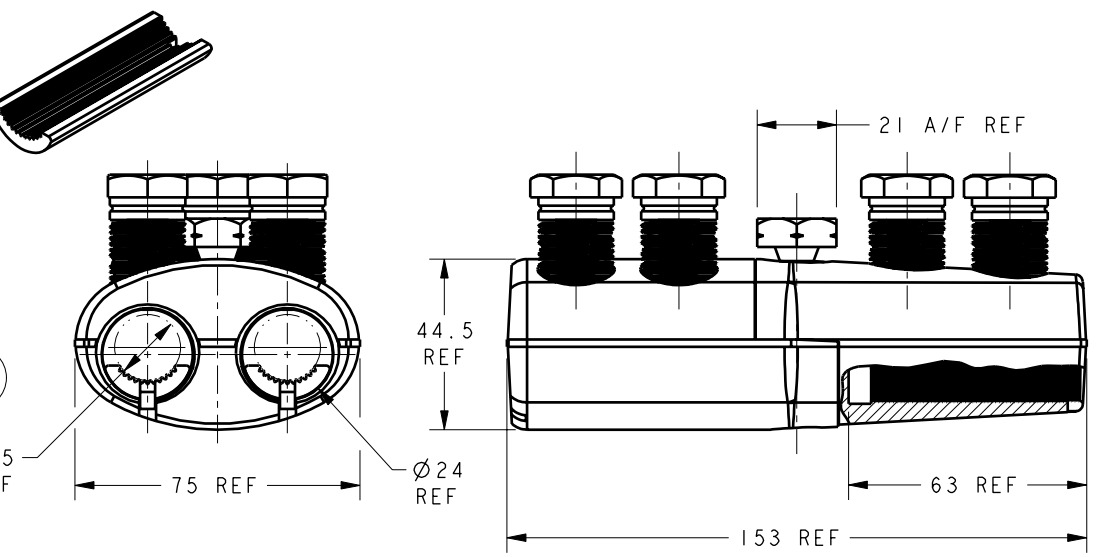


ITEM	PART/DRG NO	QTY	DESCRIPTION
1	01-303-0038	1	MV ALUMINIUM BRANCH CONNECTOR BODY - VEE TYPE WITH Ø24.0 BORES THREADED HALF
2	01-303-0039	1	MV ALUMINIUM BRANCH CONNECTOR BODY - VEE TYPE WITH Ø24.0 BORES COUNTERBORED HALF
3	01-701-0022	6	M20x1.5 21 A/F 35.75 LONG BRASS MULTI-SHEAR BOLT
4	01-702-0034	1	M14x1.5 21 A/F 54.5 LONG BRASS MID-BOLT
5	01-707-0041	3	ALUMINIUM REDUCING INSERT - Ø24.0 O/D x Ø17.5 I/D x 60.0 LONG WITH ORIENTATION LUG (UN-PLATED)



NOTES :
 1. REDUCING INSERTS ARE TO BE FITTED TO BORES.

B	REDUCING INSERT STOP BAH-017070035 (x3) REMOVED	BH-00536	21/11/08
A	FIRST ISSUE	BH-00506	04/09/08
Revision	Description	Name/DMR	Date
Design/Drawn	M DEAR	Date	04-Sept-08
		Scale (UOS)	1:2
PCN/RPN No	CN2478-000	Checked/Approved by	
Drawing/Part No	BAH-023030043	Drawing Type	ASSEMBLY/CUSTOMER
		THIRD ANGLE PROJECTION	Rev B

Tyco Electronics
 Tyco Electronics UK Ltd, Freebournes Road,
 Witham, Essex, CM8 3AH, UK.
 Tel: +44 870 870 7500 Fax: +44 870 240 5289

Material	VARIES	Part Description MV ALUMINIUM BRANCH CONNECTOR - VEE TYPE WITH Ø24.0 BORES FOR TRANSITION JOINTS c/w REDUCING INSERTS
Finish	VARIES	
Tolerances (UOS)	-	
B&H Short Desc.	HVBR595/300-UTB/RI	

REMOVE ALL BURRS AND SHARP EDGES - SURFACES TO BE FREE FROM SCRATCHES AND DEFECTS - ALL THREADS TO BS3643 PT 2

© 2008 TYCO ELECTRONICS UK LTD, WITHAM, UK