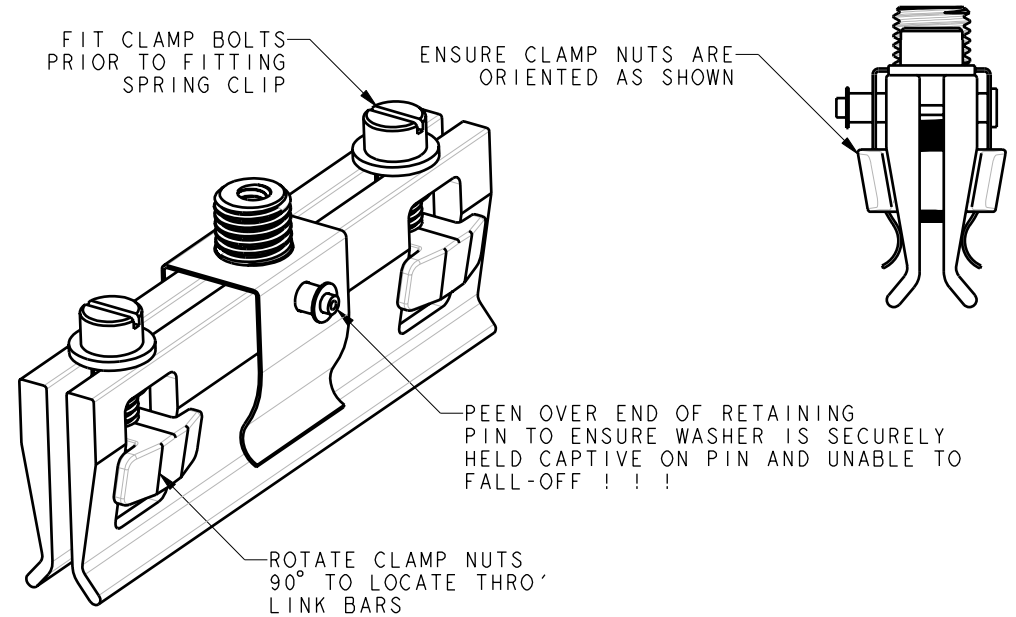


ITEM	PART/DRG NO	QTY	DESCRIPTION
1	01-706-0027	1	M3 BRASS WASHER
2	01-803-0074	2	82.5mm WEDGE LINK - LINK BAR
3	01-803-0075	2	82.5mm WEDGE LINK - CLAMP NUT
4	01-803-0076	2	82.5mm WEDGE LINK - BRASS CLAMP BOLT
5	01-803-0077	1	82.5mm WEDGE LINK - TOOL LOCATING BOSS
6	01-803-0078	1	82.5mm WEDGE LINK - RETAINING PIN
7	01-803-0079-	1	82.5mm WEDGE LINK - SPRING CLIP



D	WASHER 01-706-0027 (x1) ADDED, RETAINING PIN VISUALLY UPDATED FOR END PEENING, PEENING NOTE FOR WASHER REVISED	BH-00491	15/07/08
C	ITEM 01-706-0027 WASHER REMOVED	ML	5.5.04
B	DETAILED VIEW ADDED	S.P.W	26.1.04
A	FIRST ISSUE	S.P.W	27.8.03
Revision	Description	Name/DMR	Date
Design/Drawn	S.P.WEST	Date	18-Sep-02
		Scale (UOS)	4:5
PCN/RPN No	D32350-000	Checked/Approved by	
Drawing/Part No	02-803-0080	Drawing Type	ASSEMBLY/CUSTOMER
		THIRD ANGLE PROJECTION	A4
			Rev D

Tyco Electronics

Tyco Electronics UK Ltd, Freebournes Road,
Witham, Essex, CM8 3AH, UK
Tel: +44 870 870 7500 Fax: +44 870 240 5289

Material	VARIABLES
Finish	VARIABLES
Tolerances (UOS)	-
B&H Short Desc.	WL82.5

Part Description	- IF IN DOUBT ASK - DO NOT SCALE -
	82.5mm WEDGE LINK

REMOVE ALL BURRS AND SHARP EDGES - SURFACES TO BE FREE FROM SCRATCHES AND DEFECTS - ALL THREADS TO BS3643 PT 2

© 2008 TYCO ELECTRONICS UK LTD, WITHAM, UK