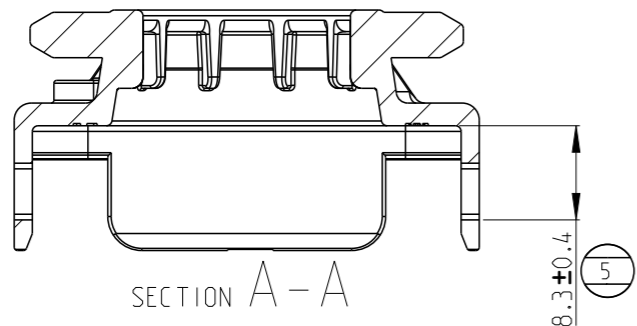
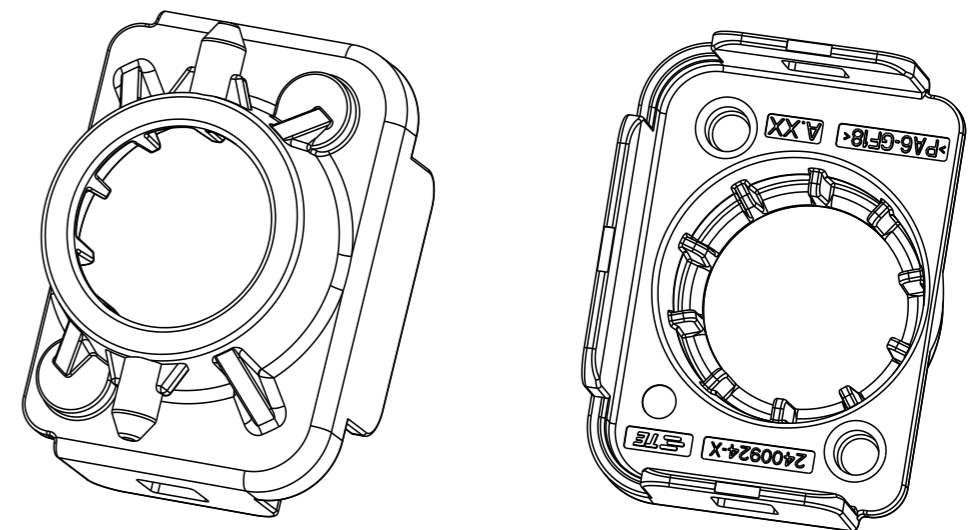
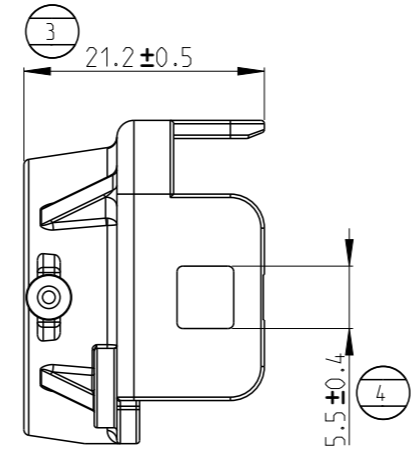
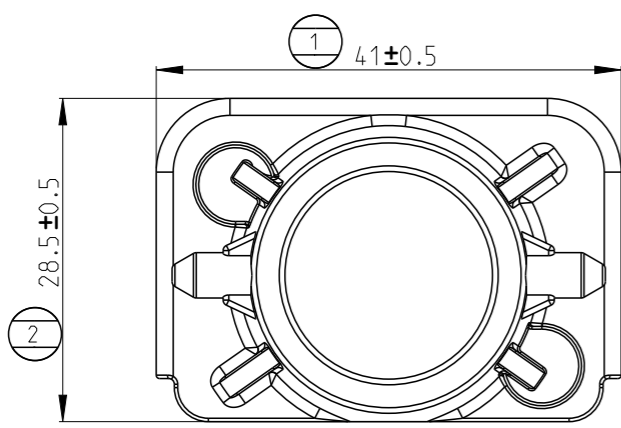
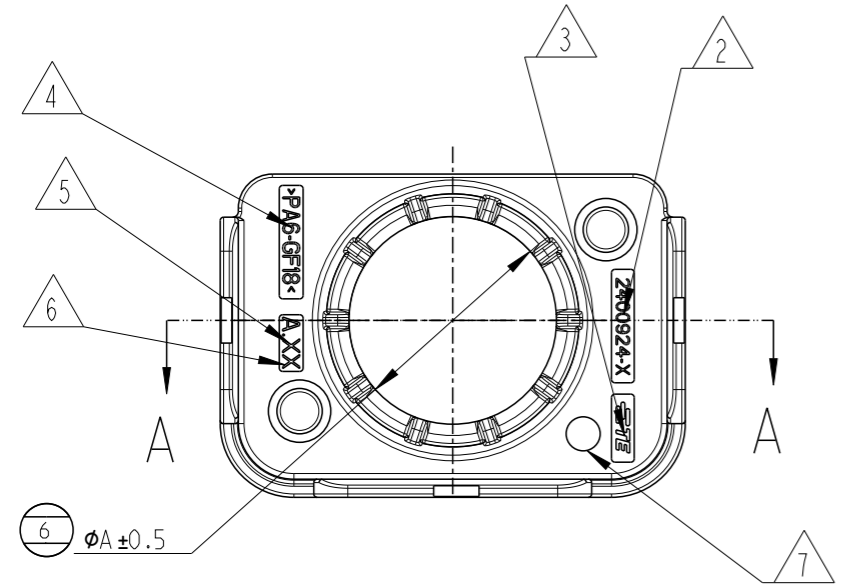


P	LTR	DESCRIPTION	DATE	DWN	APVD
A		INITIAL RELEASED	25SEP2022	E.Z	E.J
A1		ECN-23-197457	08FEB2023	E.Z	E.J



- 1. MATERIAL : SEE TABLE
- 2. TE PART NUMBER MARKING
- 3. TE LOGO MARKING
- 4. MATERIAL MARKING
- 5. CAVITY MARKING
- 6. PART REVISION MARKING
- 7. MANUFACTURE DATE MARKING
- 8. PART MUST BE FREE OF EXCESSIVE FLASH, MIS-MATCH, SINK MARKS, OR OTHER VISUAL IMPERFECTIONS THAT MAY AFFECT PRODUCT FIT FORM OR FUNCTION



2400924-4	25mm ² CABLE SEAL COVER	PA6 V0	12.3	11.6...12.2	5.32	ORANGE
2400924-3	70mm ² CABLE SEAL COVER	PA6 V0	18.3	17.4...18.2	5.17	ORANGE
2400924-2	50mm ² CABLE SEAL COVER	PA6 V0	15.9	15.2...15.8	5.22	ORANGE
2400924-1	35mm ² CABLE SEAL COVER	PA6 V0	14.5	13.8...14.4	5.28	ORANGE
TE PART NO.	DESCRIPTION	MATERIAL	DIM. A [mm]	FOR CABLE DIAM.[mm]	WEIGHT [g]	COLOUR

THIS DRAWING IS A CONTROLLED DOCUMENT.		DWN E.ZHANG 31MAR2022	TE Connectivity			
DIMENSIONS: mm		CHK F.MA 31MAR2022				
TOLERANCES UNLESS OTHERWISE SPECIFIED:		APVD F.JIANG 31MAR2022	NAME CSJ1800 90DEG PLUG CABLE SEAL COVER			
0 PLC ± 1 PLC ±0.1 2 PLC ±0.01 3 PLC ±0.001 4 PLC ±0.0001 ANGLES ±		PRODUCT SPEC 108-160495	APPLICATION SPEC 114-160273			
MATERIAL		WEIGHT	SIZE A3	CAGE CODE 00779	DRAWING NO C-2400924	RESTRICTED TO
FINISH		CUSTOMER DRAWING	SCALE 2:1		SHEET 1 OF 1	REV A1