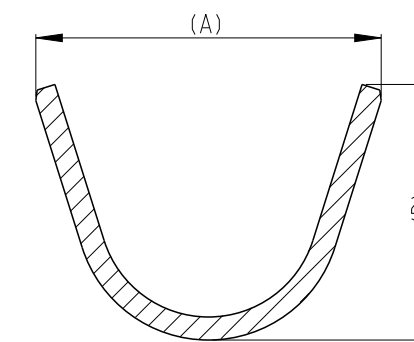
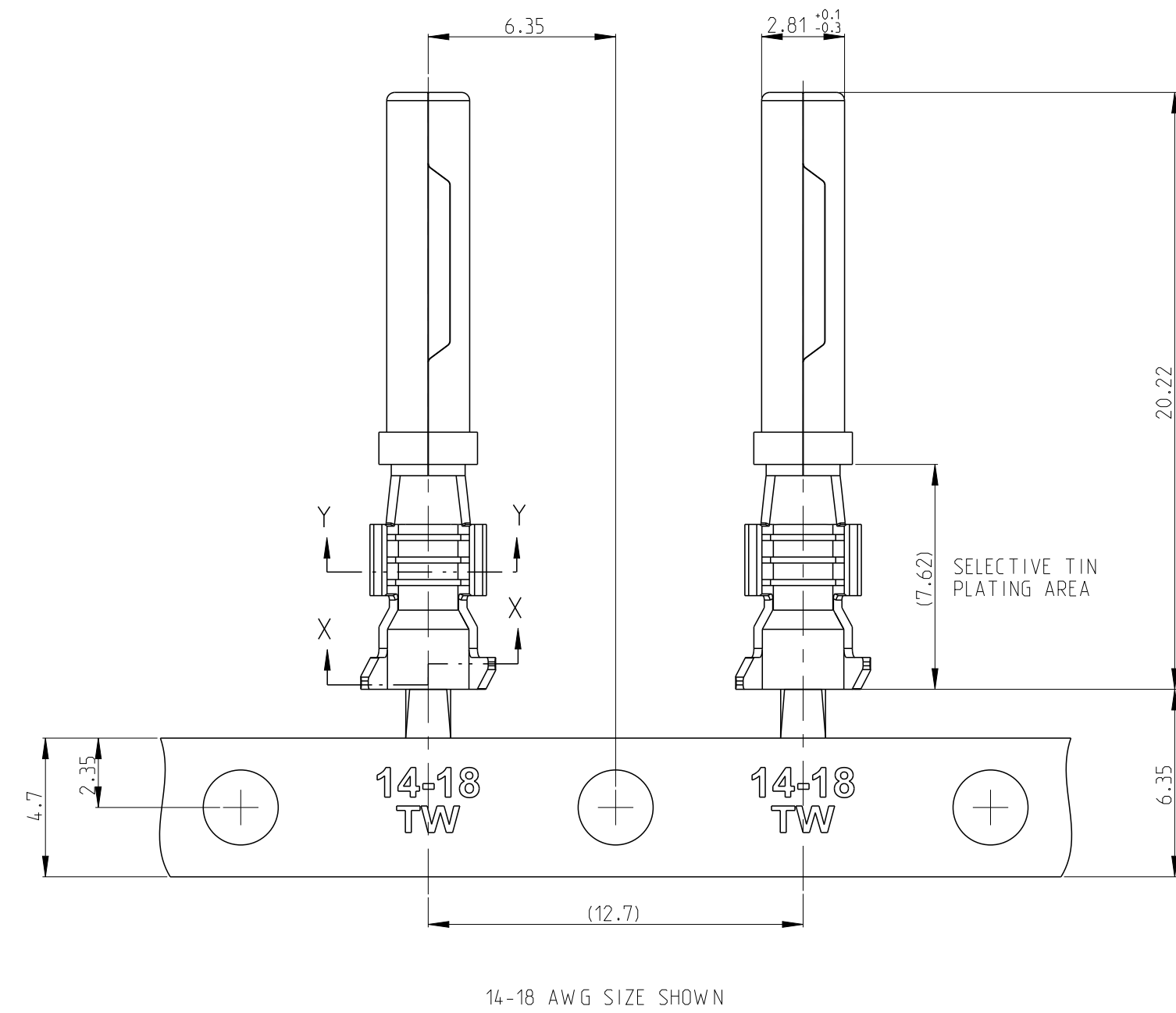
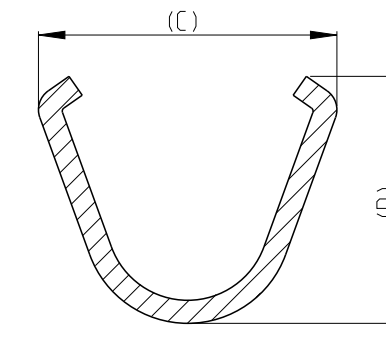


P	LTR	DESCRIPTION	DATE	DWN	APVD
	A	INITIAL RELEASE	23AUG2023	R.C	Z.Z

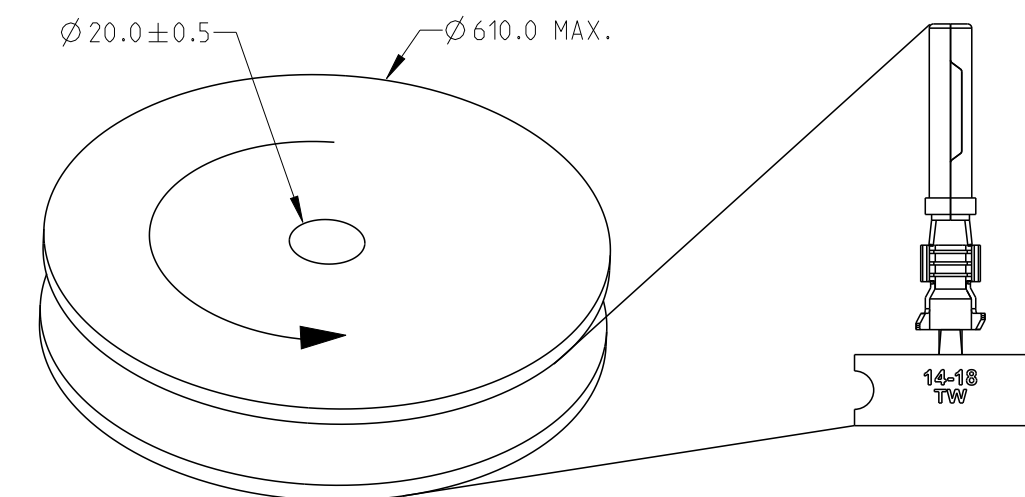
- 1 MATERIAL: COPPER ALLOY 0.300 THICKNESS.
- 2 FINISH: SELECTIVE TIN 0.5µm MINIMUM, OVER NICKEL 1.00µm MINIMUM OVERALL.
- 3. STRIP PARTS ARE REELED 3000 PARTS PER REEL.




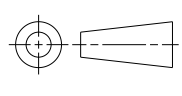
SECTION X-X
SCALE 10:1
INSULATION CRIMP



SECTION Y-Y
SCALE 10:1
CONDUCTOR CRIMP



INSULATION RANGE	WIRE RANGE	STAMP NO.	D	C	B	A	FINISH	MATERIAL	ALIAS P/N	PART NUMBER	
1.40mm-2.54mm	0.5-1.0 mm ²	0.5-1.0	2.90	3.71	2.92	3.40	NICKEL	1	COPPER ALLOY	845250053	4-2600021-3
1.90mm-3.30mm	14-18 AWG	14-18 TW	3.27	3.95	3.38	4.57	NICKEL	2	COPPER ALLOY	845250017	2-2600021-3
			WIRE CRIMP		INSULATION CRIMP						

THIS DRAWING IS A CONTROLLED DOCUMENT.		DWN R.CHEN 23AUG2023	 TE Connectivity	
DIMENSIONS: mm		CHK C.WAN 23AUG2023		
TOLERANCES UNLESS OTHERWISE SPECIFIED: ±0.20		APVD Z.ZHOU 23AUG2023	NAME STAMPED CONTACT SOCKET SIZE 16	
 0-PLC ± 1-PLC ± 2-PLC ± 3-PLC ± 4-PLC ± ANGLES ±2.0° FINISH		PRODUCT SPEC 108-160783	RESTRICTED TO	
MATERIAL		APPLICATION SPEC 114-160698	SIZE A2	CAGE CODE 00779
		WEIGHT	DRAWING NO C-2500062	
		CUSTOMER DRAWING	SCALE 5:1	SHEET 1 OF 1
			REV A	