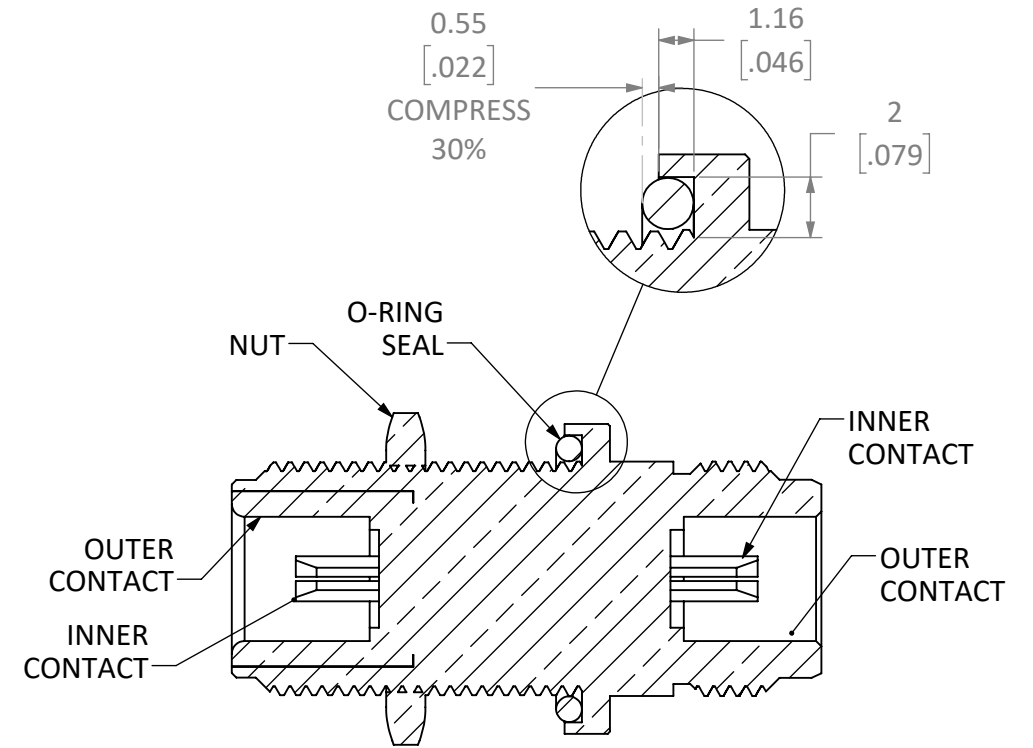
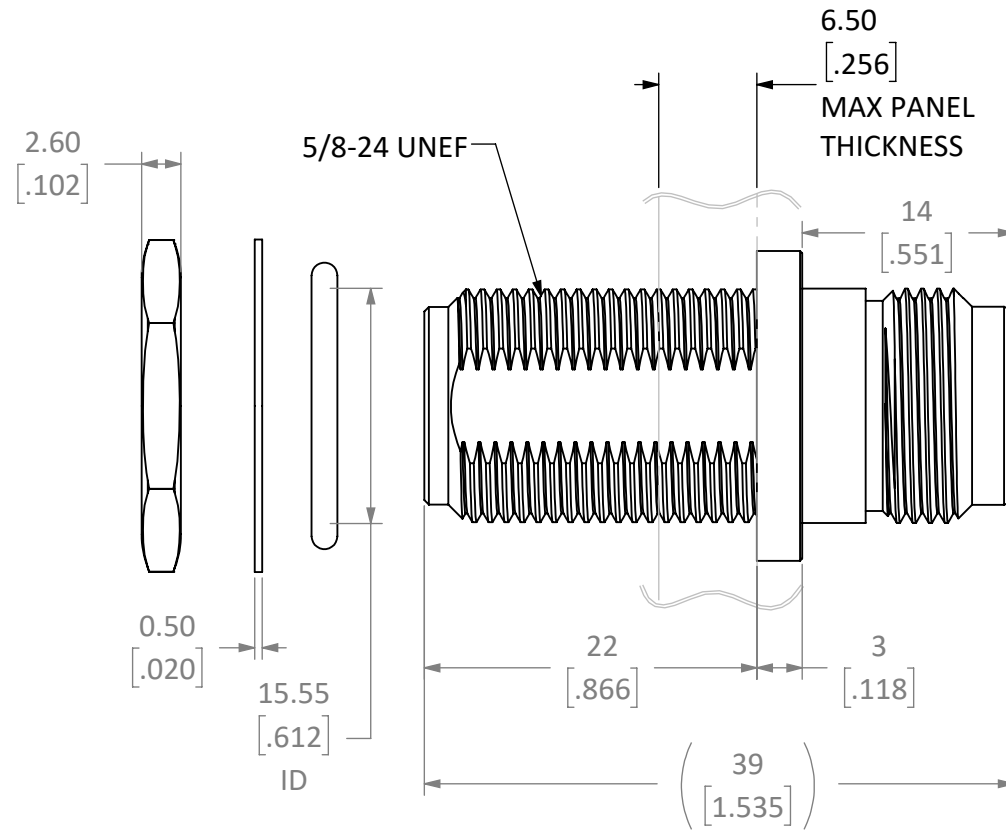
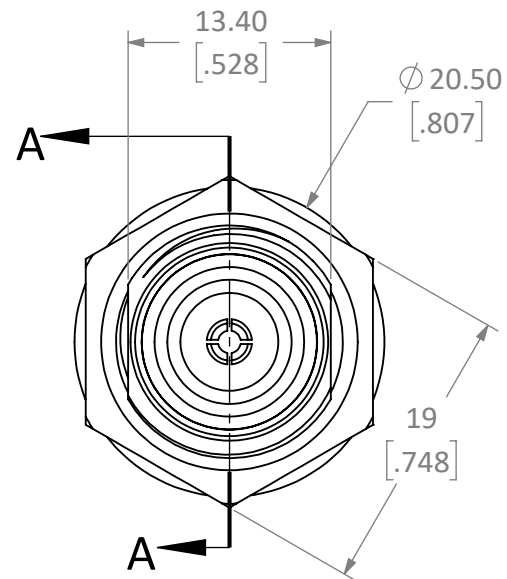


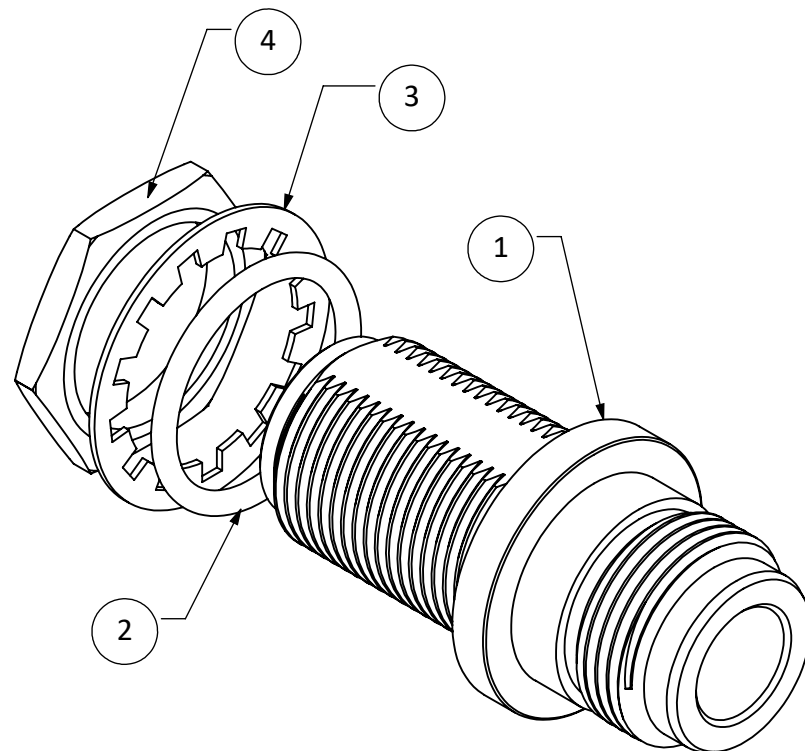
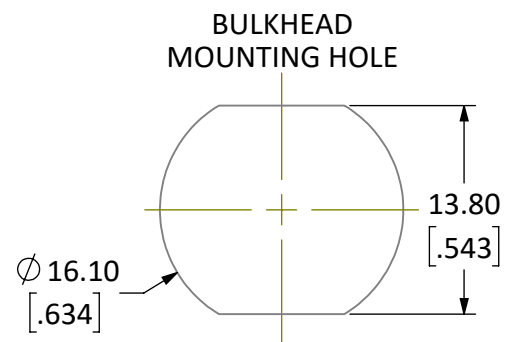
BILL OF MATERIALS			
ITEM	QTY.	Unit	DESCRIPTION
1	1	EA	CONNECTOR INTERFACE HOUSING, WHITE BRONZE
2	1	EA	O-RING 1.7THK 19mm OD, PANEL SEAL, SILICONE
3	1	EA	WASH, LOC, .57THK X 22 OD WHT-BRNZ
4	1	EA	NUT, 5/8-24UNEF X 2.6mm WHT-BRNZ



**SECTION A-A
SOLID SHARING MODEL**

NOTES: (UNLESS OTHERWISE SPECIFIED)

1. ALL DIMENSIONS ARE IN MILLIMETER [inch].
2. DIMENSIONS APPLY AFTER FINISHING.
3. MANUFACTURE TO BE COMPLIANT WITH EU RoHS DIRECTIVE, USE MATERIALS THAT DO NOT CONTAIN REACH SUBSTANCES OF VERY HIGH CONCERN >1000ppm, AND USE DRC CONFLICT-FREE SOURCED MATERIALS.
4. IMPEDANCE: 50Ω
5. FREQUENCY RANGE: DC 0-11 GHz
6. VSWR: 1.3 Max
7. MAX DIELECTRIC: 1500Vrms min.
8. CONTACT RESISTANCE:
 1. INNER: 1.5mΩ MAX
 2. OUTER: 0.5mΩ MAX
9. INTERFACE IAW MIL-STD-348A
10. OPERATING TEMP: -60°~165°C
11. TORQUE 19MM NUT TO COMPRESS O-RING TO 30%
12. DURABILITY: 500 CYCLES MIN



WARNING: THIS DRAWING CONTAINS PROPRIETARY INFORMATION THAT IS THE SOLE PROPERTY OF LINX TECHNOLOGIES, AND SHALL BE TREATED AS SUCH. NO DISCLOSURE OR REPRODUCTION OF THIS DOCUMENT IS PERMITTED, IN WHOLE OR IN PART, WITHOUT THE EXPRESS WRITTEN PERMISSION OF LINX TECHNOLOGIES OR ITS DESIGNATED AGENTS.

STE 159 ORT LANE
MERLIN, OR 97532

MATERIAL: BRASS BODY PHOSPHOR BRONZE	INTERPRET DIMENSIONS AND TOLERANCES PER ASME Y14.5. .X ±.2 .XX ±.10 .XXX ±.050	PROJECTION: 	TITLE: CONN N-N BLKHD SEA WHT-BNZ FEM 50Ω BLKHD/SOLDER
WEIGHT:	ANGLES: ±1° SURFACE:	SIZE B	DWG. NO. C-ADP-NF-NF-B-W
FINISH: WHITE BRONZE BODY GOLD	DRAWN: JHAGER ENGR:	DT: 9/14/20 DT:	REV A
SCALE: 2:1		DO NOT SCALE DRAWING	SHEET 1 OF 1