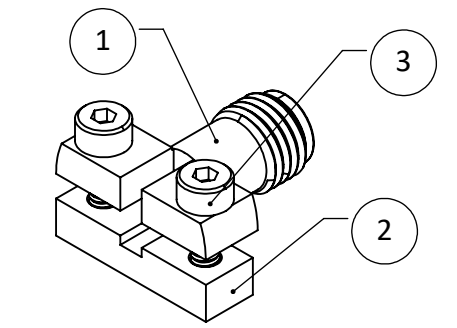
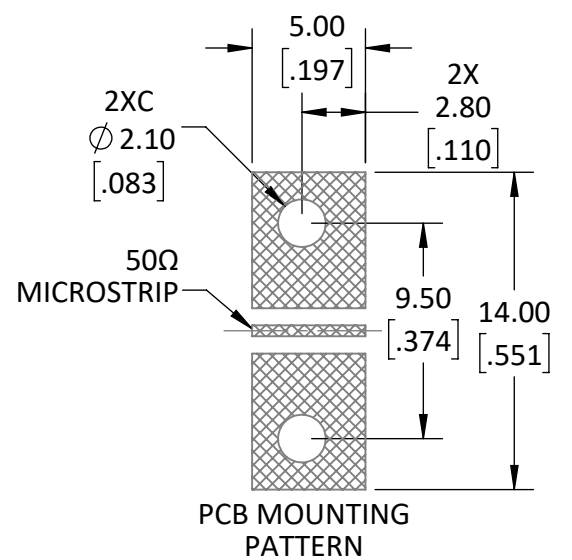
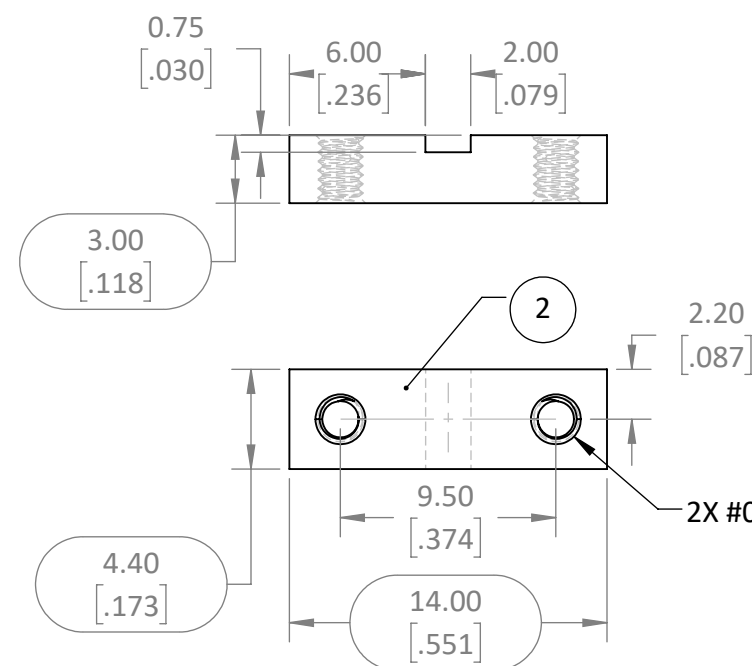
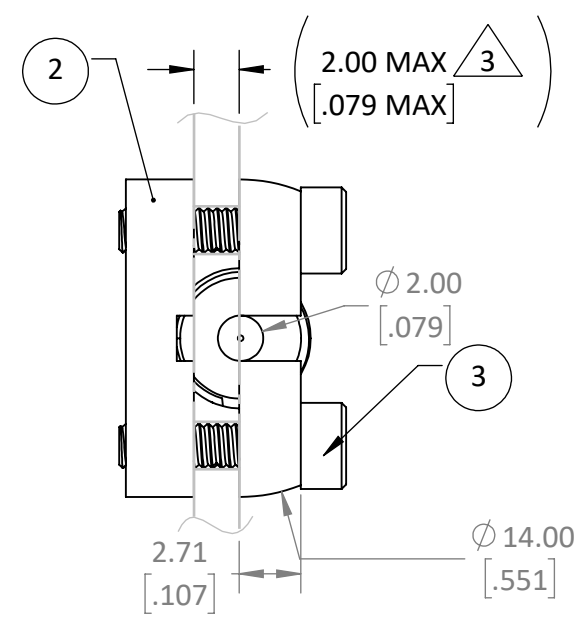
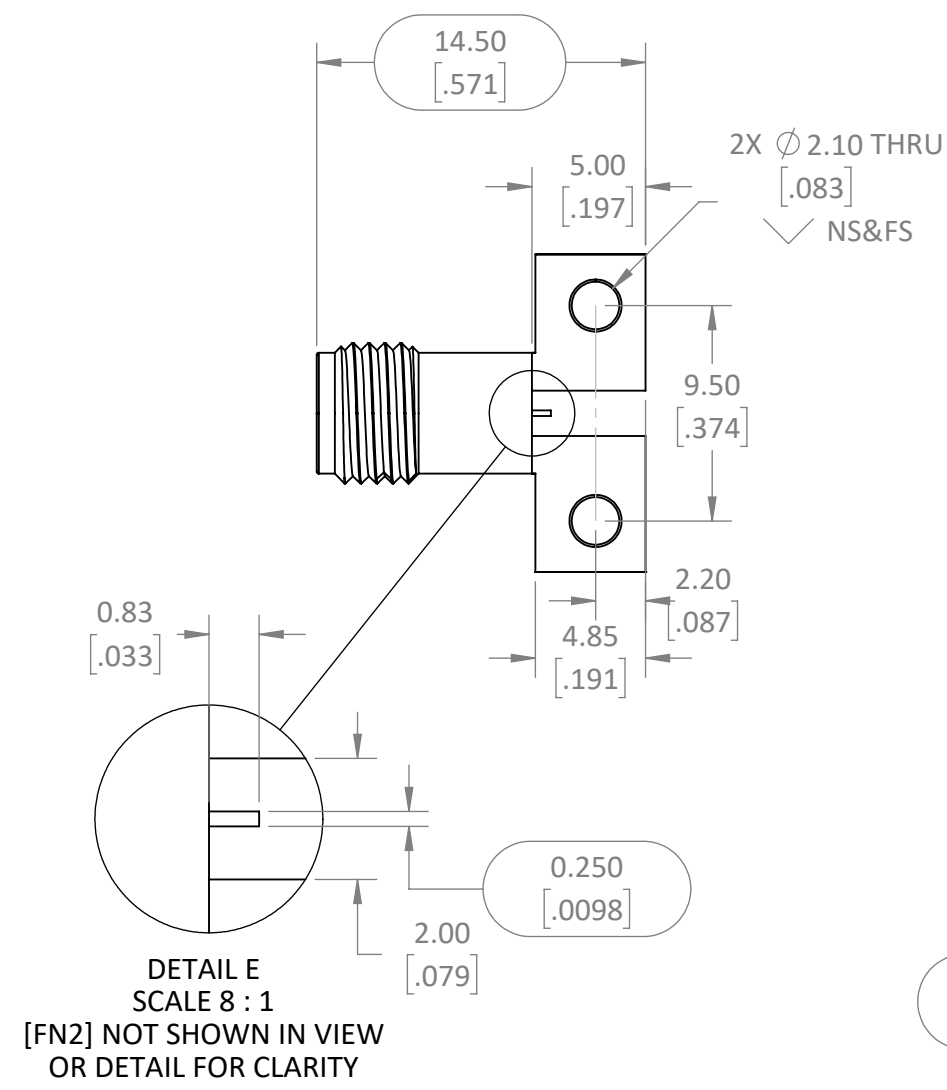


REVISIONS			
REV	DESCRIPTION	DATE	APPV
A	PRODUCTION RELEASE	JHAGER 8/9/22	



- NOTES: (UNLESS OTHERWISE SPECIFIED)
- ALL DIMENSIONS ARE IN MILLIMETERS [IN].
 - DIMENSIONS APPLY AFTER FINISHING.
 - MANUFACTURE TO BE COMPLIANT WITH EU RoHS DIRECTIVE, USE MATERIALS THAT DO NOT CONTAIN REACH SUBSTANCES OF VERY HIGH CONCERN >1000ppm, AND USE DRC CONFLICT-FREE SOURCED MATERIALS.
 - ELECTRICAL PROPERTIES ARE LISTED FOR REFERENCE ONLY. SEE LINX DATA SHEET FOR COMPLETE SPECIFICATIONS.
 - IMPEDANCE: 50Ω
 - FREQUENCY: DC~40GHz
 - VSWR: 1.50
 - PCB LAYOUT PATTERN AVAILABLE UPON REQUEST
 - CONNECTOR QUALIFIED IAW LINX INTERNAL TEST PLAN AT LATEST REVISION:
 - MECHANICAL:
 - UNLISTED DIMENSIONS ARE CONTROLLED BY SOLID MODEL AT LATEST REVISION
 - OPERATING TEMPERATURE: -65°~165°C
 - PCB MAX THICKNESS: 2mm [0.0625"]
 - INTERFACE: 2.92mm IAW IEC 61169-35 [SMK TYPE MIL-STD-348B]
 - CENTER CONDUCTOR FINISH: Au [30μ"] / Ni [100μ"] / BeCu
 - MAX FASTENING TORQUE: .3 Nm [12 in/oz]. HAND TIGHTEN AND STAGGER TORQUE TO MAINTAIN EVEN CLAMP.
 - CAUTION: DO NOT USE STEEL TOOLS ON THIS PART.
 - PACKAGE PRODUCTS TO PREVENT DAMAGE IN TRANSIT.
 - LABEL LOT PACKAGING IAW LINX LABEL DRAWING PROVIDED.

ITEM NUMBER	DESCRIPTION
1	CONNECTOR, [SEE TABLE], GOLD/BRASS
2	CLAMP NUT, 4.4X3X14 GOLD/BRASS
3	SCREW SHCS, 0-80UNF-2B x 8mm,CRES PAS

WARNING: THIS DRAWING CONTAINS PROPRIETARY INFORMATION THAT IS THE SOLE PROPERTY OF LINX TECHNOLOGIES, AND SHALL BE TREATED AS SUCH. NO DISCLOSURE OR REPRODUCTION OF THIS DOCUMENT IS PERMITTED, IN WHOLE OR IN PART, WITHOUT THE EXPRESS WRITTEN PERMISSION OF LINX TECHNOLOGIES OR ITS DESIGNATED AGENTS.

STE 159 ORT LANE
MERLIN, OR 97532

MATERIAL: BRASS BeCu, PTFE	INTERPRET DIMENSIONS AND TOLERANCES PER ASME Y14.5.		PROJECTION:
WEIGHT:	.X ±2.0 .XX ±1.00 .XXX ±.500	ANGLES: ±1° SURFACE:	
FINISH: Au[3μ"]Ni[50μ"]Cu[50μ"] Au[30μ"]Ni[100μ"]	DRAWN: JHAGER	DT: 8/11/22	
	ENGR: DASARATHAN	DT: 8/11/22	

TITLE: CONNECTOR 2.92mm JACK CLAMP END LAUNCH GOLD W/HRDWR		
SIZE B	DWG. NO. C-CON292003-1-G	REV A
SCALE: 3:1	DO NOT SCALE DRAWING	SHEET 1 OF 1