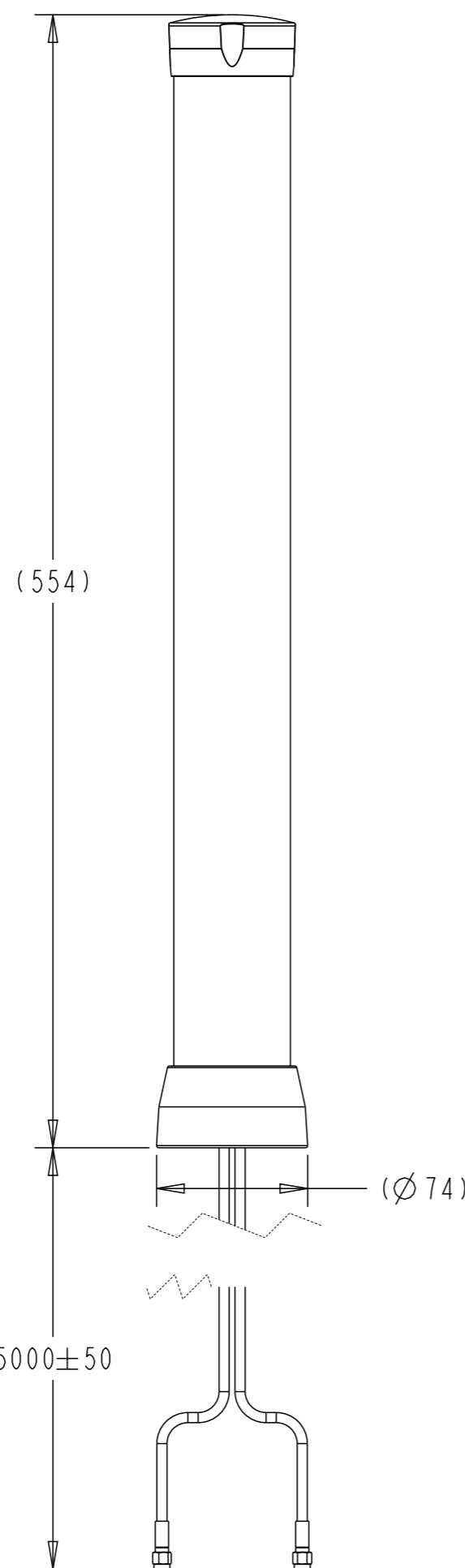


REVISIONS


| P | LTR | DESCRIPTION | DATE | DWN | APVD |
|---|-----|---------------|-----------|-----|------|
| | A | ECN-23-199917 | 23FEB2023 | CYH | WTN |
| | A2 | ECN-23-222705 | 18JUL2023 | CYH | WTN |
| | | | | | |
| | | | | | |



| Parameter | Performance | | | |
|-----------------------------|-------------------------|-----------|-----------|-----------|
| Part Number | OPD61603-500SMAM | | | |
| TCPN | L000320-01 | | | |
| Frequency Bands, MHz | 617-960 | 1427-2700 | 3300-4800 | 4900-6000 |
| Peak Gain, dBi (Max)* | 3 | 5 | 4.09 | 4.62 |
| Total Efficiency (Average)* | 78% | 77% | 63% | 60% |
| VSWR (Average)** | <2.5:1 | | | |
| ECC*** | <0.1 | | | |
| Nominal Impedance | 50 Ohm | | | |
| Polarization | Linear, Vertical | | | |
| Azimuth Beam Width | 360°, Omnidirectional | | | |
| Input Power, Max | 10W | | | |
| Operating Temperature | -40°C ~ +85°C | | | |
| Storage Temperature | -40°C ~ +85°C | | | |
| Weight (Without mounting) | 790g | | | |
| RF Connector | SMA, Male | | | |
| Radome | Polycarbonate, UV | | | |
| Cap & Base | ASA, UV | | | |
| Color | White | | | |
| Cable | LMR195 equivalent Black | | | |
| Cable Length | 5m | | | |
| Wind Rating (Survival) | 110mph | | | |
| Ingression Protection | IP67 | | | |
| Material Compliance | RoHS | | | |



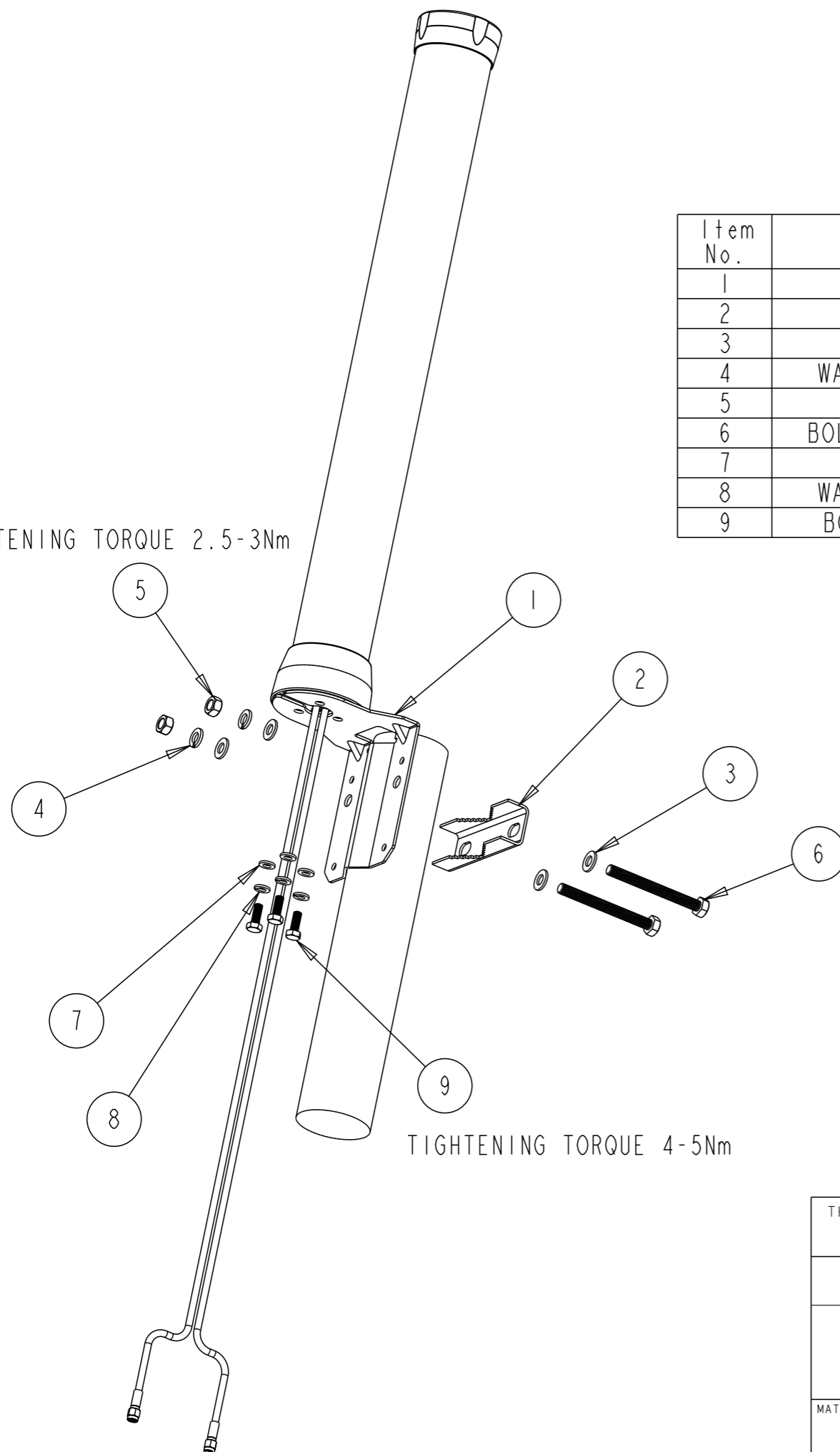
*Note: Data for Peak Gain and Total Efficiency is measured with 0.5m cable length
 **Note: VSWR data is measured with the antenna installed on the mounting bracket
 ***Note: Simulation data

| | | | | | |
|--|--|------------------|------------|---|--------------|
| THIS DRAWING IS A CONTROLLED DOCUMENT. | | DWN CY HANG | 23-Feb-23 |  TE Connectivity | |
| DIMENSIONS: mm | | CHK WT NG | 23FEB2023 | | |
| TOLERANCES UNLESS OTHERWISE SPECIFIED: | | APVD WT NG | 23FEB2023 | NAME OMNI, 2x2 MIMO BATON 617-960/1427-6000MHZ | |
| 0 PLC ±- | | PRODUCT SPEC | 108-160799 | - | |
| 1 PLC ±0.25 | | APPLICATION SPEC | - | SIZE | A3 |
| 2 PLC ±0.13 | | WEIGHT | - | CAGE CODE | 00779 |
| 3 PLC ± | | CUSTOMER DRAWING | - | DRAWING NO | ©-L000320-01 |
| 4 PLC ±- | | SCALE | 1:10 | RESTRICTED TO | - |
| ANGLES ±0.5 | | FINISH | - | SHEET | 1 OF 3 |
| MATERIAL | | | | REV | A2 |

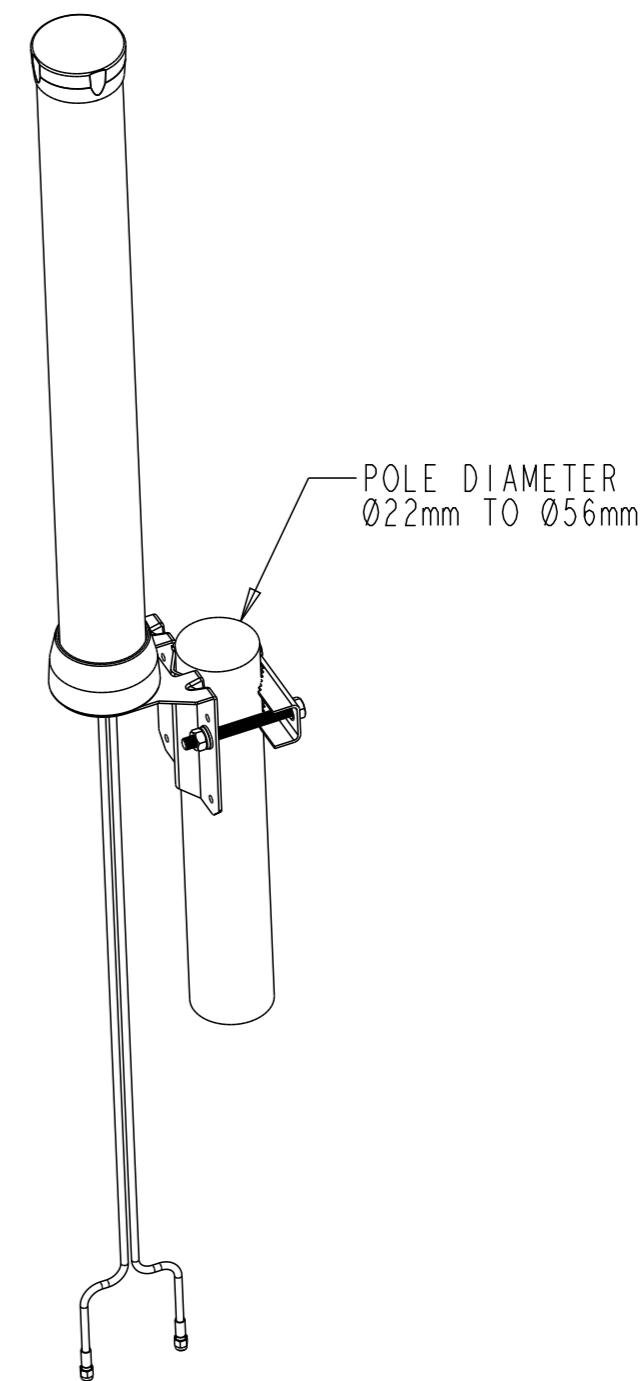
| P | LTR | DESCRIPTION | DATE | DWN | APVD |
|---|-----|-------------|------|-----|------|
| | | | | | |

| Item No. | DESCRIPTION | QUANTITY |
|----------|------------------------|----------|
| 1 | MOUNT BRACKET | 1 |
| 2 | POLE CLAMP | 1 |
| 3 | WASHER, FLAT M8 | 4 |
| 4 | WASHER, SPLIT LOCK M8 | 2 |
| 5 | NUT, HEX M8x1.25 | 2 |
| 6 | BOLT, HEX M8x1.25x80mm | 2 |
| 7 | WASHER, FLAT M6 | 3 |
| 8 | WASHER, SPLIT LOCK M6 | 3 |
| 9 | BOLT, HEX M6x1x16mm | 3 |

TIGHTENING TORQUE 2.5-3Nm



TIGHTENING TORQUE 4-5Nm

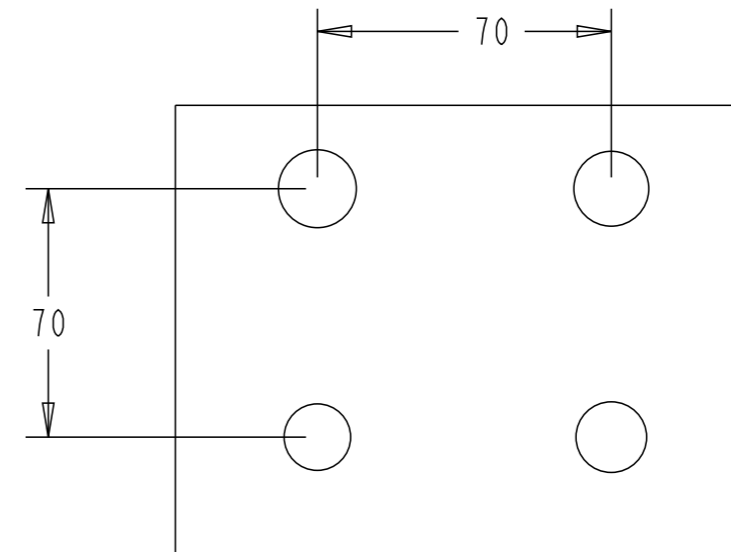
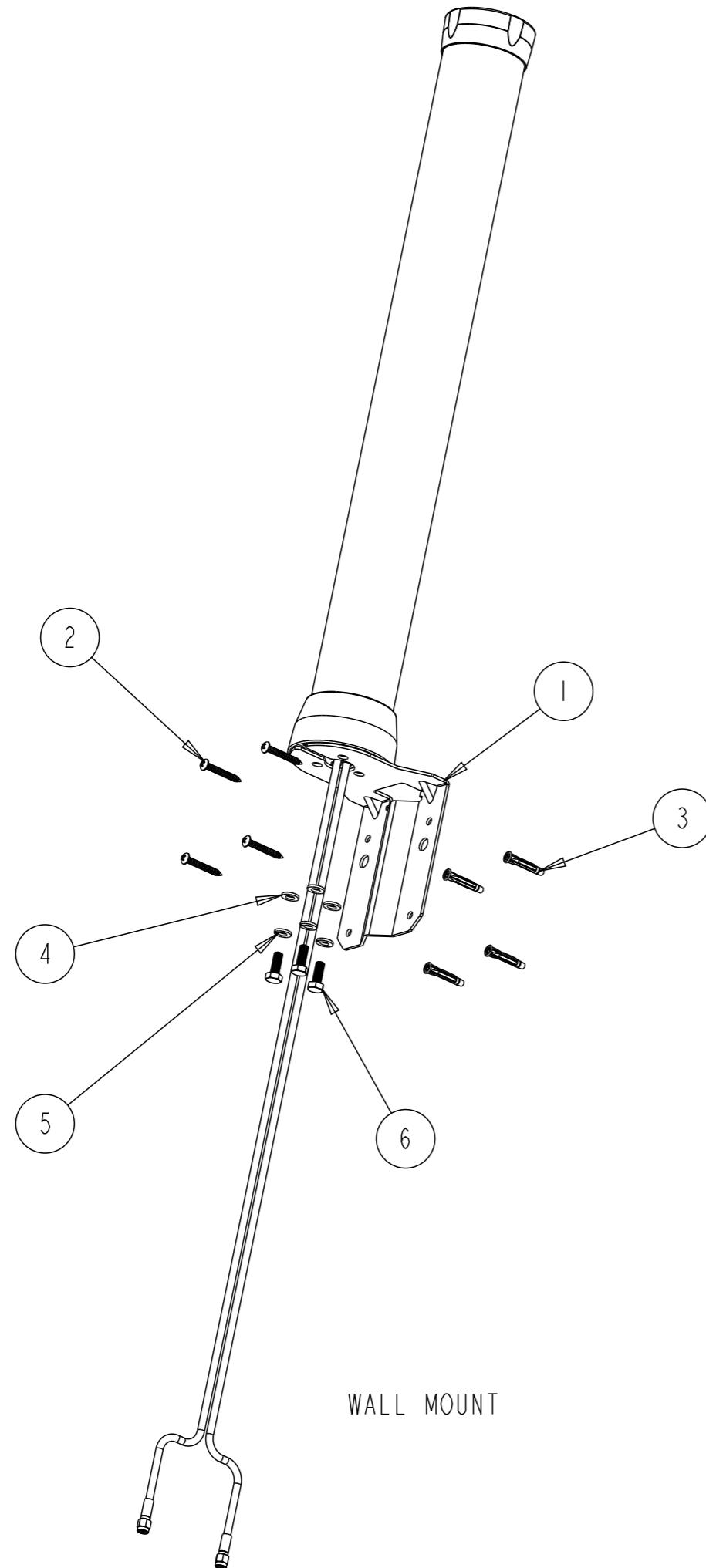


POLE MOUNT

| | | | | | |
|--|--|------------------|------------|--|------------|
| THIS DRAWING IS A CONTROLLED DOCUMENT. | | DWN CY HANG | 23-Feb-23 | | |
| DIMENSIONS: mm | | CHK WT NG | 23FEB2023 | | |
| TOLERANCES UNLESS OTHERWISE SPECIFIED: | | APVD WT NG | 23FEB2023 | NAME OMNI, 2x2 MIMO BATON 617-960/1427-6000MHZ | |
| 0 PLC ±- | | PRODUCT SPEC | 108-160799 | SIZE | |
| 1 PLC ±0.25 | | APPLICATION SPEC | - | CAGE CODE | DRAWING NO |
| 2 PLC ±0.13 | | WEIGHT | - | A3 | 00779 |
| 3 PLC ± | | CUSTOMER DRAWING | - | G=L000320-01 | |
| 4 PLC ±- | | SCALE | 1:10 | RESTRICTED TO | |
| ANGLES ±0.5 | | SHEET | 2 OF 3 | REV | |
| MATERIAL | | FINISH | - | A2 | |

| P | LTR | DESCRIPTION | DATE | DWN | APVD |
|---|-----|-------------|------|-----|------|
| | | | | | |

| Item No. | DESCRIPTION | QUANTITY |
|----------|--------------------------------|----------|
| 1 | MOUNT BRACKET | 1 |
| 2 | SCREW, PHILIP 8-18x1-1/4 | 4 |
| 3 | ANCHOR, TWIST ACTION 6-8x1-1/4 | 4 |
| 4 | WASHER, FLAT M6 | 3 |
| 5 | WASHER, SPLIT LOCK M6 | 3 |
| 6 | BOLT, HEX M6x1x16mm | 3 |



WALL HOLE DIMENSION

| | | | | | | | | | | | | | | | | | |
|---|-------|------------------|--------------------|--|---------------|-------|-------|-------|---|-------|----|--------|------|----------------------------|--------------------------|--|--|
| THIS DRAWING IS A CONTROLLED DOCUMENT. | | DWN CY HANG | 23-Feb-23 | | | | | | | | | | | | | | |
| DIMENSIONS: mm | | CHK WT NG | 23FEB2023 | | | | | | | | | | | | | | |
| TOLERANCES UNLESS OTHERWISE SPECIFIED: | | APVD WT NG | 23FEB2023 | NAME OMNI, 2x2 MIMO BATON 617-960/1427-6000MHZ | | | | | | | | | | | | | |
| <table border="0"> <tr> <td>0 PLC</td> <td>±-</td> </tr> <tr> <td>1 PLC</td> <td>±0.25</td> </tr> <tr> <td>2 PLC</td> <td>±0.13</td> </tr> <tr> <td>3 PLC</td> <td>±</td> </tr> <tr> <td>4 PLC</td> <td>±-</td> </tr> <tr> <td>ANGLES</td> <td>±0.5</td> </tr> </table> | | 0 PLC | ±- | 1 PLC | ±0.25 | 2 PLC | ±0.13 | 3 PLC | ± | 4 PLC | ±- | ANGLES | ±0.5 | PRODUCT SPEC 108-160799 | DRAWING NO L000320-01 | | |
| 0 PLC | ±- | | | | | | | | | | | | | | | | |
| 1 PLC | ±0.25 | | | | | | | | | | | | | | | | |
| 2 PLC | ±0.13 | | | | | | | | | | | | | | | | |
| 3 PLC | ± | | | | | | | | | | | | | | | | |
| 4 PLC | ±- | | | | | | | | | | | | | | | | |
| ANGLES | ±0.5 | | | | | | | | | | | | | | | | |
| MATERIAL | | APPLICATION SPEC | SIZE A3 | | RESTRICTED TO | | | | | | | | | | | | |
| FINISH | | WEIGHT | CAGE CODE 00779 | DRAWING NO L000320-01 | SCALE 1:10 | | | | | | | | | | | | |
| - | | CUSTOMER DRAWING | SHEET 3 OF 3 | | REV A2 | | | | | | | | | | | | |

WALL MOUNT