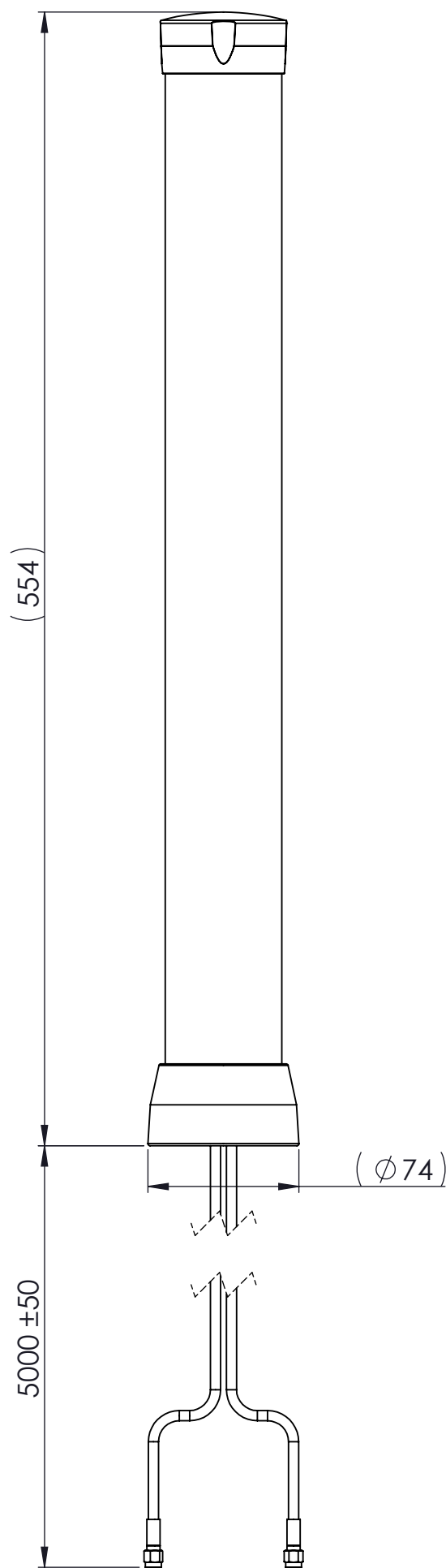


REVISIONS

REV	DESCRIPTION	DATE	DWN	APVD
A1	ECD-23-00016	13JAN2023	CYH	WT NG
A2	ECD-23-00144	18JUL2023	CYH	WT NG



Parameter	Performance			
Part Number	OPD61603-500SMAM			
TCPN	L000320-01			
Frequency Bands, MHz	617-960	1427-2700	3300-4800	4900-6000
Peak Gain, dBi (Max)*	3	5	4.09	4.62
Total Efficiency (Average)*	78%	77%	63%	60%
VSWR (Average)**	<2.5:1			
ECC***	<0.1			
Nominal Impedance	50 Ohm			
Polarization	Linear, Vertical			
Azimuth Beam Width	360°, Omnidirectional			
Input Power, Max	10W			
Operating Temperature	-40 °C ~ +85 °C			
Storage Temperature	-40 °C ~ +85 °C			
Weight (Without mounting)	790g			
RF Connector	SMA, Male			
Radome	Polycarbonate, UV			
Cap & Base	ASA, UV			
Color	White			
Cable	LMR195 equivalent Black			
Cable Length	5m			
Wind Rating (Survival)	110mph			
Ingression Protection	IP67			
Material Compliance	RoHS			



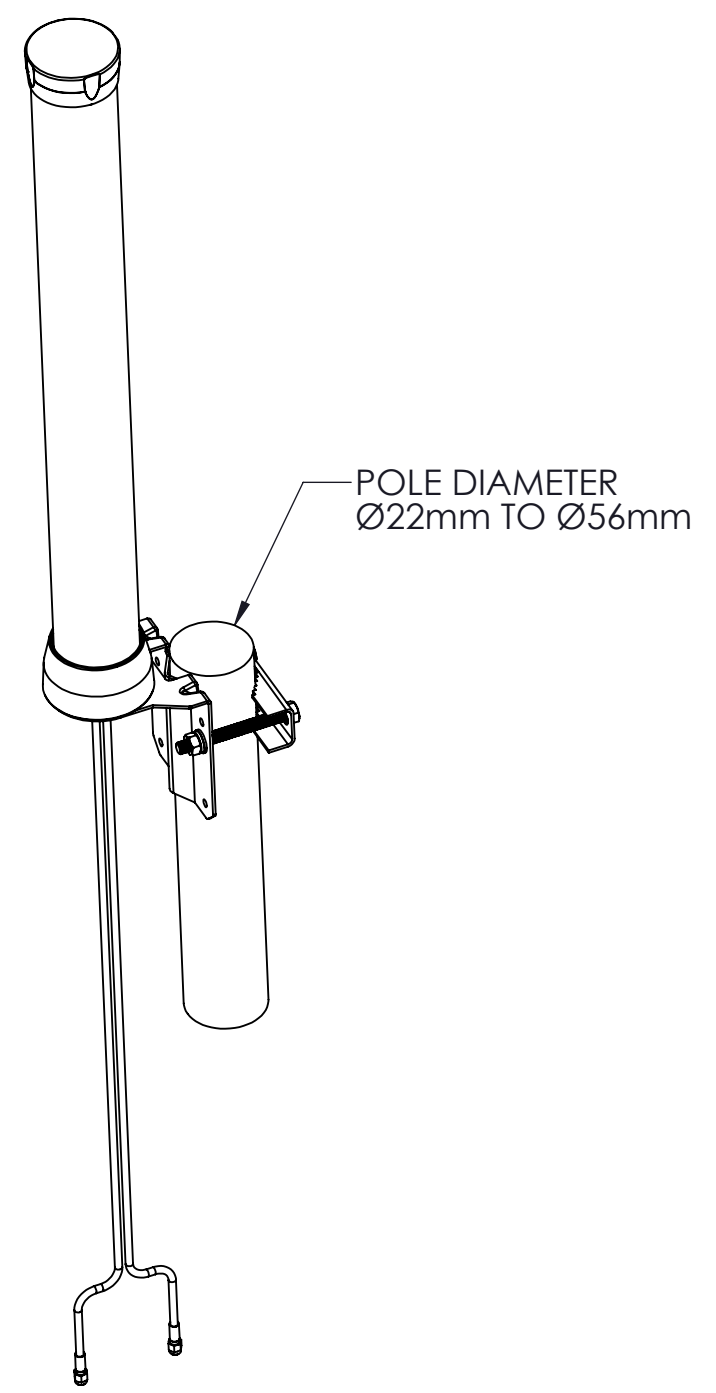
*Note: Data for Peak Gain and Total Efficiency is measured with 0.5m cable length
 **Note: VSWR data is measured with the antenna installed on the mounting bracket
 ***Note: Simulation data

THIS DRAWING IS A CONTROLLED DOCUMENT.		DWN CY HANG 04-JAN-2023		
DIMENSIONS: mm		CHK RIZWAN KHAN 04-JAN-2023		
TOLERANCES UNLESS OTHERWISE SPECIFIED:		APVD WT NG 04-JAN-2023	NAME OMNI,2X2 MIMO BATON 617-960/1427-6000MHz	
0 PLC ±0.5		PRODUCT SPEC 108-160799	RESTRICTED TO	
1 PLC ±0.25		APPLICATION SPEC -	SIZE A3	CAGE CODE 00779
2 PLC ±0.13		WEIGHT -	DRAWING NO C=L000320-01	SCALE 1:10
3 PLC ±		CUSTOMER DRAWING	SHEET 1 OF 3	REV A2
4 PLC ±				
ANGLES ±0.5°				
MATERIAL -				
FINISH -				

Item No.	DESCRIPTION	QUANTITY
1	MOUNT BRACKET	1
2	POLE CLAMP	1
3	WASHER,FLAT M8	4
4	WASHER,SPLIT LOCK M8	2
5	NUT,HEX M8x1.25	2
6	BOLT,HEX M8x1.25x80mm	2
7	WASHER,FLAT M6	3
8	WASHER,SPLIT LOCK M6	3
9	BOLT,HEX M6x1X16mm	3

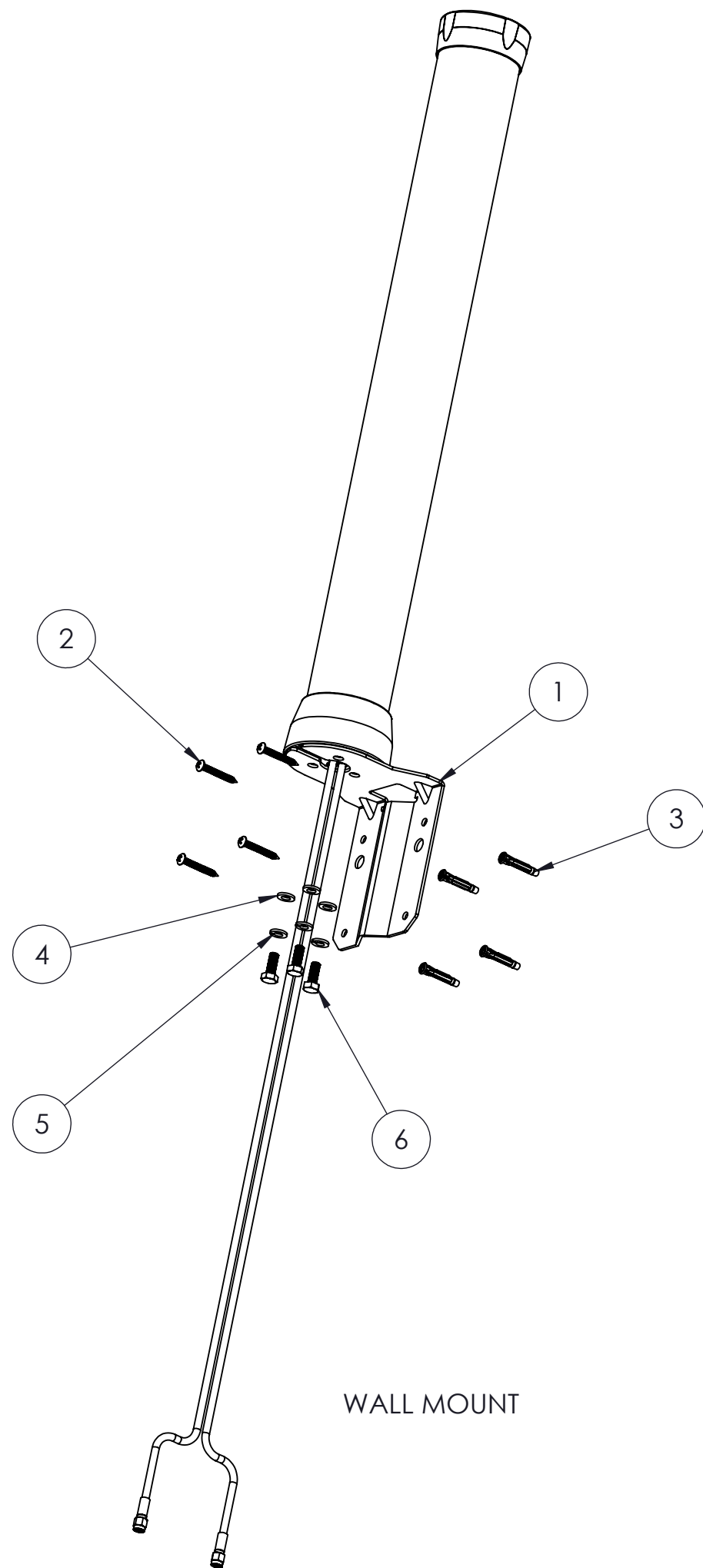
TIGHTENING TORQUE 2.5-3Nm

TIGHTENING TORQUE 4-5Nm

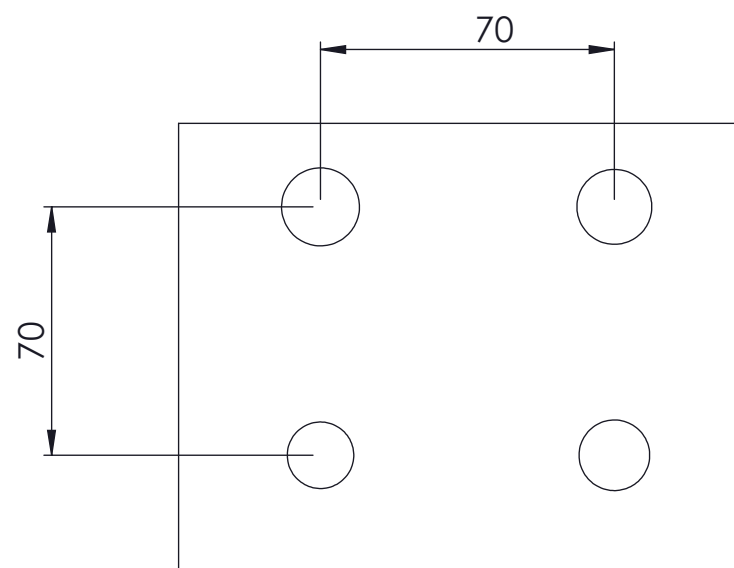


POLE MOUNT

THIS DRAWING IS A CONTROLLED DOCUMENT.		DWN	04-JAN-2023		 TE Connectivity
		CHK	04-JAN-2023		
		APVD	04-JAN-2023		
DIMENSIONS: mm	TOLERANCES UNLESS OTHERWISE SPECIFIED:	PRODUCT SPEC		NAME	
	0 PLC ± 0.5	108-160799		OMNI,2X2 MIMO BATON	
	1 PLC ± 0.25	APPLICATION SPEC		617-960/1427-6000MHz	
	2 PLC ± 0.13	WEIGHT		SIZE	RESTRICTED TO
	3 PLC ±	g		A3	
	4 PLC ±	CUSTOMER DRAWING		CAGE CODE	
	ANGLES ± 30'	SCALE 1:10		00779	
MATERIAL	FINISH	DRAWING NO		C=L000320-01	
		SHEET 2 OF 3		REV A2	



Item No.	DESCRIPTION	QUANTITY
1	MOUNT BRACKET	1
2	SCREW, PHILIP 8-18x1-1/4	4
3	ANCHOR, TWIST ACTION 6-8x1-1/4	4
4	WASHER, FLAT M6	3
5	WASHER, SPLIT LOCK M6	3
6	BOLT, HEX M6x1X16mm	3



WALL HOLE DIMENSION

WALL MOUNT

THIS DRAWING IS A CONTROLLED DOCUMENT.		DWN	04-JAN-2023		
		CHK	04-JAN-2023		
		APVD	04-JAN-2023		
DIMENSIONS: mm 		TOLERANCES UNLESS OTHERWISE SPECIFIED: 0 PLC ± 0.5 1 PLC ± 0.25 2 PLC ± 0.13 3 PLC ± 4 PLC ± ANGLES ± 30°		NAME	OMNI, 2X2 MIMO BATON 617-960/1427-6000MHz
MATERIAL		FINISH		PRODUCT SPEC	108-160799
				APPLICATION SPEC	-
		WEIGHT		SIZE	A3
				CAGE CODE	00779
				DRAWING NO	©=L000320-01
				RESTRICTED TO	
CUSTOMER DRAWING				SCALE	1:10
				SHEET	3 OF 3
				REV	A2