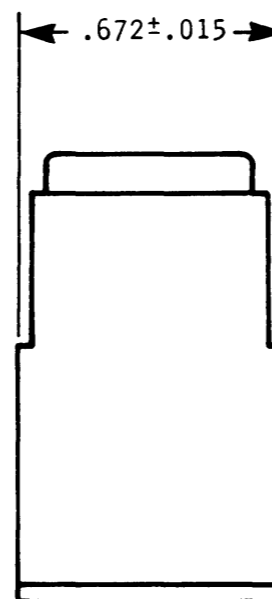
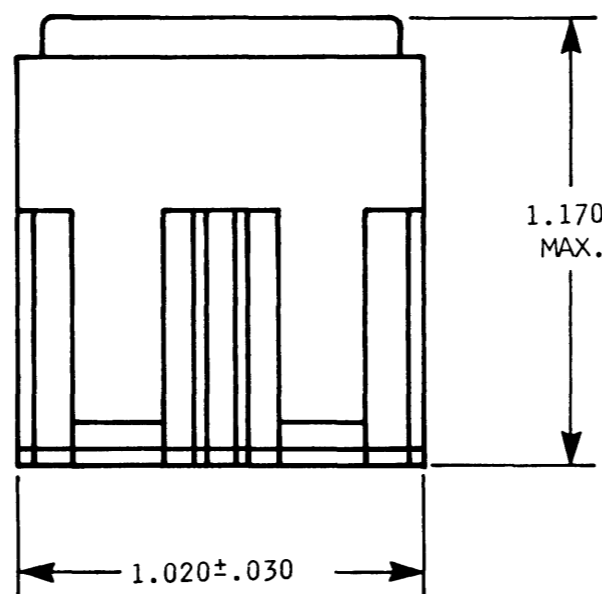
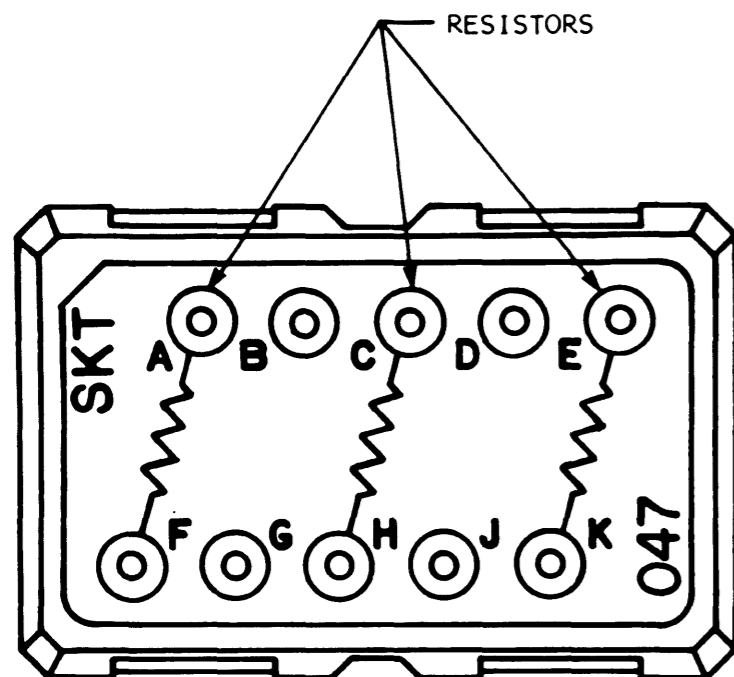


CTJ420E047

REVISIONS

SYM	DESCRIPTION	DATE	APPROVED
N/C	NEW RELEASE PER E.O. 91381	4-21-81	<i>L. Stalle</i>




12. THIS ASSEMBLY CONFORMS TO AFLC 8027520-4 SPEC.
11. SOCKET CONTACTS MEET THE REQUIREMENTS OF MIL-C-39029/22-20-20.
10. JUNCTION ELECTRONIC COMPONENT TEMPERATURE RANGE: -67°F TO 392°F (-55°C TO 200 °C).
9. TERMINALS B, D, G & J ARE SPARE (NO CONNECTION).
8. RESISTOR: RWR80S60R4FM
WATTS: 2 WATT.
7. MATERIALS AND FINISHES:
HOUSING - THERMO PLASTIC
GROMMET - SILICONE ELASTOMER
PIN CONTACTS - COPPER ALLOY PLATED GOLD
6. REQUIRES CONTACT TOOL NO. M15570-20.
5. SEE ENVELOPE DRAWING NO. CTJ-3*-*** FOR SUITABLE RAIL ASSEMBLIES.
4. FOR CONTACT DATA SEE ENVELOPE DRAWING 1625-1-0000.
3. CTJ420E 047
CIRCUIT ARRANGEMENT
BASIC IDENTIFIER
2. THE CIRCUIT IDENTIFICATION WILL BE SCREENED ON JUNCTION
1. DIMENSIONS ARE IN INCHES UNLESS OTHERWISE SPECIFIED.

NOTE:

SIGNATURE & DATE	
DR	<i>Lashway 4-21-81</i>
CHK	<i>L. Stalle 4-29-81</i>
PE	<i>W. DeNaro 4-21-81</i>
APPD	
SCALE	NONE
WT	

JUNCTION ASSEMBLY
ELECTRONIC COMPONENT
SIZE 12
SIZE 20 CONTACTS
047 ARRANGEMENT

ENVELOPE

CP	MATL CODE
The Deutsch Company ELECTRONIC COMPONENTS DIVISION  Manufactured in Burbank, California	
B	CTJ420E047
DWG SIZE	CODE 11139 SHEET 1 OF 1