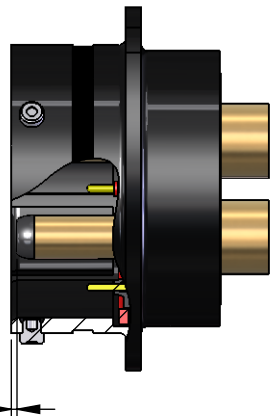
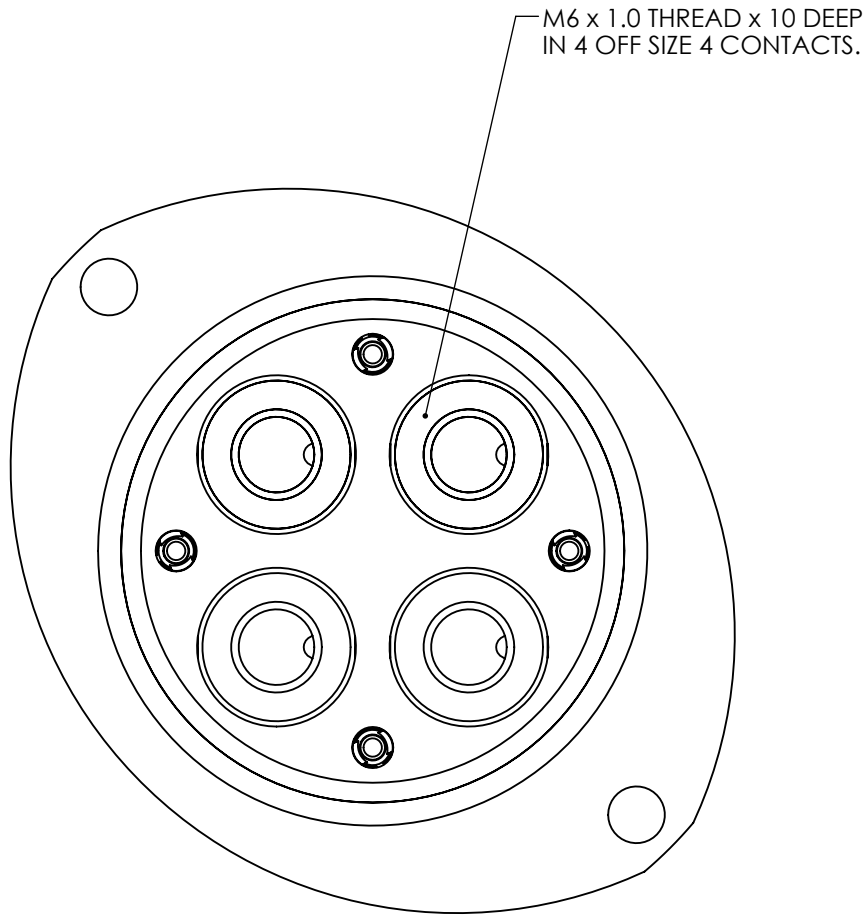


PART No. AND BATCH No.
MARKED OVER COLOUR BAND



NOTES:

1. MATERIALS:

- ALUMINIUM ALLOY SHELL WITH BLACK ZINC PLATING.
- GOLD PLATED COPPER ALLOY CONTACT.
- RESILIENT THERMOPLASTIC INSULATORS.
- FLUORINATED SILICONE INTERFACIAL SEAL.

2. SERVICE RATING AT STANDARD TEMPERATURE AND PRESSURE:

- CONTINUOUS CURRENT = 125A.
- 150A FOR UP TO 4 HOURS.
- UP TO 3 MINUTES AT 200A. (DEPENDANT UPON AMBIENT TEMPERATURE. REFER TO FACTORY).

SERVICE RATINGS ARE DEPENDANT ON ENVIRONMENTAL CONDITIONS.
AT ELEVATED ENVIRONMENTAL TEMPERATURES DERATING OF THE ABOVE FIGURES WILL BE REQUIRED.

3. TEMPERATURE RATING -55°C TO +175°C. THE UPPER LIMIT IS THE MAXIMUM TEMPERATURE RESULTING FROM A COMBINATION OF AMBIENT TEMPERATURE AND HEATING DUE TO CURRENT.


4. CONTACT CAVITY IDENTIFICATION, PIN = CLOCKWISE AND SOCKET = ANTICLOCKWISE. 1.32 0.47

5. PART NUMBER AND BATCH NUMBER EXAMPLE:

DEUTSCH ASHD 0 44420 P N 993B RP654321
SUITABLE SPACE _____ BATCH NUMBER
BASIC NUMBER _____ MOD CODE
SHELL TYPE _____ ORIENTATION
CONTACT LAYOUT (SIZE 24 ONLY) _____ CONTACT TYPE
4xSIZE 4 CONTACT AND 4xSIZE 20 CONTACTS

TO FRONT OF
SIZE 4 PIN CONTACT
TYP 4 PLCS

A	61209	KJF	JHJ	MRD	MJS	18/07/12
ISSUE	CHANGE NOTE	DRAWN	CHECKED	APP. ENG.	APP. MARKETING	DATE

MATERIAL		<div><div>©</div><div>THE COPYRIGHT OF THIS DRAWING IS RESERVED BY DEUTSCH UK. IT IS ISSUED ON CONDITION THAT IT IS NOT COPIED, REPRODUCED OR DISCLOSED TO A THIRD PARTY EITHER WHOLLY OR IN PART WITHOUT THE CONSENT IN WRITING OF DEUTSCH UK.</div></div>	<div><div>ST LEONARDS ON SEA, EAST SUSSEX, TN38 9RF</div><div>TEL. +44 (0)1424 852721</div></div> <div><div>DEUTSCH</div><div>LEONARDS ON SEA, EAST SUSSEX, TN38 9RF</div><div>TEL. +44 (0)1424 852721</div></div> <div><div></div><div>611578-ENV</div></div>
HEAT TREATMENT & FINISH			
PACKAGING			
APP. I.E.D		<div>TITLE</div> <div>ASHD RECEPTACLE, CAPPED #4 PIN</div> <div>SIZE 24, 44420 PLANFORM</div> <div>993B MOD ENVELOPE</div>	<div>DRAWING NUMBER</div> <div>611578-ENV</div>
SCALE	1:1		