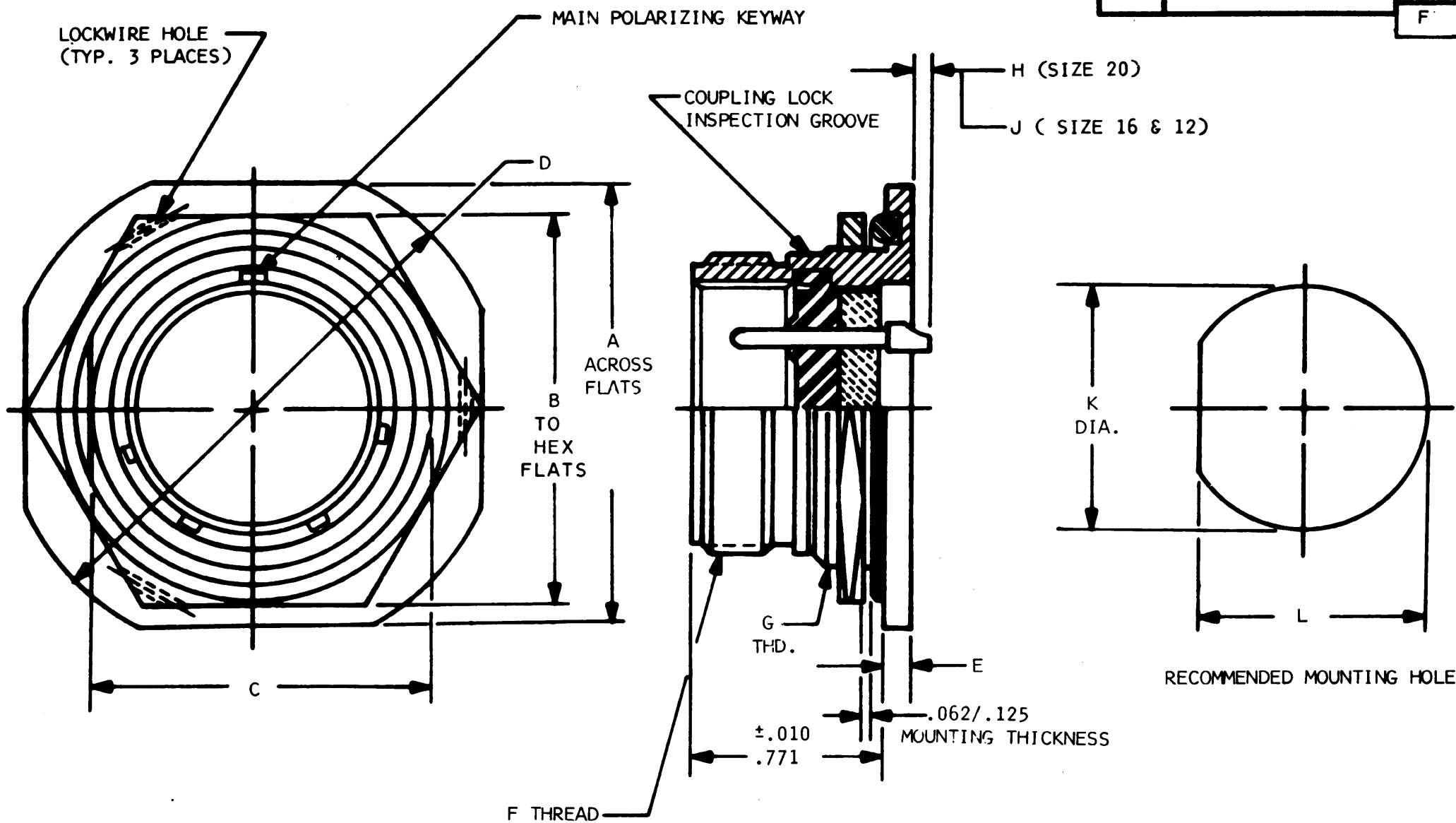


F	DBA34H-**-p**	REVISIONS			
		SYM	DESCRIPTION	DATE	APPROVED
F			REDRAWN PER E.O. 61145	6-6-69	J. VEGA



4. MATERIALS: SHELL-STAINLESS STEEL
 CONTACTS, PIN-HIGH NICKEL-IRON ALLOY
 INSERTS-COMPRESSION GLASS
 ELASTOMER
 "O" RING-SILICONE

3. FINISH: SHELL-ELECTRO POLISHED
 CONTACTS-GOLD PLATED.

2. CONTACT IDENTIFICATION IS IN CONTRASTING COLOR TO INSERTS.

1. FOR AVAILABLE CONTACT ARRANGEMENTS AND ALTERNATE INSERT POSITIONS, SEE PAGE 38500 IN DBA SECTION OF CATALOG.


SHELL SIZE	PART NUMBER	A±.015	B MAX.	C±.003	D±.015	E±.010	F THREAD UNEF	G THREAD	H±.030	J±.030	±.005 K DIA	±.005 L	APPROX. WT. IN LBS.
8	DBA34H-8-**-p**	.964	.765	.592	1.062	.117	9/16-24	5/8-20 UNEF	.150	.180	.635	.604	
10	DBA34H-10-**-p**	1.088	.953	.718	1.177	.117	11/16-24	3/4-20 UNEF	.150	.180	.760	.730	
12	DBA34H-12-**-p**	1.275	1.140	.905	1.364	.117	7/8-20	15/16-20 UNEF	.150	.180	.947	.917	
14	DBA34H-14-**-p**	1.375	1.205	.968	1.500	.117	15/16-20	1-20 UNEF	.150	.180	1.010	.980	
16	DBA34H-16-**-p**	1.500	1.329	1.093	1.625	.117	1 1/16-18	1 1/8-18 UNEF	.150	.180	1.135	1.105	
18	DBA34H-18-**-p**	1.625	1.455	1.217	1.750	.117	1 3/16-18	1 1/4-18 UNEF	.150	.180	1.260	1.225	
22	DBA34H-22-**-p**	1.938	1.705	1.467	2.062	.138	1 7/16-18	1 1/2-18 UNEF	.139	.169	1.510	1.475	
24	DBA34H-24-**-p**	2.125	1.892	1.654	2.250	.138	1 5/8-18	1 11/16-18 UNEF	.139	.169	1.697	1.667	

NOTE:

SIGNATURE & DATE	
DR	J. Vega 6-6-69
CHK	
PE	
APPD	
SCALE	NONE
WT	

RECEPTACLE, CONNECTOR,
 HERMETIC,
 THREAD COUPLING,
 JAM NUT MOUNTING

ENVELOPE

CP	MATL CODE
The Deutsch Company ELECTRONIC COMPONENTS DIVISION  Municipal Airport Banning, California	
B	DBA34H-**-p**
DWG SIZE	CODE 11139 SHEET 1 OF 1