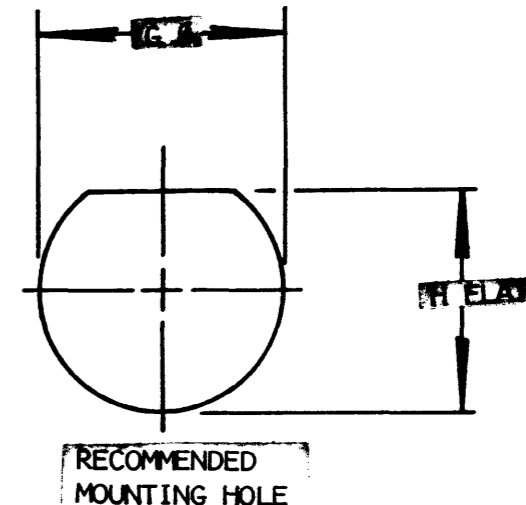
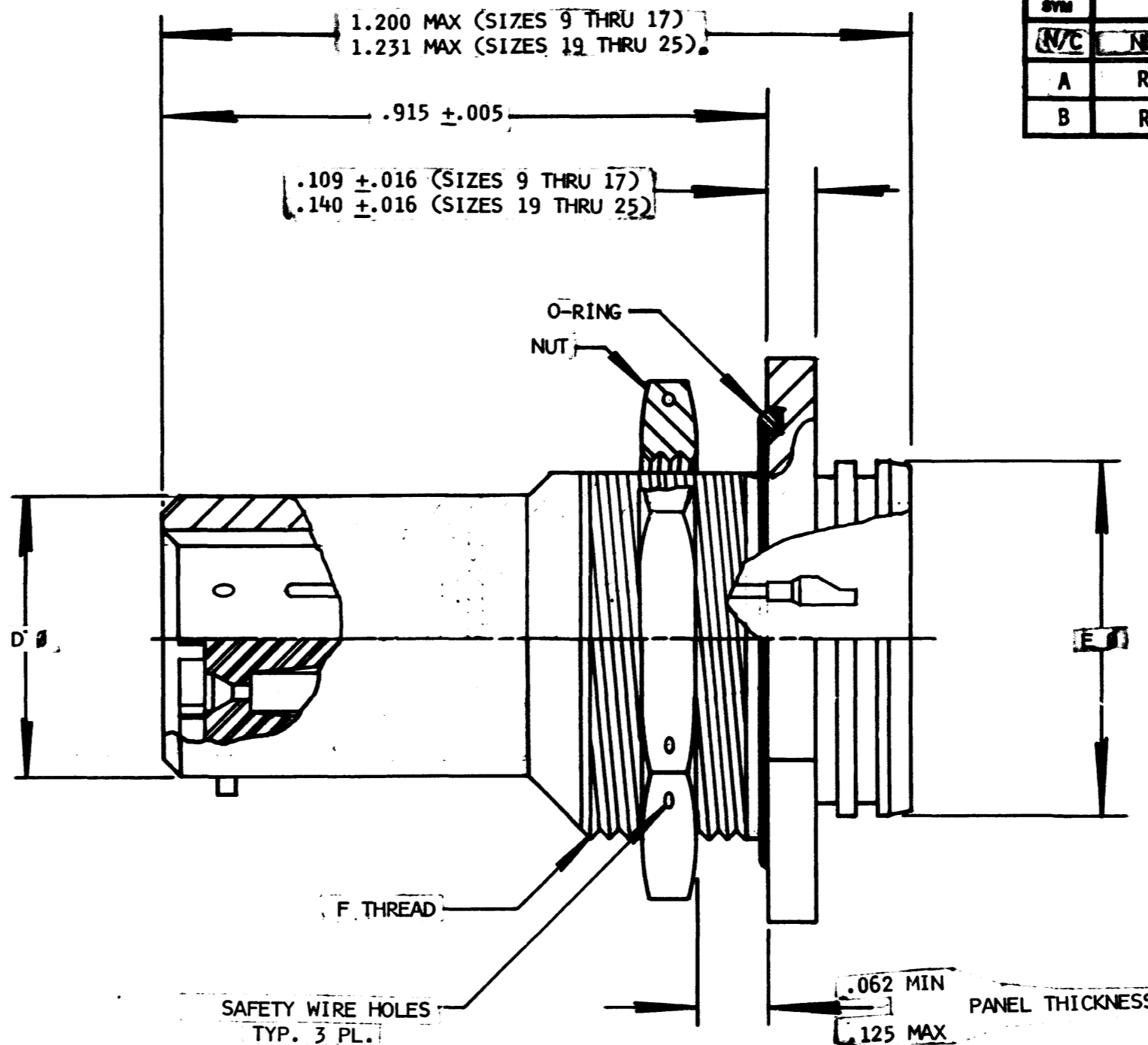
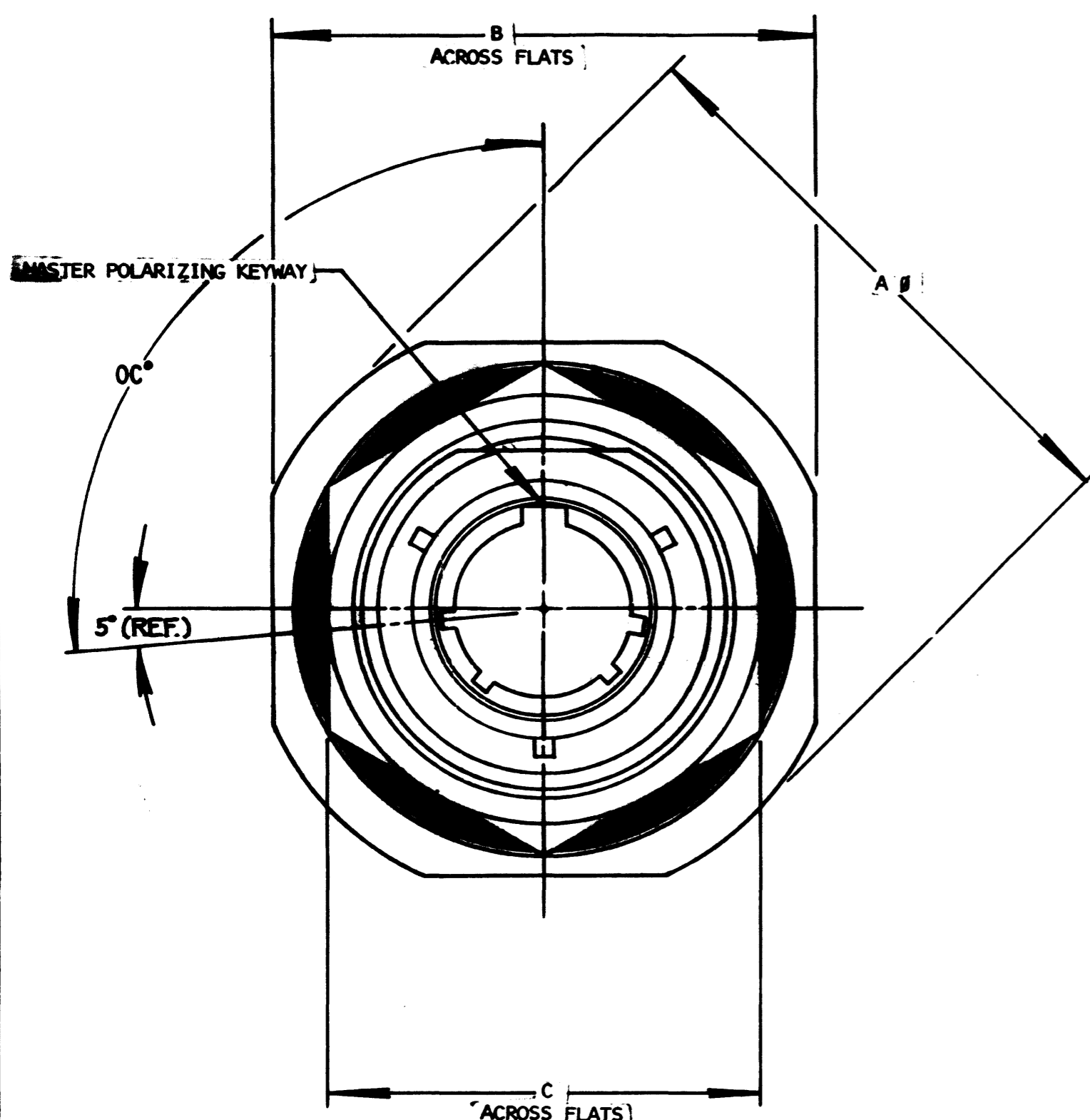


REVISIONS			
REV	DESCRIPTION	DATE	APPROVED
N/C	NEW RELEASE PER E.O. 95713	12-1-82	L. J. Hall
A	REVISED PER E.O. 94017	6-15-83	L. J. Hall
B	REVISED PER E.O. A2286	5-4-84	



SHELL SIZE	ALTERNATE MASTER KEYWAY POSITION OC°				
	N	A	B	C	D
9	95°	77°	-	-	113°
11	95°	81°	67°	123°	109°
13	95°	75°	63°	127°	115°
15	95°	74°	61°	129°	116°
17	95°	77°	65°	125°	113°
19	95°	77°	65°	125°	113°
21	95°	77°	65°	125°	113°
23	95°	80°	69°	121°	110°
25	95°	80°	69°	121°	110°

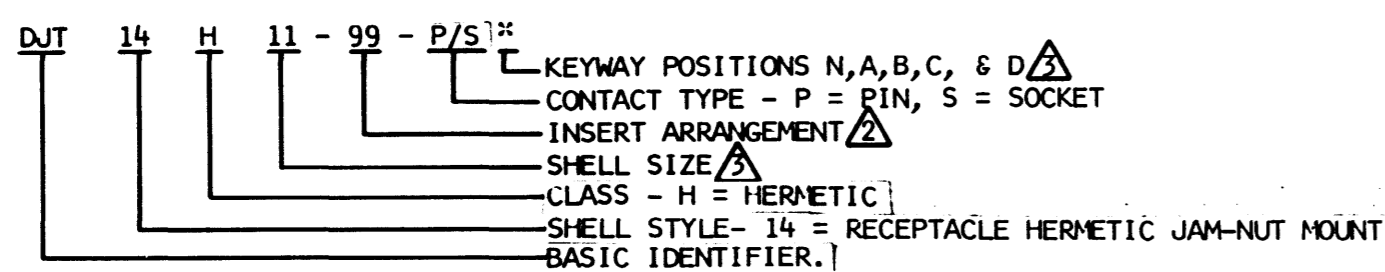
SHELL SIZE	GØ + .010 - .000	H + .000 - .010
9	.697	.669
11	.822	.769
13	1.007	.955
15	1.134	1.084
17	1.259	1.208
19	1.384	1.333
21	1.507	1.459
23	1.634	1.584
25	1.759	1.709

REV	DESCRIPTION
B	DJT14H09-***P/S**

7. MATERIAL:  
SHELL-CARBON STEEL PER QQ-S-637.  
CONTACTS - NICKEL IRON ALLOY.  
Q-RING - FLUID RESISTANT SILICONE ELASTOMER  
JAM NUT-CARBON STEEL PER QQ-S-637
6. FINISH:  
SHELL - TIN PER MIL-T-10727 OVER NICKEL PER QQ-N-290  
JAM NUT - TIN PER MIL-T-10727 OVER NICKEL PER QQ-N-290.  
CONTACTS - GOLD PLATED PER MIL-G-45204, TYPE II, CLASS I OVER NICKEL.

5. THIS CONNECTOR WILL INTERMATE WITH APPLICABLE MIL-C-38999 SERIES I TYPE CONNECTORS.

4. PART NUMBER EXAMPLE:



3. FOR AVAILABLE SHELL SIZES AND ALTERNATE KEYWAY POSITIONS CONSULT THE DEUTSCH COMPANY.
2. FOR INSERT ARRANGEMENT INFORMATION SEE DEUTSCH DRAWING 1225-201-0000.

NOTE: 1. DIMENSIONS ARE IN INCHES UNLESS OTHERWISE SPECIFIED.

SHELL SIZE	PART NUMBER	AØ ± .016	BØ ± .016	CØ + .017 - .016	DØ + .001 - .005	EØ + .011 - .000	F THREAD UNEF-2A
9	DJT14H09-***P/S**	1.188	1.062	.875	.572	.642	.6875-24
11	DJT14H11-***P/S**	1.375	1.250	1.000	.700	.766	.8125-20
13	DJT14H13-***P/S**	1.500	1.375	1.188	.850	.892	1.000-20
15	DJT14H15-***P/S**	1.625	1.500	1.312	.975	1.018	1.125-18
17	DJT14H17-***P/S**	1.750	1.625	1.438	1.100	1.142	1.250-18
19	DJT14H19-***P/S**	1.938	1.812	1.562	1.207	1.268	1.375-18
21	DJT14H21-***P/S**	2.062	1.938	1.688	1.332	1.392	1.500-18
23	DJT14H23-***P/S**	2.188	2.062	1.812	1.457	1.518	1.625-18
25	DJT14H25-***P/S**	2.312	2.188	2.000	1.582	1.642	1.750-18 UNS

SIGNATURE & DATE	
DR	L. J. Hall 12-1-82
CHK	L. J. Hall 12-16-82
PE	L. J. Hall 12-9-82
APPD	

RECEPTACLE,  
HERMETIC, JAM-NUT MOUNTING,  
BAYONET COUPLING,  
SOLDER TERMINATING  
MIL-C-38999 SERIES I

ENVELOPE

CP

**The Deutsch Company**  
ELECTRONIC COMPONENTS DIVISION  
Municipal Airport  
Banning, California

C

DJT14H09-\*\*\*P/S\*\*

DWG CODE