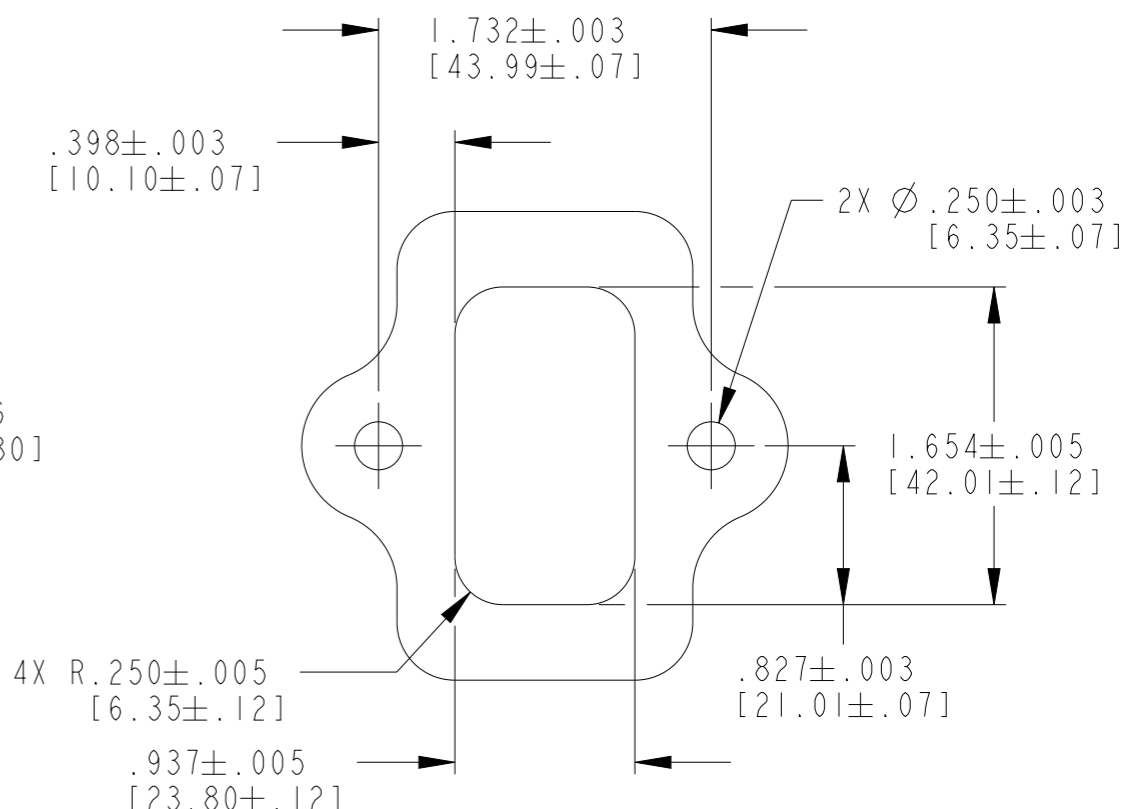
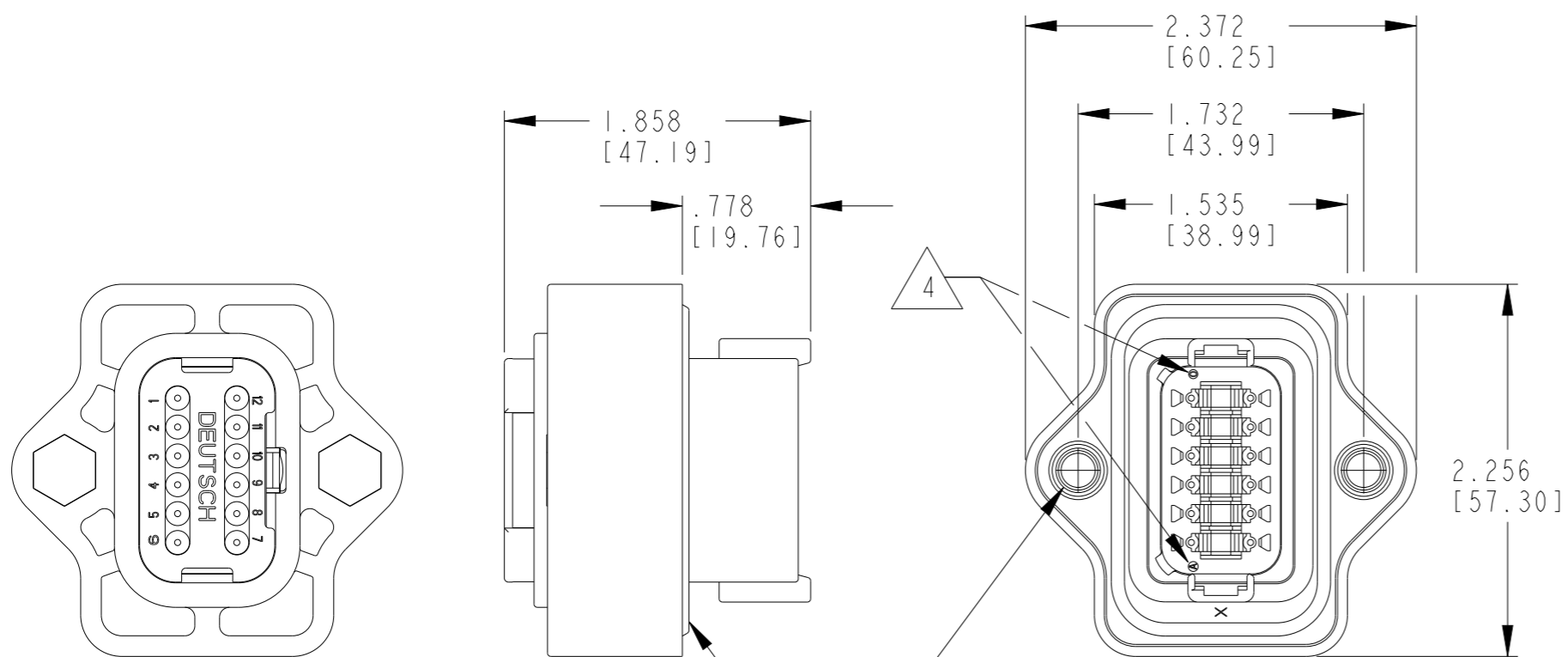


REVISIONS

P	LTR	DESCRIPTION	DATE	DWN	APVD
	A	REVISED PER PCN E-17-012564	28AUG2017	JA	DM
	A1	REVISED PER ECR-22-134367	13JUN2022	DM	IG
	A2	REVISED PER PCN-22-153032	19SEP2022	AM	IG
	B	REVISED PER PCN-23-192205	05FEB2024	RK	CB



FLANGE SEAL IS INTENDED FOR NON-PRESSURIZED FLUID SPLASH ONLY

2X THREADED INSERT
M6 X .500 DEEP
RECOMMENDED TORQUE:
62-88 IN-LB [7-10 N-m]

**RECOMMENDED MOUNTING
DETAIL**

4 DATE CODE: MONTH IS REPRESENTED BY SEQUENTIAL ALPHA CHARACTERS. EX: A = JANUARY, YEAR IS REPRESENTED BY LAST NUMERICAL DIGIT. EX: 0 = 2010

3 MATERIAL: HOUSING,: PA66 GF15 (GRAY)
CAP: PA66 GF15 (BLACK)
GROMMET, GASKET: VMQ (RED-ORANGE)
INSERTS: STAINLESS STEEL

2. THIS RECEPTACLE MATES WITH DT06-12SA-XXXX PLUG.
(XXXX = ALL MODIFICATIONS)
CONSULT FACTORY FOR MODIFICATIONS.

1 FOR CONTACTS AND WIRE PERFORMANCE AND APPLICATION CHARACTERSTICS,
SEE ENVELOPE DRAWING 0425-015-0000.

NOTES: UNLESS OTHERWISE SPECIFIED

TE INTERNAL PN	DEUTSCH PN
DT04-12PA-LE05	DT04-12PA-LE05

CONTACT SIZE	MIN. INSUL. O.D.	MAX. INSUL. O.D.	WIRE RANGE [mm ²] REF ONLY
16	.088 [2.23]	.145 [3.68]	14-20 AWG [2.5-0.5]

THIS DRAWING IS A CONTROLLED DOCUMENT.		DWN C. WOODRUFF	14MARI994		TE TE Connectivity
DIMENSIONS: in [mm]		CHK -	APVD -		
TOLERANCES UNLESS OTHERWISE SPECIFIED:		PRODUCT SPEC 108-151009		NAME 3 WAY RECEPTACLE FLANGE MOUNT DT SERIES	
0 PLC ± 1 PLC ± 2 PLC ± 3 PLC ±.025 [0.64] 4 PLC ±		APPLICATION SPEC 114-151009		SIZE A3	
MATERIAL 3		FINISH		CAGE CODE 4AFU8	
		WEIGHT 73g		DRAWING NO DT04-12PA-LE05	
		CUSTOMER DRAWING		RESTRICTED TO -	
		SCALE 1:1		SHEET 1 OF 1	
				REV B	