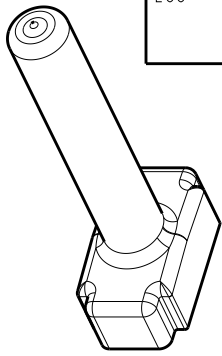
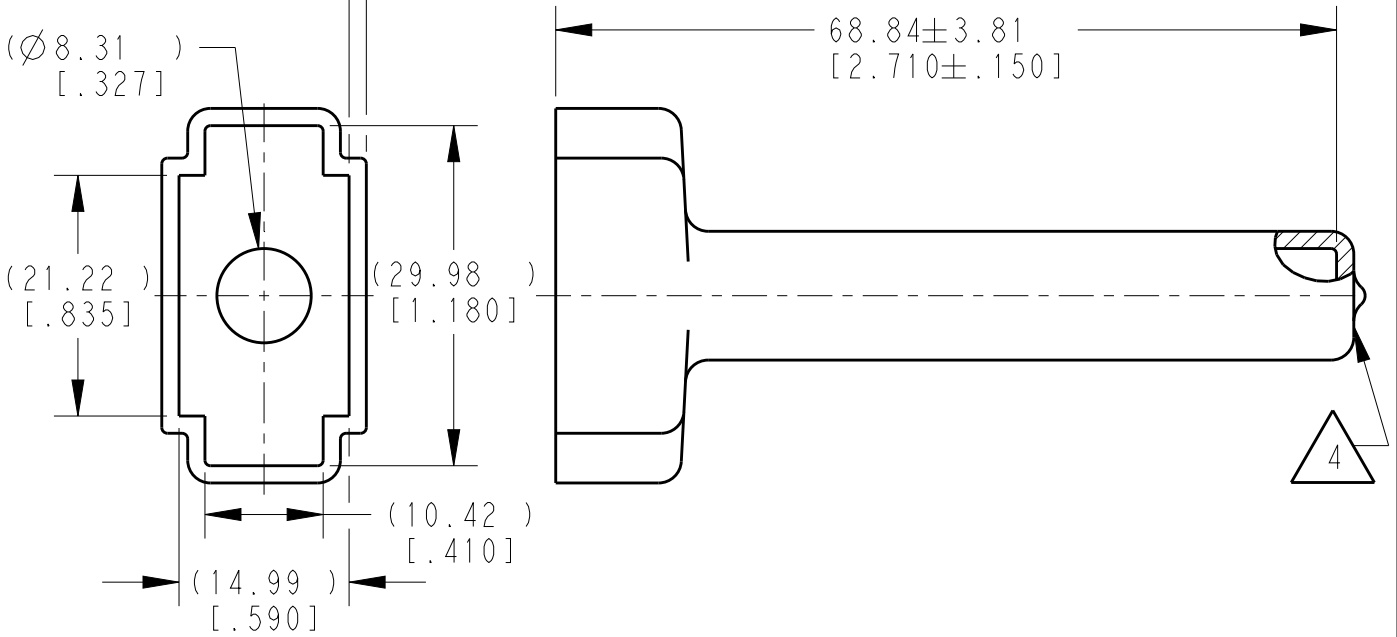


LOC		DIST		REVISIONS			
P	LTR	DESCRIPTION		DATE	DWN	APVD	
	A	NEW RELEASE PER ECO-14-010244		05AUG2014	DM	DM	
	A1	REVISED PER PCN E-19-014639		09OCT2019	JA	IG	



SCALE 3:4

1.52±0.25
 [.060±.010]
 MEASURED 6.35±0.64
 [.250±.025]
 FROM OPEN END



- 4 SMALL MATERIAL EXTENSION IS ACCEPTABLE ON THIS END ALL AROUND.
3. THIS ACCESSORY PART IS PROVIDED WITHOUT TYPICAL TRANSPORTATION INDUSTRY PROCESS CONTROLS. NO VALIDATION TESTING HAS BEEN PERFORMED. CUSTOMER IS RESPONSIBLE FOR DETERMINING PRODUCT PERFORMANCE AND SUITABILITY FOR APPLICATION.
 2. TEMPERATURE RATING: -29°C TO +100°C [-20°F TO +212°F].
 1. THIS PART IS USED ON DTM06-08SX (X=A,B,C,D KEYS) PLUG WITH ANY MODIFICATION THAT DOES NOT INCLUDE AN END CAP.

TE INTERNAL PN	DEUTSCH PN
DTM8S-BT	DTM8S-BT

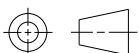
2019 RELEASED FOR PUBLICATION

THIS DRAWING IS UNPUBLISHED. © COPYRIGHT 2014 TE Connectivity. All Rights Reserved.

DIMENSIONS:	
mm	[INCHES]
TOLERANCES UNLESS OTHERWISE SPECIFIED:	
0 PLC	±
1 PLC	±
2 PLC	±
3 PLC	±0.64 [.025]
4 PLC	±
ANGLES	±0°30'0"

DWN	D.MEYER	07JUL2014
CHK	B.MILLIGAN	07JUL2014
APVD	D.MEYER	07JUL2014
PRODUCT SPEC		
APPLICATION SPEC		

MATERIAL	PVC	FINISH	GRAY
NAME		BOOT, PLUG, 8PIN DTM SERIES	
SIZE	CAGE CODE	DRAWING NO	RESTRICTED TO
A4	4AFU8	©-DTM8S-BT	-



WEIGHT	4.99g	CUSTOMER DRAWING	SCALE	3:2	SHEET	1 OF 1	REV	A1
--------	-------	------------------	-------	-----	-------	--------	-----	----