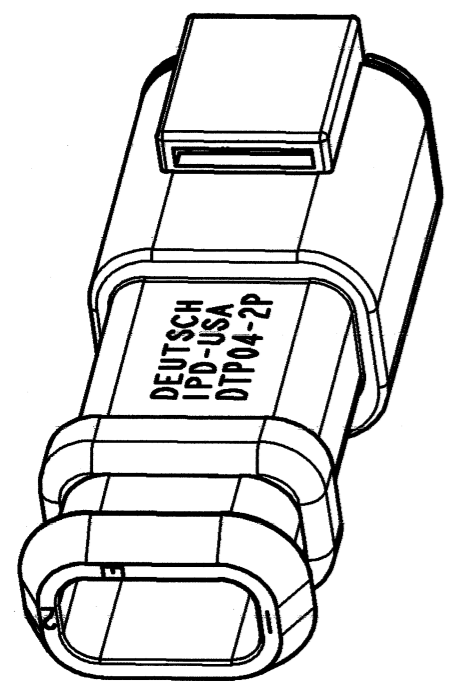
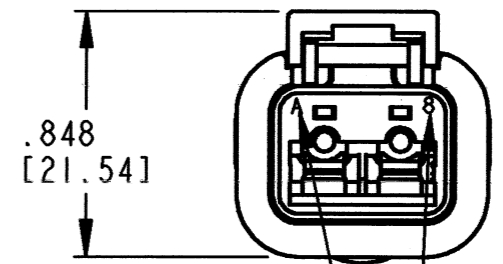
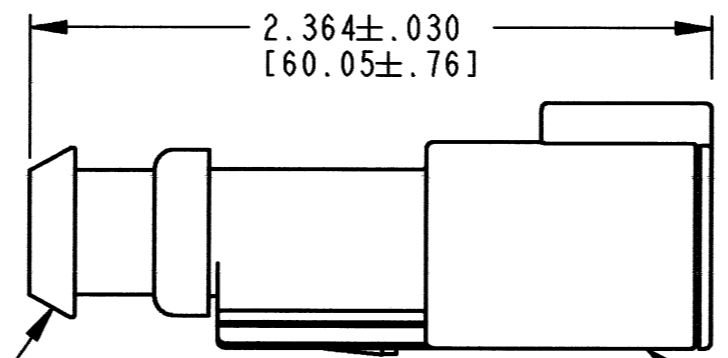
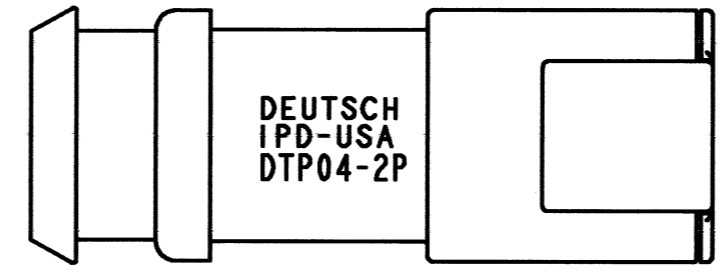
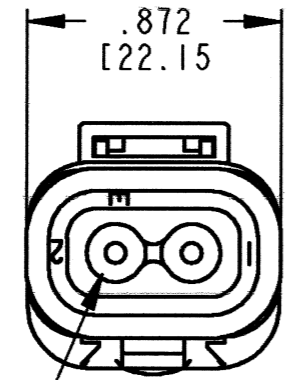


REV  
A DTP04-2P-CE09

REVISIONS			
SYM	DESCRIPTION	DATE	APPROVED
NC	NEW RELEASE PER E.O. PI9839	5/13/08	R.D.R.
A	REVISED PER E.O. P20259	4-16-10	RDR



3D VIEW



7 E-SEAL GROMMET

7 SHRINK BOOT

RECEPTACLE

- 7. PART MODIFICATION: RECEPTACLE IS BLACK, GROMMET IS AN E-SEAL, SHRINK BOOT.
- 6. MATERIAL: HOUSING/SLEEVE: PLASTIC  
GROMMET/SEAL: RUBBER
- 5. CONNECTOR DESIGNED TO BE USED WITH DTP06-2S-\*\*\*\* PLUGS. (\*\*\*\*) = ALL MODIFICATIONS. CONSULT FACTORY FOR MODIFICATIONS.
- 4. FOR CONTACT AND WIRE PERFORMANCE AND APPLICATION CHARACTERISTICS SEE ENVELOPE DRAWING 0425-015-0000.
- 3. SECONDARY WEDGE LOCK SOLD SEPARATELY, WP-2P.
- 2. DIMENSION TOLERANCE: ±.025 [.64].
- 1. DIMENSIONS ARE IN INCHES [mm].

NOTES: UNLESS OTHERWISE SPECIFIED

DATE CODE: MONTH IS REPRESENTED BY SEQUENTIAL ALPHA CHARACTERS. EX: A=JANUARY; YEAR IS REPRESENTED BY LAST NUMERICAL DIGIT. EX: 8=2008

CONTACT SIZE	MIN. INSUL. O.D.	MAX INSUL. O.D.	WIRE RANGE [mm <sup>2</sup> ] REF ONLY
12	.097 [2.46]	.158 [4.01]	12-14 AWG [3.0-2.0]

SIGNATURE & DATE	
DR	P. CARNAHAN 04/21/08
CHK	B. Brown 4/16/10
PE	R. Milligan 3/10/10
APPD	J. Brand 4.15.10
SCALE	NONE WT

RECEPTACLE  
2 CONTACTS, SIZE 12  
COLOR: BLACK, E-SEAL  
-CE09 MOD  
DTP SERIES

ENVELOPE

EP	MATL. CODE
3850 INDUSTRIAL AVE. HEMET, CA 92545	
<b>B</b>	<b>DTP04-2P-CE09</b>
DWG SIZE	CODE 11139 SHEET   OF