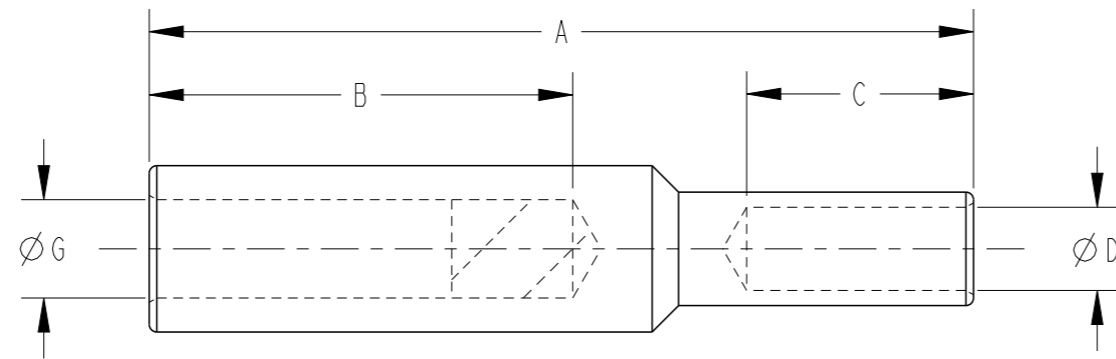


P	LTR	DESCRIPTION	DATE	DWN	APVD
	A	INITIAL RELEASE	01DEC2020	AS	MF

TCPN	CATALOGUE NUMBER	ALUMINIUM					CRIMPING DIE	COPPER				CRIMPING DIE
		CONDUCTOR AREA (mm ²)	STRANDING METRIC	DIMENSIONS (mm)				CONDUCTOR AREA (mm ²)	STRANDING METRIC	DIMENSIONS (mm)		
				A	B	G				C	D	
CG4023-000	BK16-16	16	7/1.70	70	32	5.5	38-90AL	16	7/1.70	21.5	5.5	38-92CU
CG4059-000	BK25-16	25	7/2.14	70	32	7	38-90AL	16	7/1.70	21.5	5.5	38-92CU
CG4034-000	BK25-25	25	7/2.14	70	32	7	38-90AL	25	19/1.35	21.5	7	38-92CU
EE5110-000	BK35-16X01	35		70	32	8.5	38-90AL	16		21.5	5.5	38-77CU
EB0570-000	BK35-16	35	19/1.53	70	32	8.5	38-90AL	16	7/1.70	21.5	5.5	38-92CU
CG4035-000	BK35-25	35	19/1.53	70	32	8.2	38-132AL	25	19/1.35	21.5	7	38-92CU
CG4036-000	BK35-35	35	19/1.35	70	32	8.2	38-132AL	35	19/1.53	21.5	8.5	38-92CU
CN1886-000	BK35-41	35	19/1.35	70	32	8.5	38-132AL	41	19/1.63	22	9	38-92CU
329598-000	BK35-50X06	35	NA	80	32	8	38-132AL	50	NA	32	9.5	38-132CU
451710-000	BK35-95	35	19/1.53	90	32	8.5	38-90AL	95	19/2.52	40	13	38-165CU, 40-165CU
EE5116-000	BK49-35	49	NA	70	32	9.5	38-132AL	35	NA	21.5	8.5	38-92CU
EB0572-000	BK50-16	50	19/1.78	70	32	9.5	38-132AL	16	7/1.70	22	5.5	38-92CU
EF0665-000	BK50-25	50	19/1.78	70	32	9.5	38-132AL	25	7/2.14	21.1	7	38-92CU
CG4037-000	BK50-35	50	19/1.78	70	32	9.5	38-132AL	35	19/1.53	21.5	8.5	38-92CU
CG4038-000	BK50-50	50	19/1.78	70	32	9.5	38-132AL	50	19/1.78	21.5	9.5	38-115CU
E42191-000	BK70-16	70	19/2.14	70	32	11	38-132AL	16	7/1.70	21.5	5.5	38-92CU
D37457-000	BK70-25	70	19/2.14	70	32	11	38-132AL	25	19/1.35	21.5	7	38-92CU
EB0573-000	BK70-35	70	19/2.14	70	32	11	38-132AL	35	19/1.55	21.5	8.5	38-92CU
CG4039-000	BK70-50	70	19/2.14	70	32	11	38-132AL	50	19/1.78	21.5	9.5	38-115CU
CG4040-000	BK70-70	70	19/2.14	70	32	11	38-132AL	70	19/2.14	21.5	11	38-115CU
EE5117-000	BK77-35	77	NA	100	60	12.2	38-173AL, 40-172AL	35	NA	21.5	8.5	38-92CU
EB0574-000	BK95-16	95	19/2.52	100	60	13	38-173AL, 40-172AL	16	7/1.70	21.5	21.5	38-92CU
EB0575-000	BK95-25	95	19/2.52	110	60	13	38-173AL, 40-172AL	25	19/1.35	32	7	38-92CU

THIS DRAWING IS A CONTROLLED DOCUMENT.		DWN A. SAMAL 01DEC2020			NAME BI-METAL CRIMP LINKS		
DIMENSIONS: mm		CHK S. CHAD 01DEC2020					
TOLERANCES UNLESS OTHERWISE SPECIFIED:		APVD M. FRATER 01DEC2020					
0 PLC ± 1 PLC ± 2 PLC ± 3 PLC ± 4 PLC ± ANGLES ±		PRODUCT SPEC -					
MATERIAL -		FINISH -	APPLICATION SPEC -	SIZE A3	CAGE CODE 00779	DRAWING NO E00001134	RESTRICTED TO -
CUSTOMER DRAWING			SCALE NTS	SHEET 1	OF 4	REV A	



REVISIONS					
P	LTR	DESCRIPTION	DATE	DWN	APVD
	-	SEE SHEET 1	-	-	-

TCPN	CATALOGUE NUMBER	ALUMINIUM					CRIMPING DIE	COPPER				CRIMPING DIE
		CONDUCTOR AREA (mm ²)	STRANDING METRIC	DIMENSIONS (mm)				CONDUCTOR AREA (mm ²)	STRANDING METRIC	DIMENSIONS (mm)		
				A	B	G				C	D	
EB0576-000	BK95-35	95	19/2.52	100	60	13	38-173AL, 40-172AL	35	19/1.53	21.5	8.5	38-92CU
EB0577-000	BK95-50	95	19/2.52	100	60	13	38-173AL, 40-172AL	50	19/1.78	21.5	9.5	38-115CU
CG4041-000	BK95-70	95	19/2.52	110	60	13	38-173AL, 40-172AL	70	19/2.14	32	11	38-115CU
CG4042-000	BK95-95	95	19/2.52	120	60	13	38-173AL, 40-172AL	95	37/1.78	40	13	38-165CU, 40-165CU
A47515-000	BK95-210F	95	NA	120	60	13	38-173AL, 40-172AL	210 FLEX	NA	40	21.2	38-231CU, 40-231CU
EE5098-000	BK111-22	111	NA	100	60	14.3	38-173AL, 40-172AL	22	NA	21.5	6.4	38-77CU
EE5099-000	BK111-60	111	NA	100	60	14.3	38-173AL, 40-172AL	60	NA	21.5	10.5	38-115CU
EE5097-000	BK111-134	111	NA	120	60	14.3	38-173AL, 40-172AL	134	NA	21.5	21.5	38-165CU, 40-165CU
EE5100-000	BK120-22	120	NA	100	60	15	38-173AL, 40-172AL	22	NA	21.5	6.4	38-77CU
EB0581-000	BK120-25	120	37/2.03	100	60	15	38-173AL, 40-172AL	25	19/1.35	21.5	7	38-92CU
EE5101-000	BK120-60	120	NA	100	60	15	38-173AL, 40-172AL	60	NA	21.5	10.5	38-115CU
EB0583-000	BK120-70	120	37/2.03	100	60	15	38-173AL, 40-172AL	70	19/2.14	21.5	11	38-115CU
CG4043-000	BK120-95	120	37/2.03	120	60	15	38-173AL, 40-172AL	95	37/1.78	40	13	38-165CU, 40-165CU
CG4044-000	BK120-120	120	37/2.03	120	60	15	38-173AL, 40-172AL	120	37/2.03	40	15	38-165CU, 40-165CU
CA3770-000	BK120-125FX01	120	7/4.75	145	70	15	38-220AL	125 FLEX	NA	55	16.5	38-200CU
EB0584-000	BK120-185	120	37/2.03	120	70	18.5	38-173AL, 40-172AL	185	37/2.52	40	21	38-200CU, 40-200CU
E24109-000	BK120-210F	120	NA	120	60	15	38-173AL, 40-172AL	210 FLEX	NA	40	21.2	38-231CU, 40-231CU
EB0585-000	BK150-25	150	37/2.25	100	60	16.5	38-220AL, 40-220AL	25	7/2.14	21.5	7	38-92CU
CG4045-000	BK150-120	150	37/2.25	120	60	16.5	38-220AL, 40-220AL	120	37/2.03	40	15	38-165CU, 40-165CU
CG4046-000	BK150-150	150	37/2.25	120	60	16.5	38-220AL, 40-220AL	150	37/2.25	40	16.5	38-200CU, 40-200CU
EB0588-000	BK150-185	150	37/2.25	120	60	16.5	38-220AL, 40-220AL	185	37/2.52	40	18.4	38-200CU, 40-200CU
A92175-000	BK180-210F	180	NA	120	60	18	38-220AL, 40-220AL	210 FLEX	NA	40	21.2	38-231CU, 40-231CU
EB0589-000	BK185-25	185	37/2.52	100	60	18.5	38-220AL, 40-220AL	25	7/2.14	21.5	7	38-92CU
EB0590-000	BK185-35	185	37/2.52	100	60	18.5	38-220AL, 40-220AL	35	19/1.53	21.5	8.5	8.5

THIS DRAWING IS A CONTROLLED DOCUMENT.

DIMENSIONS: mm	TOLERANCES UNLESS OTHERWISE SPECIFIED:
	0 PLC ±
	1 PLC ±
	2 PLC ±
	3 PLC ±
	4 PLC ±
	ANGLES ±
MATERIAL	FINISH
-	-

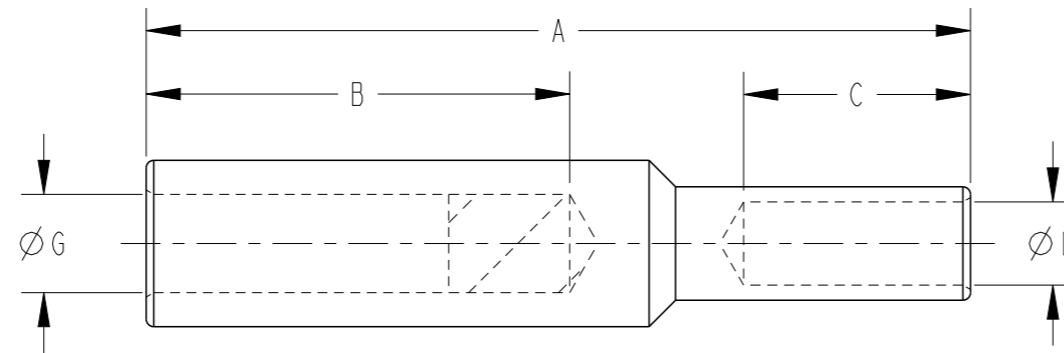
DWN	A. SAMAL	01DEC2020
CHK	S. CHAD	01DEC2020
APVD	M. FRATER	01DEC2020
PRODUCT SPEC	-	-
APPLICATION SPEC	-	-
WEIGHT	-	-
CUSTOMER DRAWING		

TE TE Connectivity

NAME: BI-METAL CRIMP LINKS


SIZE	CAGE CODE	DRAWING NO	RESTRICTED TO
A3	00779	©-E00001134	-

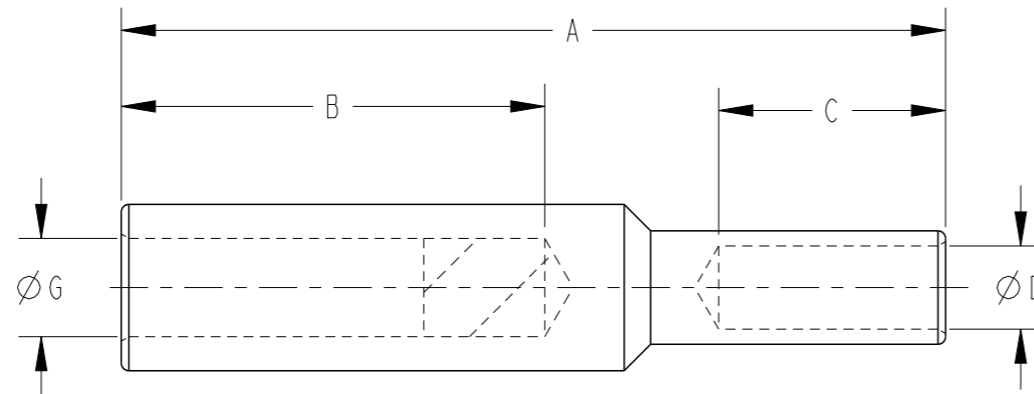
SCALE: NTS SHEET 2 OF 4 REV A



P	LTR	DESCRIPTION	DATE	DWN	APVD
	-	SEE SHEET 1	-	-	-

TCPN	CATALOGUE NUMBER	ALUMINIUM					CRIMPING DIE	COPPER				CRIMPING DIE
		CONDUCTOR AREA (mm ²)	STRANDING METRIC	DIMENSIONS (mm)				CONDUCTOR AREA (mm ²)	STRANDING METRIC	DIMENSIONS (mm)		
				A	B	G				C	D	
EB0591-000	BK185-50	185	37/2.52	100	60	18.5	38-220AL, 40-220AL	50	19/1.78	21.5	9.5	38-115CU
EB0592-000	BK185-70X02	185	37/2.52	120	60	18.5	38-220AL, 40-220AL	70	19/2.14	40	11.5	38-165CU, 40-165CU
EB0593-000	BK185-95	185	37/2.52	120	60	18.5	38-220AL, 40-220AL	95	19/2.52	40	13	38-165CU, 40-165CU
EB0594-000	BK185-120	185	37/2.52	120	60	18.5	38-220AL, 40-220AL	120	37/2.03	40	15	38-165CU, 40-165CU
CG4048-000	BK185-185	185	37/2.52	120	60	18.5	38-220AL, 40-220AL	185	37/2.52	40	18.4	38-200CU, 40-200CU
EB0595-000	BK185-240	185	37/2.52	120	60	18.5	38-220AL, 40-220AL	240	61/2.25	40	21	38-200CU, 40-200CU
EB0596-000	BK193-185	193	NA	120	60	19.2	38-284AL, 40-283AL	185	NA	40	18.4	38-200CU, 40-200CU
EE5105-000	BK210-42	210	NA	100	60	20.5	38-284AL, 40-283AL	42	NA	21.5	8.6	38-104CU
EE5106-000	BK210-60	210	NA	100	60	20.5	38-284AL, 40-283AL	60	NA	21.5	10.5	38-115CU
EE5104-000	BK210-134	210	NA	120	60	20.5	38-284AL, 40-283AL	134	NA	40	15.7	38-165CU, 40-165CU
EB0597-000	BK240-65	240	NA	104	60	21	38-284AL, 40-283AL	65	NA	24	11	38-115CU
EA3784-000	BK240-70	240	61/2.25	105	60	21	38-284AL, 40-283AL	70	19/2.14	24	11	38-165CU, 40-165CU
EB0599-000	BK240-95	240	61/2.25	120	60	21	38-284AL, 40-283AL	95	19/2.52	40	13	38-165CU, 40-165CU
EB0598-000	BK240-97	240	NA	120	60	21	38-284AL, 40-283AL	97	NA	40	13.5	38-165CU
EB0600-000	BK240-120	240	61/2.25	120	60	21	38-284AL, 40-283AL	120	37/2.03	40	15	38-165CU, 40-165CU
EB0602-000	BK240-161	240	61/2.25	120	60	21	38-284AL, 40-283AL	161	37/2.36	40	17	38-200CU, 40-200CU
CG4049-000	BK240-185	240	61/2.25	120	60	21	38-284AL, 40-283AL	185	37/2.52	40	18.4	38-200CU, 40-200CU
CG4050-000	BK240-240	240	61/2.25	120	60	21	38-284AL, 40-283AL	240	61/2.25	40	21	38-260CU, 40-260CU
EB0603-000	BK240-300	240	61/2.25	120	60	21	38-284AL, 40-283AL	300	61/2.52	40	23.5	40-260CU
EB0604-000	BK300-70	300	61/2.52	103	60	23.5	38-284AL, 40-283AL	70	19/2.14	21.5	11	38-115CU
EB0605-000	BK300-95	300	61/2.52	123	60	23.5	38-284AL, 40-283AL	95	19/2.52	40	13	38-165CU, 40-165CU
EB0606-000	BK300-120	300	61/2.52	123	60	23.5	38-284AL, 40-283AL	120	37/2.03	40	15	38-165CU, 40-165CU
EE5107-000	BK300-129	300	NA	120	60	23.5	38-284AL, 40-283AL	129	NA	40	15.5	38-165CU, 40-165CU

THIS DRAWING IS A CONTROLLED DOCUMENT.		DWN A. SAMAL 01DEC2020	 TE Connectivity													
DIMENSIONS: mm		CHK S. CHAD 01DEC2020														
TOLERANCES UNLESS OTHERWISE SPECIFIED:		APVD M. FRATER 01DEC2020	NAME BI-METAL CRIMP LINKS													
<table border="1"> <tr><td>0 PLC</td><td>±</td></tr> <tr><td>1 PLC</td><td>±</td></tr> <tr><td>2 PLC</td><td>±</td></tr> <tr><td>3 PLC</td><td>±</td></tr> <tr><td>4 PLC</td><td>±</td></tr> <tr><td>ANGLES</td><td>±</td></tr> </table>		0 PLC	±	1 PLC	±	2 PLC	±	3 PLC	±	4 PLC	±	ANGLES	±	PRODUCT SPEC -	RESTRICTED TO -	
0 PLC	±															
1 PLC	±															
2 PLC	±															
3 PLC	±															
4 PLC	±															
ANGLES	±															
MATERIAL -		FINISH -	APPLICATION SPEC -	WEIGHT -												
CUSTOMER DRAWING			SIZE A3	CAGE CODE 00779												
SCALE NTS			DRAWING NO E00001134	RESTRICTED TO -												
SHEET 3 OF 4			REV A													



P	LTR	DESCRIPTION	DATE	DWN	APVD
	-	SEE SHEET 1	-	-	-

TCPN	CATALOGUE NUMBER	ALUMINIUM					CRIMPING DIE	COPPER				CRIMPING DIE
		CONDUCTOR AREA (mm ²)	STRANDING METRIC	DIMENSIONS (mm)				CONDUCTOR AREA (mm ²)	STRANDING METRIC	DIMENSIONS (mm)		
				A	B	G				C	D	
EB0607-000	BK300-150	300	61/2.52	118	60	23.5	38-284AL, 40-283AL	150	37/2.25	40	16.5	38-200CU, 40-200CU
EB0608-000	BK300-185	300	61/2.52	118	60	23.5	38-284AL, 40-283AL	185	37/2.52	40	18.4	38-200CU, 40-200CU
E57526-000	BK300-210F	300	NA	120	60	23.5	38-284AL, 40-283AL	210 FLEX	NA	40	21.2	38-231CU, 40-231CU
CG4051-000	BK300-240	300	61/2.52	120	60	23.5	38-284AL, 40-283AL	240	61/2.25	40	21	38-260CU, 40-260CU
CG4052-000	BK300-300	300	61/2.52	120	60	23.5	38-284AL, 40-283AL	300	61/2.52	40	23.5	38-260CU, 40-260CU
EE5108-000	BK323-185	323	NA	120	60	24.2	38-284AL, 40-283AL	185	NA	40	18.4	38-200CU, 40-200CU
EE5109-000	BK337-220	337	NA	120	60	24.5	38-284AL, 40-283AL	220	NA	40	20.6	38-260CU, 40-260CU
EE5114-000	BK400-95	400	61/2.85	135	70	26.5	40-390AL	95	19/2.52	40	13	38-165CU, 40-165CU
EE5111-000	BK400-129	400	NA	135	70	26.5	40-390AL	129	NA	40	15.5	38-165CU, 40-165CU
EE5112-000	BK400-185	400	61/2.85	135	70	26.5	40-390AL	185	37/2.52	40	18.4	38-200CU, 40-200CU
EE5113-000	BK400-240	400	61/2.85	135	70	26.5	40-390AL	240	61/2.25	40	21	38-260CU, 40-260CU
EB0611-000	BK400-300	400	61/2.85	155	70	26.5	40-390AL	300	61/2.52	55	23.5	38-260CU, 40-260CU
279774-000	BK400-400	400	61/2.85	155	70	26.5	40-390AL	400	61/2.85	58	26.5	40-310CU
EE5115-000	BK409-134	409	NA	135	70	26.7	40-390AL	134	NA	40	15.7	38-165CU, 40-165CU
EB0612-000	BK500-185	500	61/3.20	135	70	29.5	40-390AL	185	37/2.52	40	18.4	38-200CU, 40-200CU
EB0613-000	BK500-300	500	61/3.20	138	70	29.5	40-390AL	300	61/2.52	40	23.5	38-260CU, 40-260CU
CG4058-000	BK630-630	630	127/2.52	160	70	33.5	40-432AL	630	127/3.20	60	33.5	40-370CU

THIS DRAWING IS A CONTROLLED DOCUMENT.		DWN A. SAMAL 01DEC2020		
DIMENSIONS: mm		CHK S. CHAD 01DEC2020		
TOLERANCES UNLESS OTHERWISE SPECIFIED:		APVD M. FRATER 01DEC2020	NAME BI-METAL CRIMP LINKS	
		PRODUCT SPEC -	RESTRICTED TO -	
MATERIAL -		FINISH -	APPLICATION SPEC -	SCALE NTS
		WEIGHT -	SIZE A3	CAGE CODE 00779
			DRAWING NO E00001134	SHEET 4 OF 4
			CUSTOMER DRAWING	REV A