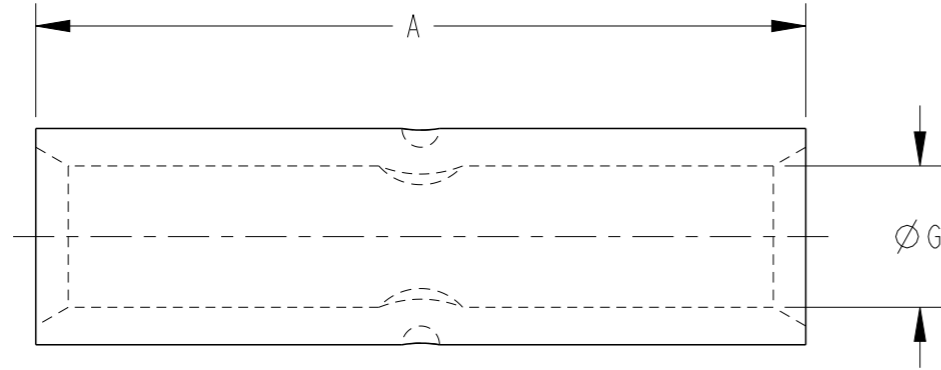


REVISIONS

| P | LTR | DESCRIPTION | DATE | DWN | APVD |
|---|-----|-----------------|-----------|-----|------|
| | A | INITIAL RELEASE | 03DEC2020 | RS | MF |
| | | | | | |
| | | | | | |

PRODUCT SELECTION INFORMATION

| TCPN | CATALOGUE NUMBER | CONDUCTOR AREA (mm ²) | STRANDING METRIC | DIMENSIONS (mm) | | CRIMPING DIE |
|------------|------------------|-----------------------------------|------------------|-----------------|------|--------------------|
| | | | | A | G | |
| 420026-000 | CK0.5 | 0.5 | 1/0.80 | 22 | 2.1 | #00 |
| 466898-000 | CK2.5 | 2.5 | 7/0.67 | 22 | 2.5 | #00 |
| 839458-000 | CK4 | 4 | 7/0.85 | 22 | 3.3 | #00, #18 |
| 193398-000 | CK6 | 6 | 7/1.04 | 22 | 3.7 | 38-44CU |
| 939086-000 | CK10 | 10 | 7/1.35 | 22 | 4.7 | 38-57CU |
| 069592-000 | CK16 | 16 | 7/1.70 | 44 | 5.5 | 38-63CU |
| 991178-000 | CK16 | 16 | 7/1.70 | 44 | 5.5 | 38-63CU |
| 127504-000 | CK20 | 20 | 19/.044 | 44 | 6.3 | 38-70CU |
| 466018-000 | CK25 | 25 | 19/1.35 | 48 | 7.1 | 38-77CU |
| 332440-000 | CK25X01 | 25 | 19/1.35 | 25 | 7.1 | 38-77CU |
| 274142-000 | CK35 | 35 | 19/1.53 | 48 | 8.4 | 38-92CU |
| 420436-000 | CK50 | 50 | 19/1.78 | 48 | 9.5 | 38-104CU |
| 932096-000 | CK50X01 | 50 | 19/1.78 | 20 | 9.4 | 38-104CU |
| 564302-000 | CK70 | 70 | 19/2.14 | 51 | 11 | 38-115CU |
| 279506-000 | CK75 | 75 | 37/0.064 | 51 | 11.8 | 38-130CU |
| 286302-000 | CK95 | 95 | 37/1.78 | 54 | 13.4 | 38-142CU |
| 010080-000 | CK120 | 120 | 37/2.03 | 65 | 15.5 | 38-165CU |
| 211130-000 | CK150 | 150 | 37/2.25 | 65 | 16.3 | 38-183CU |
| 625614-000 | CK160 | 160 | 37/0.093 | 65 | 16.9 | 38-183CU, 40-183CU |
| 978424-000 | CK185 | 185 | 37/2.52 | 65 | 18.4 | 38-200CU |
| 725216-000 | CK240 | 240 | 61/2.25 | 89 | 21.2 | 38-231CU |
| 874934-000 | CK300 | 300 | 61/2.52 | 89 | 23.8 | 38-260CU |
| CA3559-000 | CK300X01 | 300 | 61/2.52 | 75 | 23.8 | 38-260CU |
| 950958-000 | CK400 | 400 | 61/2.85 | 89 | 26.8 | 40-281CU |
| 981336-000 | CK500 | 500 | 61/3.20 | 114 | 30 | 40-310CU |
| 162386-000 | CK630 | 630 | 127/2.52 | 114 | 33.5 | 40-370CU |
| 189518-000 | CK800 | 800 | 127/2.85 | 230 | 39.3 | 40-432CU |



THIS DRAWING IS A CONTROLLED DOCUMENT.

DWN RAVI.S 03DEC2020

CHK S.CHAD 03DEC2020

APVD M.FRATER 03DEC2020

PRODUCT SPEC

APPLICATION SPEC

WEIGHT -

CUSTOMER DRAWING



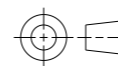
TE Connectivity

NAME COPPER CRIMP LINKS

SIZE A3 CAGE CODE 00779 DRAWING NO. C-E00001143 RESTRICTED TO -

SCALE NTS SHEET 1 OF 1 REV A

DIMENSIONS:
mm



TOLERANCES UNLESS OTHERWISE SPECIFIED:

- 0 PLC ±-
- 1 PLC ±-
- 2 PLC ±-
- 3 PLC ±-
- 4 PLC ±-
- ANGLES ±-
- FINISH -

MATERIAL -

FINISH -