

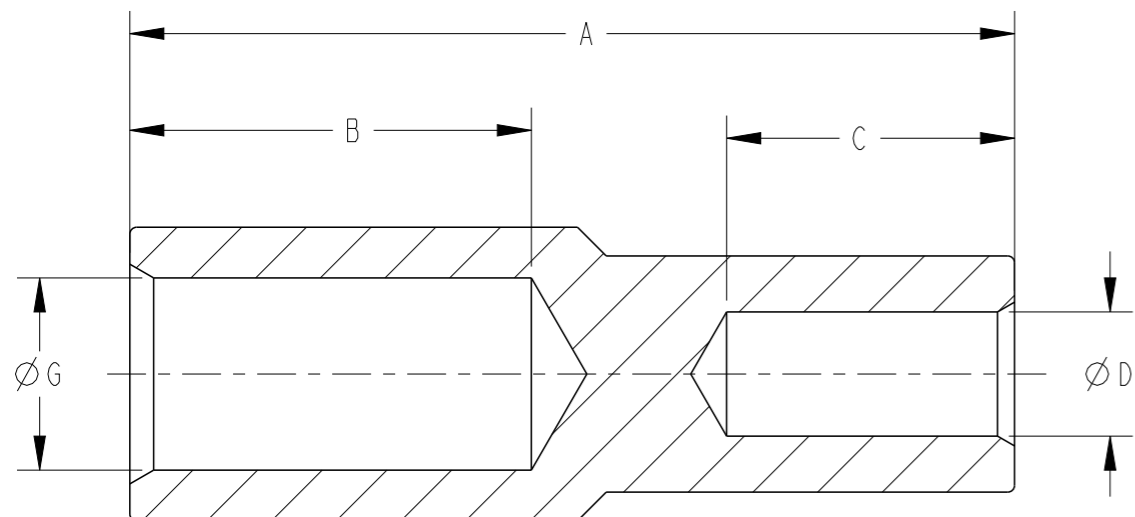
© 2020 TE Connectivity. All Rights Reserved.

REVISIONS

P	LTR	DESCRIPTION	DATE	DWN	APVD
	A	INITIAL RELEASE	03DEC2020	RS	MF

PRODUCT SELECTION INFORMATION

TCPN	CATALOGUE NUMBER	CONDUCTOR AREA (mm ²)	LARGE END				SMALL END		
			DIMENSIONS (mm)			CRIMPING DIE	DIMENSIONS (mm)		CRIMPING DIE
			A	B	G		C	D	
C73715-000	CKR16-6	16 - 6	55	24	5.5	38-63CU	24	3.7	38-44CU
C73740-000	CKR16-10	16 - 10	55	24	5.5	38-63CU	24	4.7	38-57CU
E17469-000	CKR25-6	25 - 6	56	24	7	38-77CU	24	3.7	38-44CU
A31183-000	CKR25-10	25 - 10	56	24	7	38-77CU	24	4.7	38-44CU
A63680-000	CKR25-16	25 - 16	56	24	7	38-77CU	24	5.5	38-63CU
D54006-000	CKR35-10	35 - 10	56	24	8.5	38-92CU	24	4.7	38-57CU
A91122-000	CKR35-16	35 - 16	56	24	8.5	38-92CU	24	5.5	38-63CU
D71435-000	CKR35-25	35 - 25	56	24	8.5	38-92CU	24	7	38-77CU
F94206-000	CKR50-16	50 - 16	58	24	9.4	38-104CU	24	5.5	38-63CU
A97062-000	CKR50-25	50 - 25	58	24	9.4	38-104CU	24	7	38-77CU
D01487-000	CKR50-35	50 - 35	58	24	9.4	38-104CU	24	8.5	38-92CU
A87067-000	CKR70-25	70 - 25	58	24	11	38-115CU	24	7	38-77CU
E88302-000	CKR70-35	70 - 35	58	24	11	38-115CU	24	8.5	38-92CU
C43777-000	CKR70-50	70 - 50	58	24	11	38-115CU	24	9.4	38-104CU
CZ0892-000	CKR85-70FL	85 - 70	60	25	13	38-142CU	24	11.5	38-115CU
E62916-000	CKR95-25	95 - 25	60	25	13.4	38-142CU	24	7	38-77CU
A37955-000	CKR95-35	95 - 35	60	25	13.4	38-142CU	24	8.5	38-92CU
D28278-000	CKR95-50	95 - 50	60	25	13.4	38-142CU	24	9.4	38-104CU
F14287-000	CKR95-70	95 - 70	60	25	13.4	38-142CU	24	11	38-115CU
F01641-000	CKR120-50	120 - 50	75	38	14.7	38-165U	24	9.4	38-104CU
C58176-000	CKR120-70	120 - 70	75	38	14.7	38-165U	24	11	38-115CU
E74129-000	CKR120-95	120 - 95	75	38	14.7	38-165U	25	13.4	38-142CU
CR8334-000	CKR150-35	150 - 35	77	38	16.3	38-183CU	24	8.5	38-92CU
D58277-000	CKR150-70	150 - 70	77	38	16.3	38-183CU	24	11	38-115CU
A37981-000	CKR150-95	150 - 95	77	38	16.3	38-183CU	25	13.4	38-142CU



THIS DRAWING IS A CONTROLLED DOCUMENT.

DWN RAVI.S 03DEC2020

CHK S.CHAD 03DEC2020

APVD M.FRATER 03DEC2020

PRODUCT SPEC

APPLICATION SPEC

WEIGHT -

CUSTOMER DRAWING



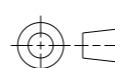
TE Connectivity

NAME COPPER CRIMP REDUCING LINKS

SIZE A3 CAGE CODE 00779 DRAWING NO. C-E00001145 RESTRICTED TO -

SCALE NTS SHEET 1 OF 2 REV A

DIMENSIONS:
mm



TOLERANCES UNLESS OTHERWISE SPECIFIED:

- 0 PLC ±-
- 1 PLC ±-
- 2 PLC ±-
- 3 PLC ±-
- 4 PLC ±-
- ANGLES ±-

MATERIAL -

FINISH -

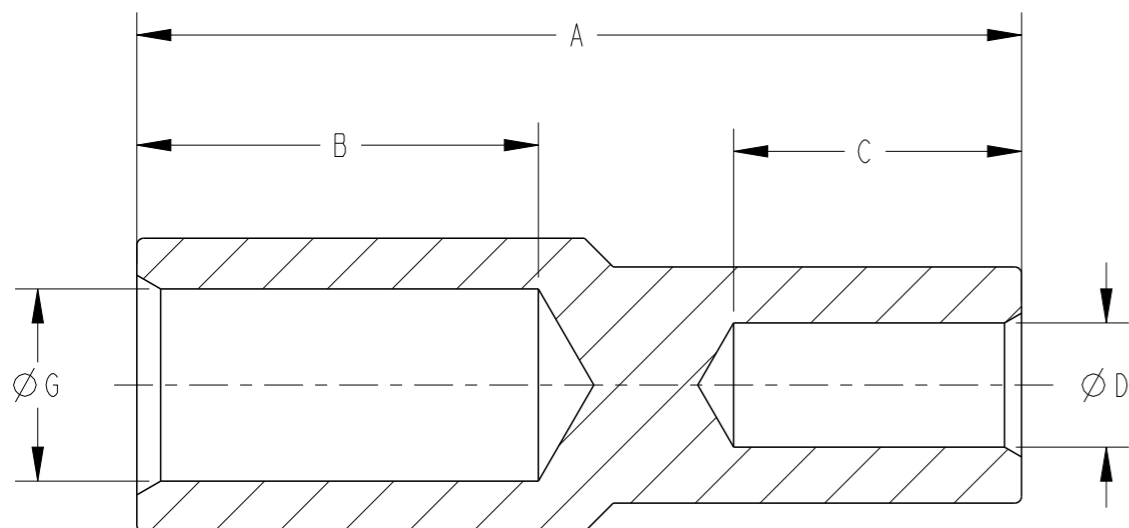
© 2020 TE Connectivity. All Rights Reserved.

REVISIONS

P	LTR	DESCRIPTION	DATE	DWN	APVD
	-	SEE SHEET 1	-	-	-

PRODUCT SELECTION INFORMATION

TCPN	CATALOGUE NUMBER	CONDUCTOR AREA (mm ²)	LARGE END			CRIMPING DIE	SMALL END		CRIMPING DIE
			DIMENSIONS (mm)				DIMENSIONS (mm)		
			A	B	G		C	D	
CL1286-000	CKR150-95X03	150 - 95	80	33	16.3	38-183CU	33	13.4	38-142CU
F94275-000	CKR150-120	150 - 120	90	38	16.3	38-183CU	38	14.7	38-165U
641384-000	CKR185-65	185 - 65	90	38	18.4	38-200CU	38	11	38-115CU
225236-000	CKR185-70	185 - 70	77	38	18.4	38-200CU	24	11	38-115CU
D64054-000	CKR185-95	185 - 95	77	38	18.4	38-200CU	25	13.4	38-142CU
D87363-000	CKR185-120	185 - 120	90	38	18.4	38-200CU	38	14.7	38-165U
D11495-000	CKR185-150	185 - 150	90	38	18.4	38-200CU	38	16.3	38-183CU
437298-000	CKR185-161	185 - 161	90	38	18.4	38-200CU	38	17	40-185CU
CM6113-000	CKR210-105	210 - 105	100	42	20	38-231CU, 40-231CU	42	14	38-183CU, 40-185CU
F27535-000	CKR240-120	240 - 120	98	42	21.1	38-231CU, 40-231CU	38	14.7	38-165U
BM2480-000	CKR240-125F	240 - 125	117	48	21.2	38-231CU, 40-231CU	52	16.5	38-165U
D98239-000	CKR240-150	240 - 150	98	42	21.1	38-231CU, 40-231CU	38	16.3	38-183CU
A51124-000	CKR240-185	240 - 185	98	42	21.1	38-231CU, 40-231CU	38	18.4	38-200CU
D48295-000	CKR300-150	300 - 150	98	42	23.4	38-260CU, 40-260CU	38	16.3	38-183CU
430394-000	CKR300-185	300 - 185	98	42	23.4	38-260CU, 40-260CU	38	18.4	38-200CU
662486-000	CKR300-240	300 - 240	101	42	23.4	38-260CU, 40-260CU	42	21.1	38-231CU, 40-231CU
EA7280-000	CKR500-225	500 - 225	122	59	29.7	40-310CU	42	21.1	38-231CU, 40-231CU
ED4458-000	CKR630-161	630 - 161	122	59	33.4	40-370CU	38	16.9	40-185CU
CF9475-000	CKR630-400	630 - 400	143	59	33.4	40-370CU	59	26.9	40-281CU
CL5180-000	CKR800-630	800 - 630	185	90	39	40-432CU	60	33.5	40-370CU



THIS DRAWING IS A CONTROLLED DOCUMENT.

DWN RAVI.S 03DEC2020
 CHK S.CHAD 03DEC2020
 APVD M.FRATER 03DEC2020



NAME COPPER CRIMP REDUCING LINKS

DIMENSIONS:	TOLERANCES UNLESS OTHERWISE SPECIFIED:
mm	
	0 PLC ±-
	1 PLC ±-
	2 PLC ±-
	3 PLC ±-
	4 PLC ±-
	ANGLES ±-

PRODUCT SPEC -
 APPLICATION SPEC -
 WEIGHT -

SIZE	CAGE CODE	DRAWING NO	RESTRICTED TO
A3	00779	©E00001145	-

MATERIAL - FINISH -

CUSTOMER DRAWING SCALE NTS SHEET 2 OF 2 REV A