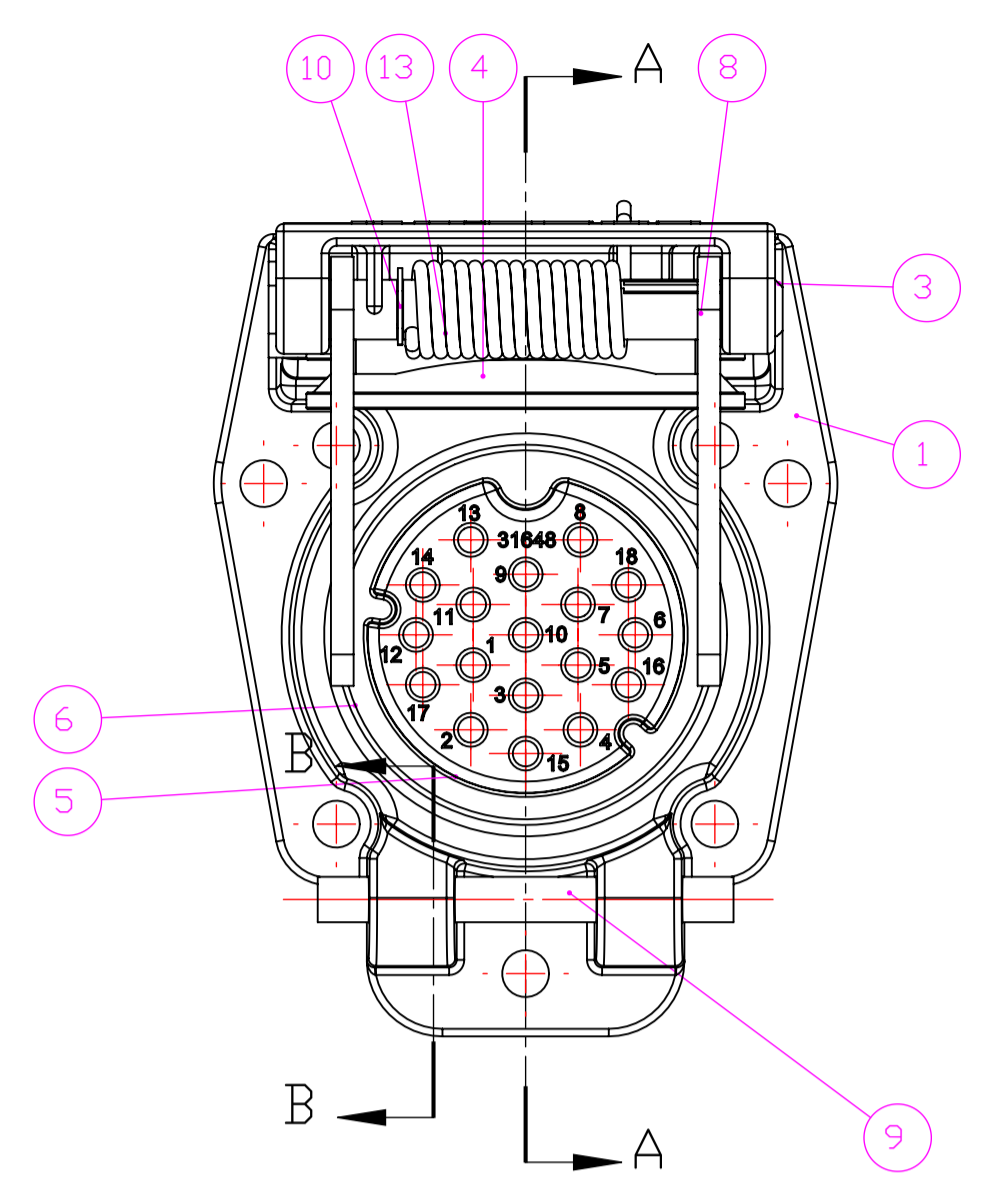
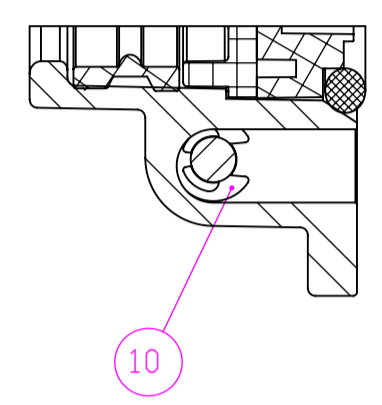
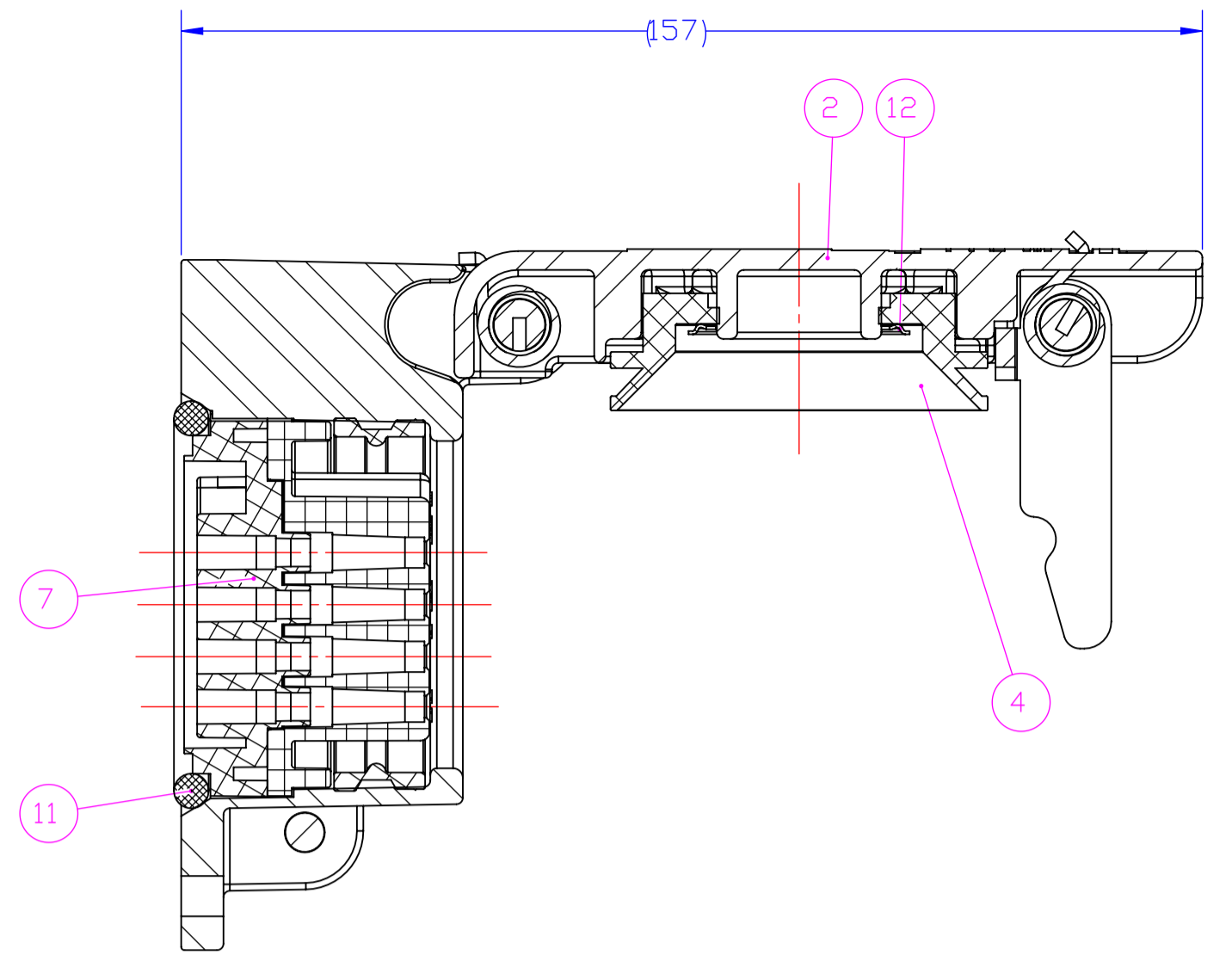


Project NR		REVISIONS			
P	LTR	DESCRIPTION	DATE	IGN	APPR
F		CREATION DU PLAN. N° 332711	07MAR2017	LG	MV

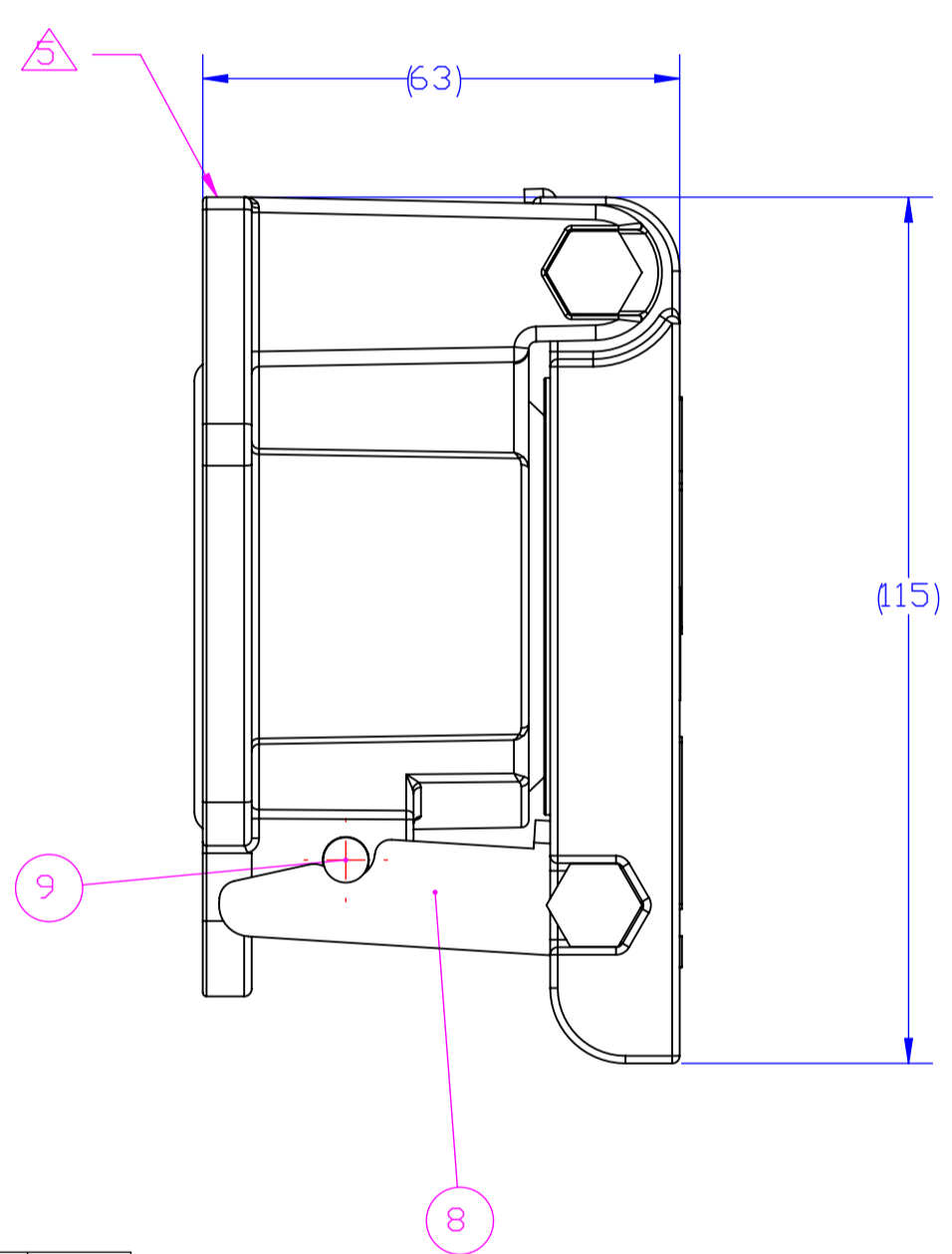
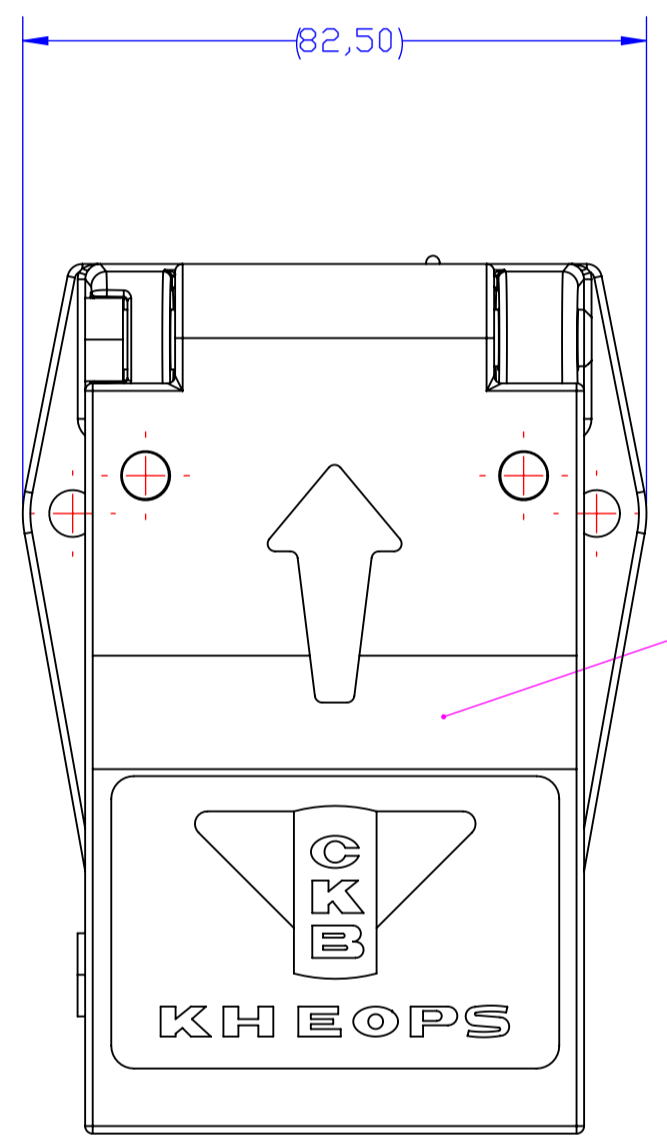
COUPE B-B



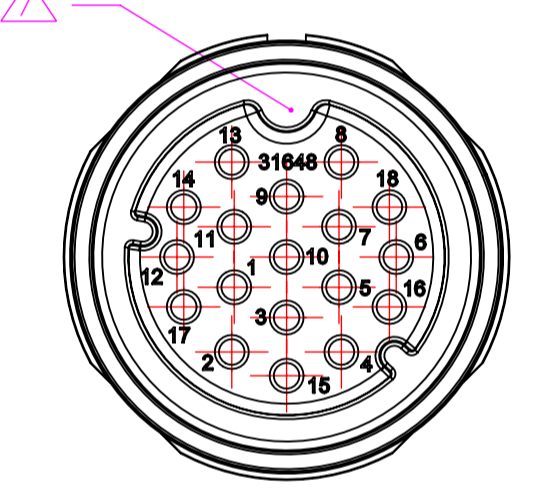
COUPE A-A



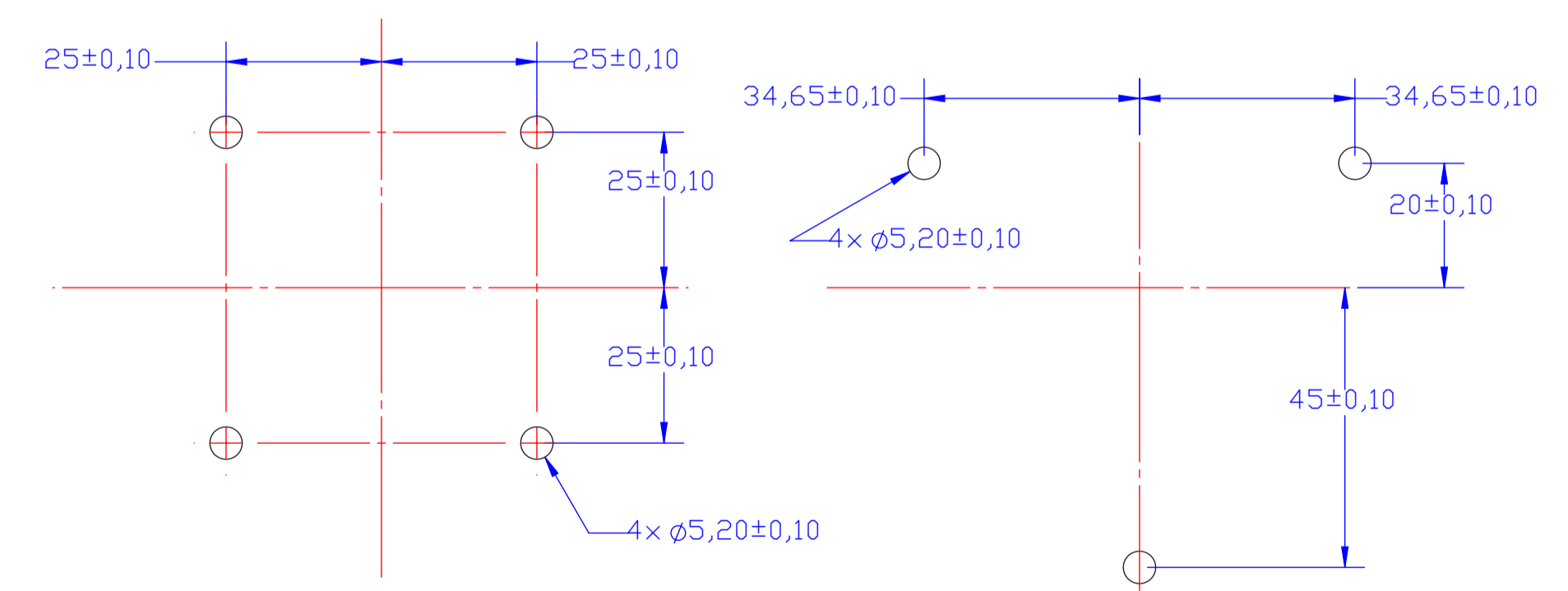
- 1 () : cotes pour information / dimensions for information
 () : cotes de controle / inspection dimensions
- 2 Instructions de mise en oeuvre à appliquer par le client
 Customer instructions to be applied by the customer
- 3 Packaging spec = NA
- 4 Customer manual = NA
- Marquage :
 CKB CSF1680-0003-00000 Année-Semaine
 Marking :
 CKB CSF1680-0003-00000 Year-Week
- Trait de peinture rouge
 Line red paint
- Clavette principale
 Principal key



Vue isolant face avant
View insulator front face



Découpe paroi / Panel cut



Observations/Remarks	Protection/Plating	Fiche matière/Data sheet	Matière/Material	Masse (g)/Weight (g)	Nbr Qty	Codification/Part number	Désignation/Designation	REP Item
-	-	FMME 3034	Inox Steel	11.30	2	19295-000A4	Ressort Spring	13
-	Nickelé Nickel plating	-	Acier Steel	1.39	1	7115/25-34Y	Anneau self locking Self locking ring	12
-	-	-	Elastomère Elastomere	3.81	1	0301-0228AS	Joint torique O ring	11
-	Zingué Zinc plating	-	Acier Steel	0.21	3	7133-06-W	Anneau truarc Truarc ring	10
-	-	FMME 3020	INDX Stainless steel	12.31	1	19208-000A4	Axe d'étrier Clamp axis	9
-	-	FMME 3035	INDX Stainless steel	36.74	1	24337-000A3	Etrier Clamp	8
-	-	FTMP 446	Polyamide Polyamide	39.36	1	31647-000A2	Isolant arriere Rear insulator	7
-	-	FMEL 31014	Elastomère Elastomer	5.47	1	24235-000B3	Joint d'interface Interfacial seal	6
-	-	FTMP 446	Polyamide Polyamide	48.66	1	31648-000A2	Isolant avant Front insulator	5
-	-	FTMP 862	Elastomère Elastomere	14.38	1	24048-000A3	Joint de couvercle Lid gasket	4
-	-	FMME 3020	Inox Stainless steel	24.20	2	19312-000A4	Axe de couvercle Cap axis	3
-	Peinture grise CEA RoHS Grey CEA paint RoHS	FMME 4005	Aluminium Aluminium	152.66	1	Y00000-31644-000Q2	Couvercle Lid	2
-	Peinture grise CEA RoHS Grey CEA paint RoHS	FMME 4005	Aluminium Aluminium	215.78	1	Y00000-31645-000Q2	Embase Socket	1

Référence commerciale / Commercial reference : CSF1680-0003-00000

Y000000-E1680-0003
PART NO

THIS DRAWING IS A CONTROLLED DOCUMENT.

DATE: 06MAR2018
 GLENDINE
 06MAR2018
 JF.GALIPAUD
 06MAR2018
 M.VIMARD
 06MAR2018

TE Connectivity

Boite de repos 18P UIC558
 UIC558 dummy receptacle 18P

SCALE: 1:1 SHEET 1 OF 1 REV F