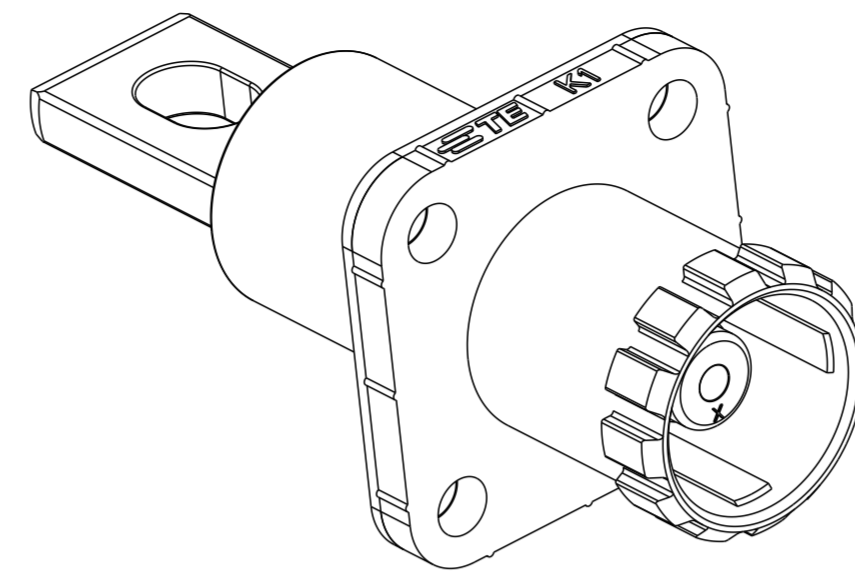
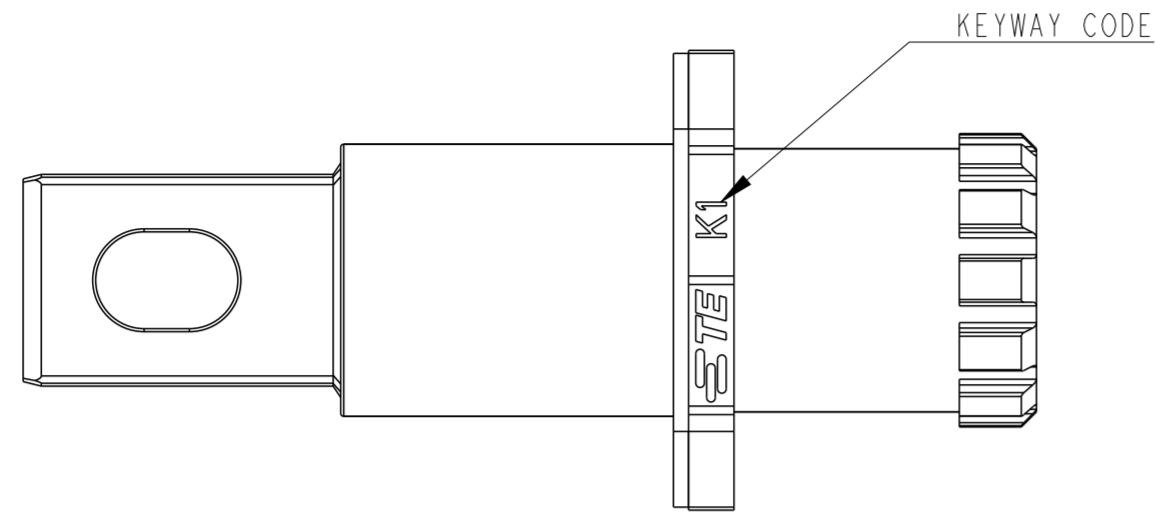


REVISIONS

P	LTR	DESCRIPTION	DATE	DWN	APVD
A		INITIAL RELEASE	28APR2022	AD	CW
A1		ECR-23-185967	04SEP2023	AD	CW
B		ECR-24-201436	25MAR2024	AD	GY

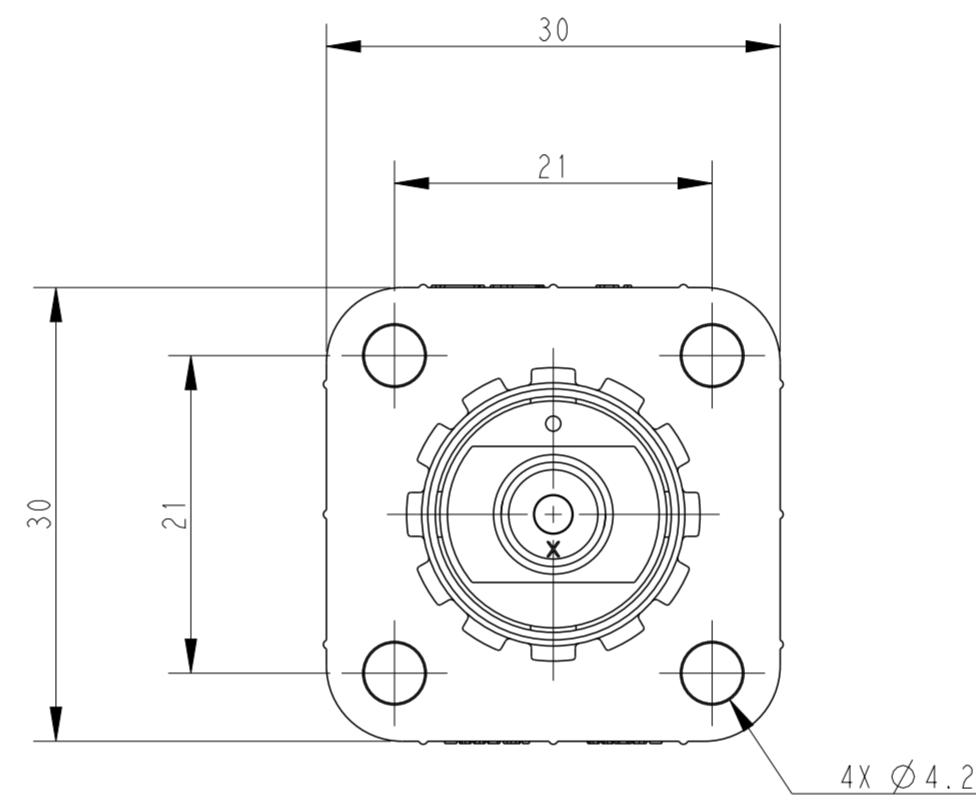
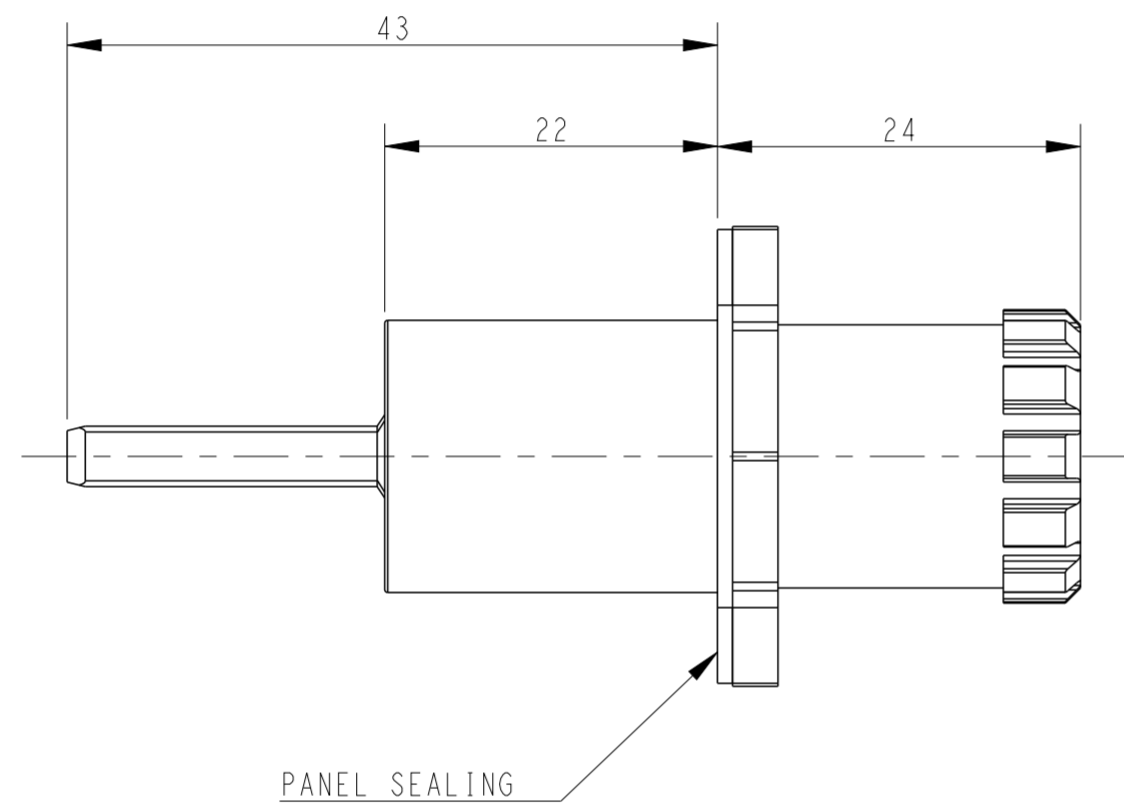


NOTES:

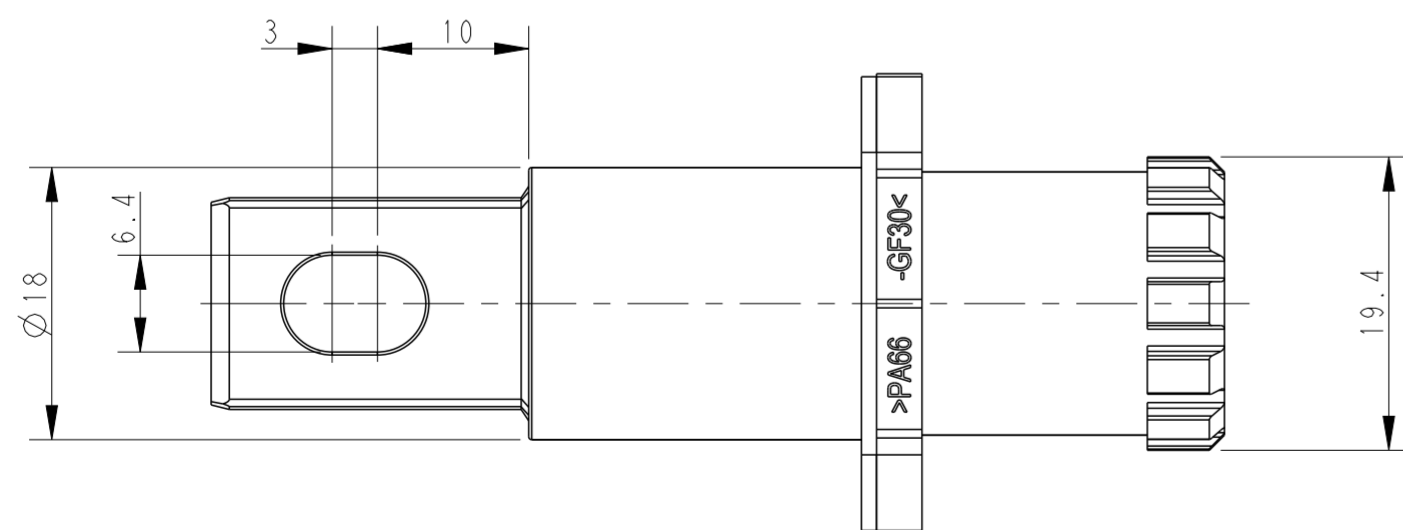
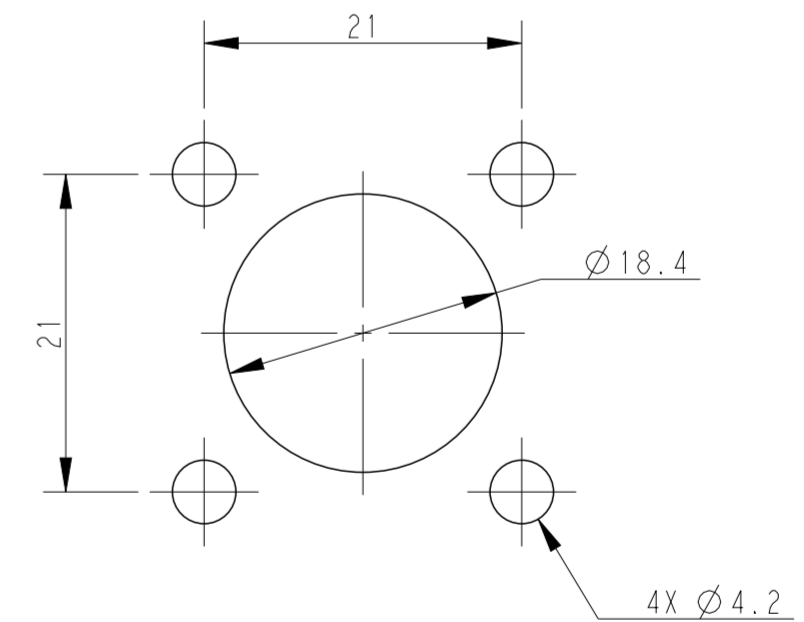
- TECHNICAL CHARACTERISTICS:
 RATED VOLTAGE: 1500V
 RATED CURRENT: 200A/250A
 INSULATION RESISTANCE: >=5000MΩ
 RATED WITHSTAND VOLTAGE: 6.8KV
 POLLUTION DEGREE: 3
 CONTACT RESISTANCE: <0.3mΩ
 PROTECTION CLASS: IP67 (MATED)
 MATING CYCLES: 500 CYCLES
 OPERATION TEMPERATURE: -40°C~+125°C
 COLOR: ORANGE / BLACK

注释:

- 技术参数:
 额定电压: 1500V
 额定电流: 200A/250A
 绝缘电阻: >=5000MΩ
 额定耐电压: 6.8KV
 污染等级: 3
 接触电阻: <0.3mΩ
 防护等级: IP67(配合)
 插拔次数: 500次
 工作温度: -40°C~+125°C
 颜色: 橙色 / 黑色



RECOMMENDED PANEL LAYOUT



H101100030A-000	HPC-200/250-M-R-OR-01	HPC, 200A/250A, MALE RECEPTACLE, ORANGE, SINGLE CONNECTOR HPC, 200A/250A公端插座橙色单芯连接器
H101100130A-000	HPC-200/250-M-R-BK-01	HPC, 200A/250A, MALE RECEPTACLE, BLACK, SIGNLE CONNECTOR HPC, 200A/250A公端插座黑色单芯连接器
PART NUMBER 料号	DESCRIPTION 描述	
THIS DRAWING IS A CONTROLLED DOCUMENT.		DWN Alan Dong 24MAR2022 CHK Gino Yao 24MAR2022 APVD Chris Wang 24MAR2022
DIMENSIONS: mm		NAME HPC-200/250-M-R-XX-01
TOLERANCES UNLESS OTHERWISE SPECIFIED: 0 PLC ± 1 PLC ± 2 PLC ± 3 PLC ± 4 PLC ± ANGLES ± FINISH		PRODUCT SPEC 108-137616 APPLICATION SPEC 114-137616 WEIGHT 51.5 g
MATERIAL	SCALE 2:1	SIZE A2 CAGE CODE 00779 DRAWING NO. C-H101100X30A000 RESTRICTED TO -
	CUSTOMER DRAWING	SHEET 1 OF 1 REV B