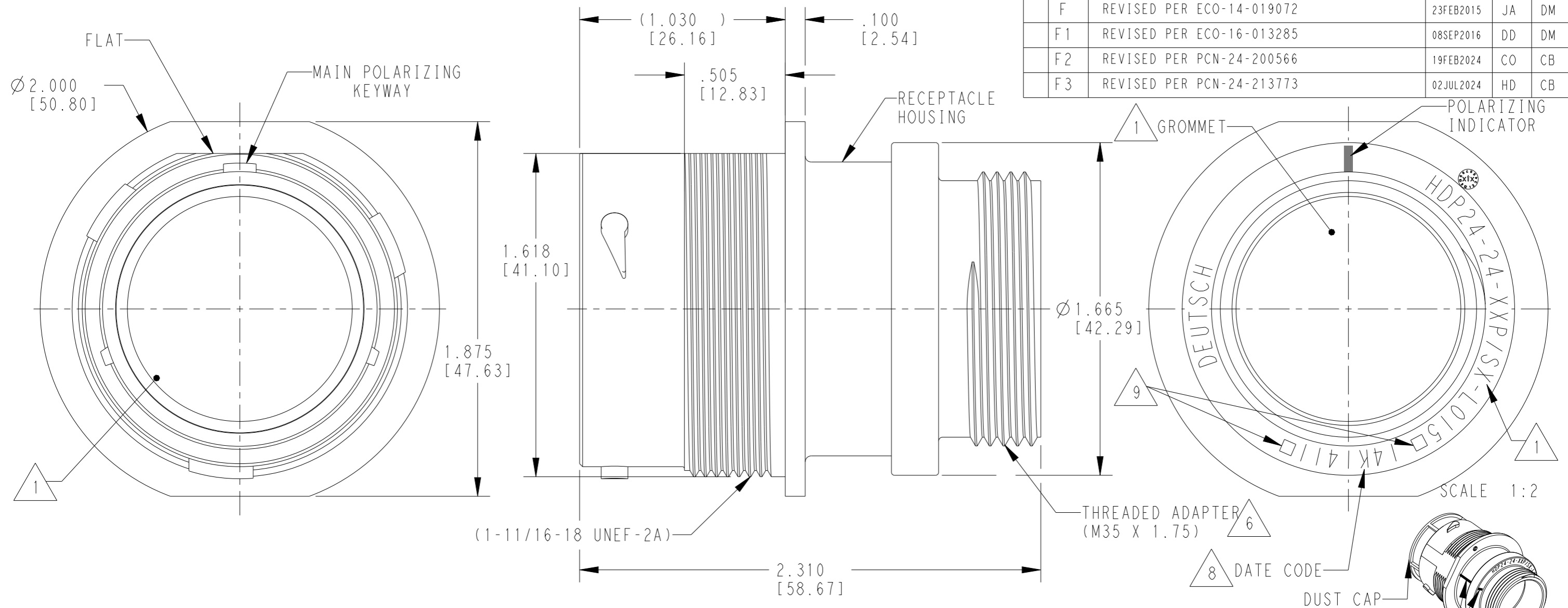


LOC	DIST	REVISIONS			
P	LTR	DESCRIPTION	DATE	DWN	APVD
	F	REVISED PER ECO-14-019072	23FEB2015	JA	DM
	F1	REVISED PER ECO-16-013285	08SEP2016	DD	DM
	F2	REVISED PER PCN-24-200566	19FEB2024	CO	CB
	F3	REVISED PER PCN-24-213773	02JUL2024	HD	CB



5. RECEPTACLE IS SUPPLIED WITH DUST CAP (2415-001-2405).

7. PART MODIFICATION: THREADED ADAPTER

4 MATERIAL: RECEPTACLE HOUSING: PA66 GF10 (BLACK)
 CONDUIT ADAPTER: PA66 GF10 (GREEN, GRAY, BLUE)
 GROMMET: SILICONE (ORANGE-RED)

6 CONDUIT ADAPTER ACCEPTS EITHER TYPES:
 A. CONDUIT ADAPTER CAP NUT (CN21) AND SEAL RING (SRN21)
 B. BACKSHELL (M902-2243) COMPRESSION NUT (M902-2053) CABLE $\phi .430-.570$ [10.92-14.78]
 C. BACKSHELL (M902-2244) COMPRESSION NUT (M902-2054) CABLE $\phi .570-710$ [14.78-18.03]

9 LOCATIONS FOR TRACEABILITY WITNESS MARKS ONLY

8 DATE CODE: IDENTIFIES THE YEAR, MONTH, DAY AND HOUR OF ASSEMBLY.
 YEAR: FIRST AND SECOND DIGITS. (14 = 2014)
 MONTH: THRID DIGIT, EXCLUDING I. A = JAN., B = FEB., C = MARCH... (K = OCTOBER)
 DAY: FOURTH AND FIFTH DIGITS (14 = 14th DAY)
 HOUR: SIXTH AND SEVENTH DIGITS (11 = 11AM)

3 SEE 0425-021-0000 APPLICATION SPECIFICATION
 A. RECOMMENDED WIRE INSULATION RANGE
 B. CONTACT REMOVAL TOOLS
 C. RECOMMENDED MOUNTING HOLE & PANEL THICKNESS
 D. MOUNTING HARDWARE & MOUNTING TORQUE.

2. THIS RECEPTACLE MATES WITH HDP26-24-XXP/SX-XXXX PLUG
 X = SEAL TYPE (N,T,E)
 XX = INSERT ARRANGEMENT
 XXXX = MODIFICATION

1 SEE CUSTOMER DRAWING, 0425-014-2400 FOR AVAILABLE INSERT ARRANGEMENTS AND PART NUMBERS.

NOTES:

THIS DRAWING IS A CONTROLLED DOCUMENT.		DWN	04SEP1997	STEVE BEARD	
DIMENSIONS: INCHES [mm]		CHK	19JUL2002	PAUL BURKE	
TOLERANCES UNLESS OTHERWISE SPECIFIED:		APVD	23JUL2002	STEVE BEARD	
0 PLC ±		PRODUCT SPEC	0425-021-0000		
1 PLC ±		APPLICATION SPEC	3		
2 PLC ±		SIZE	A3	CAGE CODE	4AFU8
3 PLC ±.015 [0.38]		DRAWING NO	HDP24-24-XXP/SX-L015		
4 PLC ±		RESTRICTED TO	-		
ANGLES ±		SCALE	2:1		
FINISH N/A		SHEET	1 OF 1		
MATERIAL		REV	F3		
Customer Drawing					