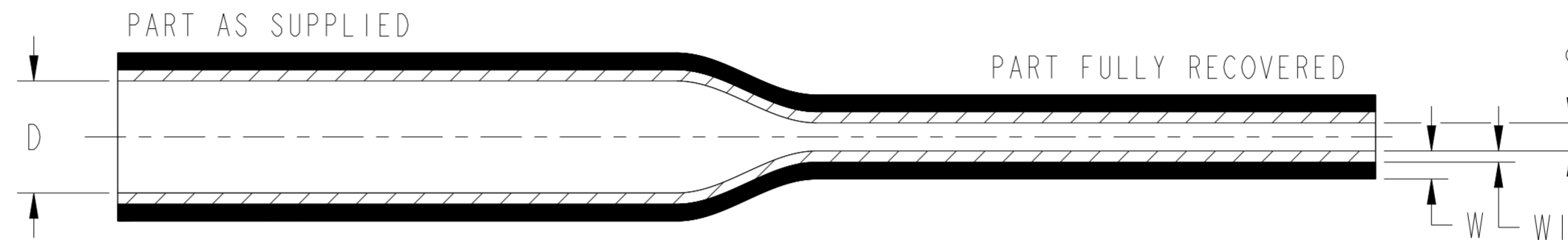
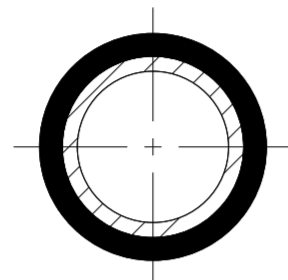


HTAT

DUAL WALL TUBE WITH A 4:1 SHRINK RATIO. A HALOGENATED FLAME RETARDED HEAT SHRINK TUBE WITH AN ADHESIVE LINER DELIVERING AN INCREASED OPERATING TEMPERATURE. TO BE USED FOR INSULATION, PROTECTION AND ENVIRONMENTAL SEALING OF CABLES AND CONNECTORS PRIMARILY FOR AUTOMOTIVE APPLICATIONS.

REVISIONS				
P	LTR	DESCRIPTION	DATE	APVD
B2		REDRAWN PER ECR-22-158635	16OCT2023	BDA MB
B3		REACTIVATION	17OCT2023	BDA MB



PRODUCT DIMENSIONS

HTAT

SIZE	INSIDE DIAMETER AS SUPPLIED (MIN) D		INSIDE DIAMETER AFTER RECOVERY (MAX) d		TOTAL WALL THICKNESS AFTER RECOVERY (NOM) W		WALL THICKNESS TOLERANCE AFTER RECOVERY		INNER MELTABLE WALL THICKNESS AFTER RECOVERY (NOM) WI	
	mm.	in.	mm.	in.	mm.	in.	mm.	in.	mm.	in.
4/1	4.00	.157	1.00	.039	1.00	.039	0.30	.012	0.40	.016
8/2	8.00	.315	2.00	.079	1.00	.039	0.30	.012	0.50	.020
12/3	12.00	.472	3.00	.118	1.40	.055	0.30	.012	0.60	.024
16/4	16.00	.630	4.00	.157	1.80	.071	0.40	.016	0.75	.030
24/6	24.00	.945	6.00	.236	2.25	.089	0.55	.022	0.80	.031
32/8	32.00	1.260	8.00	.315	2.55	.100	0.55	.022	1.00	.039
48/13	48.00	1.890	13.00	.512	2.55	.100	0.55	.022	1.00	.039

PRODUCT INFORMATION

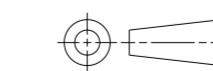
GENERAL USE DUAL WALL POLYOLEFIN WITH MELTABLE ADHESIVE LINER.
 SHRINK RATIO - 4:1
 LONGITUDINAL SHRINKAGE ON FULL RECOVERY 0 TO -20%
 MATERIAL CONFORMS TO TE SPECIFICATION 108-120010
 STANDARD COLOUR: BLACK
 FLAME RETARDANT

TUBING CUT TO SPECIFIC LENGTHS CAN BE SUPPLIED FROM THE PRODUCT SIZES REFERENCED WITHIN THIS DRAWING.

STANDARD CUTTING TOLERANCES (mm)	
CUT LENGTH	TOLERANCE
Up to 9.90mm	±1.50mm
10mm to 24.90mm	±1.50mm
25mm to 54.90mm	±1.50mm
55mm to 99.90mm	±3.00mm
100mm to 149.90mm	±4.00mm
150mm to 499.90mm	±5.00mm
500mm AND GREATER	±25.40mm

THIS DRAWING IS A CONTROLLED DOCUMENT.

DIMENSIONS:
mm (Inches)



MATERIAL
SEE NOTE

TOLERANCES UNLESS OTHERWISE SPECIFIED:
 0 PLC ±.1
 1 PLC ±0.1
 2 PLC ±0.01
 3 PLC ±0.001
 4 PLC ±0.0001
 ANGLES ±
 FINISH -

DWN 18NOV2022
BASAVARAJA D A
 CHK 18NOV2022
SELVAPANDIAN B
 APVD 18NOV2022
NEMEC, VLADIMIR
 PRODUCT SPEC
108-120010
 APPLICATION SPEC
-
 WEIGHT -
 CUSTOMER DRAWING



NAME HTAT-IRRADIATED MODIFIED POLYOLEFIN
 DUAL WALL HEAT SHRINK TUBING

SIZE	CAGE CODE	DRAWING NO	RESTRICTED TO
A2	-	HTAT-STANDARD_SIZES	-
SCALE	NTS	SHEET	OF
		1	1
REV	B3		