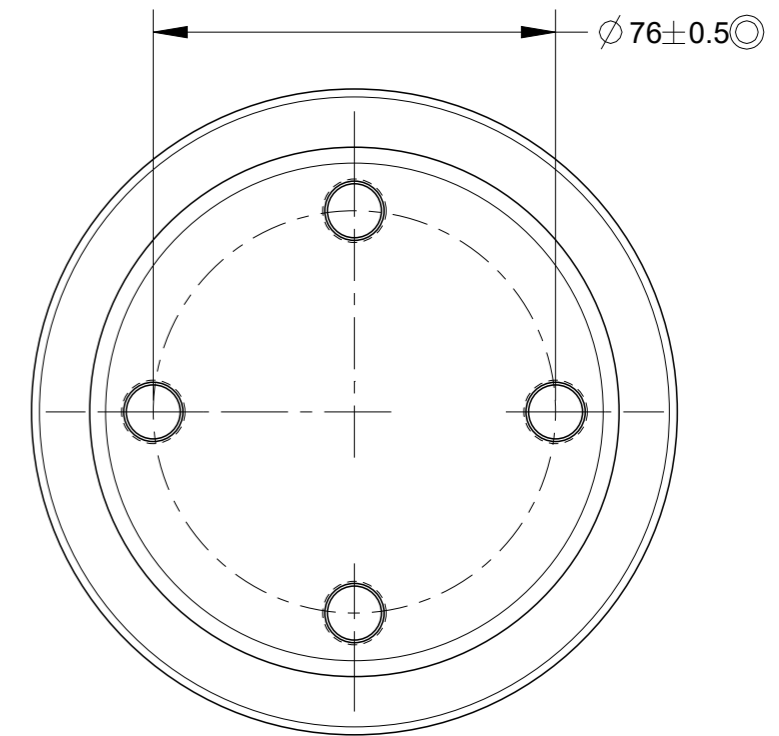
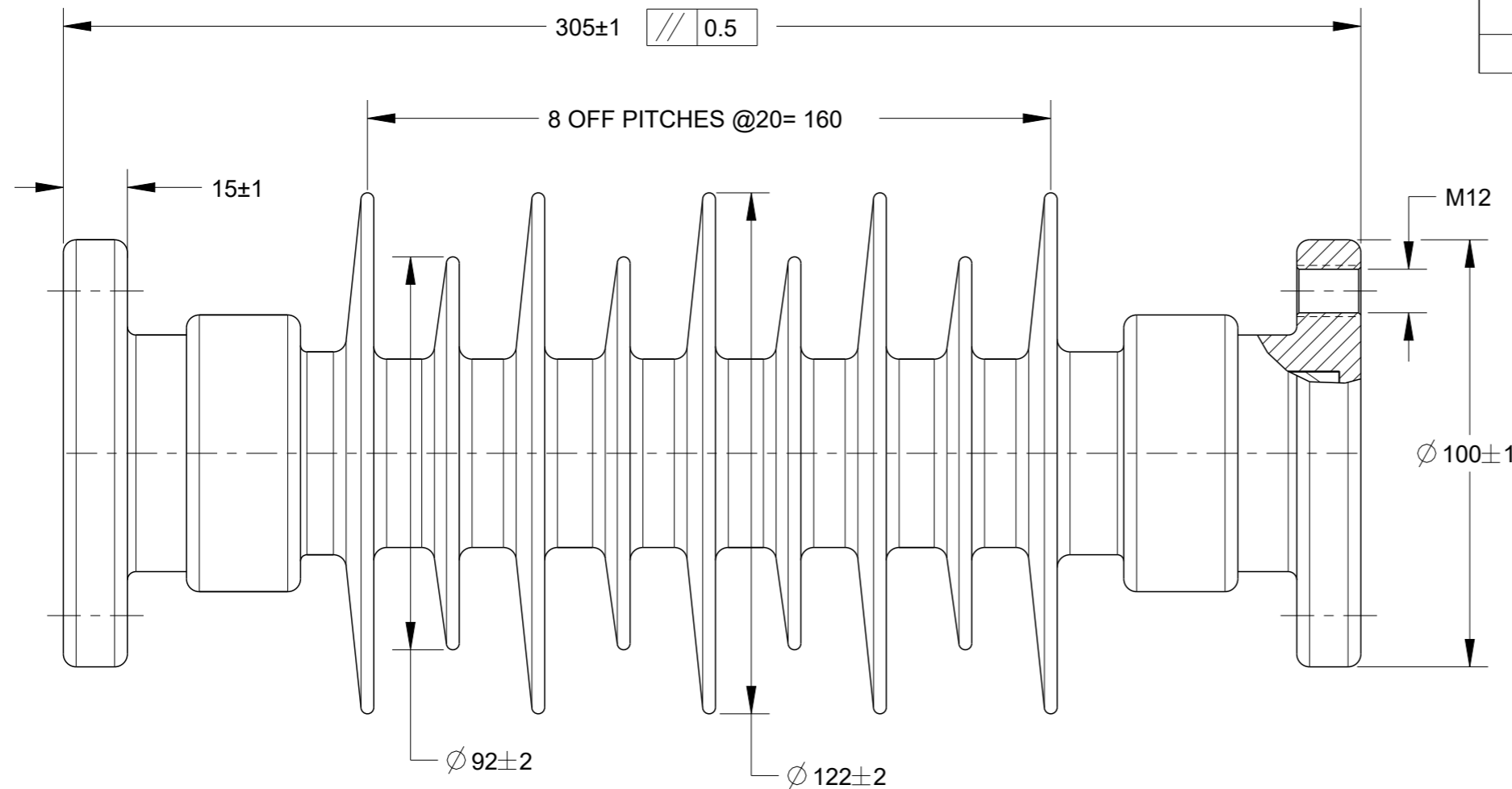


| P | LTR | DESCRIPTION | DATE | DWN | APVD |
|---|-----|---------------------------|-----------|-----|------|
| 5 | | REDRAWN PER ECO-21-004049 | 13OCT2020 | MR | KP |
| | | | | | |
| | | | | | |



ELECTRICAL PROPERTIES :

DRY AC FLASHOVER : 124 kV
 WET AC FLASHOVER : 81 kV
 DRY AC WITHSTAND : 108 kV
 WET AC WITHSTAND : 65 kV
 IMPULSE WITHSTAND BIL : 188 kV

MECHANICAL PROPERTIES :

SCL : 12.5 kN/3.21 kNm
 SCL Min Fl.Ld. 15.8 kN/4.05 kNm
 MDCL : 5.85 kN/1.5 kNm
 STL : 50 kN
 STL Min. Fl. Ld. 105 kN
 MDToL : 731 Nm
 SCoL : 80 kN
 COMPRESSIVE LOAD : 7500 kg

PHYSICAL PROPERTIES :

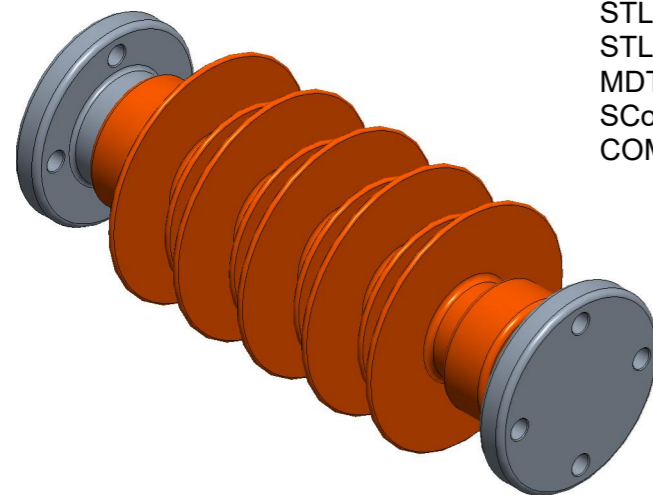
NOMINAL CREEPAGE: 782 MM.
 NOMINAL DRY ARC: 271 MM.
 END FITTING DESIGN: ACC TO IEC 273.
 M12 HOLES TO BE PARALLEL TO WITHIN ±1° TO EACH OTHER.
 BOTH END FITTINGS ARE THE SAME.
 MAXIMUM TORQUE ON SCREWS: 55 Nm
 APPROX WEIGHT OF INSULATOR: 5 kg

MARKING ON MOULDED HOUSING :
 1. RAYCHEM
 2. DATE CLOCKS

MARKING ON END FITTING :
 1.YYWW

MATERIAL :

END FITTING: CAST IRON GALVANISED
 HOUSING: RAYCHEM HV RED (EVA)
 CORE: RBGF



CJ0482-000
 PART NO.

| | | | | | | | | |
|---|--|------------------|-----------|---------------|-------|-----------------------------|------------|---------------|
| THIS DRAWING IS A CONTROLLED DOCUMENT. | | DWN | M.RAJ | 13OCT2020 | | TE Connectivity | | |
| DIMENSIONS: mm | | CHK | K.PUSTHAY | 13OCT2020 | | NAME SP-C12.5-150-768CER | | |
| TOLERANCES UNLESS OTHERWISE SPECIFIED: | | APVD | K.PUSTHAY | 13OCT2020 | | PRODUCT SPEC | | |
| 0 PLC ± 1 PLC ± 2 PLC ± 3 PLC ± 4 PLC ± ANGLES ± | | APPLICATION SPEC | | RESTRICTED TO | | | | |
| MATERIAL SEE NOTES | | FINISH N/A | | WEIGHT | SIZE | CAGE CODE | DRAWING NO | RESTRICTED TO |
| CUSTOMER DRAWING | | | | A3 | 00779 | C=INS0772 | - | |
| | | | | SCALE | NTS | SHEET | 1 OF 1 | REV 5 |