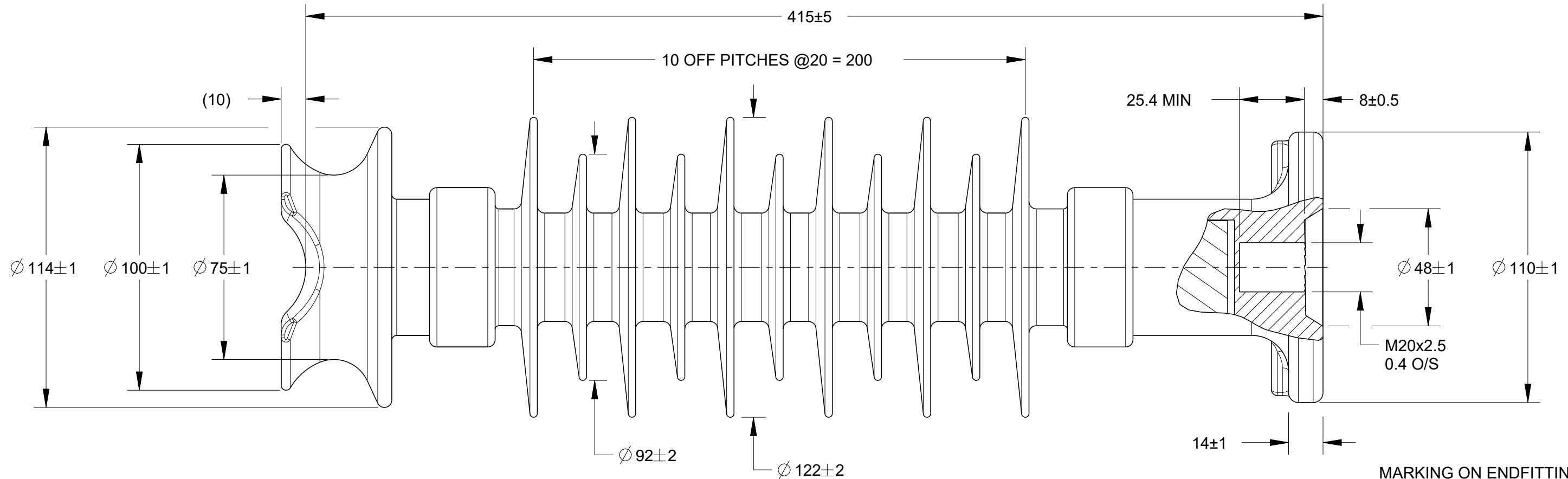


P	LTR	DESCRIPTION	DATE	DWN	APVD
2		REDRAWN PER ECO-21-004049	05OCT2020	MR	KP



ELECTRICAL PROPERTIES :

DRY AC FLASHOVER : 163 kV
 WET AC FLASHOVER : 120 kV
 DRY AC WITHSTAND : 146 kV
 WET AC WITHSTAND : 103 kV
 IMPULSE WITHSTAND VOLTAGE : 219 kV

MECHANICAL PROPERTIES :

SCL : 12.5 kN
 MDCL : 5.5 kN
 STL : 25 kN
 SML : NONE

PHYSICAL PROPERTIES :

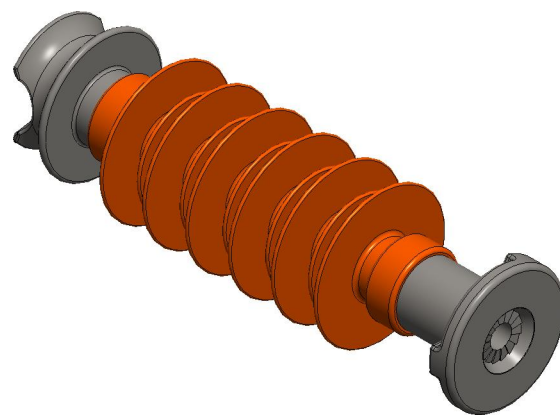
NOMINAL CREEPAGE : 922 MM
 NOMINAL DRY ARC : 300 MM
 END FITTING DESIGN : STANDARD ANSI 29.7 & IEC60720 DESIGN

MATERIAL :

END FITTING : STEEL GALVANISED
 HOUSING : RAYCHEM HV RED (EVA)
 CORE : RBGF

MARKING ON ENDFITTING
 1. INS0987
 2. MDCL : 5.5kN
 3. RYC

DIFFERENT THREAD TYPES AVAILABLE
 STANDARD PINS SUPPLIED ON REQUEST



CN5209-000
 PART NO.

THIS DRAWING IS A CONTROLLED DOCUMENT.		DWN M.RAJ 05OCT2020		
DIMENSIONS: mm		CHK K.PUSTHAY 05OCT2020		
TOLERANCES UNLESS OTHERWISE SPECIFIED:		APVD K.PUSTHAY 05OCT2020	NAME RLP-36R-FG-M20NPG-M-0.4OS	
0 PLC ±		PRODUCT SPEC	SIZE A3	
1 PLC ±		APPLICATION SPEC	CAGE CODE 00779	DRAWING NO C-INS0987
2 PLC ±		WEIGHT	RESTRICTED TO -	
3 PLC ±		MATERIAL SEE NOTES	SCALE NTS	SHEET 1 OF 1
4 PLC ±			CUSTOMER DRAWING	REV 2
ANGLES ±		FINISH N/A		