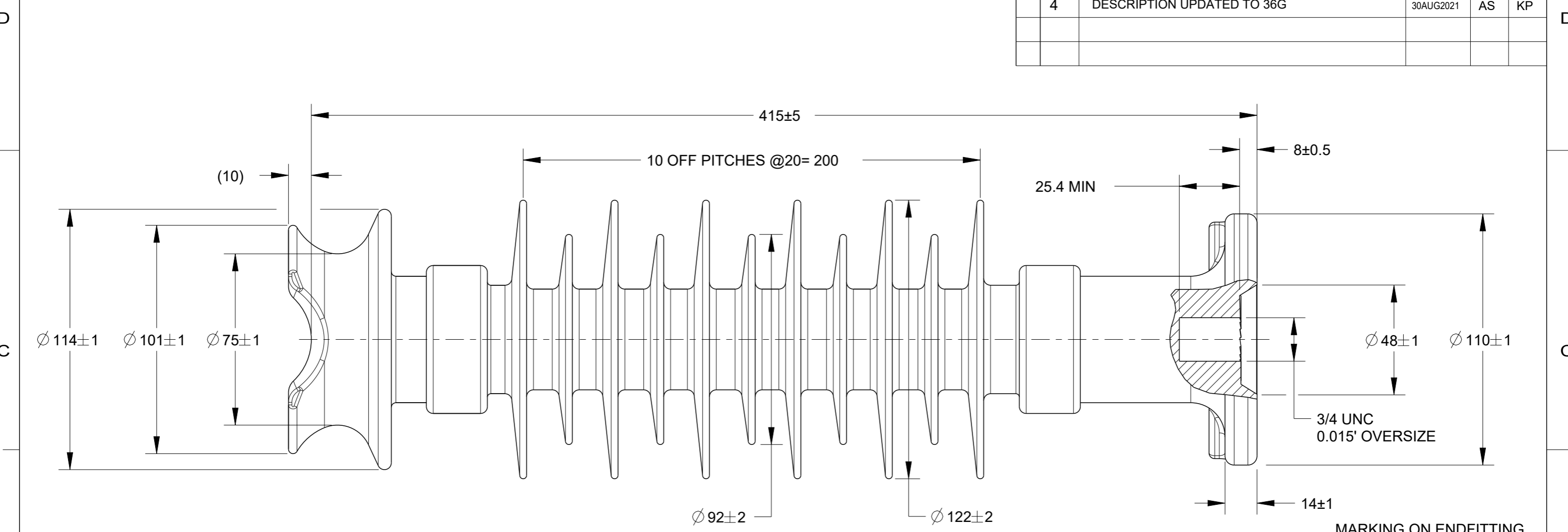


© 2020 TE Connectivity. All Rights Reserved.

REVISIONS					
P	LTR	DESCRIPTION	DATE	DWN	APVD
3		REDRAWN PER ECO-21-004049	15OCT2020	MR	KP
4		DESCRIPTION UPDATED TO 36G	30AUG2021	AS	KP



**ELECTRICAL PROPERTIES :**

DRY AC FLASHOVER : 163 kV  
 WET AC FLASHOVER : 120 kV  
 DRY AC WITHSTAND : 146 kV  
 WET AC WITHSTAND : 103 kV  
 IMPULSE WITHSTAND VOLTAGE : 219 kV

**MECHANICAL PROPERTIES :**

SCL : 12.5 kN  
 MDCL : 5.5 kN  
 STL : 25 kN  
 SML : NONE

**PHYSICAL PROPERTIES :**

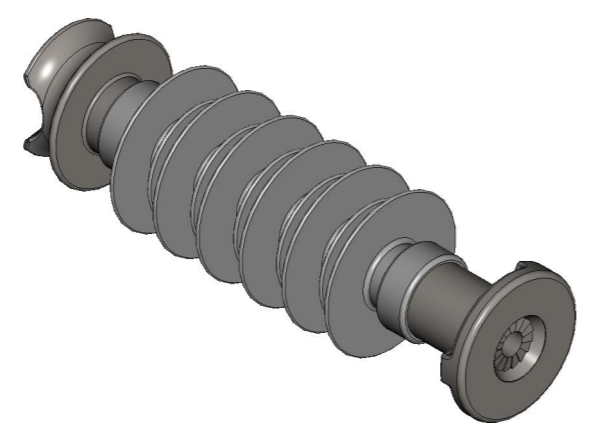
NOMINAL CREEPAGE : 922 MM  
 NOMINAL DRY ARC : 300 MM  
 END FITTING DESIGN : STANDARD ANSI 29.7 & IEC60720 DESIGN

**MATERIAL :**

END FITTING : FORGED/MACHINED ALUMINIUM ON TOP END FITTING  
 CAST STEEL ON BOTTOM END FITTING  
 HOUSING : RAYCHEM HV GREY (EVA)  
 CORE : RBGF

**MARKING ON ENDFITTING**  
 1. INS1179  
 2. MDCL : 5.5kN  
 3. RYC

DIFFERENT THREAD TYPES AVAILABLE  
 STANDARD PINS SUPPLIED ON REQUEST



CR7139-000  
 PART NO.

THIS DRAWING IS A CONTROLLED DOCUMENT.		DWN	M.RAJ	15OCT2020		TE Connectivity	NAME	RLP-36G-FA-3/4-NPG-M01	RESTRICTED TO	-
DIMENSIONS:		CHK	K.PUSTHAY	15OCT2020						
mm		APVD	K.PUSTHAY	15OCT2020						
TOLERANCES UNLESS OTHERWISE SPECIFIED:		PRODUCT SPEC								
0 PLC ±		APPLICATION SPEC			SIZE	CAGE CODE	DRAWING NO	RESTRICTED TO		
1 PLC ±					A3	00779	C=INS1179			
2 PLC ±					CUSTOMER DRAWING					
3 PLC ±					SCALE NTS SHEET 1 OF 1 REV 4					
4 PLC ±										
ANGLES ±										
FINISH										
SEE NOTES										
N/A										