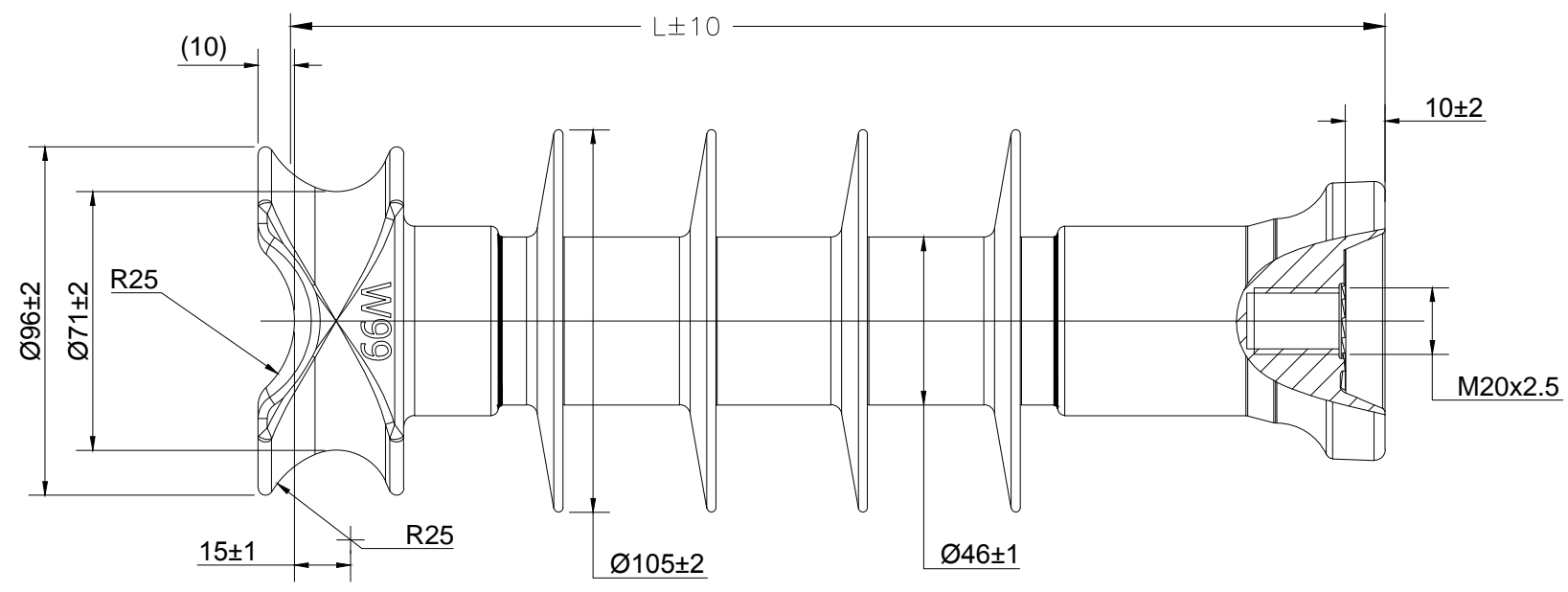


THIS DRAWING IS UNPUBLISHED. RELEASED FOR PUBLICATION
 © COPYRIGHT - TE Connectivity Ltd. ALL RIGHTS RESERVED.

REVISIONS				
P	LTR	DESCRIPTION	DATE	APVD
	A	ORIGINAL ISSUE	20MAR2020	GR KP



NOTES:

- 1) UNSPECIFIED TOLERANCE
 $\pm(0.04 \times d + 1.5)$ mm WHEN $d < 300$ mm
 $\pm(0.025 \times d + 6)$ mm WHEN $d > 300$ mm
 WITH MAX. TOLERANCE OF ± 50 mm


PRODUCT MARKINGS:

- 1. DATE DIAL
- 2. TE LOGO
- 3. SCL XX kN
- 4. BATCH NO #

MATERIALS:

- 1. CORE : ECR FIBERGLASS REINFORCED POLYMER
- 2. HOUSING : SILICONE RUBBER
- 3. END FITTINGS : HOT DIP GALVANISED STEEL
- 4. TEST STANDARDS : IEC 61109 & IEC 61952

TCPN	Description	Creepage distance (mm)	Dry arc distance (mm)	No. of Sheds	Dry FO (kV)	Dry withstand (kV)	Wet FO (kV)	Wet withstand (kV)	Imp FO (+ve) (kV)	Imp W/S (+ve) (kV)	SCL (kN) (kV)	STL (kN) (kV)	Section Length L(mm)	APPROX WEIGHT (kg)
EP4976-000	CLP-15-FM20-140-370-M	370	180	4	90	75	65	55	145	140	15	25	300	3.1

THIS DRAWING IS A CONTROLLED DOCUMENT.		DWN GHANSHYAM 20MAR2020	 TE Connectivity	
DIMENSIONS: mm [INCHES]		CHK RAJESH 20MAR2020		
TOLERANCES UNLESS OTHERWISE SPECIFIED:		APVD K PUSTHAY 20MAR2020	NAME: GENERIC LINE POST SERIES -38.1mm FRP	
0 PLC ± - 1 PLC ± - 2 PLC ± - 3 PLC ± - 4 PLC ± - ANGLES ± -		PRODUCT SPEC	-	
MATERIAL		APPLICATION SPEC	-	
FINISH		WEIGHT	SIZE: A3	CAGE CODE: 00779
			DRAWING NO: C-INS1783	RESTRICTED TO: -
CUSTOMER DRAWING			SCALE: NTS	SHEET: 1 OF 1
			REV: A	