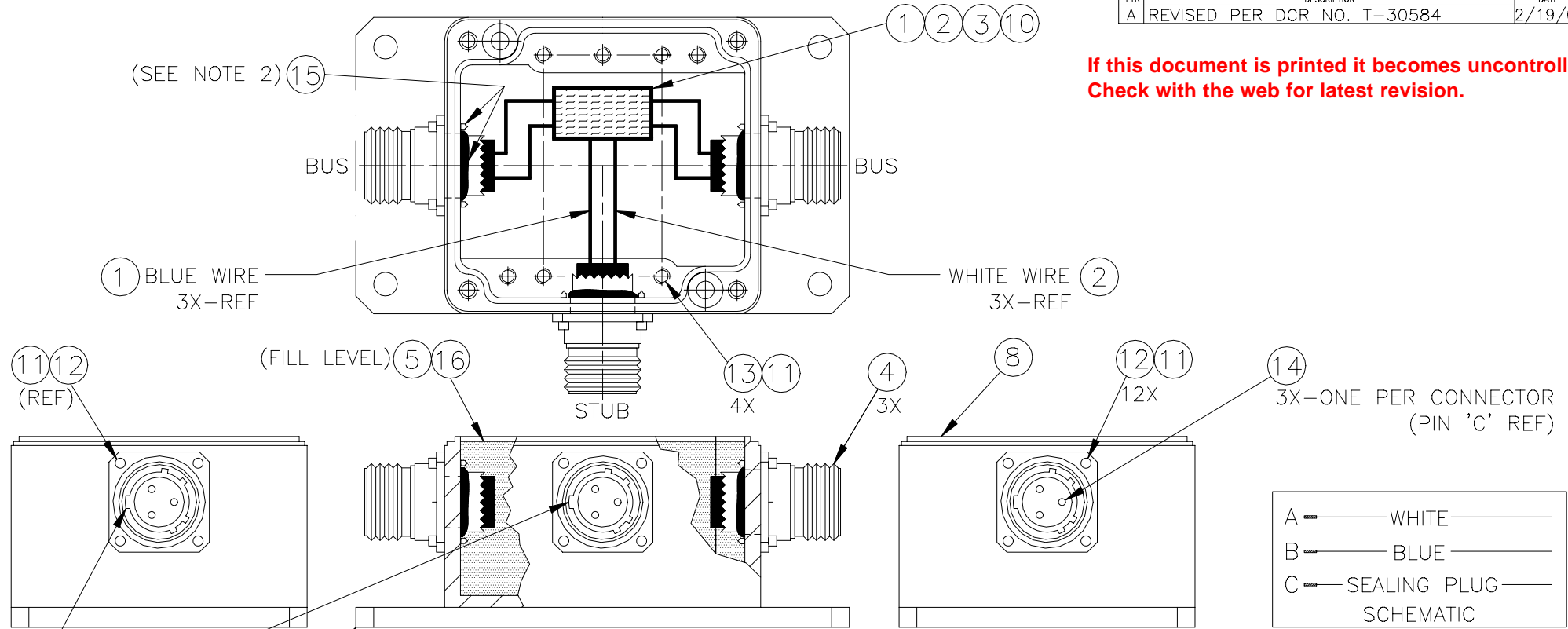


REVISIONS			DATE	APPROVED
LTR	DESCRIPTION			
A	REVISED PER DCR NO. T-30584		2/19/02	GMR

**If this document is printed it becomes uncontrolled.
Check with the web for latest revision.**



(SEE NOTE 2) 15

1 BLUE WIRE
3X-REF

WHITE WIRE 2
3X-REF

(FILL LEVEL) 5 16

11 12
(REF)

13 11
4X

4
3X

8

12 11
12X

14
3X-ONE PER CONNECTOR
(PIN 'C' REF)

9

COVER REMOVED FROM ALL VIEWS FOR CLARITY

LARGE KEYWAY TO BE
IN THE 9 O'CLOCK
POSITION, 3X

A	WHITE
B	BLUE
C	SEALING PLUG
SCHEMATIC	

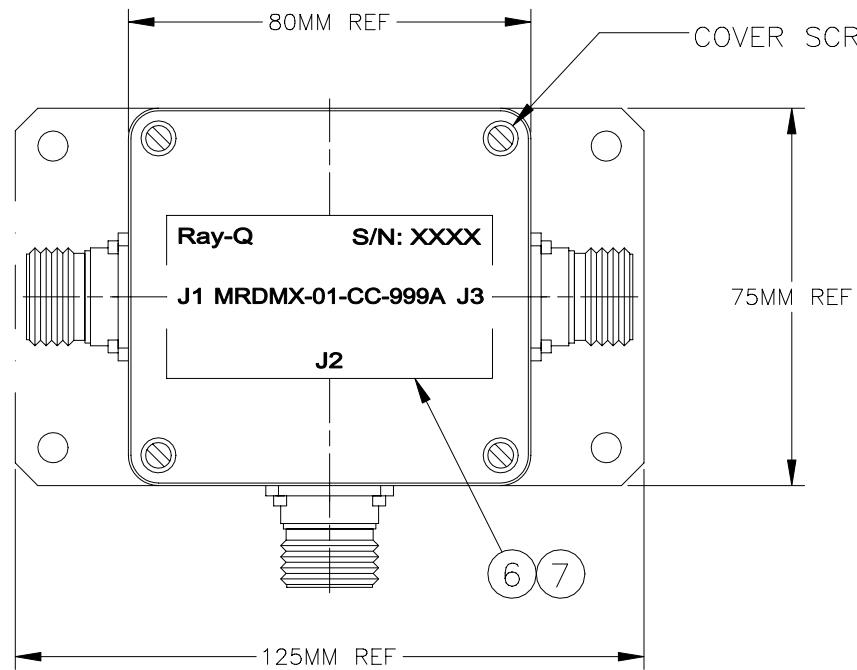
SPECIFICATION CONTROL DRAWING

ITEM	QTY	COMPONENT NO.	DESCRIPTION
10	1	DBS-0047	PWB, SINGLE STUB
9	1	DBP-0018	BASE PLATE FABRICATION
8	1	DBP-0017	ALUMINUM BOX, MODIFIED
7	1	D-095-13-01-41-3	LABEL--Raychem
6	1	D-095-13-01-40-5	LABEL PROTECTOR--Raychem
5	1/2tube	D-095-09-16-04	POTTING, SILICONE--Raychem
4	3	M38999/20WA98PA (DBHC-0046)	CONNECTOR, MIL-C-38999
3	1in	RT-375-1/2-X (DBHC-0008)	TUBING, CLEAR--Raychem
2	24in	55A0114-24-9	WIRE, WHITE--Raychem
1	24in	55A0114-24-6	WIRE, BLUE--Raychem

PARTS LIST

UNLESS OTHERWISE SPECIFIED DIMENSIONS ARE METRIC AND TOLERANCES ARE:		DRAWN G.ROSITANO	DATE 1/4/02	tyco Electronics Raychem WIRE & HARNESSING PRODUCTS 307 CONSTITUTION DRIVE MENLO PARK, CALIFORNIA 94025
USED ON/NEXT ASSY		CHECKED	DATE	
THIS DRAWING AND THE INFORMATION SET FORTH HEREON ARE THE PROPERTY OF TYCO CORPORATION AND ARE TO BE HELD IN TRUST AND CONFIDENCE. PUBLICATION DUPLICATION, DISCLOSURE, OR USE FOR ANY PURPOSE NOT EXPRESSLY AUTHORIZED IN WRITING BY TYCO CORPORATION IS PROHIBITED.		APPROVED	DATE	TITLE COUPLER BOX ASSEMBLY-999A
MATERIAL	THIRD ANGLE PROJECTION			SIZE CODE IDENT. NO. DWG. NO.
FINISH	CAD NAME T30584A	PROJECT	PCN:	D 06090 MRDMX-01-CC-999A
		SCALE	FULL	DO NOT SCALE THIS DRAWING
				SHEET 1 OF 2

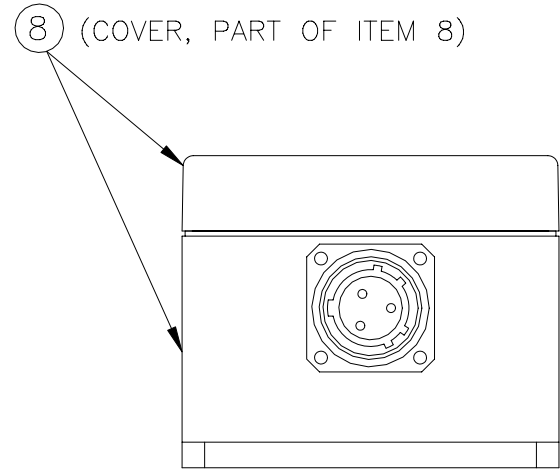
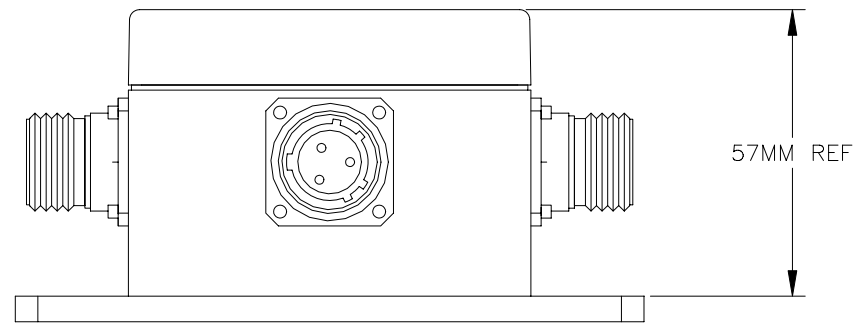
**If this document is printed it becomes uncontrolled.
Check with the web for latest revision.**



COVER SCREWS, 4X (PART OF ITEM 8)

NOTES:

1. BOX TO BE ASSEMBLED AS SHOWN. APPLY LOCTITE 262 TO ALL SCREWS PRIOR TO ASSEMBLY.
2. CONNECTOR MOUNTING HOLES AND SCREWS TO BE SEALED INSIDE BOX WITH ITEM 15, RTV-116 ADHESIVE.
3. AFTER BOX PRIMER, ITEM 16, FILL WITH POTTING MIXTURE, ITEM 5, TO INDICATED FILL LEVEL.
4. LABEL, ITEM 7, TO BE MARKED AS SHOWN.



8 (COVER, PART OF ITEM 8)

ITEM	QTY	COMPONENT NO.	DESCRIPTION
16	1	SS4155	BOX PRIMER--Raychem
15	A/R	RTV-116	SEALANT ADHESIVE--GE
14	3	MS27488-20 (DBHC-0052)	SEALING PLUG, MS27488
13	4	M4 x .7 x 20MM LG (DBHC-0048)	SCREW, FLAT HEAD, ST. STEEL
12	12	M3 x .5 x 8MM LG (DBHC-0047)	SCREW, SKT HEAD CAP, ST. STEEL
11	A/R	LOCTITE 262	THREAD LOCK ADHESIVE

PARTS LIST

SPECIFICATION CONTROL DRAWING

G.ROSITANO		1/4/02	tyco /Electronics/Raychem		WIRE & HARNESSING PRODUCTS 307 CONSTITUTION DRIVE MENLO PARK, CALIFORNIA 94025
THIRD ANGLE PROJECTION			TITLE COUPLER BOX ASSEMBLY-999A		
CAD NAME T30584B		SIZE D	CODE IDENT. NO. 06090	DWG. NO. MRDMX-01-CC-999A	REV A
PROJECT	PCN:	SCALE FULL	DO NOT SCALE THIS DRAWING SHEET 2 OF 2		