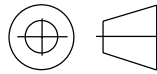
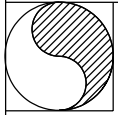


DRAWING NO. P0512

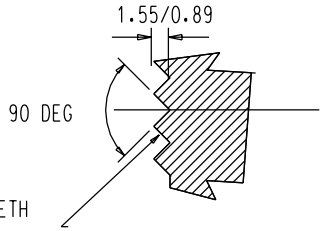
3RD ANGLE PROJECTION



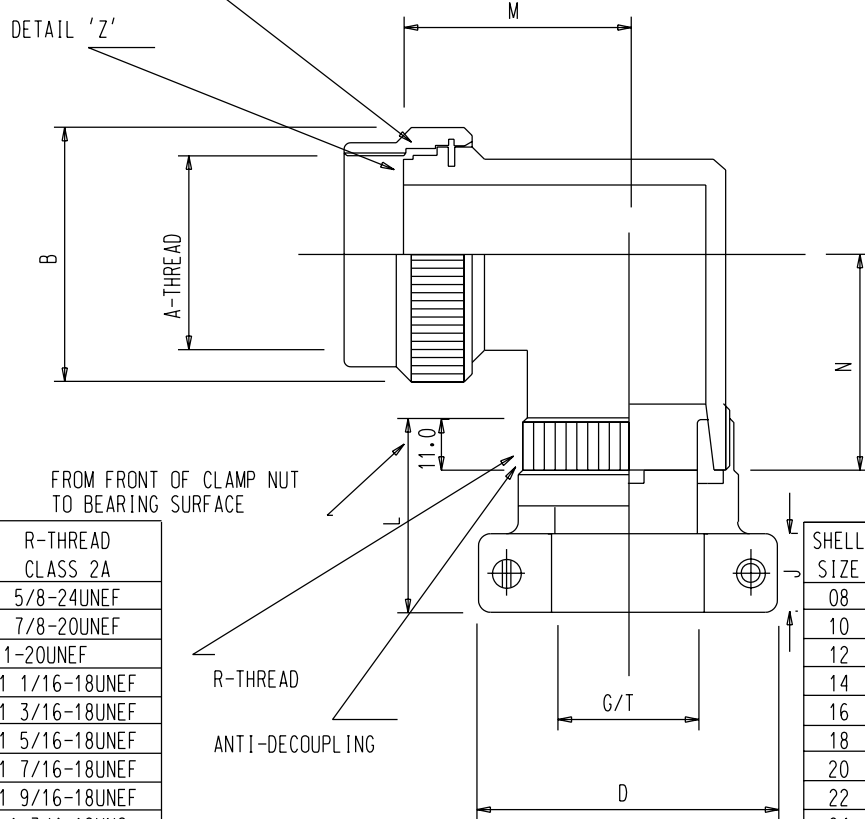
REMOVE ALL SHARP EDGES AND BURRS



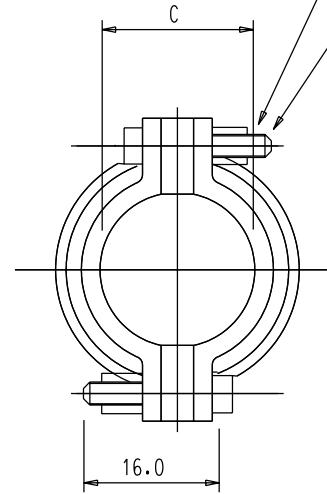
VIEW "Y"



DETAIL 'Z'

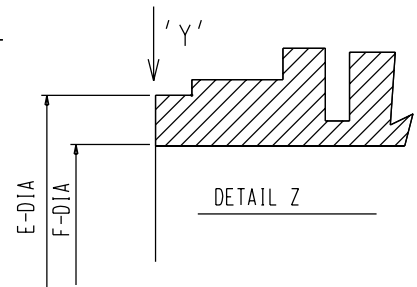


SCREW AND NUT SIZE
08-12 0.138-32UNC
14-28 0.164-32UNC



CLINCH NUT, CAPTIVE
SILVER PLATED, SELF LOCKING

SCREW WITH WRENCHING RECESS
NAS7100 (NO CODE)
NASM14191 (CODE A)
NASM33781 (CODE A)



FROM FRONT OF CLAMP NUT
TO BEARING SURFACE

SHELL SIZE	B MAX	M +0 /-1.0	N +0 /-1.0	A-THREAD CLASS 2B	R-THREAD CLASS 2A
08	19.0	22.3	26.4	1/2-20UNF	5/8-24UNEF
10	22.3	23.8	27.6	5/8-24UNEF	7/8-20UNEF
12	25.4	25.4	29.2	3/4-20UNEF	1-20UNEF
14	28.7	26.6	30.4	7/8-20UNEF	1 1/16-18UNEF
16	31.7	28.1	31.7	1-20UNEF	1 3/16-18UNEF
18	33.5	29.2	33.0	1 1/16-18UNEF	1 5/16-18UNEF
20	36.5	30.7	34.5	1 3/16-18UNEF	1 7/16-18UNEF
22	39.8	32.2	36.0	1 5/16-18UNEF	1 9/16-18UNEF
24	42.9	33.7	37.5	1 7/16-18UNEF	1 3/4-18UNS
28	50.8	40.8	40.6	1 3/4-18UNS	2-18UNS

SHELL SIZE	E +0/-0.1	F +/-0.13	G +/-0.7	T +/-0.7	NO. OF TEETH	C +/-0.76	D MAX	J +/-0.4	L MAX
08	11.10	9.17	10.06	10.06	12	11.12	27.2	8.69	23.62
10	14.53	11.10	11.99	11.99	15	14.28	30.8	8.69	25.15
12	17.45	14.83	15.72	15.72	21	15.88	32.6	8.69	27.94
14	20.62	17.22	18.11	18.11	24	19.05	36.0	11.86	27.94
16	23.80	20.55	21.44	21.44	30	23.83	43.1	11.86	27.94
18	25.20	22.48	23.37	23.37	33	23.83	43.1	11.86	27.94
20	28.37	25.53	26.42	26.42	36	31.75	51.3	11.86	29.11
22	31.55	29.00	29.90	29.90	39	31.75	51.3	11.86	29.11
24	34.72	32.46	33.35	33.35	42	34.93	54.6	11.86	30.76
28	42.75	38.91	39.80	39.80	54	39.67	59.4	11.86	30.76

PART NO. SYSTEM
ESC76-E-22 A

SPEC NO. _____ WRENCHING RECESS
MATERIAL/FINISH _____
SHELL SIZE _____

2	DCR 395	11.4.01	A.D.P
1	FIRST ISSUE	16.12.92	D.C.P
ISSUE	DESCRIPTION	DATE	APPROVED

DRAWN	A.D.P.	16.12.92	MATERIAL/FINISH D-STAINLESS STEEL PASSIVATED E-COUPLING NUT-ST STEEL PASSIVATED BODY-ALUMINIUM ELECTROLESS NICKEL	UNLESS OTHERWISE SPECIFIED:- ALL DIMENSIONS IN MILLIMETRES TOLERANCE ON DIMENSIONS +/-0.1 TOLERANCE ON ANGLES +/-1 DEG	DO NOT SCALE THIS DRAWING THIS DRAWING IS COPYRIGHT AND THE PROPERTY OF POLAMCO LTD. IT MUST NOT BE COPIED, USED FOR MANUFACTURE OR OTHERWISE DISCLOSED, WITHOUT PRIOR WRITTEN CONSENT OF THE COMPANY.	POLAMCO LTD. WESTON LOCK LOWER BRISTOL ROAD BATH AVON	PART NO.	ESC76-**-**
CHECKED							ASSY USED ON	
APPROVED 1								
APPROVED 2								
APPROVED 3								
PROJECT							DRAWING NO.	P0512
PART NO.	ESC76-**-**			WEIGHT				
				SCALE	N.T.S.			