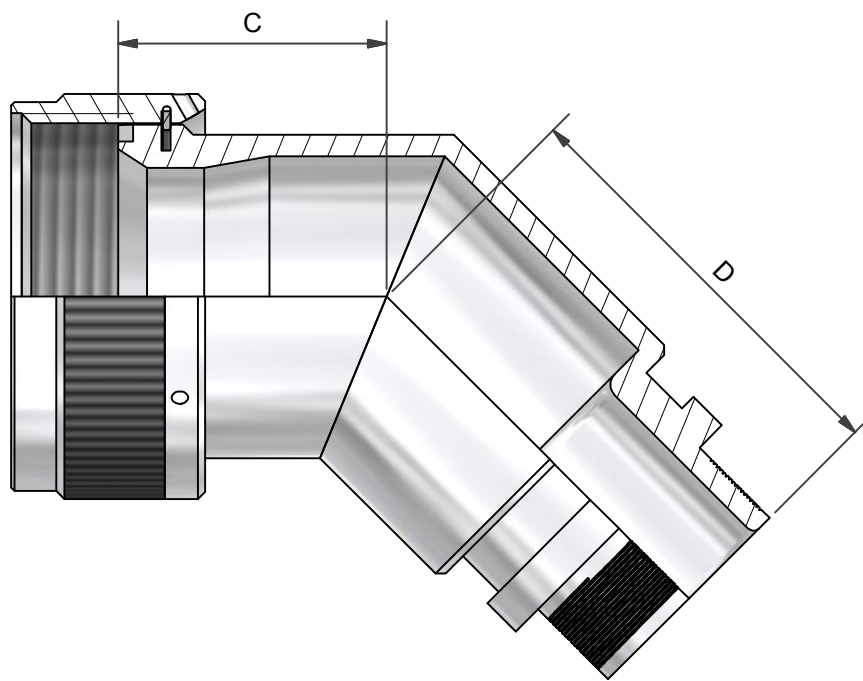
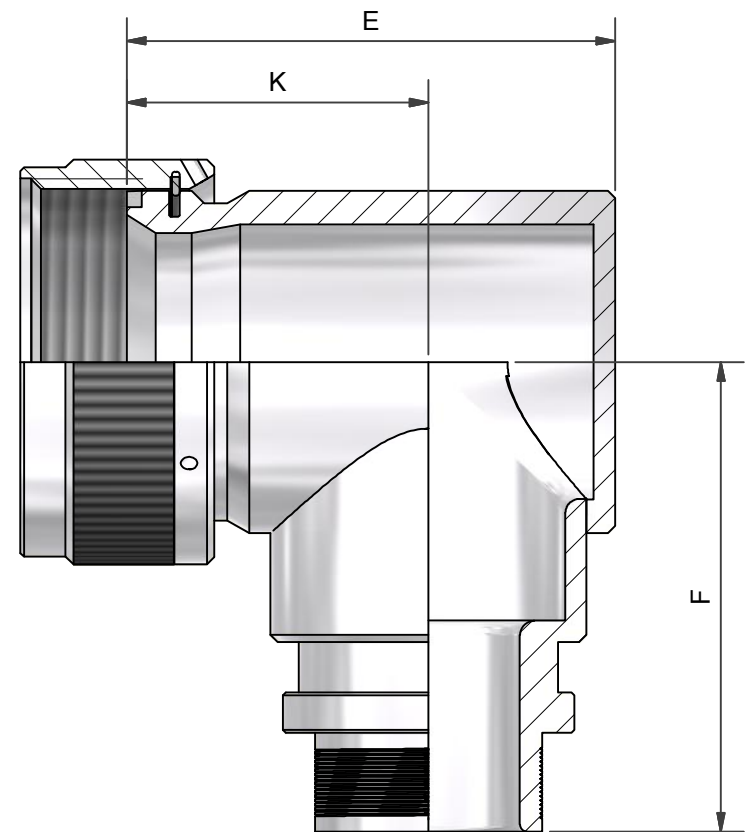


ANGLE 1



ANGLE 2



ANGLE 3

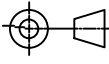


DRAWN		DATE		 3RD ANGLE PROJECTION NOT TO SCALE	PART NUMBER:			<div style="text-align: center; font-size: 24pt; font-weight: bold;">60A SERIES</div>			 <b>Polamco</b>	
K.WINCZURA		23/09/2016			TITLE:							<div style="text-align: center; font-size: 18pt; font-weight: bold;">MEMORY RING BACKSHELL</div>
DESIGN APPROVAL		DATE		UNLESS OTHERWISE SPECIFIED ALL DIMENSIONS IN MILLIMETRES GENERAL TOL LINEAR +/-0,25MM ANGULAR +/- 1°	ASSY USED ON: MIL-DTL-26482 SERIES II /			RESTRICTED TO:			SHT <div style="text-align: center; font-size: 24pt; font-weight: bold;">1</div>	
K.SHEPPARD		23/09/2016			MIL-DTL-83723 SERIES I & III							POLAMCO LTD, WESTON LOCK, LOWER BRISTOL ROAD BATH BA2 1EP
DOC TYPE	Customer Drawing			MATERIAL			THIS DRAWING IS COPYRIGHT AND THE PROPERTY OF POLAMCO LTD			 <b>TE</b> connectivity		
ISSUE/REV		DCR		SEE PART NUMBER BREAKDOWN			IT MUST NOT BE COPIED, USED FOR MANUFACTURE OR OTHERWISE DISCLOSED WITHOUT PRIOR WRITTEN CONSENT OF THE COMPANY.					
AA		---		FINISH								
NCAGE CODE U5792		WEIGHT		SEE PART NUMBER BREAKDOWN								
		14.52 g										

TABLE 1

SHELL SIZE	A THREAD	ØB MAX	ØT MIN	L MAX	C MAX	D MAX	E MAX	F MAX	K ±0,5
03	9/16-24 UNEF	17,0	6,7	25,7	17,0	27,5	26,6	26,4	17,8
08	1/2-20 UNF	15,6	6,5	25,7	16,8	27,3	24,7	26,5	17,5
10	5/8-24 UNEF	18,6	9,2	25,7	17,0	28,0	26,7	28,2	17,8
12	3/4-20 UNEF	21,7	12,7	25,7	17,5	28,5	29,2	28,9	18,7
14	7/8-20 UNEF	24,9	14,6	25,7	18,3	29,5	30,7	30,6	19,0
16	1-20 UNEF	28,2	17,7	25,7	19,2	30,2	34,2	32,9	21,0
18	1 1/16-18 UNEF	30,9	19,7	25,7	19,4	31,0	37,2	33,0	23,5
20	1 3/16-18 UNEF	34,1	22,9	25,7	20,3	31,4	42,2	34,6	27,0
22	1 5/16-18 UNEF	37,3	26,1	25,7	20,5	31,6	44,2	36,2	27,0
24	1 7/16-18 UNEF	40,4	29,0	25,7	22,0	32,6	45,2	37,7	27,0
28	1 3/4-18 UNS	50,0	34,9	36,2	23,5	33,0	54,4	42,4	31,4
32	2 - 18 UNS	56,3	41,2	40,2	25,2	29,8	60,9	45,8	36,4
36	2 1/4-16 UN	62,7	46,7	45,2	26,4	31,2	67,4	48,9	38,0
40	2 1/2-16 UN	69,0	52,1	50,7	28,8	32,5	73,4	51,9	41,0
44	2 3/4-16 UN	75,4	58,6	50,7	30,3	34,2	79,7	55,1	44,1
48	3-16 UN	81,7	65,0	50,7	31,5	35,4	86,0	58,2	47,2
61	1 1/2-18 UNEF	42,0	30,1	28,2	22,3	27,1	48,0	39,2	28,0

TABLE 2

ENTRY SIZE	ØG MIN	ØH MAX	ØM MAX
04	6,3	14,3	9,5
05	7,9	15,8	11,1
06	9,5	17,4	12,7
07	11,1	19,0	14,3
08	12,7	20,6	15,9
10	15,8	23,8	19,0
12	19,0	27,0	22,2
14	22,2	30,1	25,4
16	25,4	33,3	28,6
18	28,5	36,5	31,8
20	31,7	39,7	34,9
22	34,9	42,8	38,1
24	38,1	46,0	41,3

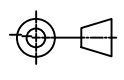
TABLE 3

CODE	PLATING
B	CADMIUM OLIVE DRAB OVER ELECTROLESS NICKEL
C	ELECTROLESS NICKEL
ZB	ZINC COBALT OLIVE DRAB OVER ELECTROLESS NICKEL

SEE SS0076 FOR FULL RANGE OF FINISH OPTIONS

60A1-16-08-1-C-A

SERIES \_\_\_\_\_  
 CONNECTOR INTERFACE \_\_\_\_\_  
 ANGLE \_\_\_\_\_  
 1- STRAIGHT,  
 2 - 45°  
 3 - 90°  
 SHELL SIZE (TABLE 1) \_\_\_\_\_  
 ENTRY SIZE (TABLE 2) \_\_\_\_\_  
 MATERIAL \_\_\_\_\_  
 ALUMINIUM ALLOY  
 FINISH (TABLE 3) \_\_\_\_\_  
 RING OPTION \_\_\_\_\_  
 A - SINGLE BRAID,  
 B - DOUBLE BRAID,  
 OMIT IF NO RING IS REQUIRED

DRAWN		DATE		 3RD ANGLE PROJECTION NOT TO SCALE	PART NUMBER:			
K.WINCZURA		23/09/2016			60A SERIES			
DESIGN APPROVAL		DATE		UNLESS OTHERWISE SPECIFIED ALL DIMENSIONS IN MILLIMETRES GENERAL TOL LINEAR +/-0,25MM ANGULAR +/- 1°	TITLE:			
K.SHEPPARD		23/09/2016			MEMORY RING BACKSHELL			
DOC TYPE	Customer Drawing				ASSY USED ON: MIL-DTL-26482 SERIES II / MIL-DTL-83723 SERIES I & III		RESTRICTED TO:	
ISSUE/REV	AA	DCR	---		THIS DRAWING IS COPYRIGHT AND THE PROPERTY OF POLAMCO LTD IT MUST NOT BE COPIED, USED FOR MANUFACTURE OR OTHERWISE DISCLOSED WITHOUT PRIOR WRITTEN CONSENT OF THE COMPANY.		POLAMCO LTD, WESTON LOCK, LOWER BRISTOL ROAD BATH BA2 1EP	SHT 2
NCAGE CODE U5792		WEIGHT		SEE PART NUMBER BREAKDOWN		SEE PART NUMBER BREAKDOWN		DRAWING NO: P10995

