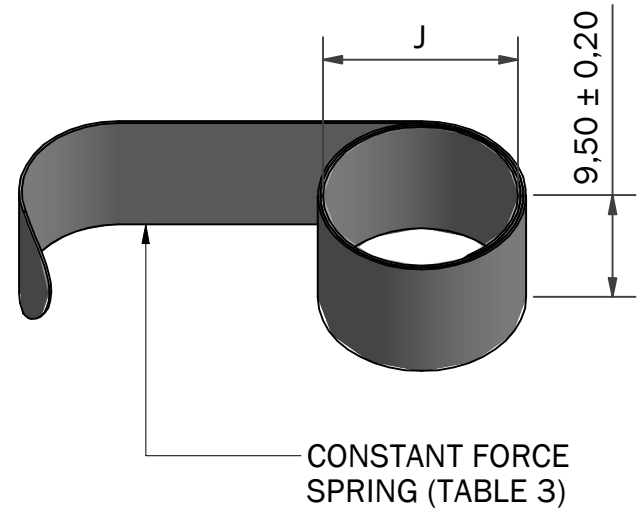
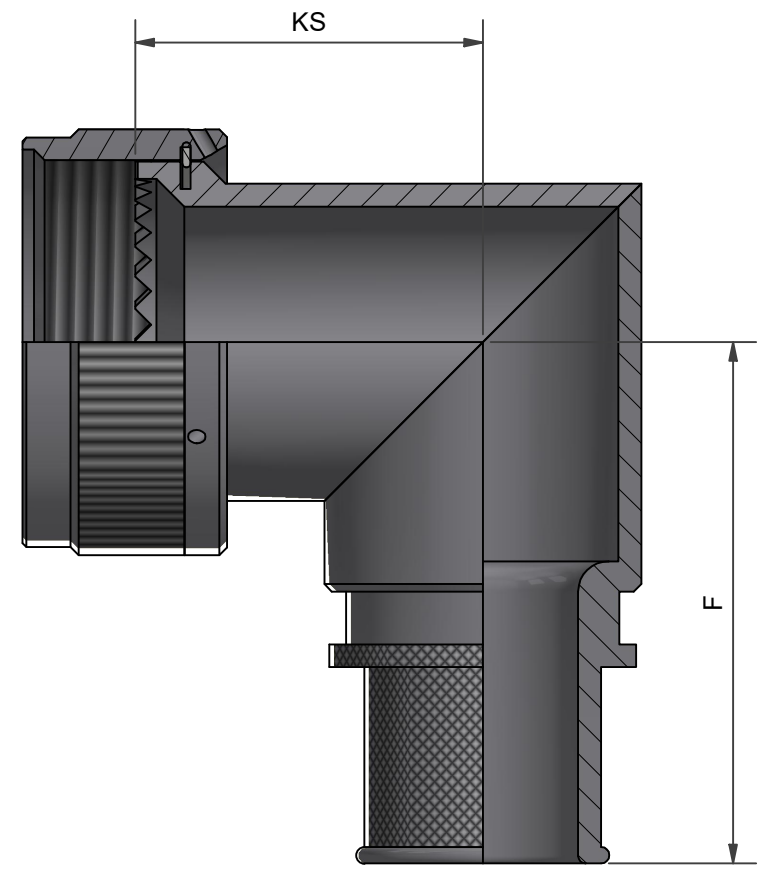
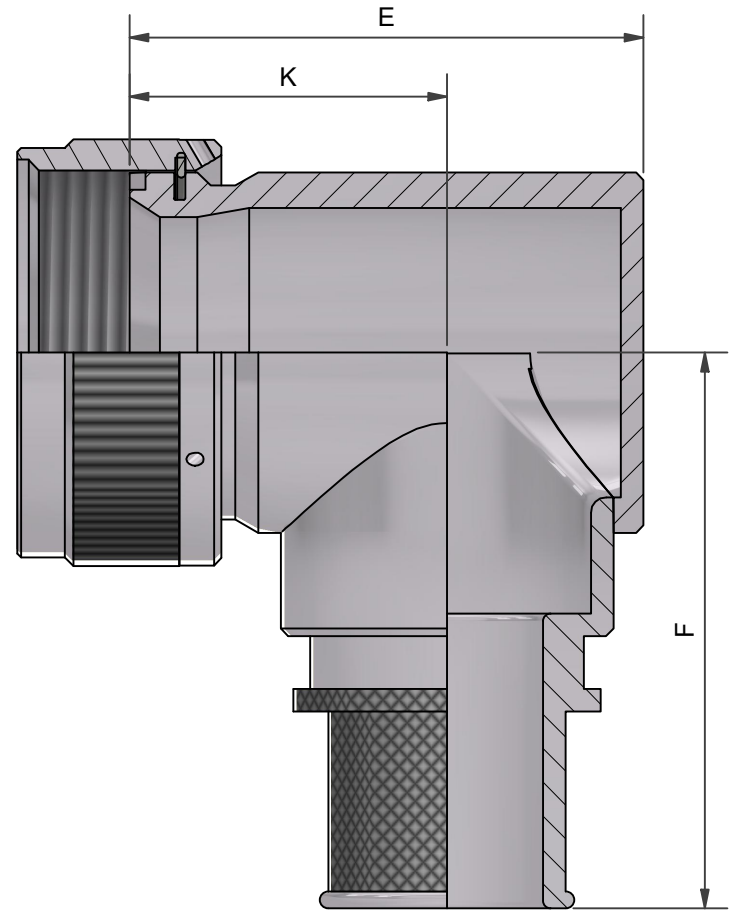
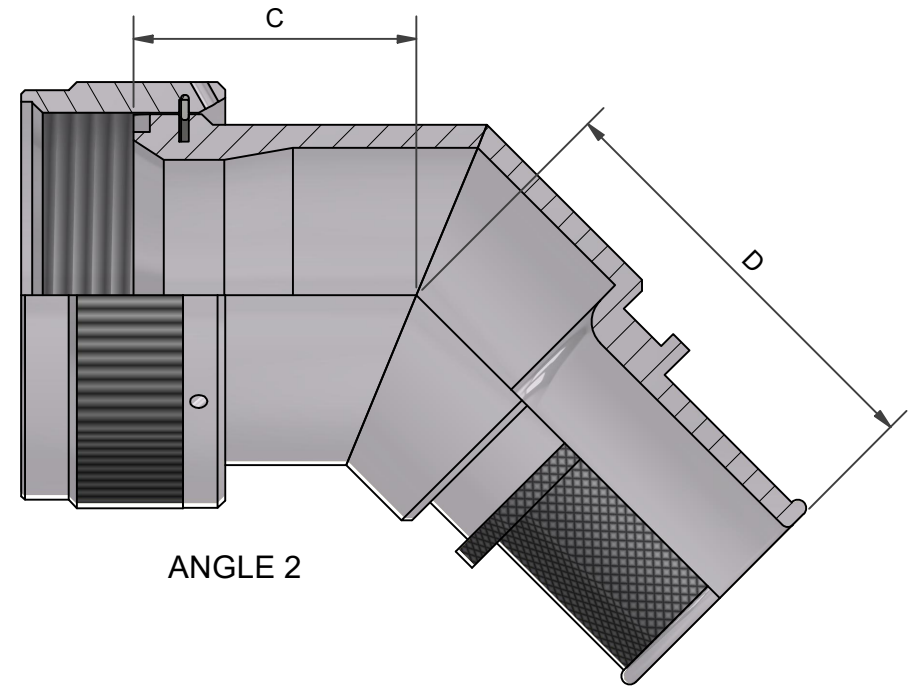
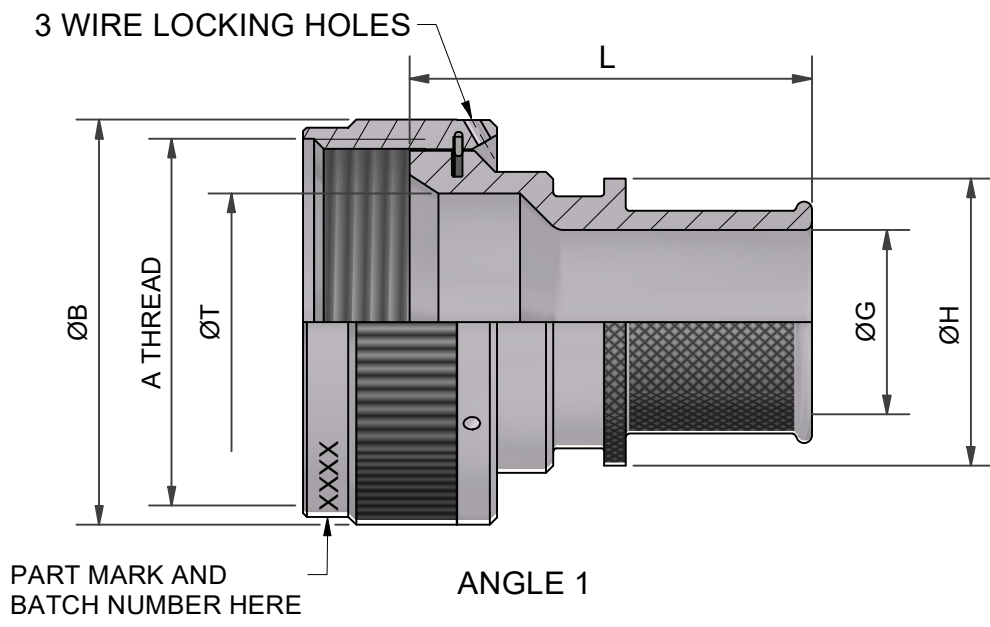


ISS / REV	DESCRIPTION	CHANGED BY	DATE
5	DCR 6481	K.K-W	16/02/17
6	DCR 6708	R.CL	09/05/18
AA	CRN 26424	N.H	01/03/24



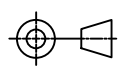

DRAWN	R. CL	DATE	09/05/2018	 3RD ANGLE PROJECTION NOT TO SCALE	PART NUMBER:	91A SERIES			 POLAMCO		
SALES APPR	M.PAUL	DATE	09/05/2018		TITLE:	SPRING TERMINATION BACKSHELL					
DESIGN APPR	K.SHEPPARD	DATE	09/05/2018		<small>UNLESS OTHERWISE SPECIFIED ALL DIMENSIONS IN MILLIMETRES</small> GENERAL TOL LINEAR +/-0,25MM ANGULAR +/- 1°	ASSY USED ON:	THIS DRAWING IS COPYRIGHT AND THE PROPERTY OF POLAMCO LTD IT MUST NOT BE COPIED, USED FOR MANUFACTURE OR OTHERWISE DISCLOSED WITHOUT PRIOR WRITTEN CONSENT OF THE COMPANY.			POLAMCO LTD, WESTON LOCK, LOWER BRISTOL ROAD BATH BA2 1EP	
PROD APPR	K.,SMITH	DATE	09/05/2018			MATERIAL	SEE PART NUMBER BREAKDOWN	SHT		1	DRAWING NO: P11306
QUAL APPR	P.REES	DATE	05/09/2018			FINISH	SEE PART NUMBER BREAKDOWN				
ISSUE/REV	AA	CRN	26424	WEIGHT							
NCAGE CODE U5792											

TABLE 1

SHELL SIZE	A THREAD	ØB MAX	ØT MIN	C ±0,5	D MAX	E MAX	F MAX	K ±0,5	L ±0,5	KS ±0,5
03	9/16-24 UNEF	17,0	6,7	16,8	26,6	26,6	29,4	17,8	28,0	16,0
08	1/2-20 UNF	15,6	6,5	16,6	26,4	24,7	30,5	17,5	28,0	17,5
10	5/8-24 UNEF	18,6	9,2	16,8	26,2	26,7	32,5	17,8	28,0	18,8
12	3/4-20 UNEF	21,7	12,7	17,3	26,1	29,2	32,3	18,7	28,0	20,4
14	7/8-20 UNEF	24,9	14,6	18,1	27,9	30,7	33,9	19,0	28,0	21,5
16	1-20 UNEF	28,2	17,7	19,0	28,2	34,2	37,2	21,0	28,0	23,0
18	1 1/16-18 UNEF	30,9	19,7	19,2	29,1	37,2	37,2	23,5	28,0	24,0
20	1 3/16-18 UNEF	34,1	22,9	20,1	29,3	42,2	38,8	27,0	28,0	25,7
22	1 5/16-18 UNEF	37,3	26,1	20,3	29,6	44,2	41,1	27,0	28,0	27,2
24	1 7/16-18 UNEF	40,4	29,0	21,8	31,5	45,2	42,1	27,0	28,0	28,7
28	1 3/4-18UNS	50,0	34,9	23,3	32,1	54,4	45,8	31,4	36,0	31,6
32	2-18 UNS	56,3	41,2	25,0	33,7	62,5	48,6	36,4	40,0	33,5
36	2 1/4-16 UN	62,7	46,7	26,2	34,9	67,4	51,8	38,0	45,0	36,0
40	2 1/2-16 UN	69,0	52,1	28,6	36,2	73,4	54,8	41,0	50,0	39,3
44	2 3/4-16 UN	75,4	58,6	30,1	37,8	79,7	58,0	44,1	60,0	40,8
48	3-16UN	81,7	65,0	31,3	39,0	86,0	61,1	47,2	60,0	40,8
61	1 1/2-18 UNEF	42,0	30,1	22,1	31,4	48,0	43,5	28,0	28,0	27,0

TABLE 2

ENTRY SIZE	G MIN	H +0,25/-0,40	SPRING REF:
03	4,7	13,9	HE050
04	6,3	13,9	HE050
05	7,9	15,5	HE100
06	9,5	17,2	HE100
07	11,1	18,7	HE100
08	12,7	20,3	HE200
09	14,2	21,9	HE200
10	15,8	23,5	HE200
11	17,4	25,1	HE200
12	19,0	26,7	HE300
13	20,6	28,3	HE300
14	22,2	29,9	HE300
15	23,8	31,5	HE300
16	25,4	33,1	HE300
17	27,0	34,7	HE400
18	28,6	36,3	HE400
19	30,2	37,9	HE400
20	31,8	39,5	HE400
21	33,3	41,1	HE400
22	35,0	42,7	HE400
23	36,5	44,3	HE400
24	38,1	45,9	HE400

TABLE 3

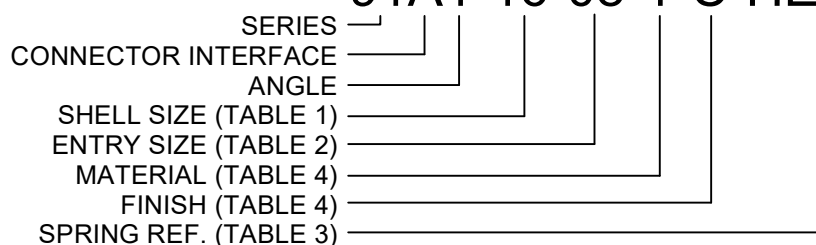
SPRING REF	J MAX (UNCONSTRAINED)
HE 050	7,5
HE 100	9,1
HE 200	12,8
HE 300	17,9
HE 400	21,8

TABLE 4

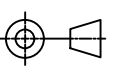

CODE	MATERIAL / FINISH
1-C	ALUMINIUM / ELECTROLESS NICKEL
1-B	ALUMINIUM / CADMIUM OLIVE DRAB OVER ELECTROLESS NICKEL
1-ZB	ALUMINIUM / ZINC COBALT OLIVE DRAB OVER ELECTROLESS NICKEL
1-ZN	ALUMINIUM / ZINC NICKEL BLACK PASSIVATE OVER ELECTROLESS NICKEL
4-J	STAINLESS STEEL / PASSIVATE

SEE SS0076 FOR FULL RANGE OF FINISH OPTIONS

91A1-16-08-1-C-HE200



SPRING REFERENCE NOT INCLUDED IN PART MARKING
e.g 91A1-16-08-1-C [BATCH NUMBER]

DRAWN	R. CL	DATE 09/05/2018	 3RD ANGLE PROJECTION NOT TO SCALE	PART NUMBER:		 POLAMCO
SALES APPR	M. PAUL	09/05/2018		91A SERIES		
DESIGN APPR	K. SHEPPARD	09/05/2018	UNLESS OTHERWISE SPECIFIED ALL DIMENSIONS IN MILLIMETRES GENERAL TOL LINEAR +/-0,25MM ANGULAR +/- 1°	TITLE:		
PROD APPR	K., SMITH	09/05/2018		SPRING TERMINATION BACKSHELL		
QUAL APPR	P. REES	05/09/2018		ASSY USED ON:		
ISSUE/REV AA	CRN 26424	WEIGHT	MATERIAL SEE PART NUMBER BREAKDOWN	THIS DRAWING IS COPYRIGHT AND THE PROPERTY OF POLAMCO LTD IT MUST NOT BE COPIED, USED FOR MANUFACTURE OR OTHERWISE DISCLOSED WITHOUT PRIOR WRITTEN CONSENT OF THE COMPANY.		POLAMCO LTD, WESTON LOCK, LOWER BRISTOL ROAD BATH BA2 1EP
NCAGE CODE U5792			FINISH SEE PART NUMBER BREAKDOWN	SHT 2	DRAWING NO: P11306	