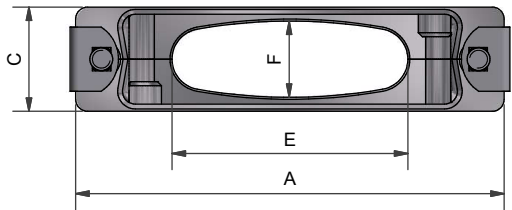
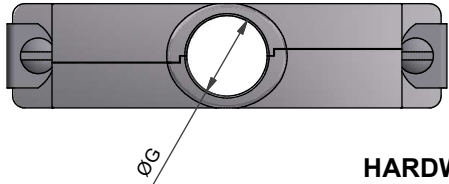


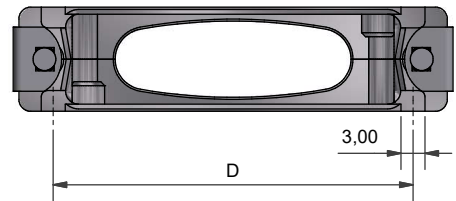
ELLIPTICAL ENTRY



CIRCULAR ENTRY

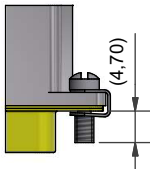


T OPTION PROVIDES CUTOUTS IN ORDER TO ACCOMMODATE TABS

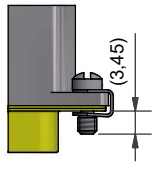


HARDWARE OPTIONS

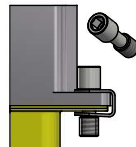
CODE: S
STANDARD
SLOTTED
HEAD SCREW



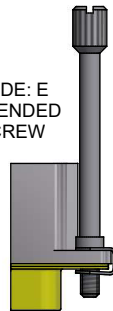
CODE: SSL
SHORT
SLOTTED
HEAD SCREW



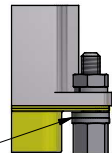
CODE: H
HEX SOCKET
HEAD SCREW



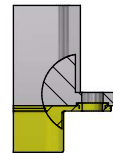
CODE: E
EXTENDED
SCREW



CODE: PF/F
JACK POST
(4-40 UNC)



CODE: 0
NO HARDWARE
SUPPLIED



CODE: 2H
HEX SOCKET
HEAD SCREW
PLUS SHELL
HEX
SOCKET HEAD
SCREW

WASHERS

DRAWN		DATE	
DIW		09/02/2018	
DESIGN APPROVAL		DATE	
K.SHEPPARD		09/04/2018	
DOC TYPE	Customer Drawing		
ISSUE AA	REV.	DCR CRN26424	
NCAGE CODE U5792		WEIGHT N/A	

<p>3RD ANGLE PROJECTION NOT TO SCALE</p>	UNLESS OTHERWISE SPECIFIED ALL DIMENSIONS IN MILLIMETRES
	<p>GENERAL TOL LINEAR +/-0,25MM ANGULAR +/- 1°</p>
MATERIAL SEE PART NUMBER BREAKDOWN	
FINISH SEE PART NUMBER BREAKDOWN	

PART NUMBER:		DSF**-T-BT-**-**-*	
TITLE:		SPLIT D-SUB BANDING BACKSHELL	
ASSY USED ON:		MIL-DTL-24308	
THIS DRAWING IS COPYRIGHT AND THE PROPERTY OF POLAMCO LTD IT MUST NOT BE COPIED, USED FOR MANUFACTURE OR OTHERWISE DISCLOSED WITHOUT PRIOR WRITTEN CONSENT OF THE COMPANY.			
POLAMCO LTD, WESTON LOCK, LOWER BRISTOL ROAD BATH BA2 1EP		SHT 1	DRAWING NO: P15566

Polamco

STE
connectivity

DSF25-T-BT-11E-1-C-T-H

CONNECTOR TYPE _____
 SHELL SIZE (SEE TABLE 1) _____
 ENTRY POSITION _____
 TERMINATION STYLE _____
 (BT - BAND TERMINATION STYLE)
 ENTRY SIZE (SEE TABLE 2A (CIRCULAR);
 TABLE 2B (ELLIPTICAL)) _____
 INSERT E FOR ELLIPTICAL ENTRY _____
 MATERIAL _____
 ALUMINIUM ALLOY _____
 PLATING (TABLE 3) _____
 T OPTION _____
 OMIT FOR STANDARD FLANGE _____
 HARDWARE OPTION _____
 SEE BELOW FOR CODE 2H DETAILS

TABLE 1

SHELL SIZE	A	B	C	D	MAX CIRCULAR ENTRY	MAX ELLIPTICAL ENTRY
09	31,19	25,00	13,00	22,86	06	08E
15	39,52	33,33	13,00	31,09	06	10E
25	53,42	47,02	13,00	44,86	06	12E
37	69,76	63,50	13,00	61,32	06	15E
50	67,31	61,12	15,80	58,98	08	16E
104	69,70	63,50	17,90	NA	09	18E

TABLE 2A

ENTRY SIZE	G
01	3,18
02	4,75
03	6,86
04	7,37
05	7,92
06	10,03
07	10,67
08	12,70
09	14,27

TABLE 2B

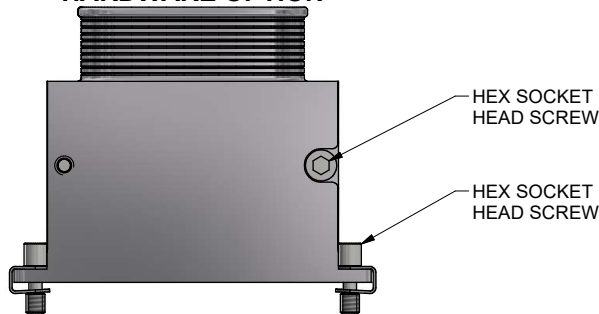
ENTRY SIZE	E MIN	F MIN	J
07E	13,00	9,50	18,0
08E	16,50	9,50	21,5
09E	20,50	9,50	25,5
10E	24,70	9,50	29,7
11E	29,40	9,50	34,4
12E	34,60	9,50	39,6
13E	40,20	9,50	45,2
14E	46,20	9,50	51,2
15E	52,70	9,50	57,7
16E	50,00	12,00	55,0
17E	49,20	13,90	54,2
18E	54,90	13,90	59,9

TABLE 3

FINISH CODE	DESCRIPTION
B	CADMIUM OLIVE DRAB OVER ELECTROLESS NICKEL
C	ELECTROLESS NICKEL
Y	YELLOW CHROMATE OVER CADMIUM

SEE SS0076 FOR FULL RANGE OF FINISH OPTIONS

CODE: 2H HARDWARE OPTION



DRAWN	DATE	 3RD ANGLE PROJECTION NOT TO SCALE	PART NUMBER:	DSF**-T-BT-**-**-*	 Polamco connectivity
DIW	09/02/2018		TITLE:	SPLIT D-SUB BANDING BACKSHELL	
DESIGN APPROVAL	DATE	UNLESS OTHERWISE SPECIFIED ALL DIMENSIONS IN MILLIMETRES GENERAL TOL LINEAR +/-0,25MM ANGULAR +/- 1°	ASSY USED ON: MIL-DTL-24308	THIS DRAWING IS COPYRIGHT AND THE PROPERTY OF POLAMCO LTD IT MUST NOT BE COPIED, USED FOR MANUFACTURE OR OTHERWISE DISCLOSED WITHOUT PRIOR WRITTEN CONSENT OF THE COMPANY.	
K.SHEPPARD	09/04/2018		MATERIAL		
DOC TYPE	Customer Drawing		SEE PART NUMBER BREAKDOWN	SHT	DRAWING NO: P15566
ISSUE	REV.	DCR CRN26424	SEE PART NUMBER BREAKDOWN	2	
NCAGE CODE U5792		WEIGHT N/A	SEE PART NUMBER BREAKDOWN		