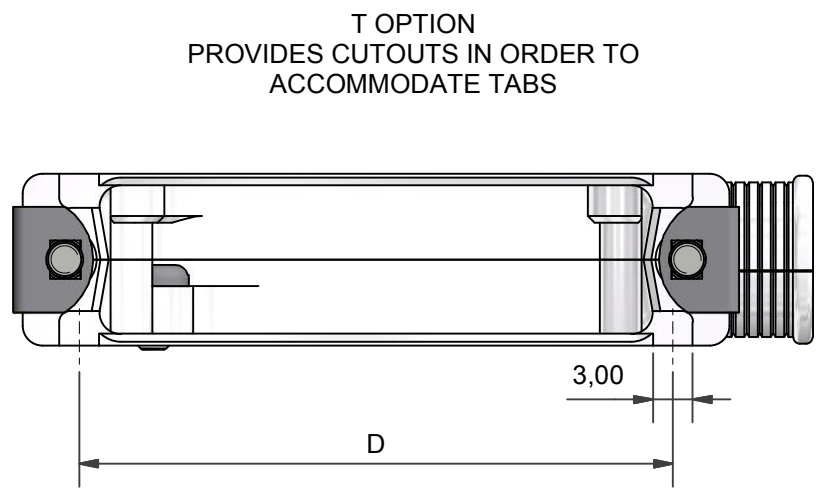
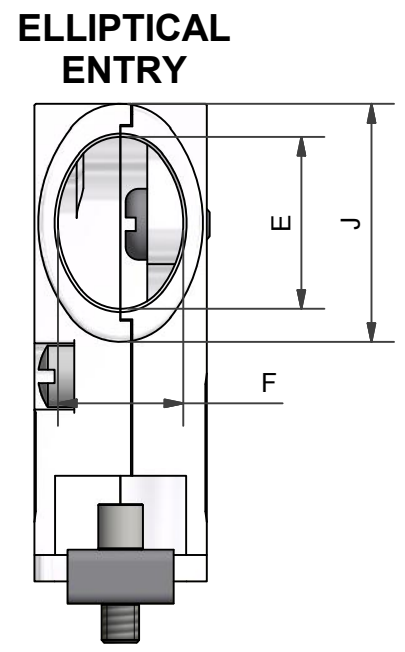
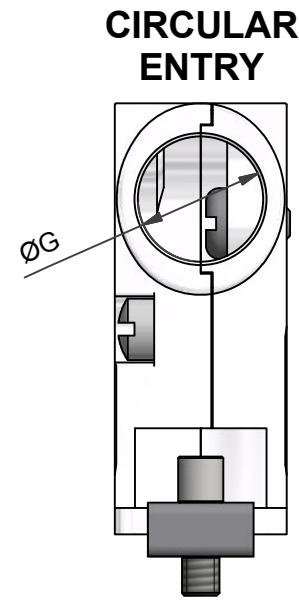
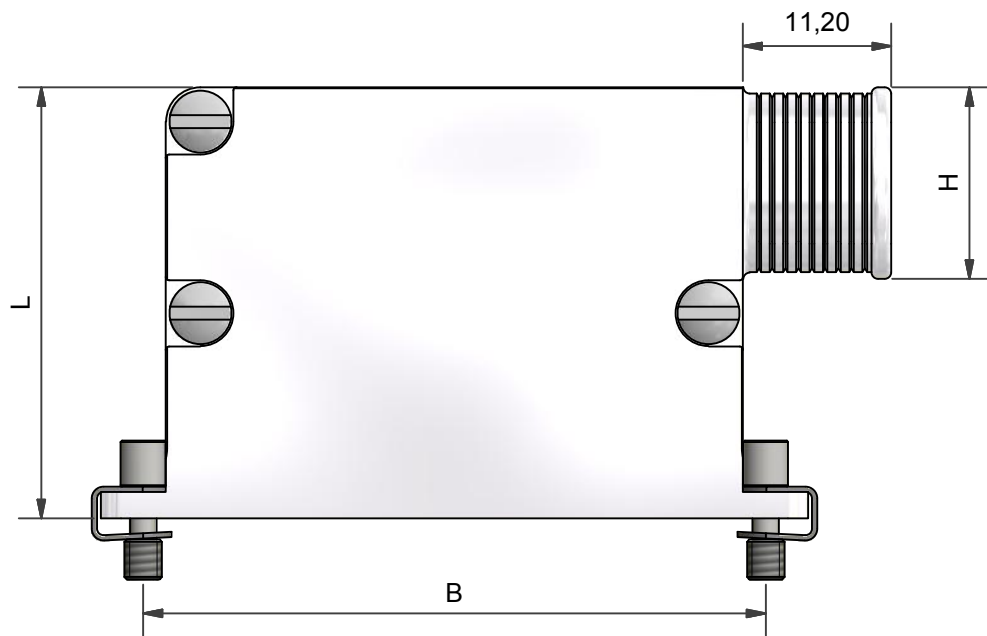
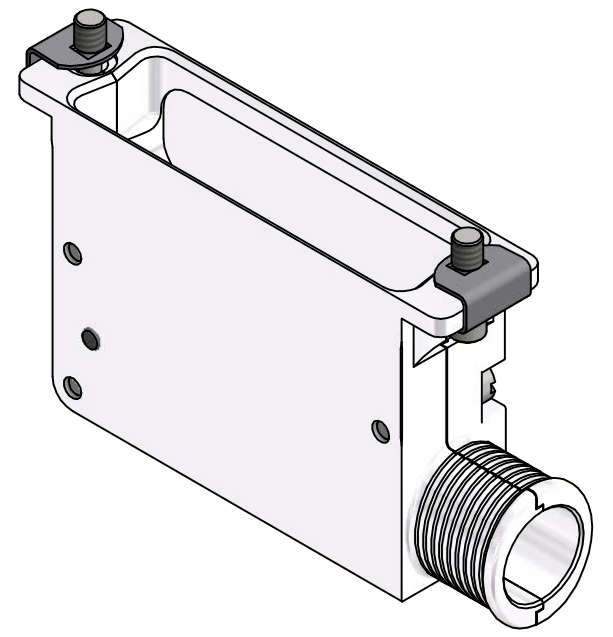
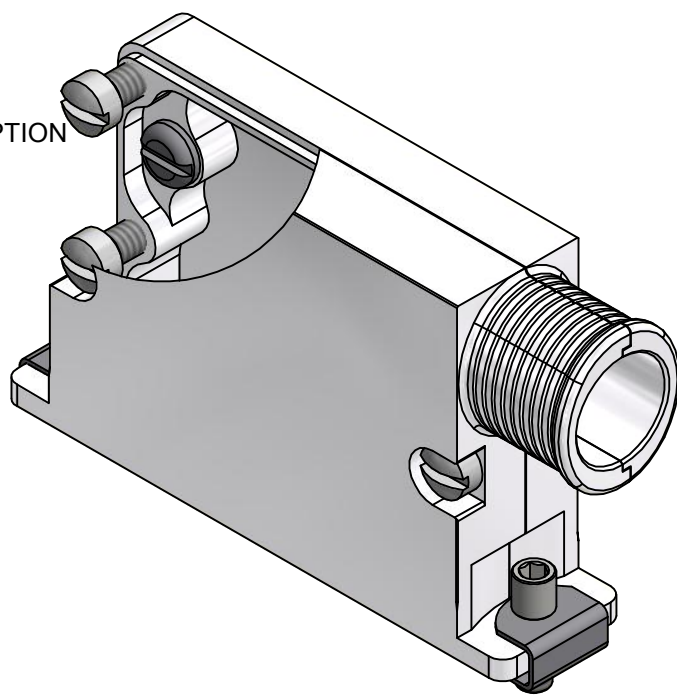


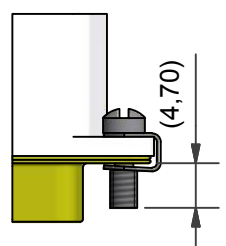
GROUNDING SCREW OPTION



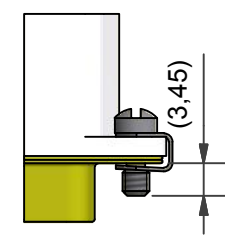
T OPTION PROVIDES CUTOUTS IN ORDER TO ACCOMMODATE TABS

**HARDWARE OPTIONS**

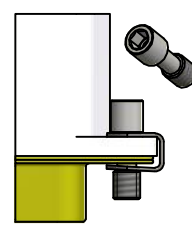
CODE: S  
STANDARD  
SLOTTED  
HEAD SCREW



CODE: SSL  
SHORT  
SLOTTED  
HEAD SCREW

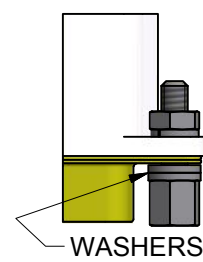


CODE: H  
HEX SOCKET  
HEAD SCREW



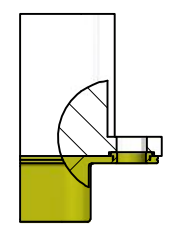
CODE: 2H  
HEX SOCKET  
HEAD SCREW  
PLUS SHELL HEX  
SOCKET HEAD  
SCREW

CODE: F  
JACK POST  
(4-40 UNC)



WASHERS

CODE: 0  
NO HARDWARE  
SUPPLIED



DRAWN		DATE	
DIW		19/02/2018	
DESIGN APPROVAL		DATE	
K.SHEPPARD		20/03/2018	
DOC TYPE	Customer Drawing		
ISSUE	REV.	DCR	
6		6701	
NCAGE CODE U5792		WEIGHT N/A	

3RD ANGLE PROJECTION NOT TO SCALE

UNLESS OTHERWISE SPECIFIED ALL DIMENSIONS IN MILLIMETRES  
GENERAL TOL LINEAR +/-0,25MM ANGULAR +/- 1°

**MATERIAL**  
SEE PART NUMBER BREAKDOWN

**FINISH**  
SEE PART NUMBER BREAKDOWN

PART NUMBER: <b>DSF**-R-BT*-*-**</b>	
TITLE: <b>90DEG SPLIT BANDING BACKSHELL</b>	
ASSY USED ON: MIL-DTL-24308	
THIS DRAWING IS COPYRIGHT AND THE PROPERTY OF POLAMCO LTD IT MUST NOT BE COPIED, USED FOR MANUFACTURE OR OTHERWISE DISCLOSED WITHOUT PRIOR WRITTEN CONSENT OF THE COMPANY.	

Polamco

TE connectivity

SHT 1

DRAWING NO: P15583

POLAMCO LTD, WESTON LOCK, LOWER BRISTOL ROAD BATH BA2 1EP

# DSF25-R-BTG-08E-1-C-T-H

CONNECTOR TYPE \_\_\_\_\_  
 SPLIT SHELL, FLANGE MOUNTING \_\_\_\_\_  
 SHELL SIZE \_\_\_\_\_  
 ENTRY POSITION (R - 90°) \_\_\_\_\_  
 TERMINATION STYLE \_\_\_\_\_  
 GROUNDING SCREW OPTION \_\_\_\_\_  
 OMIT IF NOT REQUIRED \_\_\_\_\_  
 ENTRY SIZE (TABLE 2A AND 2B) \_\_\_\_\_  
 MATERIAL \_\_\_\_\_  
 ALUMINIUM ALLOY \_\_\_\_\_  
 FINISH (SEE TABLE 3) \_\_\_\_\_  
 T OPTION \_\_\_\_\_  
 OMIT FOR STANDARD FLANGE \_\_\_\_\_  
 HARDWARE OPTION \_\_\_\_\_  
 SEE BELOW FOR CODE 2H DETAILS

TABLE 1

SHELL SIZE	A	B	C	D
09	31,19	25,00	13,00	22,86
15	39,52	33,33	13,00	31,09
25	53,42	47,02	13,00	44,86
37	69,76	63,50	13,00	61,32
50	67,31	61,12	15,80	58,98
104	69,70	63,50	17,90	NA

TABLE 2A - CIRCULAR ENTRIES

ENTRY SIZE	G	H MAX	L
01	3,18	8,20	32,60
02	4,75	9,80	32,60
03	6,86	11,90	32,60
04	7,37	12,40	32,60
05	7,92	12,90	32,60
06	9,50	14,50	32,60

TABLE 2B - ELLIPTICAL ENTRIES

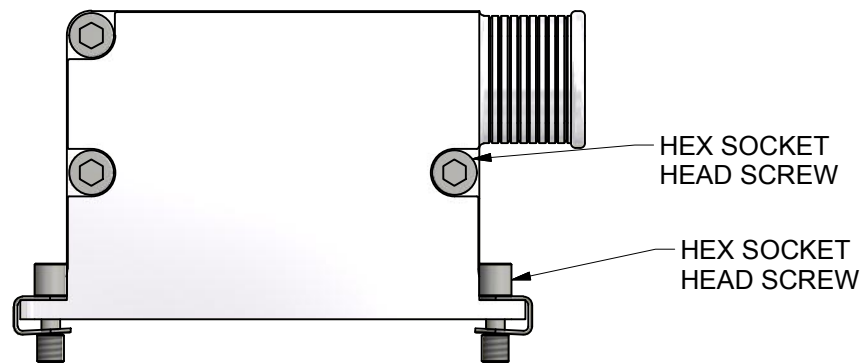
ENTRY SIZE	E MIN	F MIN	J	L
07E	13,00	9,50	18,00	36,10
08E	16,50	9,50	21,50	39,60
09E	20,50	9,50	25,50	43,60
10E	24,70	9,50	29,70	47,80

TABLE 3

CODE	FINISH
C	ELECTROLESS NICKEL
B	CADMIUM OLIVE DRAB OVER ELECTROLESS NICKEL
ZN	ZINC NICKEL BLACK PASSIVATE OVER ELECTROLESS NICKEL
CHP	ELECTROLESS NICKEL, HIGH PHOSPHOR
Y	YELLOW CHROMATE OVER CADMIUM
GOLD	GOLD OVER ELECTROLESS NICKEL

SEE SS0076 FOR FULL RANGE OF FINISH OPTIONS

### CODE: 2H HARDWARE OPTION



DRAWN	DATE	 3RD ANGLE PROJECTION NOT TO SCALE	PART NUMBER:	DSF**-R-BT*-*-**	 
DIW	19/02/2018		TITLE:	90DEG SPLIT BANDING BACKSHELL	
DESIGN APPROVAL	DATE	UNLESS OTHERWISE SPECIFIED ALL DIMENSIONS IN MILLIMETRES GENERAL TOL LINEAR +/-0,25MM ANGULAR +/- 1°	ASSY USED ON: MIL-DTL-24308		SHT
K.SHEPPARD	20/03/2018				
DOC TYPE	Customer Drawing		MATERIAL	THIS DRAWING IS COPYRIGHT AND THE PROPERTY OF POLAMCO LTD IT MUST NOT BE COPIED, USED FOR MANUFACTURE OR OTHERWISE DISCLOSED WITHOUT PRIOR WRITTEN CONSENT OF THE COMPANY.	
ISSUE	REV.	SEE PART NUMBER BREAKDOWN	POLAMCO LTD, WESTON LOCK, LOWER BRISTOL ROAD BATH BA2 1EP		
6	DCR 6701	FINISH	DRAWING NO: P15583		
NCAGE CODE U5792		WEIGHT N/A	SEE PART NUMBER BREAKDOWN		