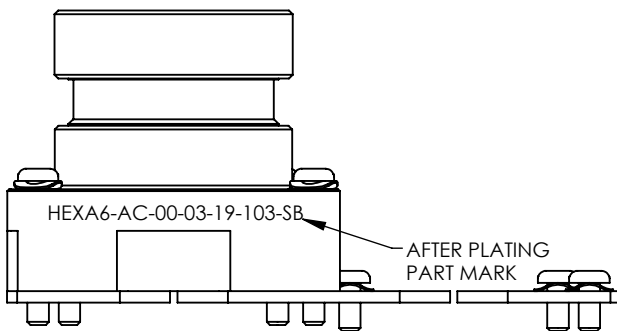
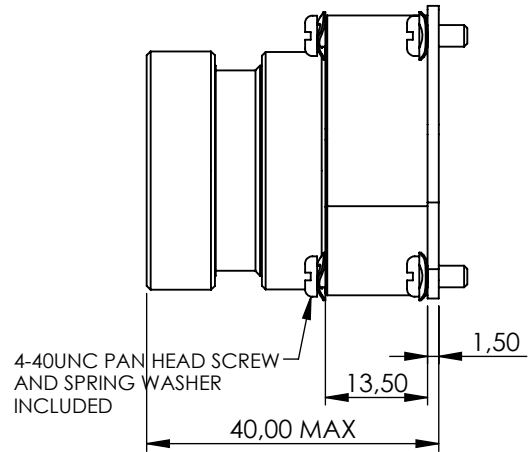
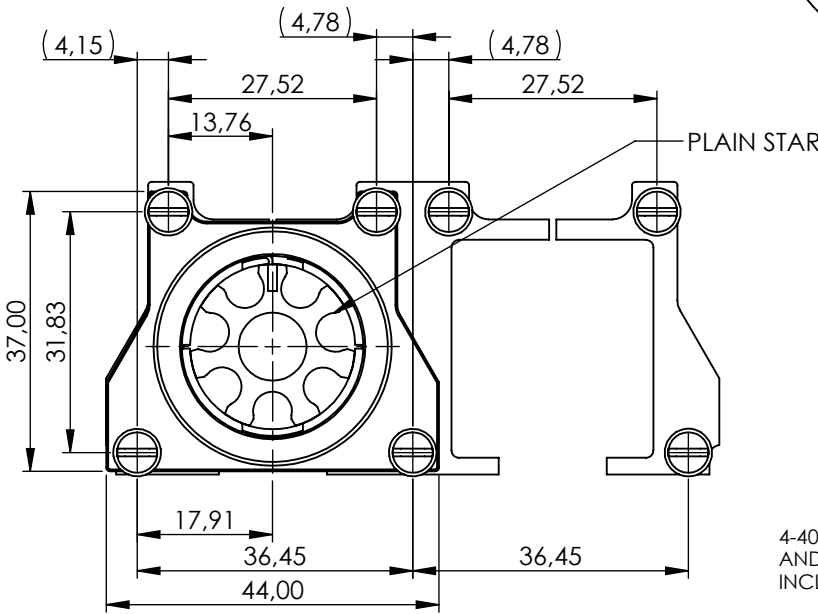
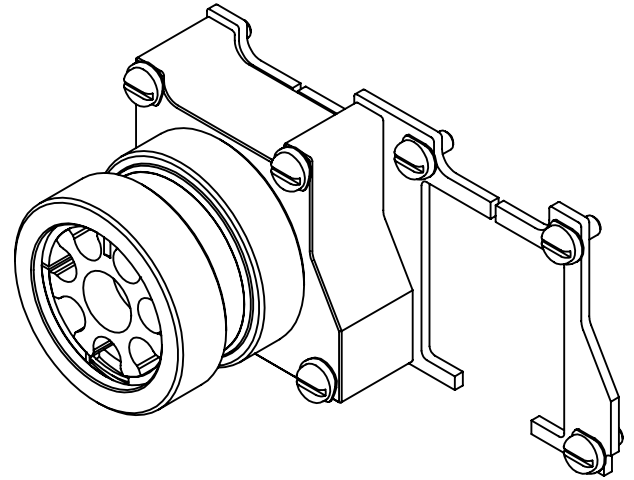
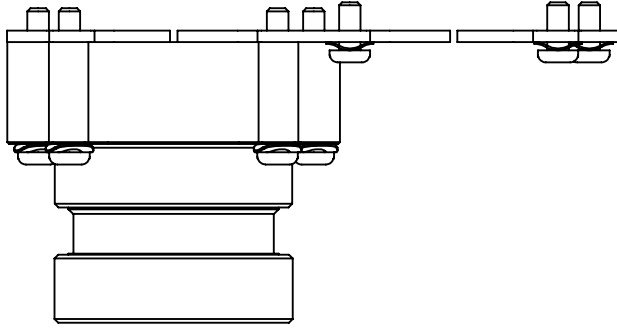


REVISIONS

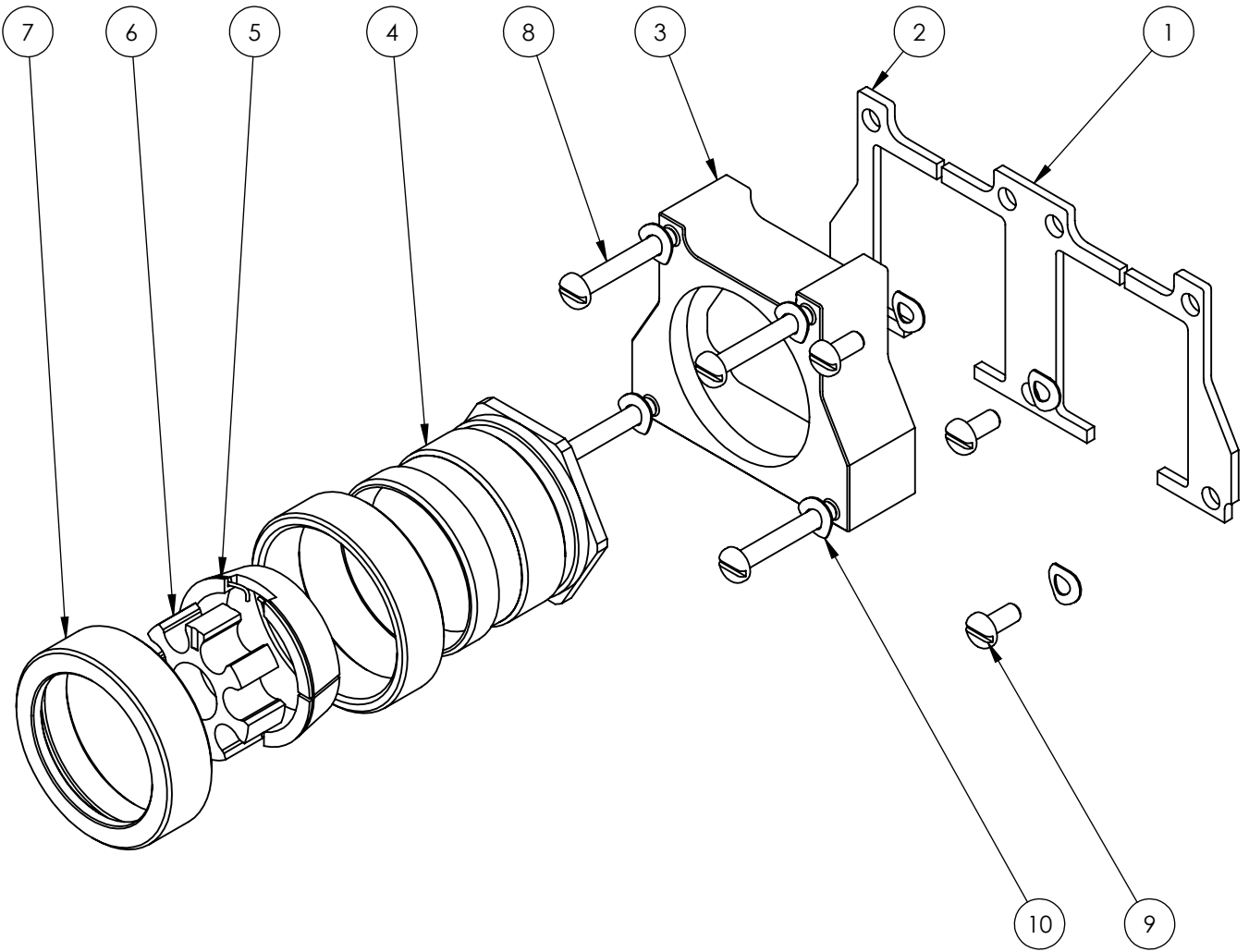
REV	DESCRIPTION	DATE	CHANGED BY	APPROVED BY
AB	ECR 8137	22/03/2021	D. WRIGLEY	R. STYLES



THIS DRAWING IS UNPUBLISHED. ALL RIGHTS RESERVED. © COPYRIGHT 20 BY

DIMENSIONS: MILLIMETERS	DWN: D. WRIGLEY 19/07/2018	MATERIAL: SEE PN BREAKDOWN	FINISH: SEE PN BREAKDOWN
	CHK: M. PAUL 19/07/2018	TE Connectivity	
TOLERANCES UNLESS OTHERWISE SPECIFIED:	APVD: R. STYLES 00/00/0000		
GENERAL TOL LINEAR ±0,25MM ANGULAR ±1°	PRODUCT SPEC: USED ON ARINC 600 #3, CAVITY C	NAME: ARINC 600 SIZE 3 - C OUTLET ASSEMBLY	
	APPLICATION SPEC: -	SIZE: A4	CAGE CODE: U5792
	WEIGHT: SEE NOTE 2	DRAWING NO: P36932	RESTRICTED TO
CUSTOMER DRAWING		SCALE: 1:1	SHEET: 1 OF 3
			REV: AB

REVISIONS				
REV	DESCRIPTION	DATE	CHANGED BY	APPROVED BY
AB	ECR 8137	22/03/2021	D. WRIGLEY	R. STYLES




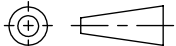
ITEM	QTY	DESCRIPTION	MATERIAL
1	1	RETAINER PLATE	ALUMINIUM ALLOY
2	2	RETAINER PLATE	ALUMINIUM ALLOY
3	1	ARINC 600 #3 CAVITY C BACKSHELL	ALUMINIUM ALLOY
4	1	OUTLET ASSEMBLY - M28	ALUMINIUM ALLOY
5	1	CONIC RING ASSEMBLY	ALUMINIUM ALLOY
6	1	PLAIN STAR	ALUMINIUM ALLOY
7	1	BACK NUT	ALUMINIUM ALLOY
8	4	4-40UNC PAN HEAD SCREW 3/4" LONG	STAINLESS STEEL - PASSIVATED
9	3	4-40UNC PAN HEAD SCREW 1/4" LONG	STAINLESS STEEL - PASSIVATED
10	7	SPRING WASHER	STAINLESS STEEL - PASSIVATED

RELEASED FOR PUBLICATION

ALL RIGHTS RESERVED.

THIS DRAWING IS UNPUBLISHED.

© COPYRIGHT 20 BY

DIMENSIONS: MILLIMETERS	DWN: D. WRIGLEY 19/07/2018	MATERIAL: SEE PN BREAKDOWN	FINISH: SEE PN BREAKDOWN
	CHK: M. PAUL 19/07/2018	 TE Connectivity	
TOLERANCES UNLESS OTHERWISE SPECIFIED:	APVD: R. STYLES 00/00/0000		
GENERAL TOL LINEAR $\pm 0,25$ MM ANGULAR $\pm 1^\circ$	PRODUCT SPEC: USED ON ARINC 600 #3, CAVITY C	NAME: ARINC 600 SIZE 3 - C OUTLET ASSEMBLY	
	APPLICATION SPEC: -	SIZE: A4	CAGE CODE: U5792
	WEIGHT: SEE NOTE 2	DRAWING NO: C-P36932	RESTRICTED TO
	CUSTOMER DRAWING	SCALE: 1:1	SHEET 2 OF 3 REV AB

REVISIONS				
REV	DESCRIPTION	DATE	CHANGED BY	APPROVED BY
AB	ECR 8137	22/03/2021	D. WRIGLEY	R. STYLES

HEXA6 - A C - 00 - 03 - 19 - 103 - SB

CONNECTOR CODE NUMBER _____
 HEXA6 = ARINC 600 CONNECTOR

MATERIAL CODE _____
 ALUMINIUM ALLOY

PLATING CODE _____
 B = CADMIUM OLIVE DRAB TO SAE-AMS-QQ-P-416
 C = ELECTROLESS NICKEL TO SAE-AMS-MIL-C-26074

OUTLET STYLE _____
 00 = STRAIGHT

ORDER NUMBER _____
 03 = SIZES (CAVITY C)

ORDER NUMBER (FOR MATING ACCESSORY SHELL SIZE 19) _____

ASSEMBLY SPECIFICATION ORDER NUMBER (CUSTOMER MODIFICATION) _____


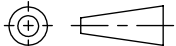
SB (MODIFIED SIDE SUPPORT) _____

APPLICATION
 THIS BACKSHELL ASSEMBLY IS DESIGNED TO BE MOUNTED ON THE FOLLOWING CONNECTORS:
 ARINC 600 PLUG, SHELL SIZE 3, RETAINER PLATES RETAIN INSERTS IN CAVITY C AND F POSITION, BACKSHELL BODY FITS OVER CAVITY C

PACKAGING
 ALL ASSEMBLIES ARE SUPPLIED BOXED AND LABELLED.

- NOTES.**
- ASSEMBLY IS TO BE PERMANENTLY MARKED WITH CODE IDENTITY NUMBER AND PART NUMBER IN THE POSITION SHOWN ON SHEET 1. (E.G. U5792 HEXA6-AC-00-03-19-103-SB)
 - ESTIMATED WEIGHT = APPROXIMATELY 52g

THIS DRAWING IS UNPUBLISHED. ALL RIGHTS RESERVED. © COPYRIGHT 20 BY

DIMENSIONS: MILLIMETERS	DWN: D. WRIGLEY 19/07/2018	MATERIAL: SEE PN BREAKDOWN	FINISH: SEE PN BREAKDOWN
	CHK: M. PAUL 19/07/2018	 TE Connectivity	
TOLERANCES UNLESS OTHERWISE SPECIFIED: GENERAL TOL LINEAR ±0.25MM ANGULAR ±1°	APVD: R. STYLES 00/00/0000	PART NUMBER: HEXA6-xx-00-03-19-103-SB	
	PRODUCT SPEC: USED ON ARINC 600 #3, CAVITY C	NAME: ARINC 600 SIZE 3 - C OUTLET ASSEMBLY	
	APPLICATION SPEC: -	SIZE: A4	CAGE CODE: U5792
	WEIGHT: SEE NOTE 2	RESTRICTED TO	CUSTOMER DRAWING
		SCALE: 1:1	SHEET: 3 OF 3
			REV: AB