



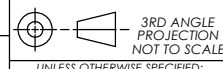
# CODE 54 - TINEL-LOCK BACKSHELL J MODIFICATION CHAIN ATTACHMENT

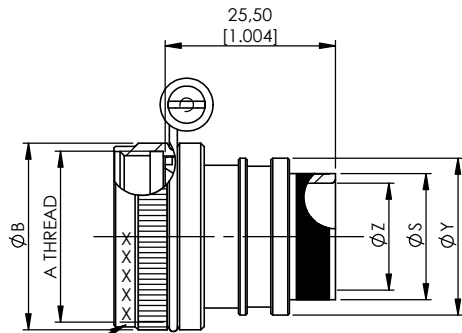
TXR54AB00-1608AJ

SERIES \_\_\_\_\_  
 TXR: RING INCLUDED  
 (SEE RING OPTION)  
 TX: RING NOT INCLUDED  
 CONNECTOR INTERFACE \_\_\_\_\_  
 MATERIAL \_\_\_\_\_  
 FINISH \_\_\_\_\_  
 ANGLE \_\_\_\_\_  
 DASH NUMBER (TABLE 1) \_\_\_\_\_  
 ENTRY SIZE (TABLE 2) \_\_\_\_\_  
 RING OPTION \_\_\_\_\_  
 AI - TO SUIT SINGLE BRAID  
 BI - TO SUIT DOUBLE BRAID  
 FOR TX, LEAVE BLANK  
 MODIFICATION CODE \_\_\_\_\_  
 J MODIFICATION CHAIN ATTACHMENT

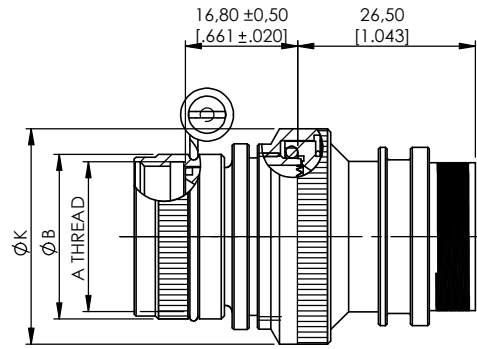
**NOTES:**

1. THIS PRODUCT IS DESIGNED TO TERMINATE A BRAIDED CABLE SHIELD AND A HEAT SHRINKABLE LIPPED BOOT TO A CONNECTOR.
2. THE INFORMATION CONTAINED ON THIS DRAWING SUPERSEDES THAT SHOWN IN SS-CH00-0250-008.
3. SEE DRAWING TR FOR DETAIL ON TINEL-LOCK RING, RINGS ARE DESIGNED TO BE HEATED ELECTRICALLY, ALL RINGS ARE MARKED WITH THERMOCHROMIC PAINT WHICH CHANGES COLOUR WHEN INSTALLATION TEMPERATURE IS REACHED.
4. BACKSHELL TO BE PERMANENTLY MARKED/BAGGED AND LABELLED WITH CODE IDENTIFICATION NUMBER AND PART NUMBER LESS RING DESIGNATOR. (e.g. 06090-TXR54AB00-1206J). RING SHALL BEAR NO MARKING.
5. FOR LARGER ENTRY SIZES, A 2 PIECE BACKSHELL ASSEMBLY (TYPE 2) IS SUPPLIED.
6. BACKSHELL MATES TO MIL-C-5015G, MS3400 SERIES CLASS D, E, K, L, U & W: MS3400, MS3401, MS3404, MS3406, MS3424, MS3446, MS3464, MS3467, MS3468, MS3450, MS3451, MS3454, MS3456, MS3470, MS3471, MS3472, MS3474, MS3475, MS3476. MIL-C-83723 SERIES II CLASS A & L, MIL-C-83723 SERIES I & II CLASS A, G, K, R & S: M83723/1, /2, /3, /4, /5, /6, /7, /8, /13, /14, /36, /37, /38, /39, /40, /41, /42, /43, /48, /49, /65, /66, /67, /68, /69, /70, /71, /72, /73, /74, /75, /76, /77, /78, /82, /83, /84, /85, /86, /87, /91, /92, /95, /97, /98 (MS3155 CONTROLLED INTERFACE).

<b>DRAWN</b> D. WRIGLEY 05/02/2019		<b>DATE</b> 05/02/2019		<b>BS 8888</b>		<b>PART NUMBER</b> TXR54, J MODIFICATION SERIES		 <b>Polamco</b>  <b>STE</b> <small>connectivity</small>
<b>APPROVED BY</b> M. PAUL 22/02/2019		<b>CHECKED BY</b> R. STYLES 27/02/2019		 <small>UNLESS OTHERWISE SPECIFIED: ALL DIMENSIONS IN MILLIMETRES INCHES IN PARENTHESES GENERAL TOLERANCES LINEAR ± 0.25mm ANGULAR ± 1°</small>		<b>TITLE</b> TINEL-LOCK BACKSHELL, J MODIFICATION		
<b>DOC TYPE</b> Customer Drawing		<b>MATERIAL</b> SEE PART NUMBER BREAKDOWN		<b>HEAT TREATMENT &amp; FINISH</b> SEE PART NUMBER BREAKDOWN		<b>ASSY USED ON:</b> SEE NOTE 6		
<b>ISSUE/REV</b> AB		<b>CHANGE NOTICE</b> DCR ....		<b>NCAGE CODE U5792</b>		<b>RESTRICTED TO:</b> WESTON LOCK, LOWER BRISTOL RD, BATH, BA2 1EP TEL. +44 (0)1225 322500		<b>DRAWING NO:</b> P43620
<b>WEIGHT/g</b> -						<b>SHT.</b> 1 OF 3		

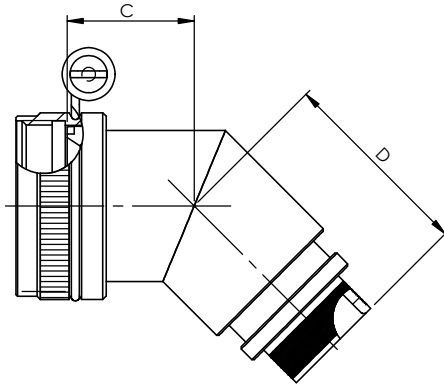


STRAIGHT BACKSHELL - TYPE 1

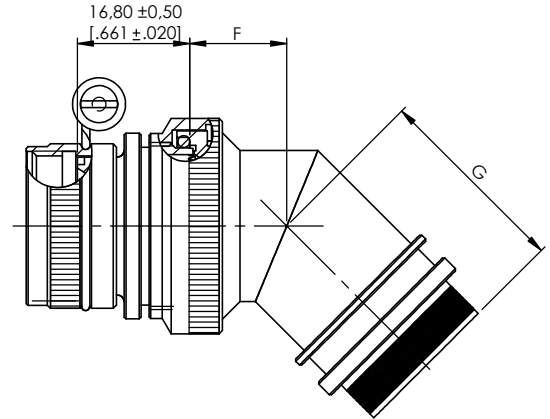


STRAIGHT BACKSHELL - TYPE 2

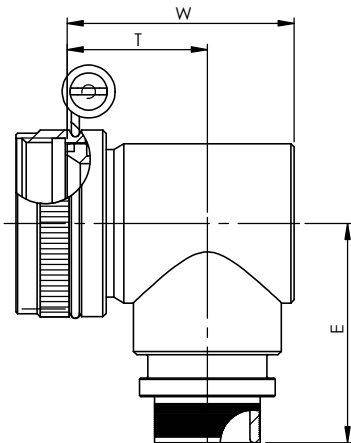
PART MARK  
HERE



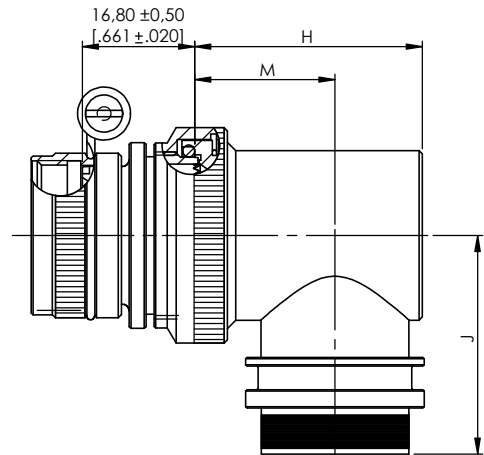
45° BACKSHELL - TYPE 1



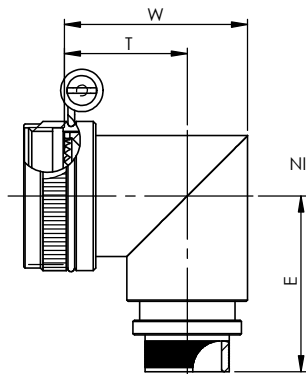
45° BACKSHELL - TYPE 2



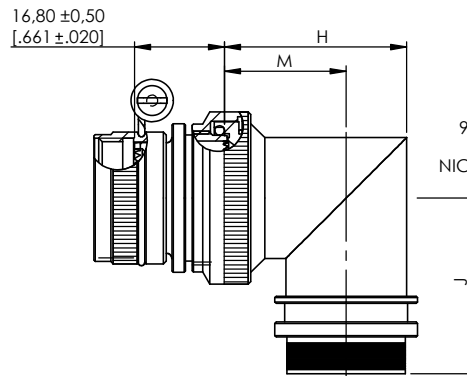
90° BACKSHELL - TYPE 1



90° BACKSHELL - TYPE 2



90° BACKSHELL - TYPE 1  
STAINLESS STEEL AND  
NICKEL ALUMINIUM BRONZE



90° BACKSHELL - TYPE 2  
STAINLESS STEEL AND  
NICKEL ALUMINIUM BRONZE

<b>DRAWN</b>		<b>DATE</b>
D. WRIGLEY		05/02/2019
<b>APPROVED BY</b>		
M. PAUL		22/02/2019
<b>CHECKED BY</b>		
R. STYLES		27/02/2019
<b>DOC TYPE</b>	Customer Drawing	
<b>ISSUE/REV</b>	<b>CHANGE NOTICE</b>	
AB	DCR ....	
<b>NCAGE CODE U5792</b>	<b>WEIGHT/g</b>	-

BS 8888
3RD ANGLE PROJECTION NOT TO SCALE
UNLESS OTHERWISE SPECIFIED: ALL DIMENSIONS IN MILLIMETRES INCHES IN PARENTHESES GENERAL TOLERANCES LINEAR ± 0.25mm ANGULAR ± 1°
<b>MATERIAL</b>
SEE PART NUMBER BREAKDOWN
<b>HEAT TREATMENT &amp; FINISH</b>
SEE PART NUMBER BREAKDOWN

<b>PART NUMBER</b>	TXR54, J MODIFICATION SERIES
<b>TITLE</b>	TINEL-LOCK BACKSHELL, J MODIFICATION
<b>ASSY USED ON:</b>	SEE NOTE 6
<b>RESTRICTED TO:</b>	WESTON LOCK, LOWER BRISTOL RD, BATH, BA2 1EP TEL. +44 (0)1225 322500
<b>DRAWING NO:</b>	P43620
<b>SHT.</b>	2 OF 3

**Polanco**  
connectivity

TABLE 1

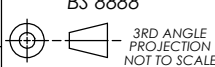

DIMENSIONS APPLY FOR  
STAINLESS STEEL AND NICKEL  
ALUMINIUM BRONZE BACKSHELLS

ORDER NO.	A THREAD	B MAX	MAX ENTRY	C +/-0,5 [+/-0.020]	D +/-0,5 [+/-0.020]	W +/-0,5 [+/-0.020]	T +/-0,5 [+/-0.020]	E +/-0,5 [+/-0.020]	W +/-0,5 [+/-0.020]	T +/-0,5 [+/-0.020]	E +/-0,5 [+/-0.020]
03	9/16-24 UNEF	17,0 [0.669]	04	16,8 [0.661]	27,0 [1.063]	26,4 [1.039]	17,8 [0.701]	25,9 [1.02]	26,3 [1.035]	16,0 [0.630]	25,9 [1.020]
08	1/2-20 UNF	15,6 [0.614]	04	16,6 [0.654]	26,8 [1.055]	24,5 [0.965]	17,5 [0.689]	26,2 [1.031]	22,4 [0.882]	17,5 [0.689]	26,2 [1.031]
10	5/8-24 UNEF	18,6 [0.732]	06	16,8 [0.661]	27,5 [1.083]	26,5 [1.043]	17,8 [0.701]	28,0 [1.102]	25,0 [0.984]	18,8 [0.740]	28,0 [1.102]
12	3/4-20 UNEF	21,7 [0.854]	08	17,3 [0.681]	28,0 [1.102]	29,0 [1.142]	18,7 [0.736]	29,5 [1.161]	28,3 [1.114]	20,4 [0.803]	29,5 [1.161]
14	7/8-20 UNEF	24,9 [0.980]	08	18,1 [0.713]	29,0 [1.142]	30,5 [1.201]	19,0 [0.748]	30,3 [1.193]	30,4 [1.197]	21,5 [0.846]	31,0 [1.220]
16	1-20 UNEF	28,2 [1.110]	10	19,0 [0.748]	29,7 [1.169]	34,0 [1.339]	21,0 [0.827]	32,7 [1.287]	33,5 [1.319]	23,0 [0.906]	32,7 [1.287]
18	1 1/16-18 UNEF	30,9 [1.217]	12	19,2 [0.756]	30,5 [1.201]	37,0 [1.457]	23,5 [0.925]	32,7 [1.287]	35,5 [1.398]	24,0 [0.945]	32,7 [1.287]
20	1 3/16-18 UNEF	34,1 [1.343]	14	20,1 [0.791]	30,9 [1.217]	42,0 [1.654]	27,0 [1.063]	34,3 [1.35]	38,8 [1.528]	25,7 [1.012]	34,3 [1.350]
22	1 5/16-18 UNEF	37,3 [1.469]	16	20,3 [0.799]	31,1 [1.224]	44,0 [1.732]	27,0 [1.063]	35,8 [1.409]	41,9 [1.650]	27,2 [1.071]	35,8 [1.409]
24	1 7/16-18 UNEF	40,4 [1.591]	18	21,8 [0.858]	32,1 [1.264]	45,0 [1.772]	27,0 [1.063]	37,4 [1.472]	44,8 [1.764]	28,7 [1.130]	37,4 [1.472]
28	1 3/4-18 UNS	50,0 [1.969]	22	23,3 [0.917]	32,5 [1.28]	54,2 [2.134]	31,4 [1.236]	41,9 [1.650]	50,7 [1.996]	31,6 [1.244]	41,9 [1.650]
32	2-18 UNS	56,3 [2.217]	24	25,0 [0.984]	29,3 [1.154]	60,9 [2.398]	36,4 [1.433]	45,3 [1.783]	60,0 [2.362]	33,5 [1.319]	45,3 [1.783]
36	2 1/4-16 UN	62,7 [2.469]	28	26,2 [1.031]	30,7 [1.209]	67,2 [2.646]	38,0 [1.496]	48,4 [1.906]	65,5 [2.579]	36,0 [1.417]	48,4 [1.906]
40	2 1/2-16 UN	69,0 [2.717]	28	28,6 [1.126]	32,0 [1.260]	73,2 [2.882]	41,0 [1.614]	51,4 [2.024]	72,0 [2.835]	39,3 [1.547]	51,4 [2.024]
44	2 3/4-16 UN	75,4 [2.969]	28	30,1 [1.185]	33,7 [1.327]	79,5 [3.13]	44,1 [1.736]	54,6 [2.15]	75,5 [2.972]	40,8 [1.606]	54,6 [2.15]
48	3-16 UN	81,7 [3.217]	28	31,3 [1.232]	34,9 [1.374]	85,8 [3.378]	47,2 [1.858]	57,7 [2.272]	75,5 [2.972]	40,8 [1.606]	57,7 [2.272]
61	1 1/2-18 UNEF	42,0 [1.654]	18	22,1 [0.870]	26,6 [1.047]	47,8 [1.882]	28,0 [1.102]	38,7 [1.524]	48,3 [1.902]	27,0 [1.063]	38,7 [1.524]

TABLE 2

DIMENSIONS APPLY FOR  
STAINLESS STEEL AND NICKEL  
ALUMINIUM BRONZE BACKSHELLS

ENTRY SIZE	Z MIN	S	Y +/-0,3 [+/-0.12]	K MAX	F +/-0,5 [+/-0.020]	G +/-0,5 [+/-0.020]	H +/-0,5 [+/-0.020]	M +/-0,5 [+/-0.020]	J +/-0,5 [+/-0.020]	H +/-0,5 [+/-0.020]	M +/-0,5 [+/-0.020]	J +/-0,5 [+/-0.020]
04	6,35 [.250]	9,49 +/-0,04 [.374 +/-0.002]	14,00 [.551]	NA	NA	NA	NA	NA	NA	NA	NA	NA
05	7,92 [.312]	11,06 +/-0,04 [.435 +/-0.002]	15,50 [.610]	21,0 [.827]	12,5 [.492]	27,5 [1.083]	24,0 [.945]	15,5 [.610]	27,95 [1.100]	24,3 [.957]	17,2 [.677]	28,2 [1.110]
06	9,53 [.375]	12,66 +/-0,04 [.498 +/-0.002]	17,10 [.673]	21,0 [.827]	12,5 [.492]	27,5 [1.083]	24,0 [.945]	15,5 [.610]	27,95 [1.100]	24,3 [.957]	17,2 [.677]	28,2 [1.110]
07	11,10 [.437]	14,21 +/-0,07 [.559 +/-0.003]	18,70 [.736]	21,0 [.827]	12,5 [.492]	27,5 [1.083]	24,0 [.945]	15,5 [.610]	27,95 [1.100]	24,3 [.957]	17,2 [.677]	28,2 [1.110]
08	12,70 [.500]	15,81 +/-0,07 [.622 +/-0.003]	20,30 [.799]	24,5 [.965]	13,1 [.516]	28,0 [1.102]	27,0 [1.063]	17,0 [.669]	29,45 [1.159]	28,3 [1.114]	19,4 [.764]	29,7 [1.169]
10	15,88 [.625]	18,96 +/-0,08 [.746 +/-0.003]	23,50 [.925]	29,0 [1.142]	13,5 [.531]	29,0 [1.142]	31,0 [1.220]	19,5 [.771]	31,00 [1.220]	31,1 [1.224]	21,0 [.827]	31,2 [1.228]
12	19,05 [.750]	22,14 +/-0,08 [.872 +/-0.003]	26,70 [1.051]	32,5 [1.280]	14,5 [.571]	29,7 [1.169]	34,0 [1.339]	21,0 [.827]	32,70 [1.287]	34,2 [1.346]	22,8 [.898]	32,9 [1.295]
14	22,23 [.875]	25,30 +/-0,08 [.996 +/-0.003]	29,80 [1.173]	35,5 [1.398]	15,5 [.610]	30,5 [1.201]	35,0 [1.378]	20,0 [.787]	34,25 [1.348]	38,5 [1.516]	25,3 [.996]	34,5 [1.358]
16	25,40 [1.000]	28,48 +/-0,08 [1.121 +/-0.003]	33,00 [1.299]	37,0 [1.457]	16,1 [.634]	30,9 [1.217]	38,0 [1.496]	21,5 [.846]	35,80 [1.409]	40,7 [1.602]	26,1 [1.028]	36,1 [1.421]
18	28,58 [1.125]	31,65 +/-0,08 [1.246 +/-0.003]	36,20 [1.425]	40,0 [1.575]	16,5 [.650]	31,1 [1.224]	42,0 [1.654]	24,0 [.945]	37,40 [1.472]	43,7 [1.720]	27,6 [1.087]	37,6 [1.480]
20	31,75 [1.250]	34,83 +/-0,08 [1.371 +/-0.003]	39,40 [1.551]	43,5 [1.713]	17,0 [.669]	32,1 [1.264]	45,0 [1.772]	25,5 [1.004]	38,90 [1.531]	46,4 [1.827]	29,1 [1.146]	39,1 [1.539]
22	34,93 [1.375]	37,98 +/-0,08 [1.495 +/-0.003]	42,50 [1.673]	48,5 [1.909]	18,5 [.728]	35,3 [1.390]	54,5 [2.146]	31,0 [1.220]	42,00 [1.654]	50,0 [1.969]	31,0 [1.220]	42,0 [1.654]
24	38,10 [1.500]	41,15 +/-0,08 [1.620 +/-0.003]	45,70 [1.799]	52,1 [2.051]	21,9 [.862]	38,1 [1.500]	58,0 [2.283]	33,0 [1.299]	46,00 [1.811]	53,5 [2.106]	33,0 [1.299]	46,0 [1.811]
28	44,45 [1.750]	47,50 +/-0,08 [1.870 +/-0.003]	52,00 [2.047]	58,5 [2.303]	26,9 [1.059]	44,4 [1.748]	65,5 [2.579]	36,5 [1.437]	51,1 [2.012]	60,3 [2.374]	36,5 [1.437]	51,1 [2.012]

<b>DRAWN</b> D. WRIGLEY 05/02/2019		 BS 8888 3RD ANGLE PROJECTION NOT TO SCALE UNLESS OTHERWISE SPECIFIED: ALL DIMENSIONS IN MILLIMETRES INCHES IN PARENTHESES GENERAL TOLERANCES LINEAR ± 0.25mm ANGULAR ± 1°	<b>PART NUMBER</b> TXR54, J MODIFICATION SERIES		 Polanco
<b>APPROVED BY</b> M. PAUL 22/02/2019			<b>TITLE</b> TINEL-LOCK BACKSHELL, J MODIFICATION		
<b>CHECKED BY</b> R. STYLES 27/02/2019			<b>ASSY USED ON:</b> SEE NOTE 6		
<b>DOC TYPE</b> Customer Drawing			<b>RESTRICTED TO:</b>		
<b>ISSUE/REV</b> AB		<b>CHANGE NOTICE</b> DCR ....		<b>DRAWING NO:</b> P43620	
<b>NCAGE CODE U5792</b>		<b>WEIGHT/g</b> -		<b>SHT.</b> 3 OF 3	
THIS INFORMATION IS CONFIDENTIAL AND PROPRIETARY TO TYCO ELECTRONICS CORPORATION AND ITS WORLDWIDE SUBSIDIARIES AND AFFILIATES (TE). IT MAY NOT BE DISCLOSED TO ANYONE OTHER THAN TE PERSONNEL WITHOUT AUTHORIZATION FROM TE (www.TE.com). WESTON LOCK, LOWER BRISTOL RD, BATH, BA2 1EP TEL. +44 (0)1225 322500					