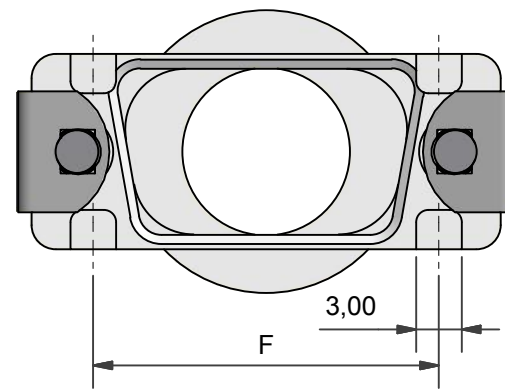
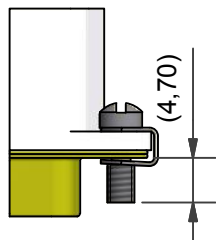


T OPTION
PROVIDES CUTOUTS IN ORDER TO
ACCOMMODATE TABS

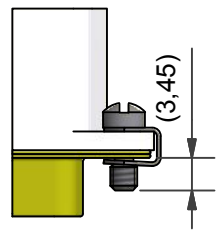


HARDWARE OPTIONS

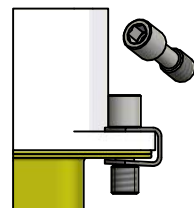
CODE: (NO CODE)
STANDARD
SLOTTED
HEAD SCREW



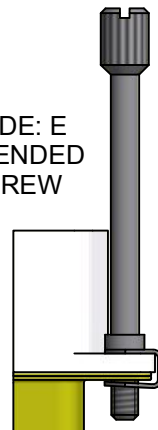
CODE: SSL
SHORT
SLOTTED
HEAD SCREW



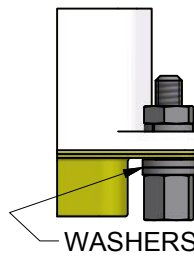
CODE: H
HEX SOCKET
HEAD SCREW



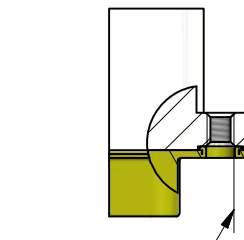
CODE: E
EXTENDED
SCREW



CODE: F
JACK POST
(4-40 UNC)

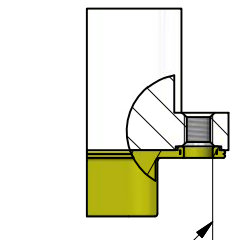


CODE: PF-0
THREADED
HOLE
4-40 UNC



NOT
SUPPLIED
WITH
HARDWARE

CODE: M3-0
THREADED
HOLE
M3



NOT
SUPPLIED
WITH
HARDWARE

DRAWN		DATE	
DIW		09/02/2018	
DESIGN APPROVAL		DATE	
K.SHEPPARD		09/04/2018	
DOC TYPE	Customer Drawing		
ISSUE	REV.	DCR	
5		6701	
NCAGE CODE U5792		WEIGHT N/A	

 3RD ANGLE PROJECTION NOT TO SCALE	UNLESS OTHERWISE SPECIFIED ALL DIMENSIONS IN MILLIMETRES GENERAL TOL LINEAR +/-0,25MM ANGULAR +/- 1°
	MATERIAL SEE PART NUMBER BREAKDOWN FINISH SEE PART NUMBER BREAKDOWN

PART NUMBER:	D**-1-60-**-* SERIES		
TITLE:	TINEL RING BACKSHELL		
ASSY USED ON:	MIL-DTL-24308		
THIS DRAWING IS COPYRIGHT AND THE PROPERTY OF POLAMCO LTD IT MUST NOT BE COPIED, USED FOR MANUFACTURE OR OTHERWISE DISCLOSED WITHOUT PRIOR WRITTEN CONSENT OF THE COMPANY.			
POLAMCO LTD, WESTON LOCK, LOWER BRISTOL ROAD BATH BA2 1EP		SHT	DRAWING NO:
		1	P8516



D09-1-60-07-1-B-T-A-H

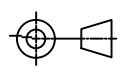
CONNECTOR TYPE _____
 SHELL SIZE (TABLE 1) _____
 ENTRY POSITION (1 - TOP ENTRY) _____
 TERMINATION STYLE _____
 ENTRY SIZE (SEE TABLE 2) _____
 MATERIAL (1-ALUMINIUM ALLOY) _____
 PLATING (SEE TABLE 3) _____
 T OPTION _____
 OMIT FOR STANDARD FLANGE
 RING OPTION _____
 A - RING TO SUIT SINGLE BRAID
 B - RING TO SUIT DOUBLE BRAID
 (OMIT IF NO RING REQUIRED)
 HARDWARE OPTION _____
 (OMIT FOR STANDARD)

SHELL SIZE	A	B	C	F
09	31,19	25,00	12,93	22,86
15	39,52	33,33	12,93	31,09
25	53,42	47,02	12,93	44,86
37	69,76	63,50	12,93	61,32
50	67,31	61,12	15,75	58,98
104	69,70	63,50	17,35	NA

ENTRY SIZE	G	D MAX	E MAX
04	6,35	9,53	14,3
05	7,92	11,10	15,8
06	9,53	12,70	17,4
07	11,10	14,30	19,0

CODE	FINISH
C	ELECTROLESS NICKEL
B	CADMIUM OLIVE DRAB OVER ELECTROLESS NICKEL
ZN	ZINC NICKEL BLACK PASSIVATE OVER ELECTROLESS NICKEL
CHP	ELECTROLESS NICKEL, HIGH PHOSPHOR
Y	YELLOW CHROMATE OVER CADMIUM
GOLD	GOLD OVER ELECTROLESS NICKEL

SEE SS0076 FOR FULL RANGE OF FINISH OPTIONS

DRAWN		DATE		 3RD ANGLE PROJECTION NOT TO SCALE	PART NUMBER:					
DIW		09/02/2018			D**-1-60-**-* SERIES					
DESIGN APPROVAL		DATE		UNLESS OTHERWISE SPECIFIED ALL DIMENSIONS IN MILLIMETRES GENERAL TOL LINEAR +/-0,25MM ANGULAR +/- 1°	TITLE:					
K.SHEPPARD		09/04/2018			TINEL RING BACKSHELL					
DOC TYPE	Customer Drawing				ASSY USED ON: MIL-DTL-24308					
ISSUE	REV.	DCR		MATERIAL SEE PART NUMBER BREAKDOWN FINISH SEE PART NUMBER BREAKDOWN	THIS DRAWING IS COPYRIGHT AND THE PROPERTY OF POLAMCO LTD IT MUST NOT BE COPIED, USED FOR MANUFACTURE OR OTHERWISE DISCLOSED WITHOUT PRIOR WRITTEN CONSENT OF THE COMPANY.			POLAMCO LTD, WESTON LOCK, LOWER BRISTOL ROAD BATH BA2 1EP	SHT	DRAWING NO:
5		6701			DISCLOSED WITHOUT PRIOR WRITTEN CONSENT OF THE COMPANY.			2	P8516	
NCAGE CODE U5792		WEIGHT N/A								

