

Parameter	Performance	
Model Number	PAV692780-30NF	
Peak Gain	8.0 dBi	
VSWR	< 2.0:1	
Polarization	VERTICAL	
Frequency	698-960 MHz	1710-2700 MHz
HPBW Azimuth	75°	63°
HPBW Elevation	64°	51°
F/B Ratio	10 dB	25 dB
Impedance	50Ω	
RF Connector/Cable	Type N, FEMALE, RG58 CABLE	
Radome	MATERIAL: WHITE ASA	
IP Rating	IP67	
Weight	1.35 Lbs / 0.62 Kg	

REVISIONS					
REV.	ECN#	ZONE	DESCRIPTION	CHANGED BY/DATE	APPROVED BY/DATE
F01	IAS-ECN-2428		RELEASED FOR PRODUCTION	MJM 19MAY14	SJ 19MAY14
F02	IAS-ECN-2578		UPDATED SPECS TO REV F02	MJM 12JUN14	SJ 13JUN14

D

D

C

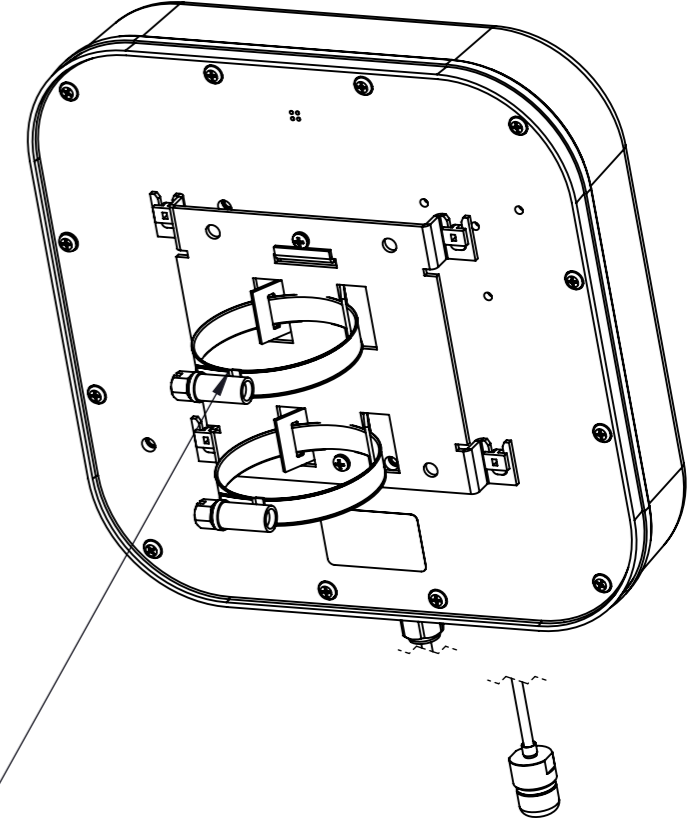
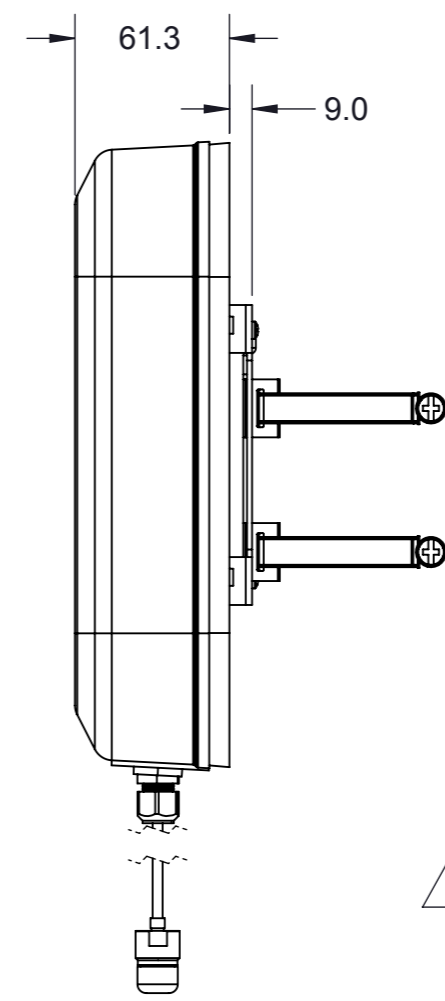
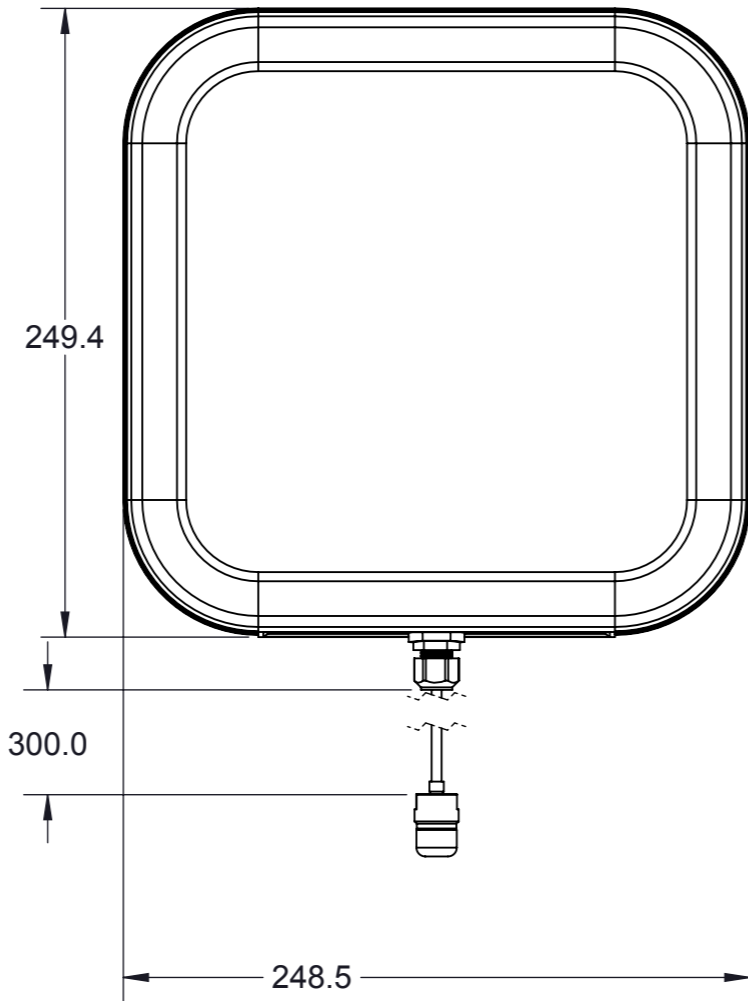
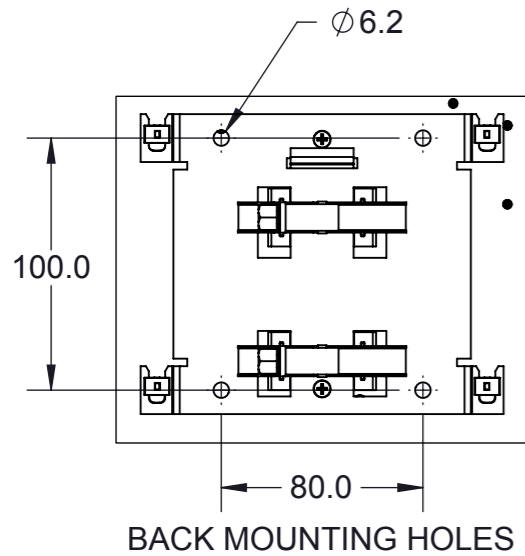
C

B

B

A

A



The component(s), including any plating, finishes, coatings, chemicals and surfaces treatments, supplied in this document/drawing must conform and comply with the latest issue of Laird Technologies Specification LT-GES-001, which fully includes but is not limited to all contents of EU Directives 2011/65/EC (RoHS Directive), as well as includes requirements of the Joint Industry Guide standard JIG-101, April 2005. The component(s) in this document/drawing may be subject to a full compound analysis for proof of compliance. The latest issue of Laird Technologies Specification LT-GES-001, (General Specification for the Environment) is readily available upon request from the supplier.

UNLESS OTHERWISE NOTED, THIS DOCUMENT CONTAINS LAIRD TECHNOLOGIES CONFIDENTIAL INFORMATION. REPRODUCTION, USE, DISCLOSURE OR TRANSMITTAL OF ALL OR ANY PART OF THIS DOCUMENT IS PROHIBITED EXCEPT TO THE EXTENT APPROVED IN WRITING BY AN AUTHORIZED REPRESENTATIVE OF LAIRD TECHNOLOGIES. LAIRD TECHNOLOGIES RESERVES ALL RIGHTS UNDER PATENTS, TRADEMARKS, COPYRIGHTS AND TRADE SECRETS. COPYRIGHT, LAIRD TECHNOLOGIES 2014. ALL RIGHTS RESERVED.

<b>MATERIAL:</b> AS NOTED		THIRD ANGLE PROJECTION 
<b>FINISH:</b> AS NOTED		
APPROVALS		DO NOT SCALE DRAWING
DRAWN BY	DATE	INTERPRET DIMENSIONING AND TOLERANCING IN ACCORDANCE WITH ASME Y14.5M-2009 <b>TOLERANCES UNLESS OTHERWISE SPECIFIED</b> DIMENSIONS ARE IN MILLIMETERS
ELEC. ENG.	19MAY14	
MECH. ENG.	19MAY14	
MFG./OPS.	19MAY14	
		ANGLE: 0 PLACE DECIMAL: ±30' 1 PLACE DECIMAL: ±0.5 2 PLACE DECIMAL: ±0.13 SURFACE ROUGHNESS 1.6/√

**Laird** MANCHESTER, NH 03103 USA

TITLE: **PAV692780 MOUNTING & OUTLINE DRAWING**

SIZE <b>A3</b>	DWG. NO. <b>PAV692780-30NFMO</b>	REV <b>F02</b>
SCALE: 1:5	PREVIOUS#	SHEET 1 OF 1

6

5

4

3

2

1