

High Voltage Vacuum Relay

Features

Physical:

- Hermetically Sealed: arc contained
- Maintenance free
- Small
- Tungsten contacts for power switching

Environmental:

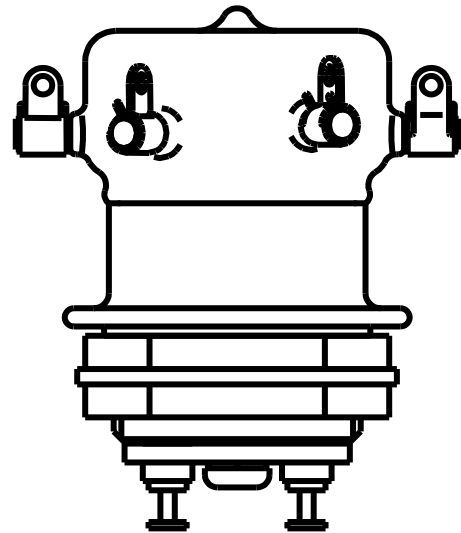
- Temperature range -55°C to 125°C
- 30G Shock

Ratings:

- 8 kVdc
- 2 kV @ 32 MHz
- 10 Adc carry

Coil Voltage:

- 12, 26.5, 115 Vdc Standard



P.O. Box 4422, Santa Barbara, CA 93140
 Phone (805) 684-4560 Fax (805) 684-9679
 E-Mail: info@ciitech.com
 Internet: <http://www.ciitech.com/>

TITLE

High Voltage Vacuum Relay

PREP. BY	JP	82-6-1
CHKD. BY	RG	87-10-7
ENG APRVL	LL	82-6-3

DWG NO.	H-18	
CAGE CODE		
SCALE	NA	SHEET
		1 of 5

General Specifications

Physical Data

	Units	H-18
Contact Arrangement		DPDT
Form		2C
Weight	oz	2.5

Environmental Data

Shock, 11ms ½ sine	g_{peak}	30
Vibration, 10 g_{peak}	Hz	55-500
Operating Temperature Range	°C	-55 to +125

Electrical Data

Test Voltage (dc or 60Hz)	kV_{peak}	10
Rated Operating Voltage		
dc or 60 Hz	kV_{peak}	8
2.5 MHz	kV_{peak}	5
16 MHz	kV_{peak}	3
32 MHz	kV_{peak}	2
Continuous Current Carry, Maximum		
dc or 60 Hz	A RMS	10
2.5 MHz	A RMS	7
16 MHz	A RMS	3
32 MHz	A RMS	2
Coil Hi-Pot	Vrms	500
Contact Capacitance		
Between Open Contacts	pF	0.8
Open Contacts to Ground	pF	1.5
Contact Resistance, maximum	Ohms	0.020
Mechanical Life	Cycles	1,000,000

Mechanical Data

Operate Time, Maximum	ms	15
Release Time, Maximum	ms	15

1. RATINGS ARE FOR 25 °C SEA LEVEL CONDITIONS.
2. RELAY BASE MUST BE GROUNDED



P.O. Box 4422, Santa Barbara, CA 93140
 Phone: (805) 684-4560 Fax: (805) 684-9679
 E-Mail: info@ciitech.com
 Internet: <http://www.ciitech.com>

H-18

THIRD ANGLE PROJECTION



THIS DRAWING
 PREPARED IN
 ACCORDANCE WITH
 ANSI/ASME Y14.5M-1982

CAGE CODE

18741

SCALE

NA

SHEET

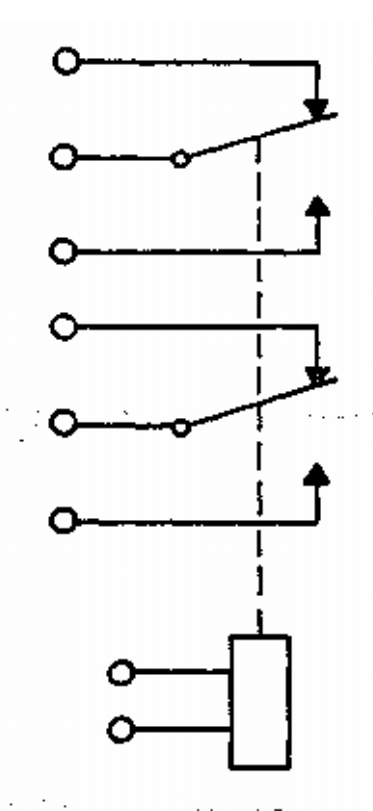
2 of 5

Coil & Electronics Data

REV.
E

	Units	H-18/12VDC	H-18	H-18/115VDC
Coil Voltage, nominal	Vdc	12	26.5	115
Pickup Voltage, maximum	Vdc	8	16	80
Drop-out Voltage	Vdc	.5-5	1-10	5-50
Coil Resistance ($\pm 10\%$)	Ohms	60	250	3500

Schematic



P.O. Box 4422, Santa Barbara, CA 93140
 Phone: (805) 684-4560 Fax: (805) 684-9679
 E-Mail: info@ciitech.com
 Internet: <http://www.ciitech.com>

H-18

THIRD ANGLE PROJECTION



THIS DRAWING
 PREPARED IN
 ACCORDANCE WITH
 ANSI/ASME Y14.5M-1982

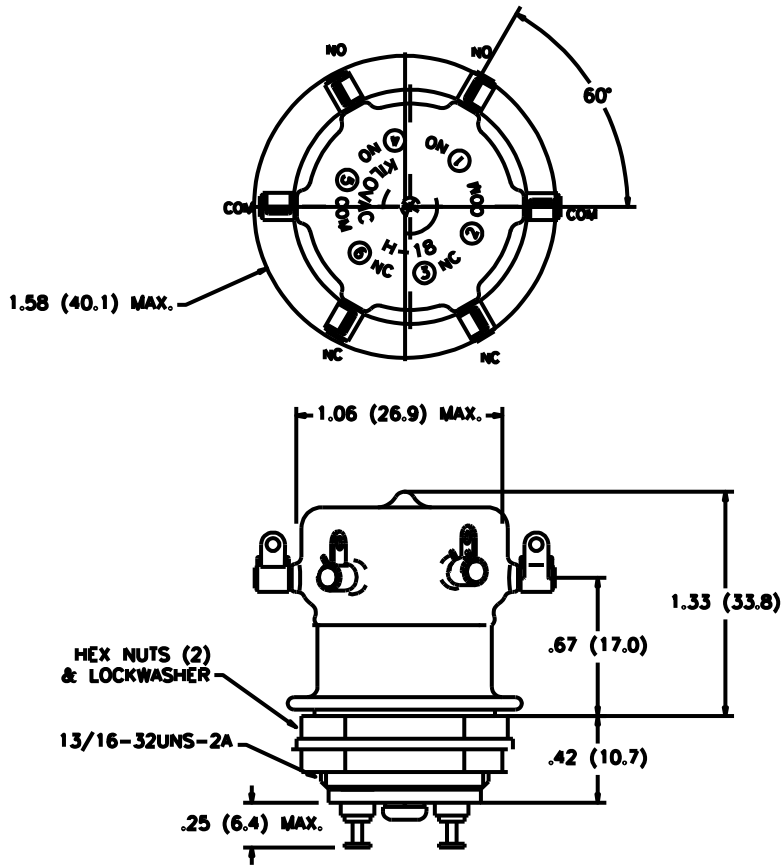
CAGE CODE
18741

SCALE
NA

SHEET
3 of 5

Part Drawing

REV.
E



Dimensions in Inches
 (Dimensions in Parentheses are in Millimeters)
 Tolerances Except as Noted
 .xx = ± .03
 .xxx = ± .010
 ∠ x° = ± 2°
 DO NOT SCALE DWG.



P.O. Box 4422, Santa Barbara, CA 93140
 Phone: (805) 684-4560 Fax: (805) 684-9679
 E-Mail: info@ciitech.com
 Internet: <http://www.ciitech.com>

H-18

THIRD ANGLE PROJECTION



THIS DRAWING
 PREPARED IN
 ACCORDANCE WITH
 ANSI/ASME Y14.5M-1982

CAGE CODE
 18741

SCALE
 NA

SHEET
 4 of 5

Revisions

REV.	DESCRIPTION	DATE	APP.
A	Initial Release ECO 6359	82/06/03	LL
B	Revised Pages 1, 2, and 4 ECO 7702	87/05/08	DKP
C	Revised Pages 1 and 2 ECO 7815	87/10/07	RG
D	New Template DCO 11856	99/09/07	RJG
E	Modify dimensions per attached red line. DCO15103	10/01/07	RS



P.O. Box 4422, Santa Barbara, CA 93140
 Phone: (805) 684-4560 Fax: (805) 684-9679
 E-Mail: info@ciitech.com
 Internet: <http://www.ciitech.com>

H-18

THIRD ANGLE PROJECTION



THIS DRAWING
 PREPARED IN
 ACCORDANCE WITH
 ANSI/ASME Y14.5M-1982

CAGE CODE

18741

SCALE

NA

SHEET

5 of 5