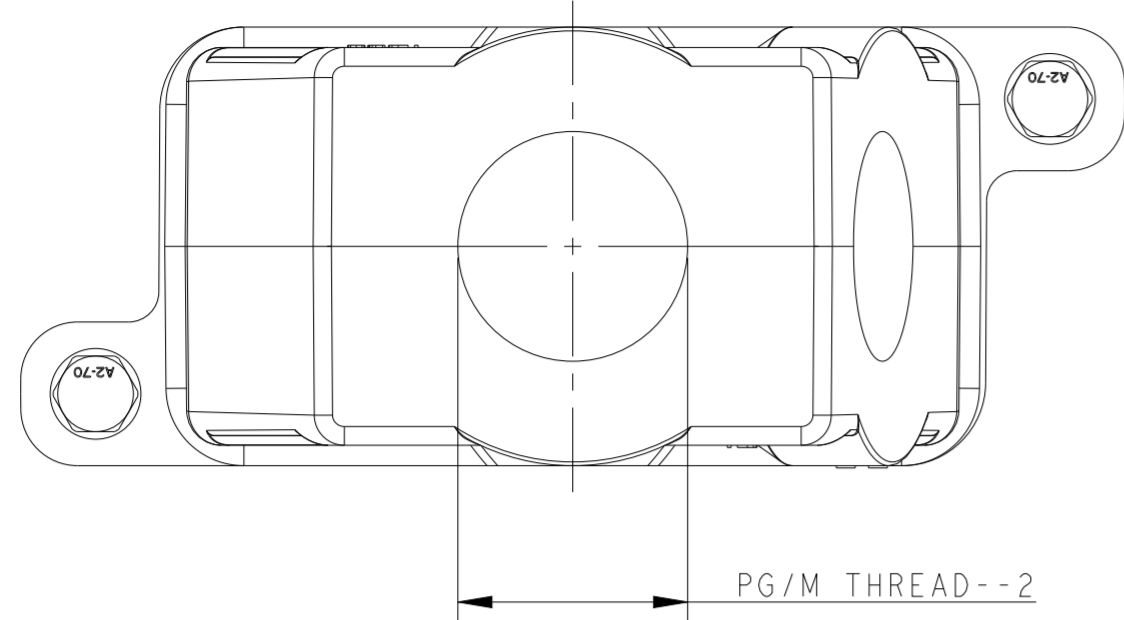


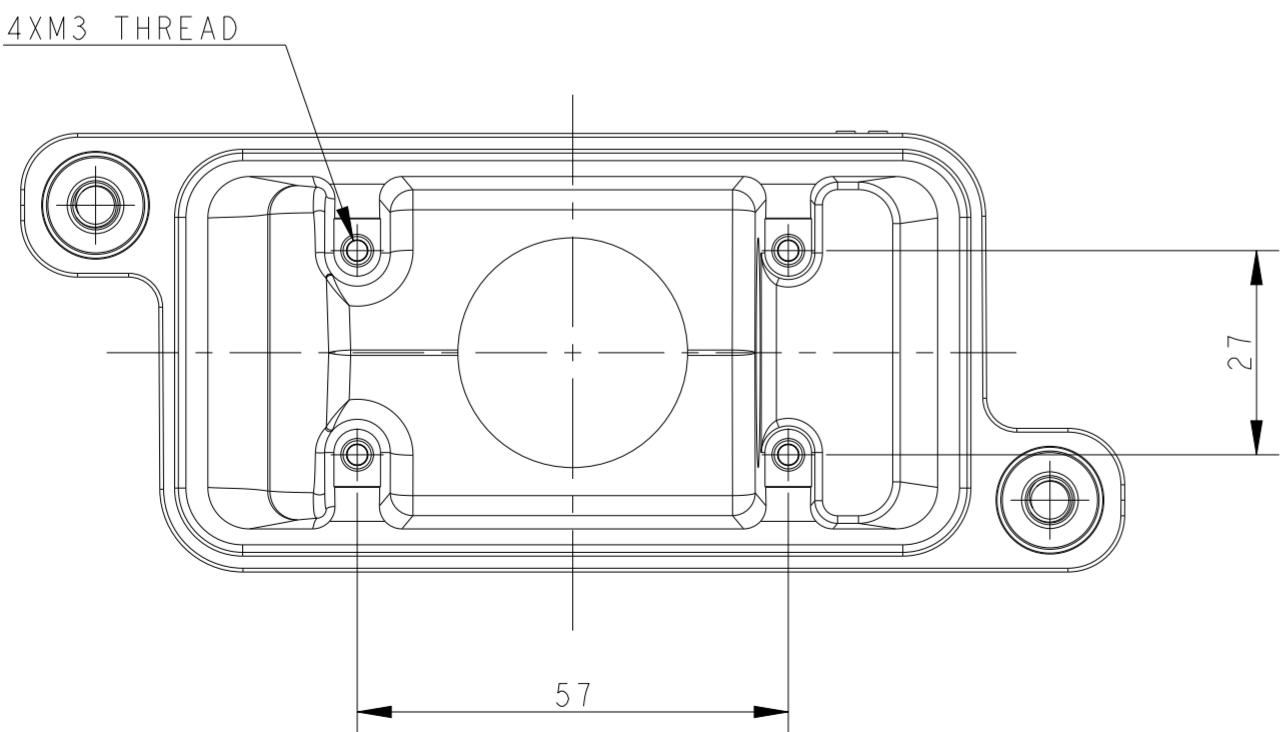
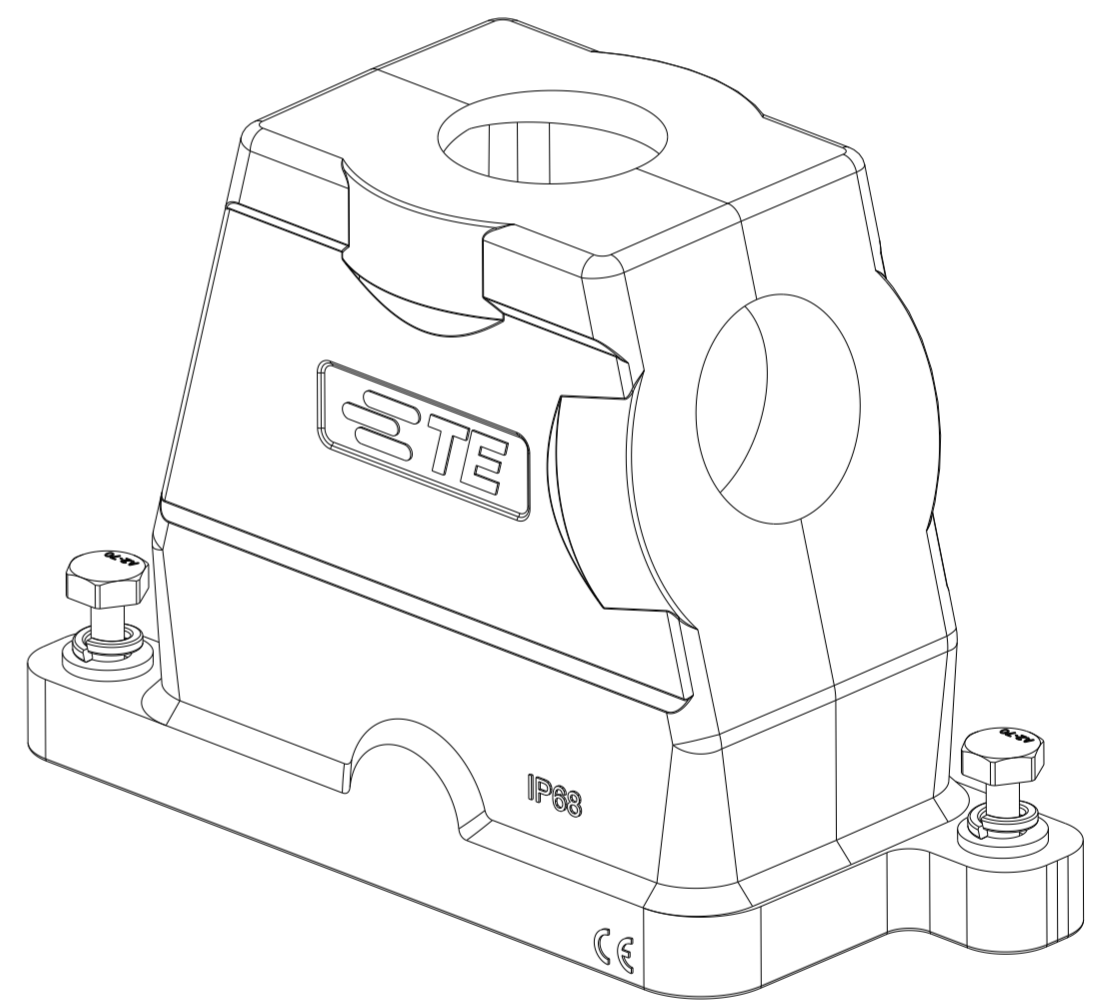
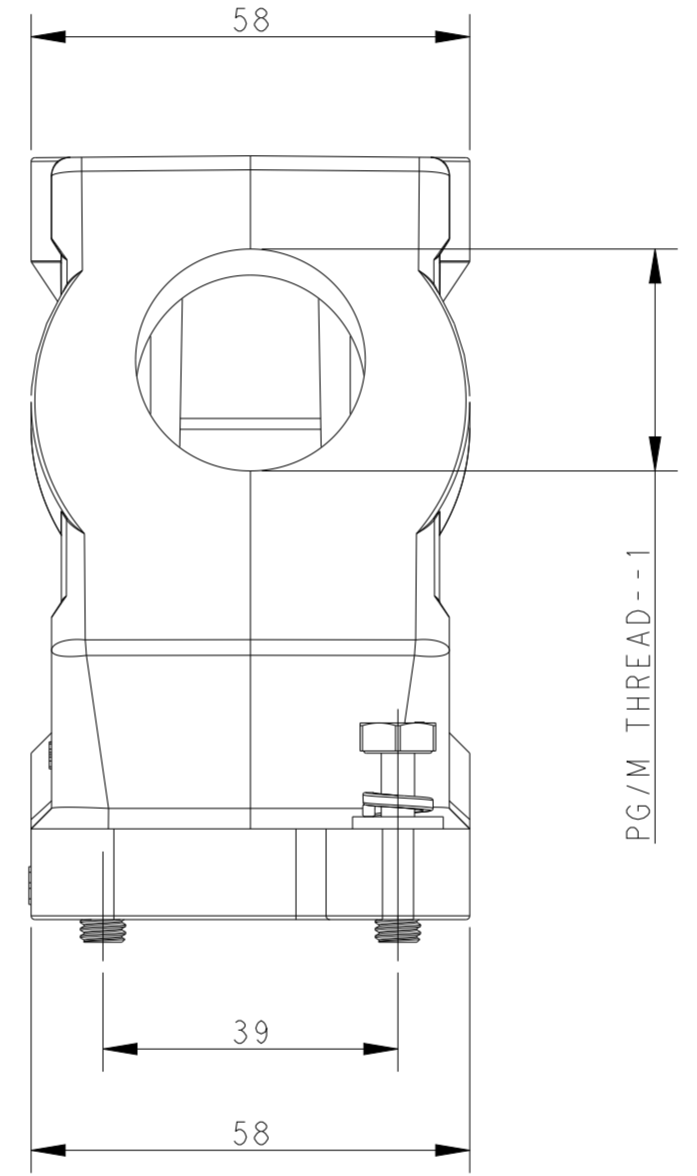
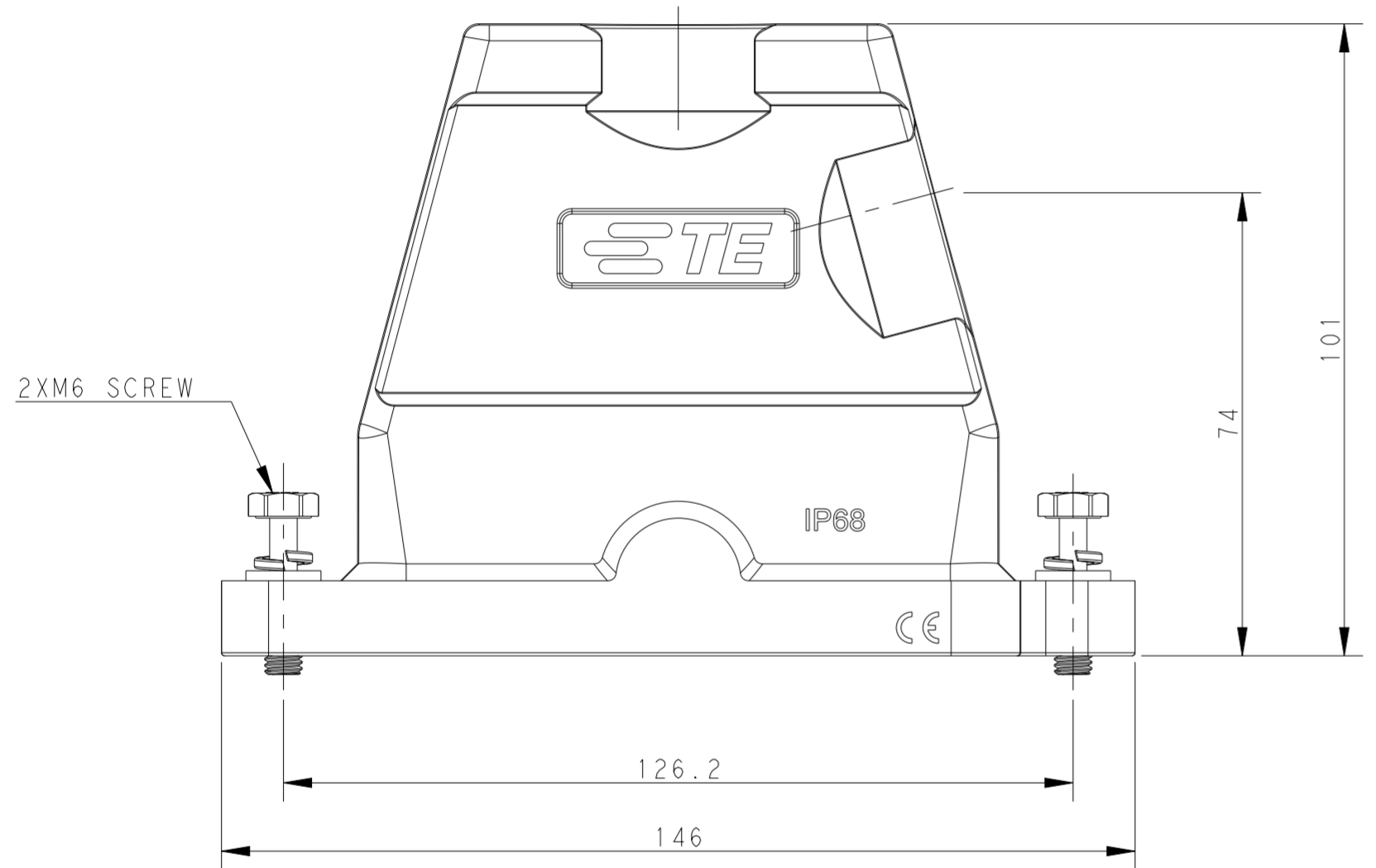
THIS DRAWING IS UNPUBLISHED. RELEASED FOR PUBLICATION 20  
 © COPYRIGHT 20 BY - ALL RIGHTS RESERVED.

REVISIONS				
P	LTR	DESCRIPTION	DATE	APVD
A		INITIAL RELEASE	08JUN2015	GY CW
B		ECR-20-012069	08MAY2021	BS CW



NOTES:  
 1. TECHNICAL CHARACTERISTICS:  
 HOOD MATERIAL: DIE CAST ALUMINIUM ALLOY  
 SURFACE TREATMENT: SEE TABLE  
 DEGREE OF PROTECTION: IP68 (MATED)

注释  
 1. 技术参数:  
 壳体材料: 铝合金  
 表面处理: 见表格  
 防护等级: IP68 (配合)



T1900102232-000	POWDER COATED GRAY	H10BPR-TS/GH-2M32	M32	M32
T1900100232-000	POWDER COATED BLACK	H10BPR-TS/GH-2M32	M32	M32
PART NUMBER	SURFACE TREATMEN	DESCRIPTION	PG/M THREAD-2	PG/M THREAD-1

THIS DRAWING IS A CONTROLLED DOCUMENT.		DWN Gino Yao 08JUN2015	<b>STE</b> TE Connectivity	
		CHK Chris Wang 08JUN2015		
		APVD Xiang Xu 08JUN2015	NAME H10BPR-TS/GH-PG/M	
DIMENSIONS: mm		PRODUCT SPEC 108-137014	SIZE A2	
TOLERANCES UNLESS OTHERWISE SPECIFIED: 0 PLC ± 1 PLC ± 2 PLC ± 3 PLC ± 4 PLC ± ANGLES ±		APPLICATION SPEC 114-137014	DRAWING NO C-T190010XXXXX00	
MATERIAL -		WEIGHT -	RESTRICTED TO -	
		Customer Drawing		SCALE 1:1 SHEET 1 OF 1 REV B