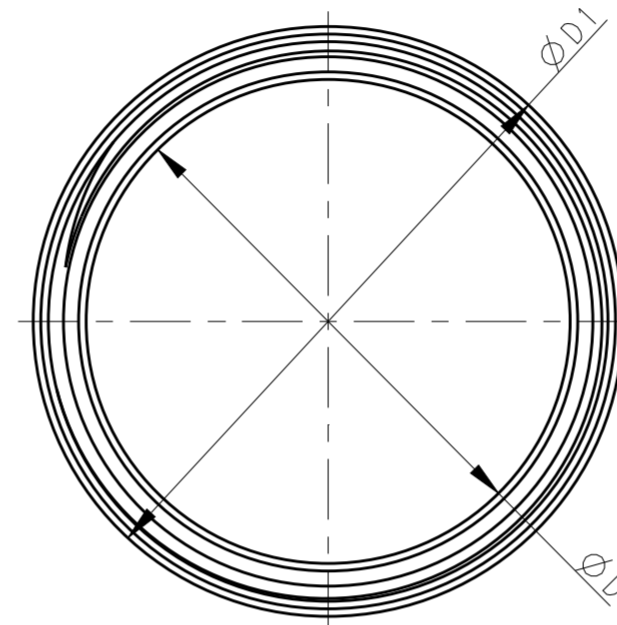
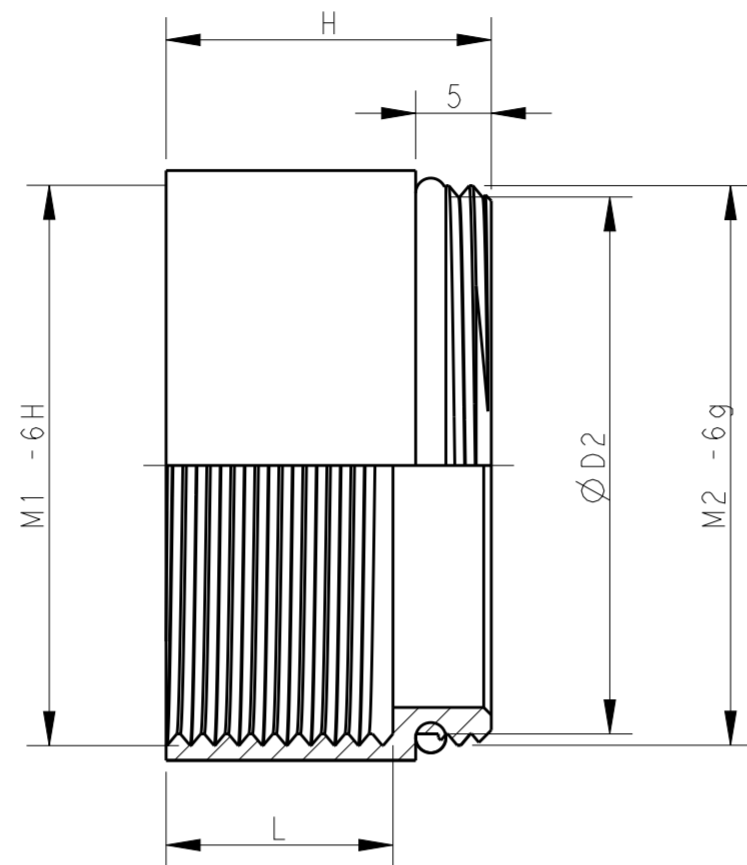
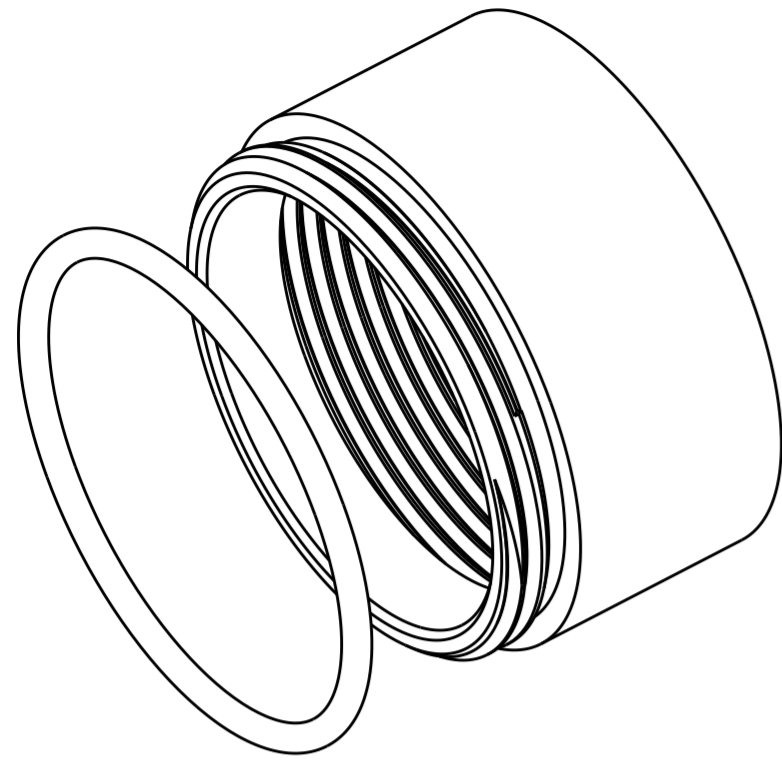


THIS DRAWING IS UNPUBLISHED. RELEASED FOR PUBLICATION 20
 © COPYRIGHT 20 BY - ALL RIGHTS RESERVED.

REVISIONS				
P	LTR	DESCRIPTION	DATE	APVD
	A	INITIAL	22FEB2016	DW CW
	A1	ECR-19-004297	22MAR2019	SR CW



NOTES:

1. TECHNICAL CHARACTERISTICS:
 SHELL MATERIAL / 主体材料 : BRASS, NICKEL PLATED / 铜镍镀
 O RING / O 型圈 : NBR
 OPERATION TEMPERATURE / 工作温度: -40°C +100°C

M40 x 1.5	34	43	38.2	21.5	15	M40 x 1.5	STUD-M40 金属轴套-圆形M40-M40	T3333404011-000
M32 x 1.5	27	34.5	30.2	21.5	15	M32 x 1.5	STUD-M32 金属轴套-圆形M32-M32	T3333323211-000
M25 x 1.5	20.5	27.2	23.2	20	13.5	M25 x 1.5	STUD-M25 金属轴套-圆形M25-M25	T3333252511-000
M20 x 1.5	15.5	22	18.2	18	11.5	M20 x 1.5	STUD-M20 金属轴套-圆形M20-M20	T3333202011-000
PG29	32	39	35.5	21.5	15	PG29	STUD-PG29 金属轴套-圆形PG29-PG29	T3333292912-000
PG21	24	30	26.5	20	13.5	PG21	STUD-PG21 金属轴套-圆形PG21-PG21	T3333212112-000
PG16	18	24.5	21	18	11.5	PG16	STUD-PG16 金属轴套-圆形PG16-PG16	T3333161612-000
PG13.5	16	22.4	18.9	18	11.5	PG13.5	STUD-PG13.5 金属轴套-圆形PG13.5-PG13.5	T3333131312-000
M1-6H M1-6H 内螺纹	D	D1	D2	H	L	M2-6g M2-6g 外螺纹	PART DESCRIPTION 描述	PART NUMBER 料号

OBSOLETE

THIS DRAWING IS A CONTROLLED DOCUMENT.		DWN DAVID WANG 19FEB2016	TE Connectivity		
DIMENSIONS: mm		CHK CHRIS WANG 19FEB2016			NAME Circle Metal Thread Adapter
		APVD XIANG XU 19FEB2016			PRODUCT SPEC -
TOLERANCES UNLESS OTHERWISE SPECIFIED:		APPLICATION SPEC -		SIZE A2	
0 PLC ±		WEIGHT -		CAGE CODE C-T3333XXX1X000	
1 PLC ±		CUSTOMER DRAWING		DRAWING NO. T3333XXX1X000	
2 PLC ±		SCALE 2:1		SHEET 1 OF 1	
3 PLC ±		RESTRICTED TO		REV A1	
4 PLC ±					
ANGLES ±					
FINISH -					